



**i n v e n t**

## HP e3000 High Availability Solutions

# Agenda

- Intro
- Nov 14<sup>th</sup> Announcement
- HA Investment Strategies
- Your HA Goals
- Storage Components
- HA Components
- SAN Components
- Lets Build a Cluster with SAN

# Intro

*Z Z Z z z z z z z z z z z z z z z z z*

# Announcement

- HP stops selling the HP e3000  
Nov 2003
- HP will support the HP e3000  
through its 5 year support life  
(which ends Nov 2006)

# HA Investment Strategy

- Goal: Give the best, reasonable, chance to our HP e3000 users so that they migrate to another HP platform, when it and they are ready.
- Invest in HA solutions that solve real customer problems and that can be realistically supported.
- Invest in hardware (storage) that gives the best chance of being there through the support life of the HP e3000.

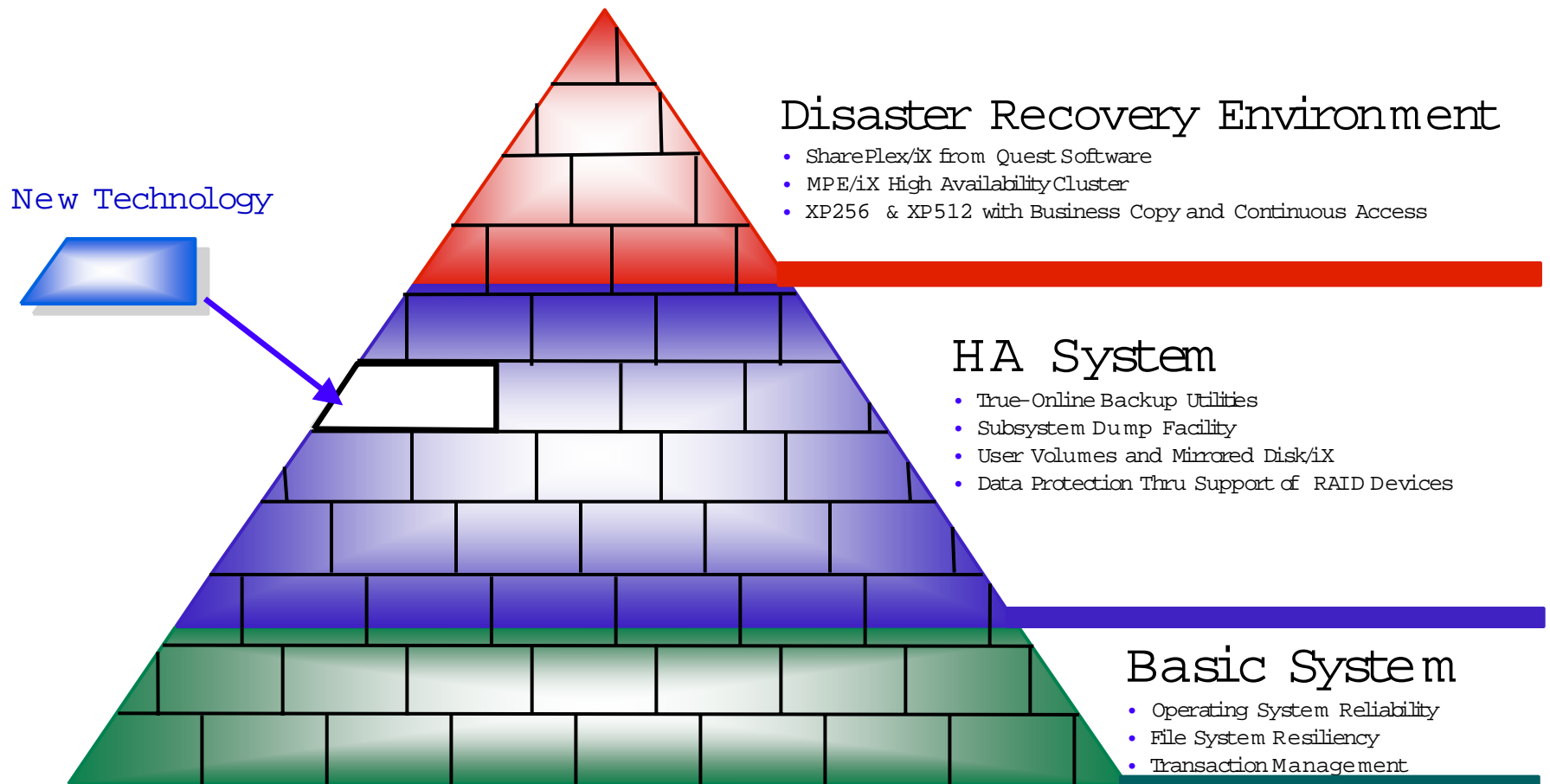
## Your HA Goals

- Remove points of failure
- Reduce complexity
- Increase or maintain availability
- Make sure outages are not catastrophic to the life of the business (or your career)
- Invest in real solutions that reduce unplanned downtime (not perceived problems)

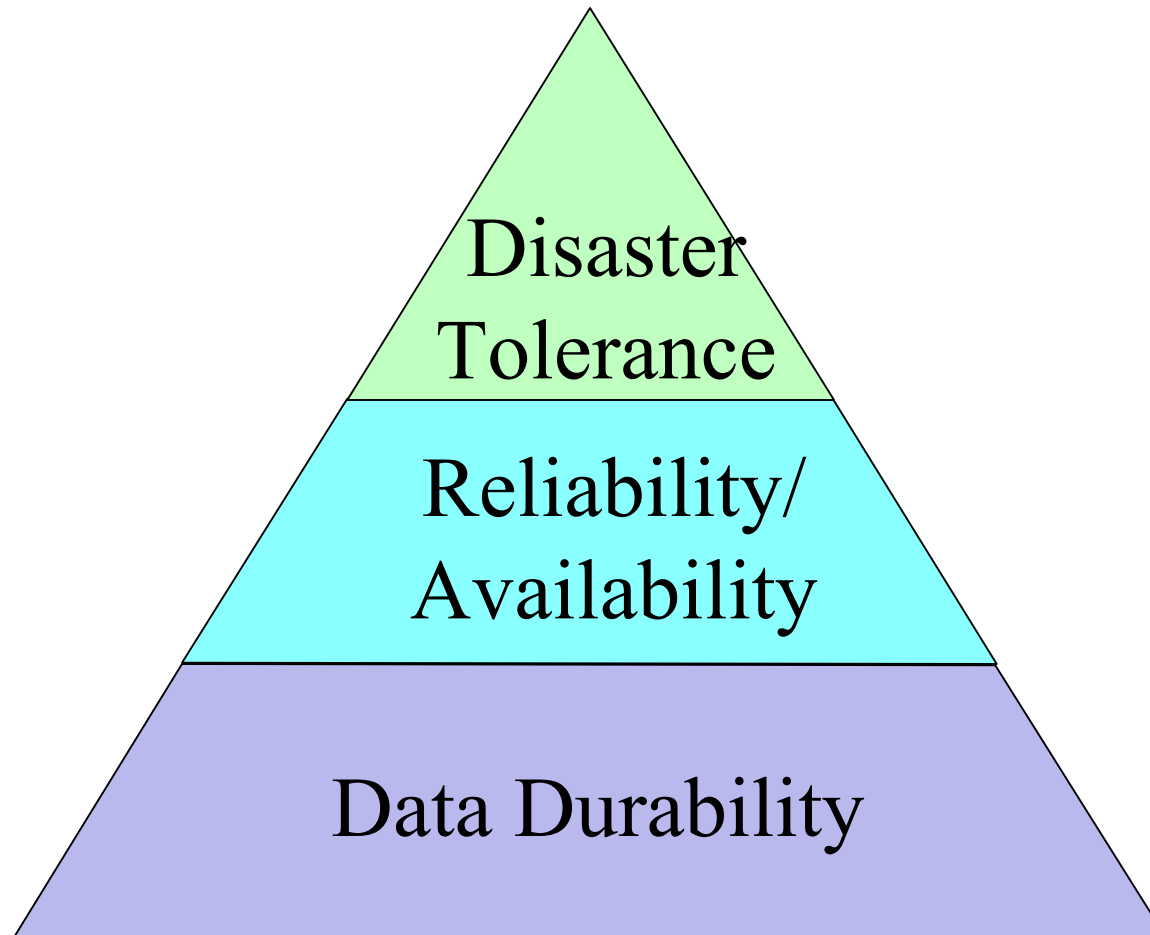


Garlic rope  
against Vampires

# High Availability Pyramid

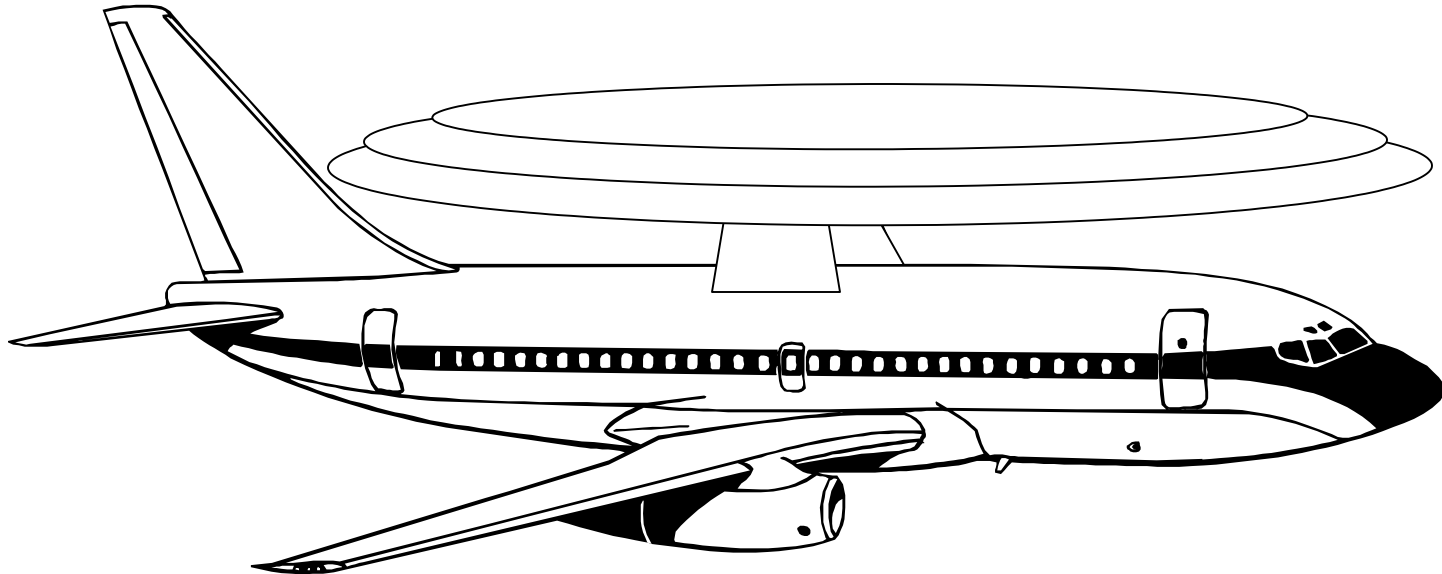


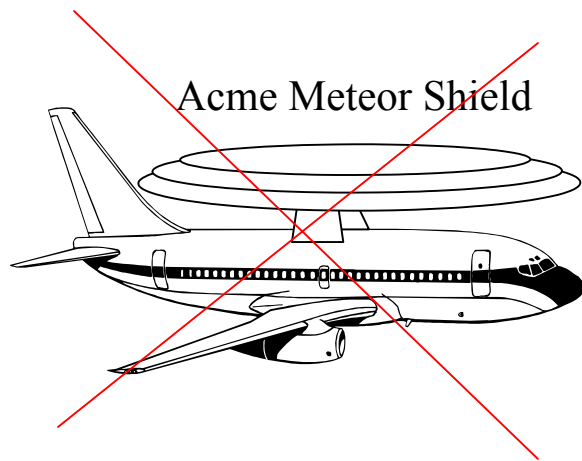
# Modified High Availability Pyramid





# Acme Meteor Shield





## Bad Choices

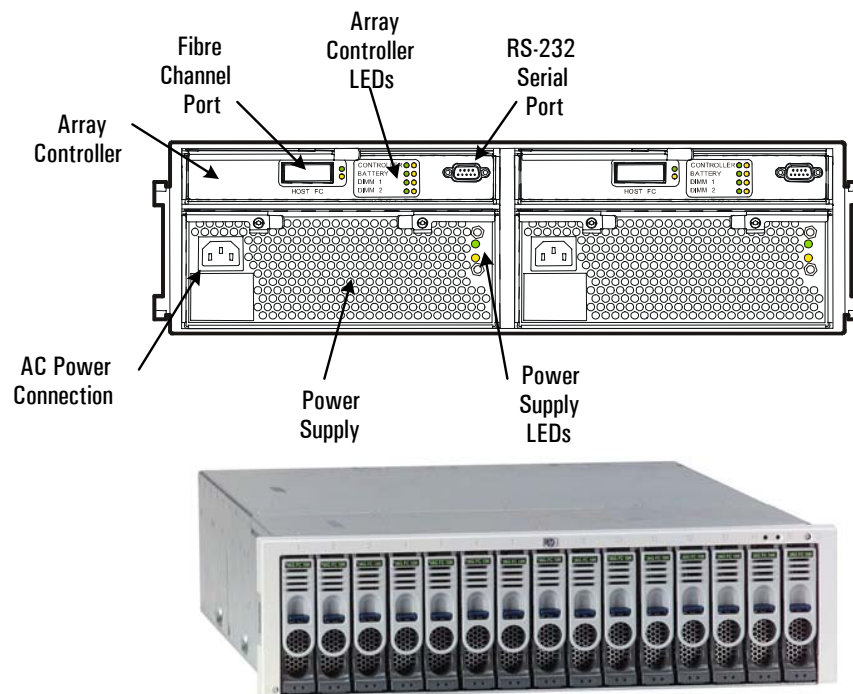
- Malicious compliance
- Perceived vs Real Risk
- Invalid outage data

## Selection Criteria

- Evaluate cost of solution vs risk of the event
- Impact to business if you do nothing
- Collect outage data
- Select solution that reduces the risk
- Select solution that reduces impact
- Training

## Storage Component

### SureStore Virtual Array 7100

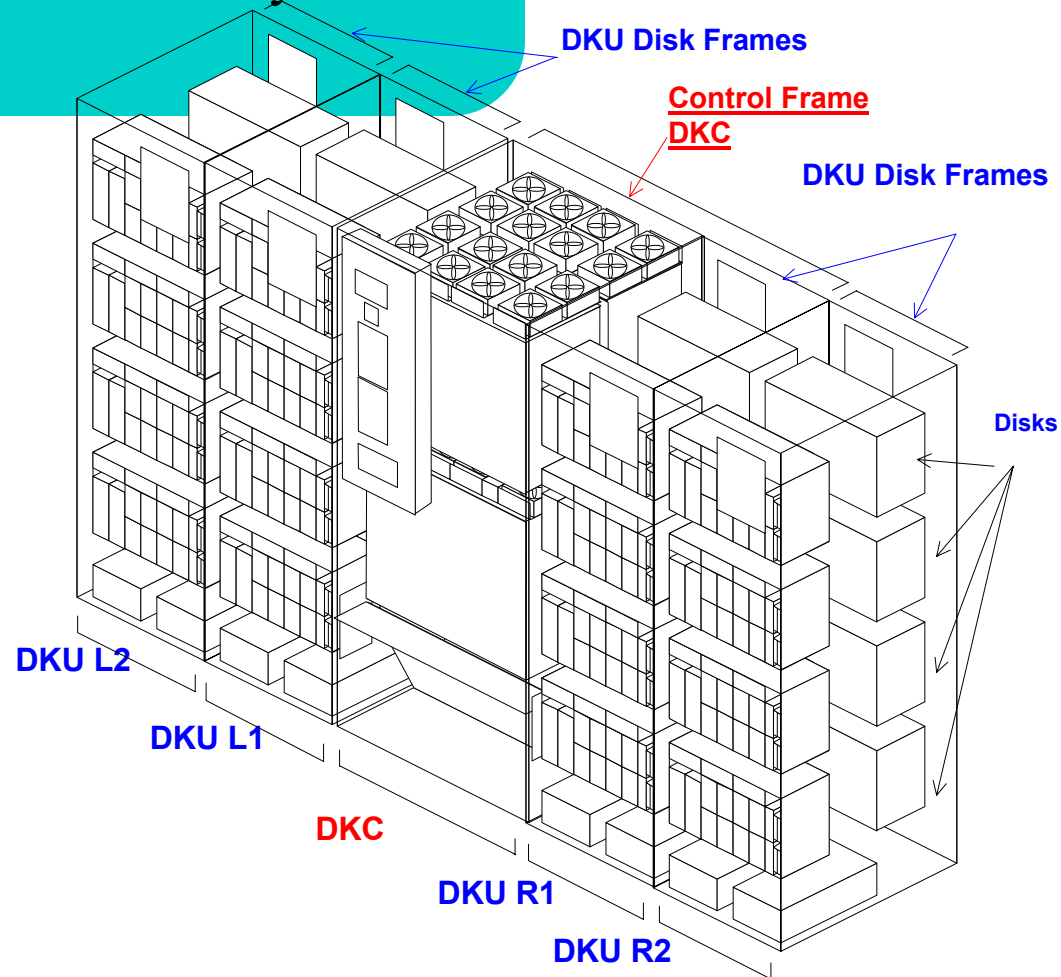


## VA7100

- Replacement for 12H AutoRAID
  - FC only
  - Has one redundancy group that can be configured in either RAID0-1 or AutoRAID (RAID0-5)
  - Capacity up to 1TB raw
- 
- Currently for 7.1 and beyond
  - SCSI connectivity requires A5814A-003 Fabric Router
  - Implementation requires PC running CV SDM

# Storage Components

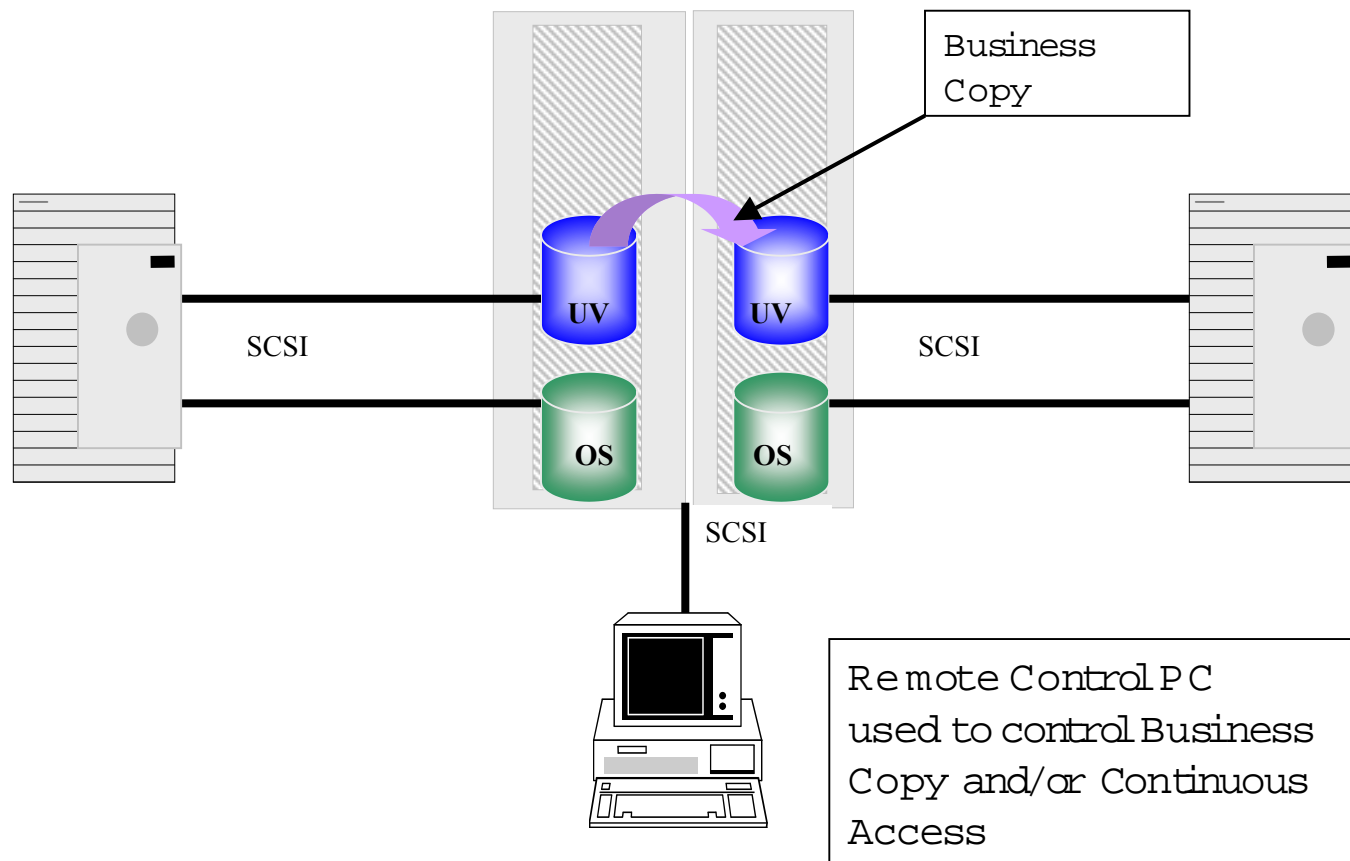
## SureStore Disk Array XP512



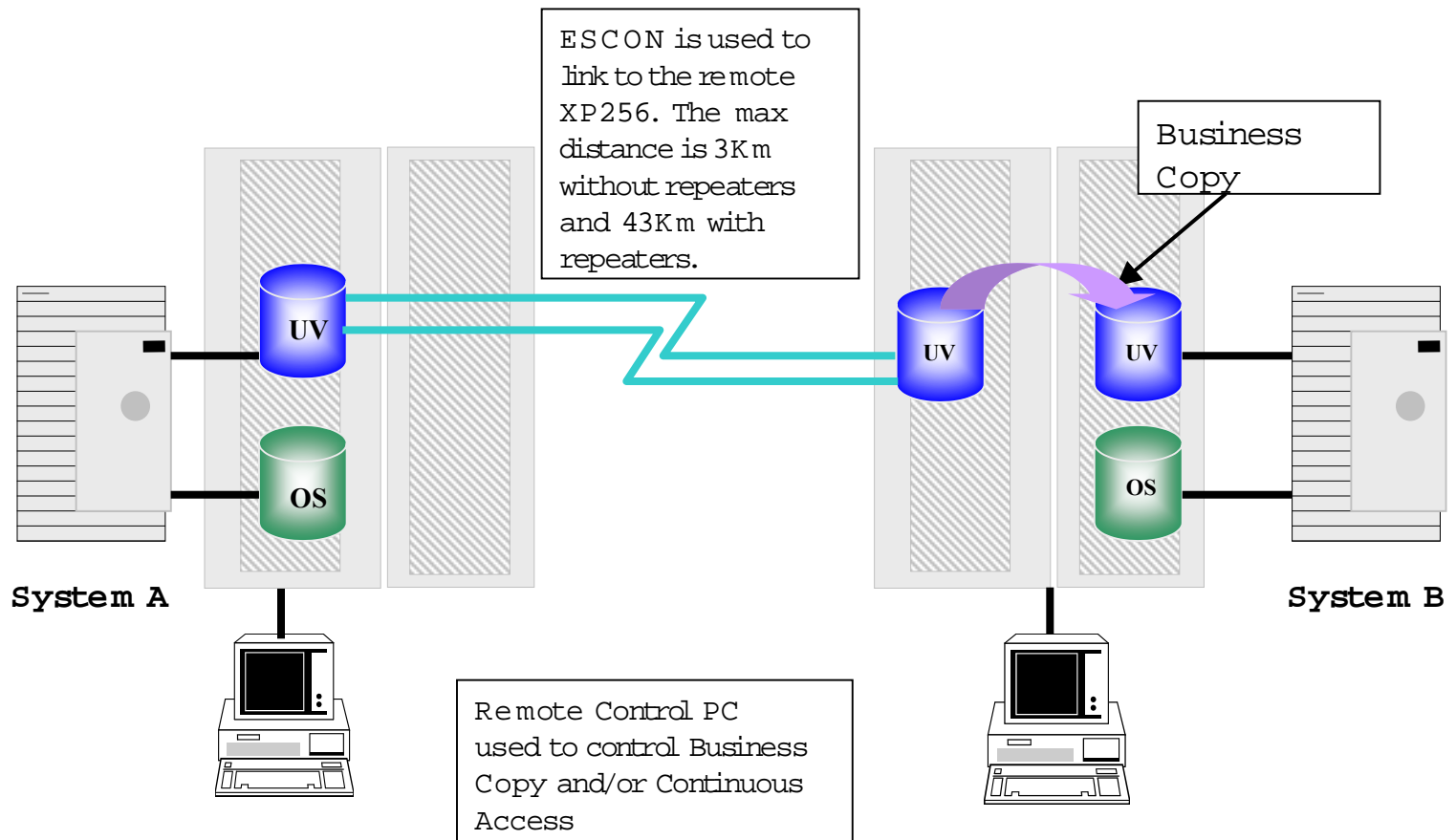
# XP512 Specs

- **Environmental**  
Small footprint and disk capacity at 93Terabytes
- **Heterogeneous Hardware Support**  
The cabinet can be shared among multiple machines running MPE/iX or HP-UX or any other operating system. (*Shared hardware not shared data*)
- **High Availability Features**  
Protection of data thru RAID algorithms  
Ability to hotswap components  
Support of Business Copy and Continuous Access  
Host based control thru XP RAID Mgr
- **Support**  
The XP cabinet is configured to “phone home” when errors are detected. HP will then contact the customer, fix the problem online or dispatch a CE.

# MPE/iX with Business Copy XP



# M P E/iX Continuous Access XP



## **HA Components Mirrored Disk/iX**

- Works on JBOD
- Inexpensive
- Low overhead

### **Downside**

- Not recommended with capacities over 50GB
- No protection for Ldev 1
- More complex than hardware protection



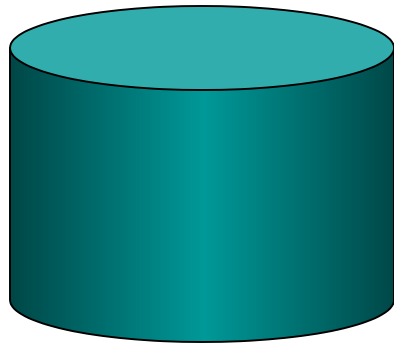
## Mirrored Disk/iX

### Memory Manager

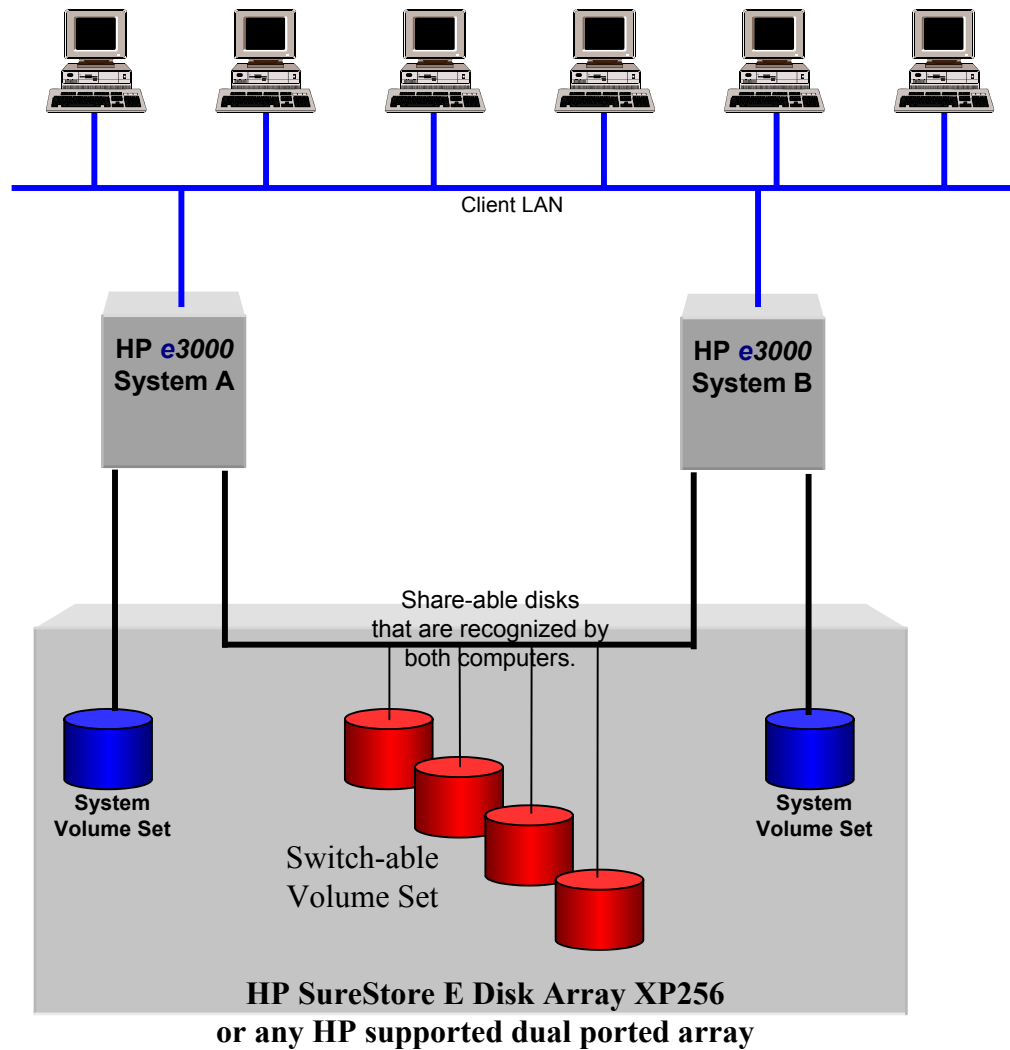
- Start two asynchronous write
- Wait for first return
- Start timer (~130 seconds)  
If second write fails disable mirroring  
Notify operator

### Toggle Select for Read

- Read disk
- Wait for this return of ~130 sec
- If read timeout disable mirroring



# Cluster/iX



## Cluster/iX Features

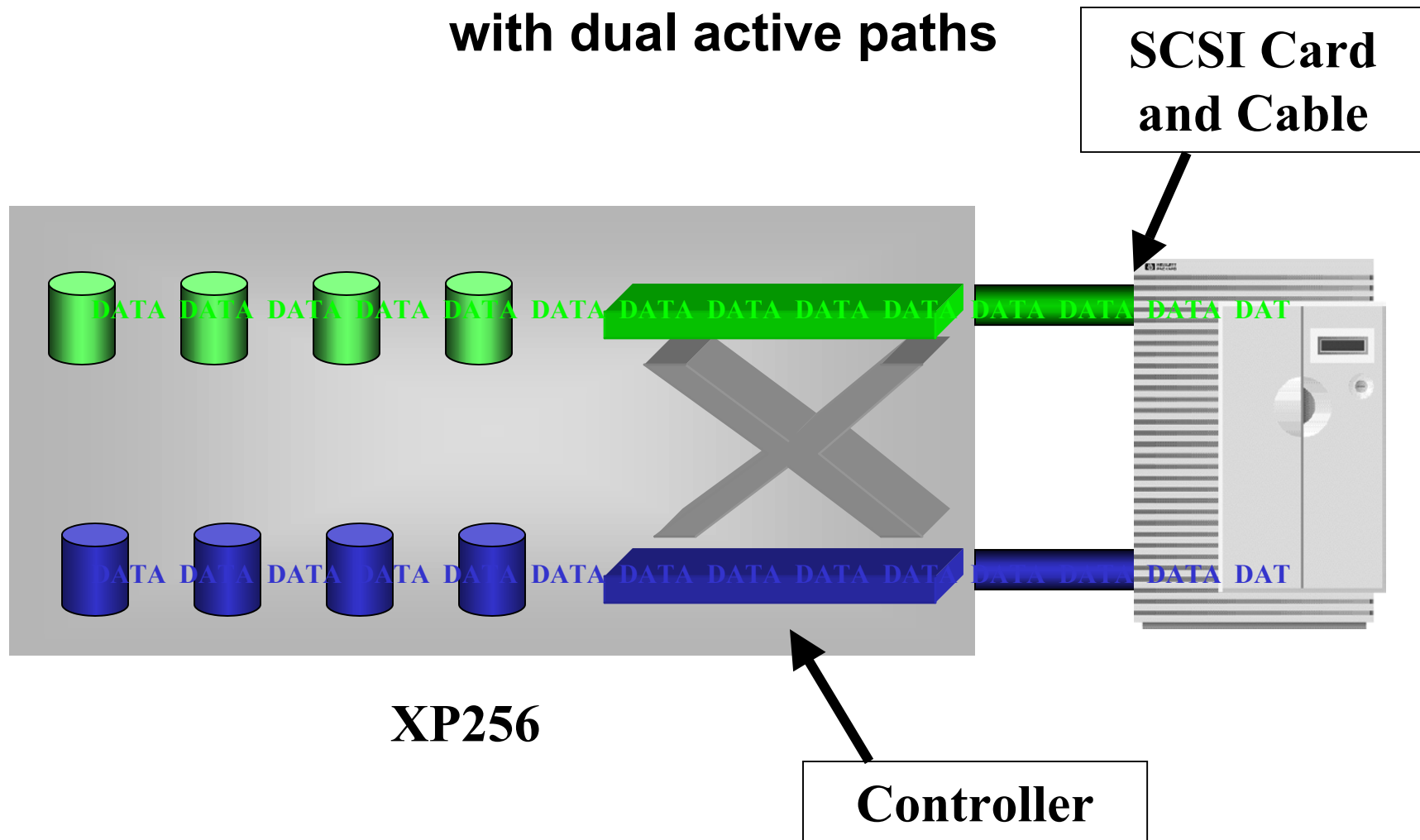
- Easy management
- Inexpensive cluster solution
- Totally customer customizable job scripts
- New heartbeat feature in 7.5 release
- Works with any HP supported dual ported array

## Downside

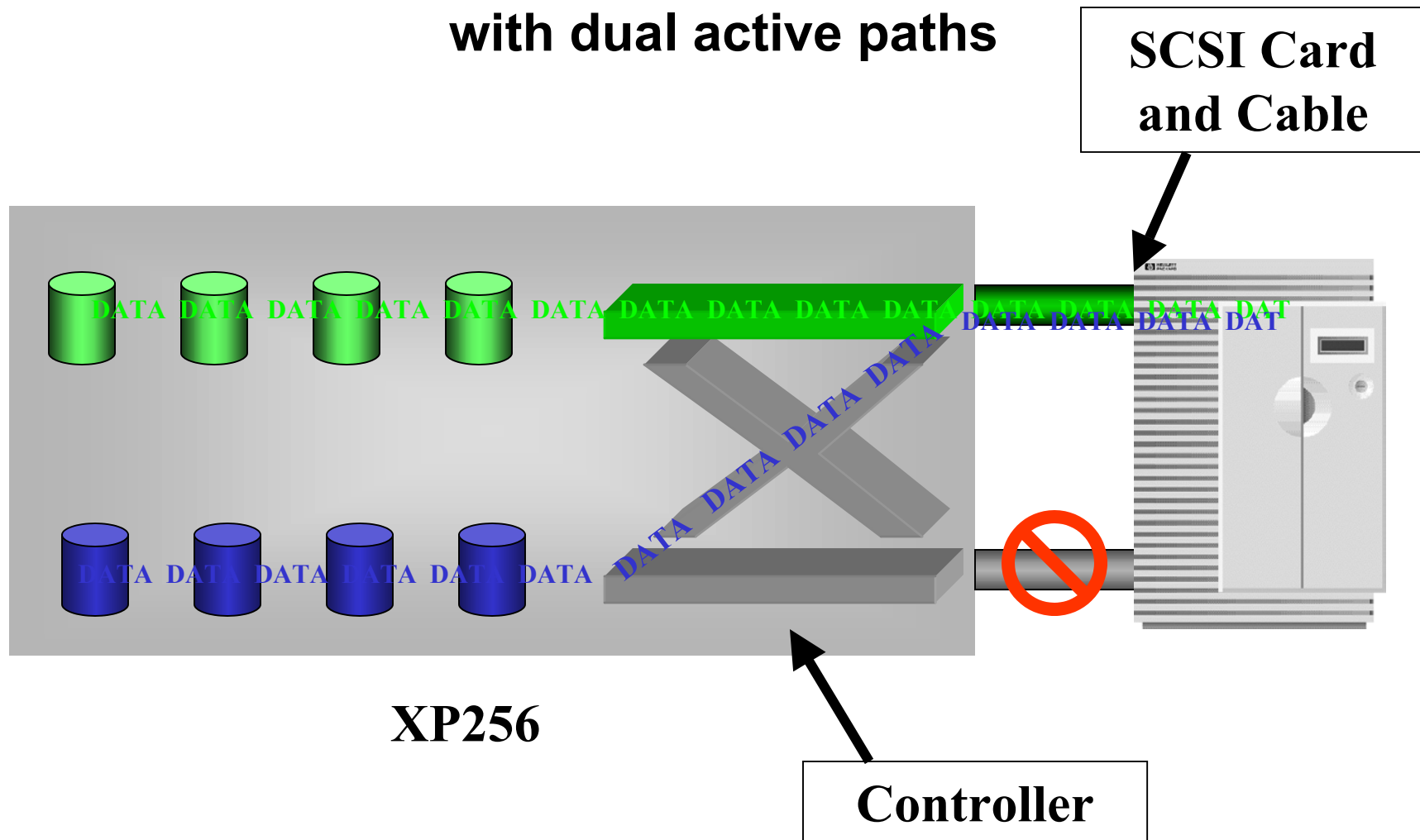
- User is responsible for user/account structure migration issues\*
- User is responsible for third party application copies
- User is responsible for IP address migration\*
- Doesn't play well with Failover/iX

\*HP consulting solves these in its implementation service

## high availability failover with dual active paths

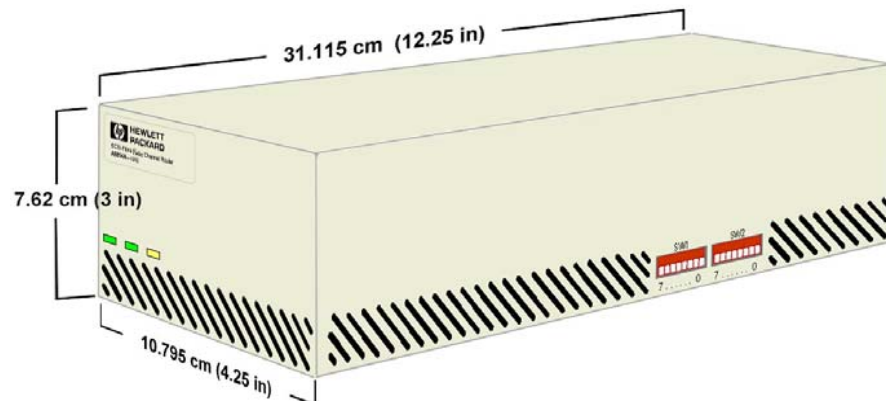


## high availability failover with dual active paths

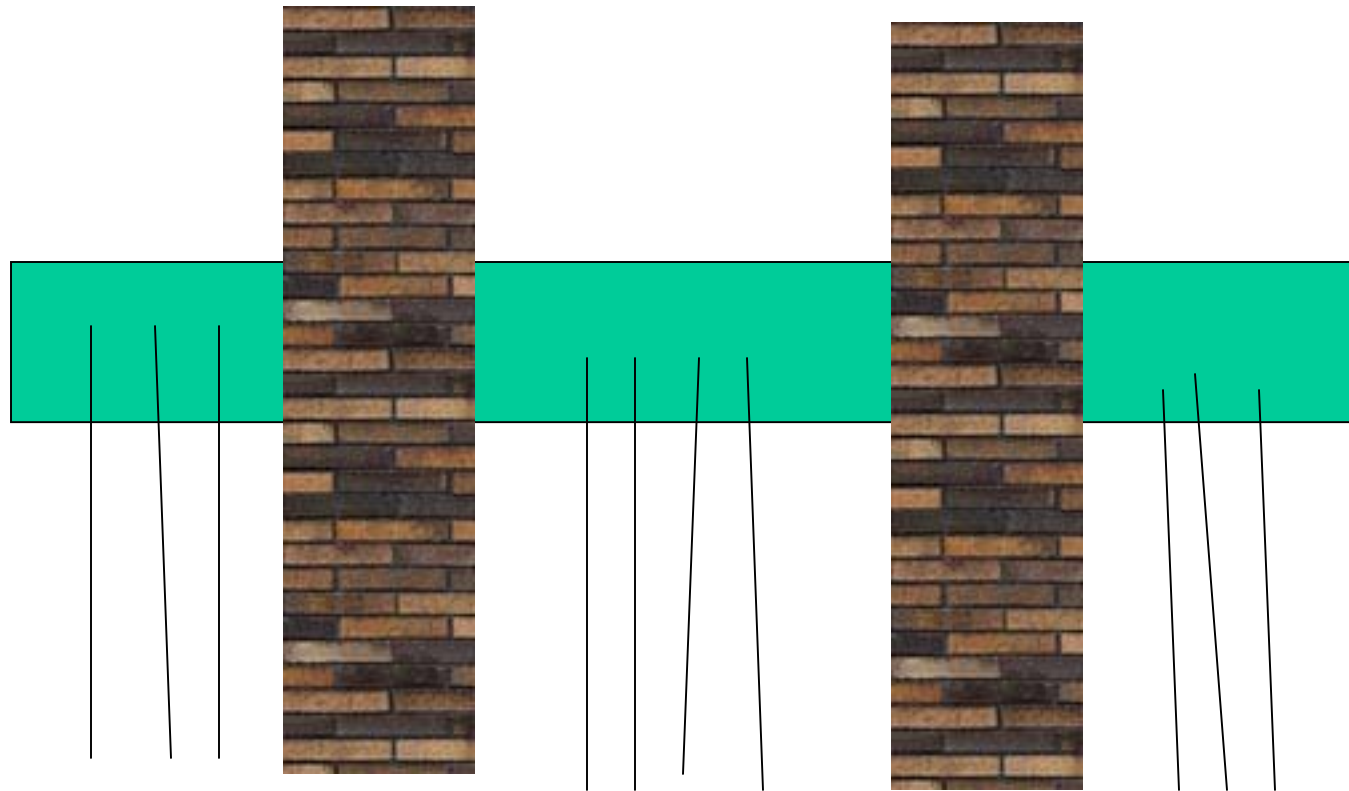


## Fabric Router

- allows legacy systems connectivity to FC storage
- supports the VA7100, XP48 and XP512
- can be deployed in a SAN topology
- supports the 2400 and 2800 Brocade Silksworm Fibre Switches
- is independent of any switch zoning configuration
- currently for 6.5 and beyond
- does not support distancing solution (SCSI-FC-SCSI)



Brocade Switch  
2400 Silkworm 8 port  
2800 Silkworm 16 port



## Lets Build a SAN Cluster

### Problem: Airline and shipping

- Reservation system almost 24x7
- Sales and accounting
- Development machine
- No disaster tolerance yet.

### Criteria

- Res system is critical to business  
loss of machine is \$100,000 per hour
- Can live with Sales out for 1  
whole day with little impact
- Can live with Dev out for 3 days  
with no impact

### Relative performance:

|              |      |
|--------------|------|
| Res system   | 1.0  |
| Sales system | 0.75 |
| Dev system   | 0.30 |





## Reservation System

8 System volumes

16 User Volumes

24 Luns

## Sales System

4 Systems volumes

8 User volumes

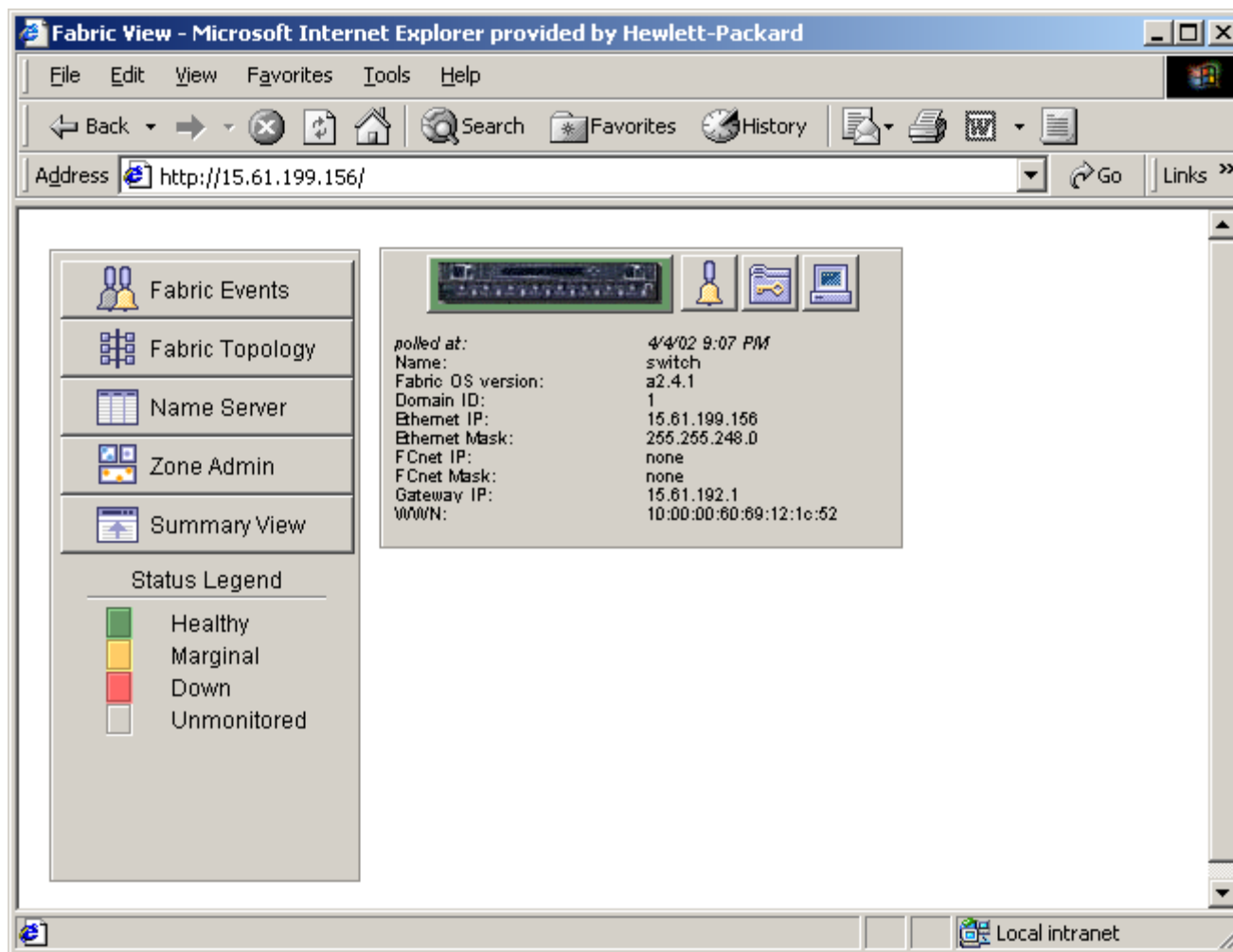
12 Luns

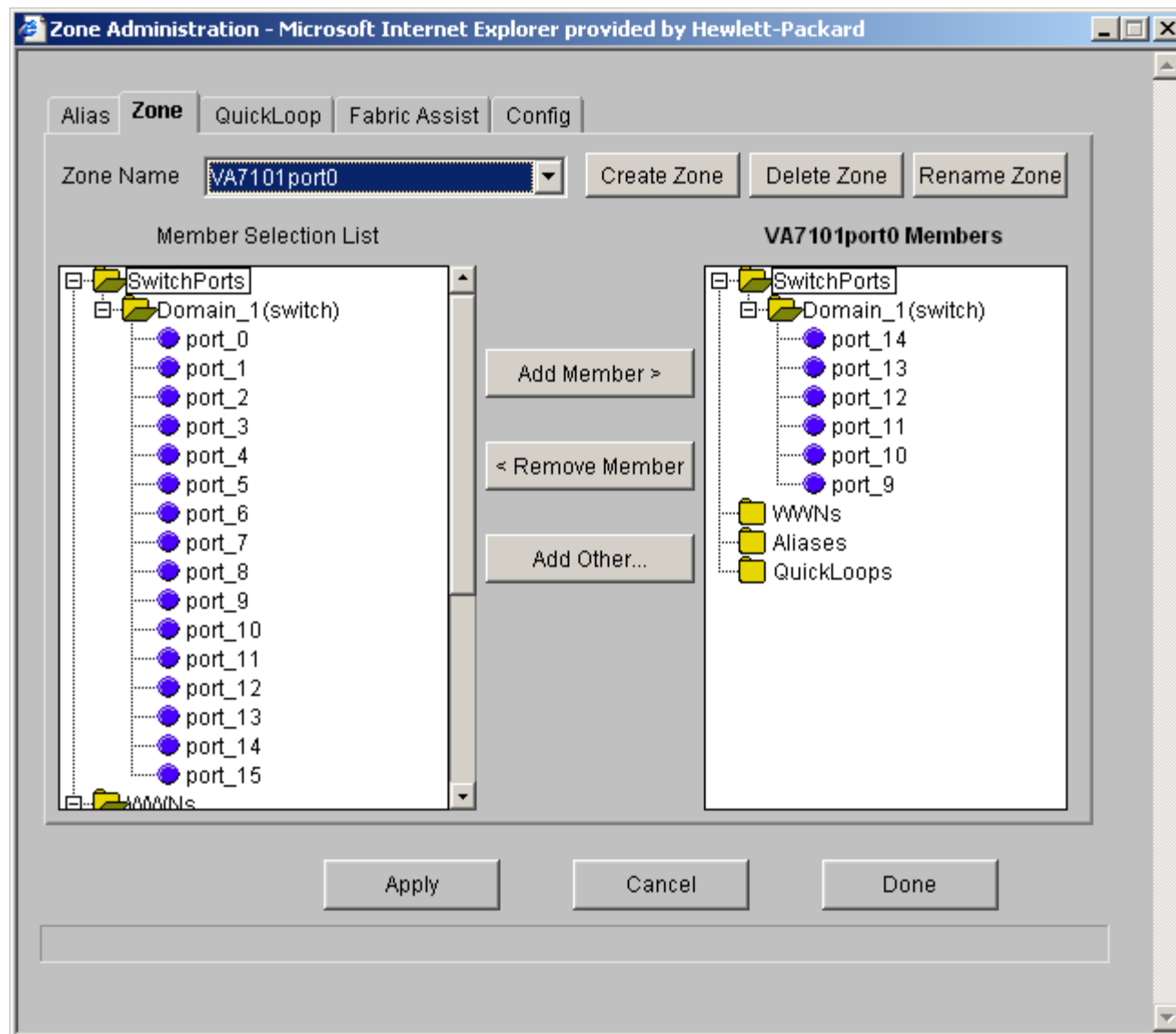
## Development System

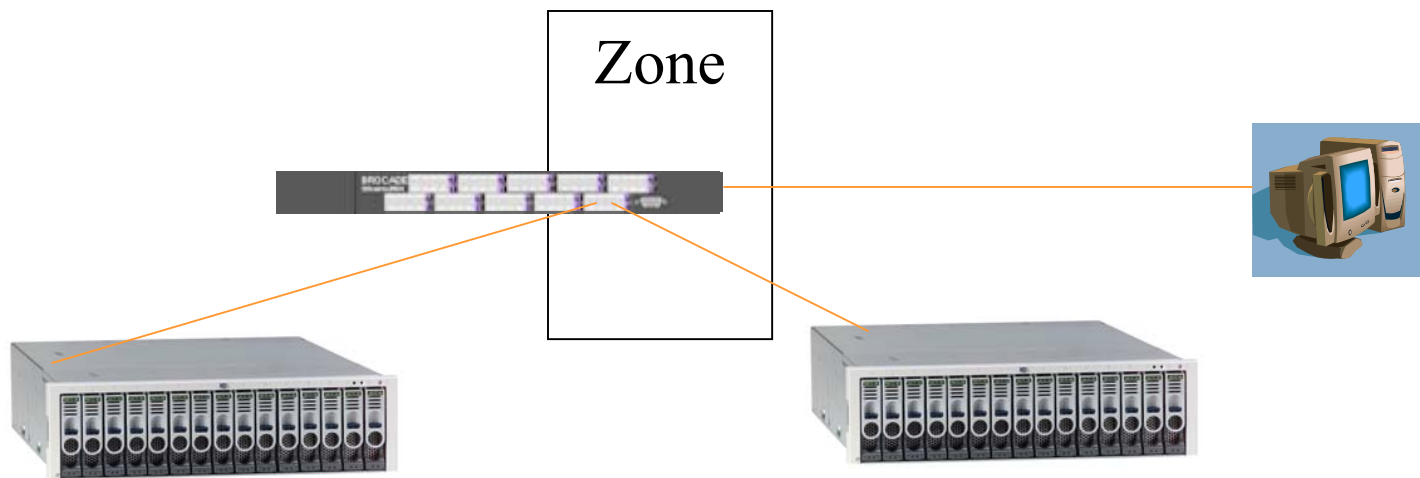
4 System volumes

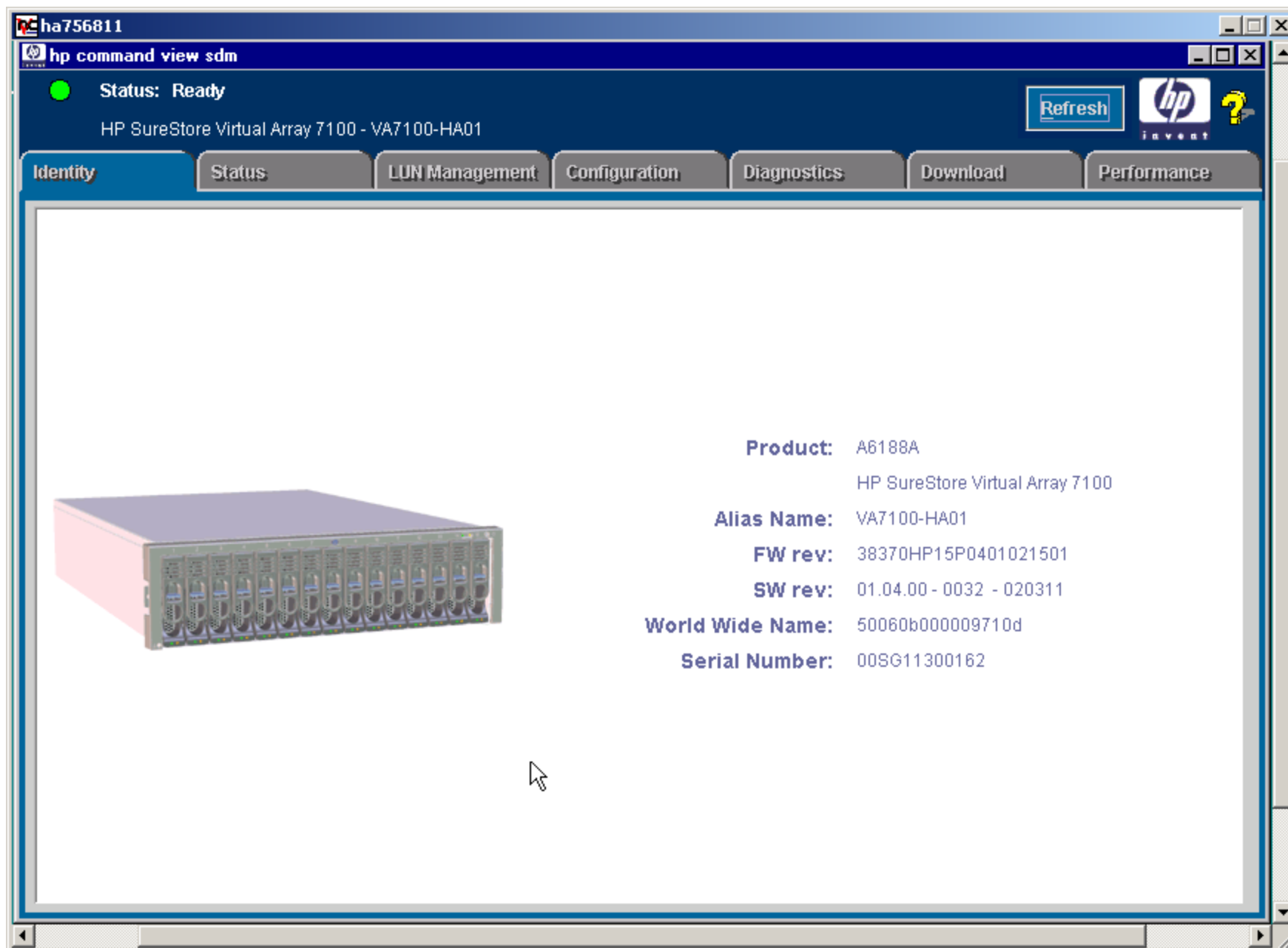
8 User volumes

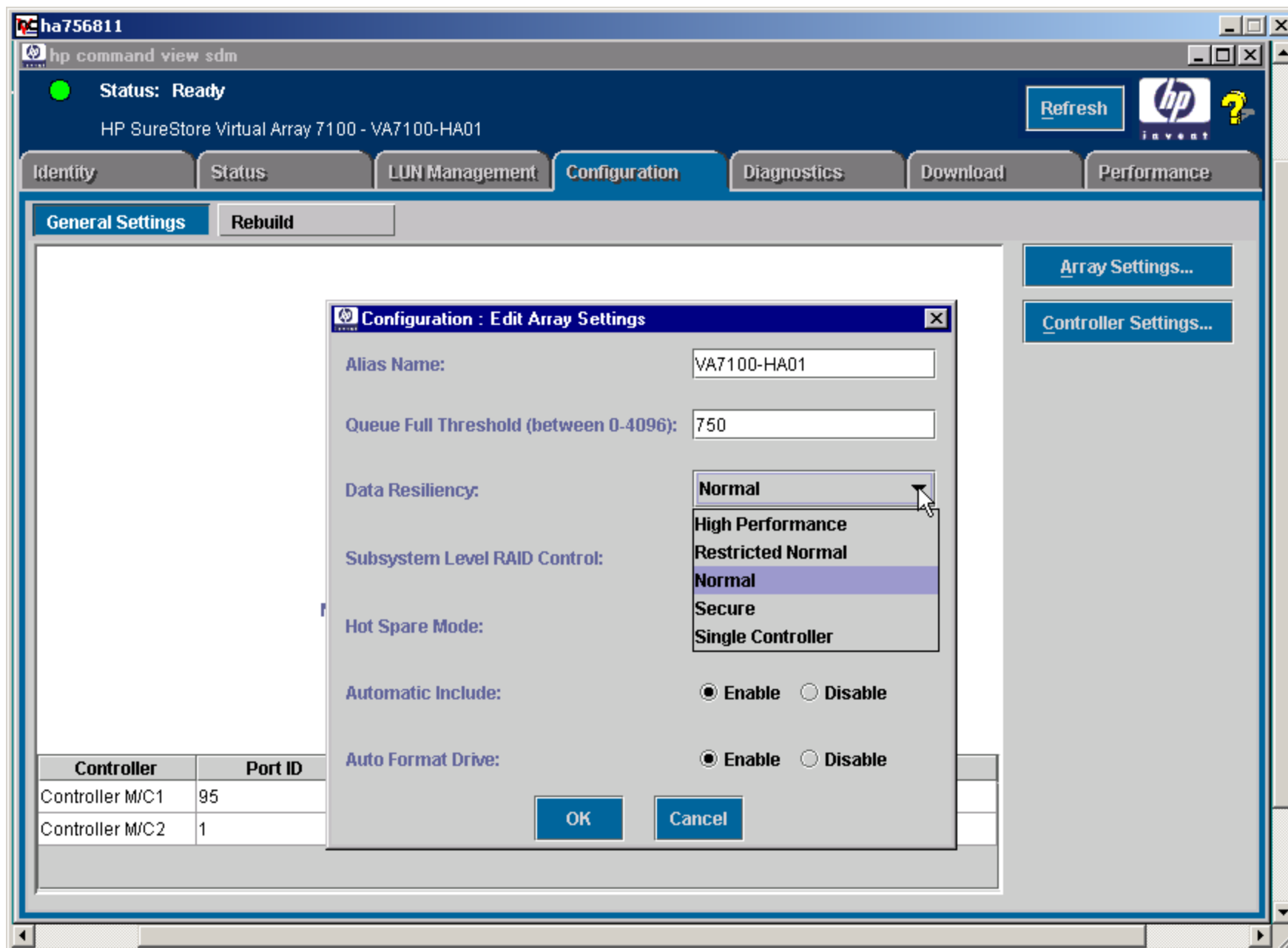
12 Luns













ha756811

hp command view sdm

Status: Ready

Refresh

HP SureStore Virtual Array 7100 - VA7100-HA01

Identity

Status

LUN Management

Configuration

Diagnostics

Download

Performance

General Settings

Rebuild

Array Settings...

Controller Settings...

Alias Name: VA7100-HA01

Configuration : Edit Controller Settings

Select Controller: Controller M/C1

Subsystem

Port ID: 95

Maximum

Port Behavior: HPUX

Port Topology: Private Loop

OK

Cancel

| Controller      | Port ID | Port Behavior | Port Topology |
|-----------------|---------|---------------|---------------|
| Controller M/C1 | 95      | HPUX          | Private Loop  |
| Controller M/C2 | 1       | HPUX          | Private Loop  |





ha756811

hp command view sdm

Status: Ready

Refresh

HP SureStore Virtual Array 7100 - VA7100-HA01

Identity

Status

LUN Management

Configuration

Diagnostics

Download

Performance

General Settings

Rebuild

Array Settings...

Controller Settings...

Alias Name: VA7100-HA01

Configuration : Edit Controller Settings

Select Controller: Controller M/C1

Subsystem

Port ID: 95

Maximum

Port Behavior: HPUX

Port Topology:

Windows NT

Windows 2000

Linux

Solaris

AIX

NetWare

MPE

Tru64



| Controller      | Port ID | Port Behavior | Port Topology |
|-----------------|---------|---------------|---------------|
| Controller M/C1 | 95      | HPUX          |               |
| Controller M/C2 | 1       | HPUX          |               |

ha756811

hp command view sdm

Status: Ready

Refresh

Identity

Status

LUN Management

Configuration

Diagnostics

Download

Performance

Logical LUNs

Business Copy

Secure Manager

| LUN ID | Redundancy Group | Capacity    | Size |
|--------|------------------|-------------|------|
| 0      | 1                | <div></div> | 5 GB |
| 1      | 1                | <div></div> | 5 GB |
| 2      | 1                | <div></div> | 5 GB |
| 3      | 1                | <div></div> | 5 GB |
| 4      | 1                | <div></div> | 5 GB |
| 5      | 1                | <div></div> | 5 GB |
| 6      | 1                | <div></div> | 5 GB |
| 7      | 1                | <div></div> | 5 GB |
| 8      | 1                | <div></div> | 5 GB |
| 9      | 1                | <div></div> | 5 GB |
| 10     | 1                | <div></div> | 5 GB |
| 11     | 1                | <div></div> | 5 GB |
| 12     | 1                | <div></div> | 5 GB |
| 13     | 1                | <div></div> | 5 GB |
| 14     | 1                | <div></div> | 5 GB |
| 15     | 1                | <div></div> | 5 GB |

Create LUN...

Delete

Create Copy...

LUN Management : Create LUN

LUN number (between 0-127): 16

Redundancy Group: 1

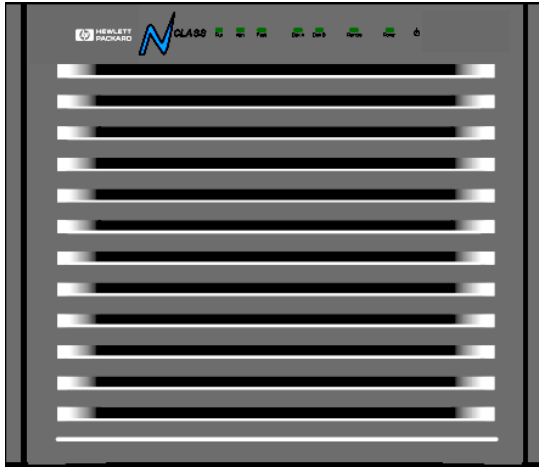
Redundancy Group 1 Available Storage: 23.634 GB

LUN Size in GB:

OK

Cancel

Redundancy Group 1 Available Storage: 23.634 GB



SCSI



Fibre  
Channel



Clear Router Map Table



Normal Operation



# Cluster/iX Setup

SXUtil

:SXOMAKELABEL RES\_DBSET 100

:exit

<< Then boot Sales and/or Dev system >>

# Cluster Heartbeat

```
!job beat,manager.sys
!SXUtil
Verify off
Sxobeat RES_DBSET 50 2
Exit
!comment      If beat terminates Emergency close volumes because
!comment      the other machine accidentally took over
!VSCLOSE RES_DBSET;now
!TELLOP      Help me mister wizard
```

# Cluster Listen

```
!job listen,manager.sys
!SXUtil
Verify off
SXOListen RES_DBSET 50 120 2
Exit
!comment      Heartbeat stopped
!comment      Take over volume set
!SXUtil
verify off
SXOsetlabel RES_DBSET 50
Exit
!VSOPEN RES_DBSET
!Stream IPMigrat.Job.Sys
!Stream Launch.App.Sys
!TELLOP      Ready to go
!stream Jbeat.job.sys
!Eoj
```