



HP e3000 Database Migration

***Finding YOUR
migration path***

Nicolas Fortin

Product Marketing Mgr
Speedware Corporation

SPEEDWARE



Agenda

- Options available to you
- e3000 migration overview
- Application migration
- Database migration
- Special topics
- How Speedware can help



SPEEDWARE

Corporate Profile

- Established in 1976
- Publicly traded since 1994 (TSE:SPW)
- Profitable - \$16M in revenue
- 3000+ Clients world-wide
- A world-wide network of distributors covering over 35 countries
- We have helped many customers migrate their applications and databases
- **HP Platinum Transition Partner**





Overview of options available to you

SPEEDWARE



Overview of options available to you

- Stay on e3000
 - Solutions for continued support
 - Solutions for continued maintenance/hardware upgrades
 - Different solutions
 - MPE emulators
 - MPE open source
 - Open MPE movement

SPEEDWARE




Overview of options available to you

- Move to Unix or PC
- Applications decisions
 - Replace
 - Re-develop (re-write)
 - Migrate
 - A combination



SPEEDWARE



Migration overview

SPEEDWARE



Migration overview

- Definition
 - Move to another platform and keep your applications



SPEEDWARE



Migration overview

- Components of an e-3000
 - Hardware
 - OS
 - Applications (3GL, 4GL, XL libraries)
 - Databases and files
 - Maintenance and misc. utilities



SPEEDWARE



Analyze current system

- CPUs, users, connections, databases, disk space
- Applications (critical, non-critical, purchased)
- 3rd party vendors for all apps and tools
- Types of languages
- User interface
- Data entry screen tools
- Development tools
- Operational tools
- Critical state preservation



The Hardware Platform

- UNIX vs Windows
- Sticking with HP or considering other vendors?

HP9000 (HP-UX)
IBM RS6000 (AIX)
SUN (Solaris)

HP NetServer
IBM NetFinity
Dell
(NT / 2000 / XP)


- Which platform is best supported by the majority of my vendors?

SPEEDWARE



Migration overview

- Decide which components you need to keep
- Investigate components to be migrated
- Investigate components to be replaced
- Investigate components to be re-written



Application Migration

SPEEDWARE




General issues

- Migrate, replace, re-write, combo?
- Keep same User Interface or Improve
- Keep same functionality of improve



SPEEDWARE



Third Generation languages

- Types
 - Cobol, Fortran, C, SPL, Pascal, RPG, BASIC
- New platform support?
- Adapting your applications
 - Migration engines
 - Manually
- Execution engines
 - Emulators
 - API mappers

SPEEDWARE



OS specifics

- CI commands
- File system access
- JCL
- Spoolfiles
- File equations
- Etc.



SPEEDWARE



Fourth Generation languages

- Speedware/4GL
- HP Transact (end of life)
 - Speedware migration solution
- Cognos Powerhouse (end of life)

SPEEDWARE



Executable Libraries (XL)

- Proprietary name but general concept
- Used to “call” sub-routines or programs stored in libraries
- Unix has the equivalent with Shared/Archived Libraries
- Windows has the equivalent with DLLs

SPEEDWARE



Database Migration Overview

SPEEDWARE



Database migration

- Types
 - TurboImage
 - Omnidex, Superdex, TPI, others
 - Allbase
 - KSAM
 - Flat (circular, msg, RIO, etc.)

SPEEDWARE



POP QUIZ

- What database technology are you using?
 - Image
 - Omnidex
 - Allbase
 - Ksam
 - Other

SPEEDWARE



Overview

- Most popular databases used do not exist on Unix or Windows
- Migration really means conversion
- Years of experience to learn from



SPEEDWARE



Turbolmage overview

- History
- Strengths
- Weaknesses
- Unique features
 - Dsets and Items
 - Master/Detail
 - Keys
 - Migrating secondaries, etc.
- 3rd party Indexing



SPEEDWARE



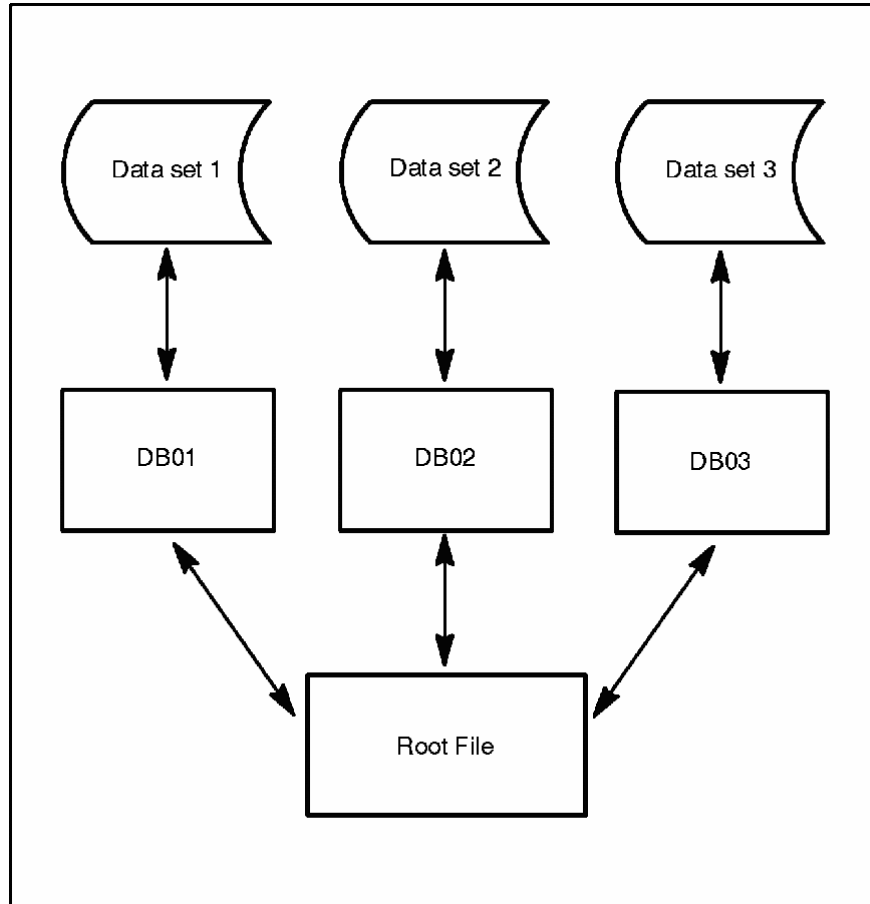
Specific concepts

- Network topology
- DBSCHEMA
- DBUTIL
- Free
- Stable, Efficient, trustworthy



SPEEDWARE

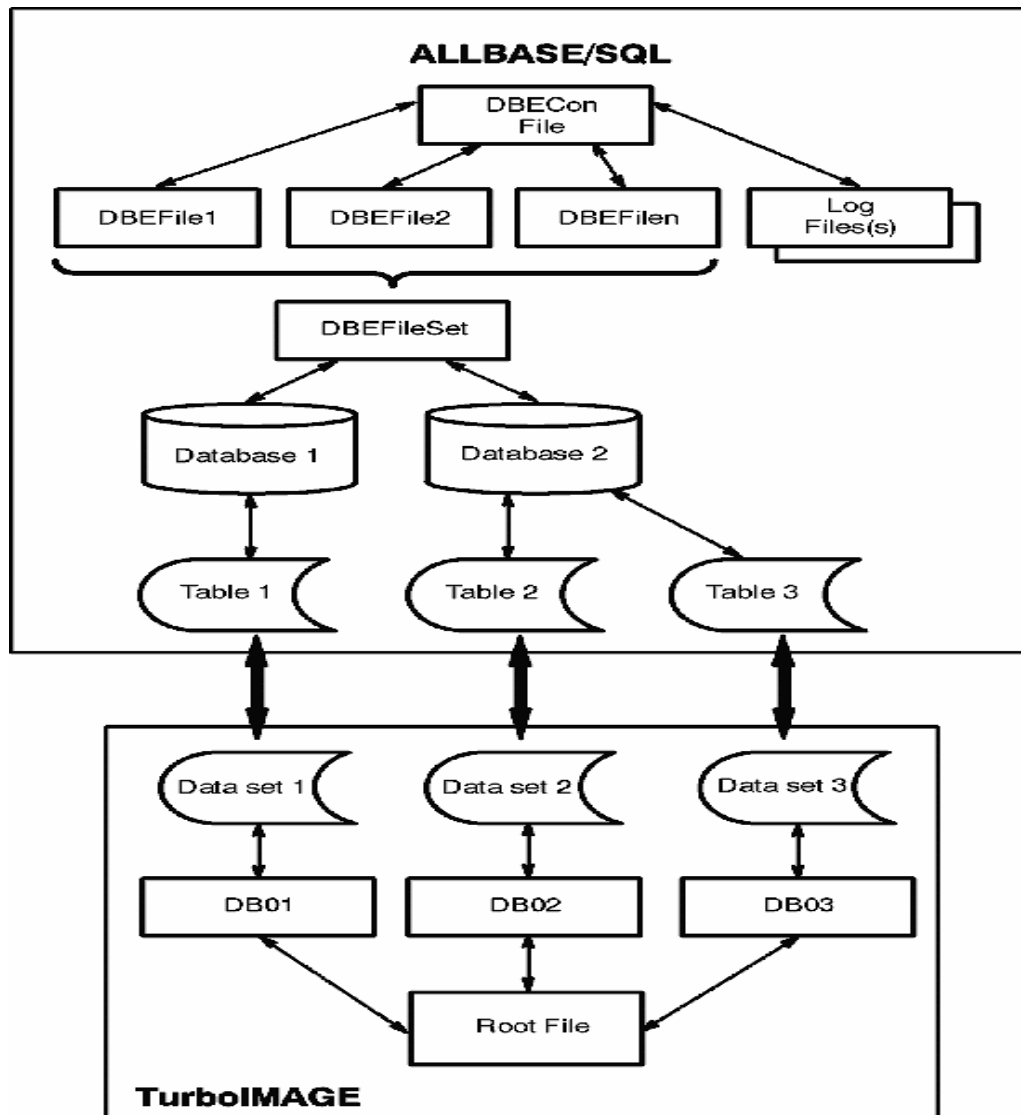
Turbolmage concept



LG200219 001

SPEEDWARE

Image/SQL concept



SPEEDWARE



RDBMS selection

- What DB can support my existing db access needs
- Factors to consider
 - Price
 - Market share and popularity
 - Manufacturer credibility
 - Support track record
 - User license cost
 - Support and upgrade cost



SPEEDWARE



Choices

- Oracle (Unix/PC)
- SQL Server (PC)
- Sybase (Unix)
- Informix (Unix/PC)
- DB2 (Unix/PC)
- HP Eloquence (Unix/PC)
- PostgreSQL/MySQL (Unix/PC)
- C-ISAM/D-ISAM (Unix/PC)
- Access and others (PC)
- Flat (Unix/PC)



SPEEDWARE



POP QUIZ

- What database system most appeals to you?
 - Oracle
 - DB2
 - SQL Server
 - Sybase/Informix
 - HP Eloquence
 - PostgreSQL/MySQL

SPEEDWARE



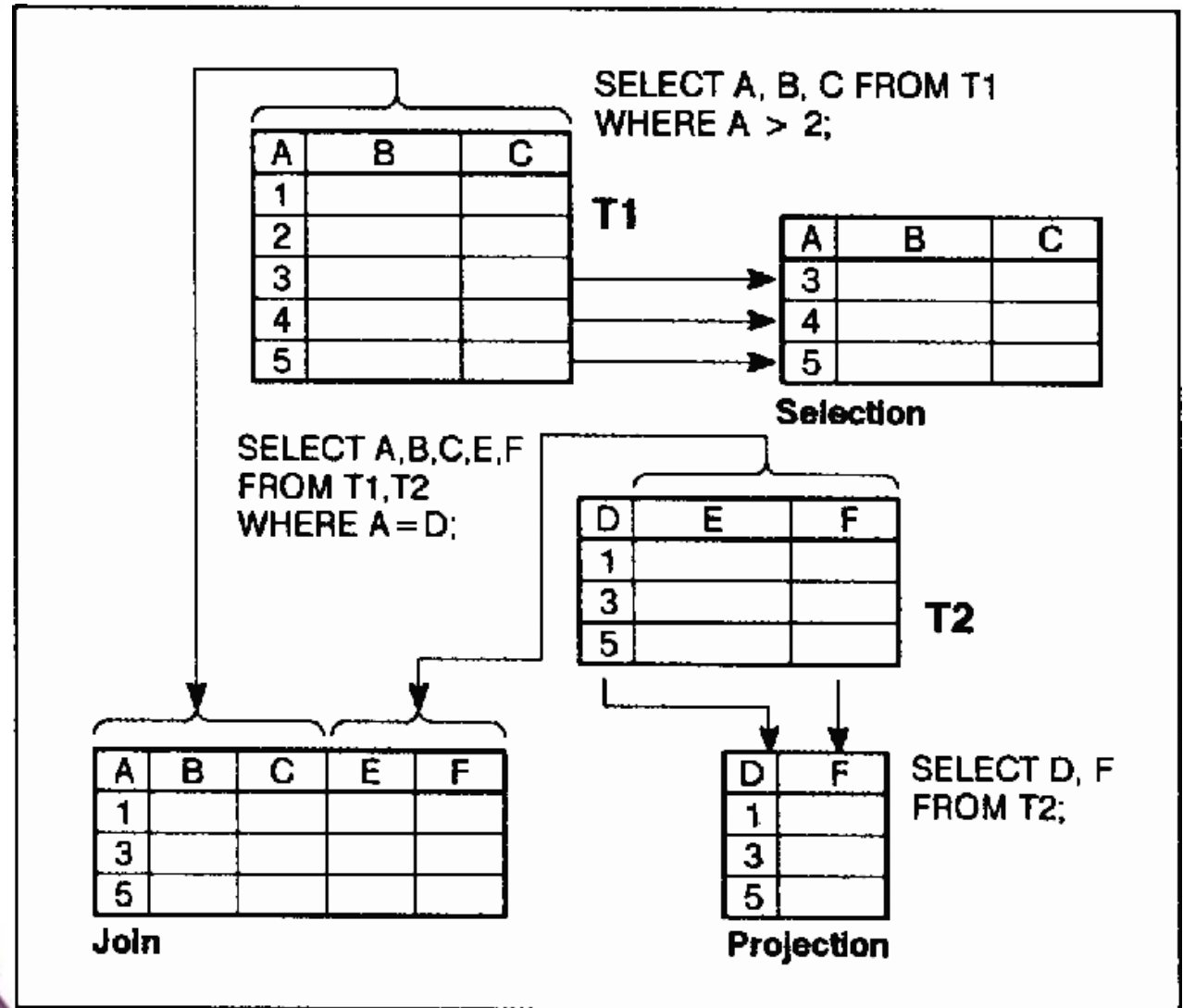
Technical aspect

- Efficiency/Performance
- Maintenance ability
- Supporting tools
- Flexibility
- Stability
- Scalability
- Administration
- Stored procedures
- Triggers
- Locking



SPEEDWARE

SQL concept





RDBMS

- Particularities
 - Tables not Datasets
 - Columns not Items, Rows not records
 - Indexes
 - Views and table joins
 - Column Item types
 - No arrays
 - Nulls
 - Triggers
 - Rollbacks
 - Data page and log file caching
 - Administration tools
- Unique features, SQL extensions
- Need a DataBase Administrator

SPEEDWARE



Database Migration Planning

SPEEDWARE



Migration planning

- Assess current environment
- Timeframe, effort, milestones
 - When can you start?
 - Test machine
 - Completion expectance
 - Prior end of 2006 or passed?



SPEEDWARE



Analyze current system

- CPUs, users, connections, databases, disk space
- Applications (critical, non-critical, purchased)
- 3rd party vendors for all apps and tools
- Types of languages
- User interface
- Data entry screen tools
- Development tools
- Operational tools
- Critical state preservation



SPEEDWARE



Analyze current DB

- Architecture of Dsets
- Security
- Types of items
- Date items
- Buffer items and redefinitions
- Dirty data
- Arrays
- Data transaction volume and performance (throughput)



SPEEDWARE



Migration planning

- New database structure
 - Identical copy (Phase 1)
 - Quicker method
 - May have performance issues
 - Not taking advantage of SQL
 - Improvements (Phase 2)
 - More effort
 - More efficient
 - SQL features, extensions, etc.

SPEEDWARE



POP QUIZ

- What strategy most appeals to you?
 - Replicate DB structure first, then enhance application
 - Enhance DB structure and application



SPEEDWARE



Migration planning

- Automatic masters disappear
- Manual masters become tables
- Detail dsets of Manual masters become table with a a foreign key constraint
- Image SORT items become clustered Indexes
- Indexed keys become Indexes and queried with LIKE operator, unless TPI continues to be used



SPEEDWARE



Migration planning

- Nulls
 - Define columns as NOT NULL
 - Least impact on code
 - Cannot take advantage of NULLs
 - Define some columns as NULL
 - May impact the code
 - Can take advantage of NULLs



Migration planning

- Arrays
 - Method 1: One big column
 - Some code changes may be required
 - Method 2: 1 column per occurrence
 - Some code changes required
 - Method 3: New table, one row per occurrence
 - Significant code changes required
 - More flexible



Migration planning

- Dates
 - CHAR 8
 - Keep as is
 - Does not impact code
 - Change to Datetime/Timestamp
 - Consider if time logging is needed
 - Consider to take advantage of Datetime features
 - Some code changes may be required
 - Julian
 - Keep or Change concept



Migration planning

- Integers
 - RISC: Keep same format
 - CISC: Little/Big endien issue



SPEEDWARE



DB access application code

- Can you keep the code as is?
- Define access method
 - Native
 - API mappers
 - ODBC/ADO/JDBC/etc.

SPEEDWARE



POP QUIZ

- What method of database access most appeals to you?
 - Image Intrinsic through mapper
 - Native SQL
 - ODBC/ADO/JDBC

SPEEDWARE



Data replication & consolidation

- Export/Import
- DB migration tools
- Write your own transfer programs



SPEEDWARE



POP QUIZ

- What database migration method most appeals to you?
 - Export/Import
 - Using a tool
 - Writing transfer programs



SPEEDWARE



Tests and refinement

- Migration tests
 - Data integrity tests
 - Application data access tests



SPEEDWARE



Database migration

- One-shot approach?
- Running systems in parallel
- Database mirroring
 - Bulk
 - Live

SPEEDWARE



POP QUIZ

- No updates: Only use the target database for testing, until ready for production
- Periodic updates: Keep new DB periodically up-to-date
- Live updates: Keep new DB constantly up-to-date



Migration planning

- Features = changes
- Don't over do it
- Ensure that new db type and structure will be compatible with the existing apps



SPEEDWARE



Migration planning

- Second phase improvements
 - Normalization
 - Views and table joins
 - Code optimization for direct SQL access
 - DateTime
 - Null items
 - Triggers



SPEEDWARE



Database Migration Implementation

SPEEDWARE



Setup new RDBMS

- The DBA issue
 - Training, hiring
 - Remote access
- Install new db on new platform
- Make minimum access and configuration adjustments
- Create test database
- Link machines on network



Migration implementation

- Make copy of source database
- Create new db structure
 - Native RDBMS tools
 - Native Schema scripts
 - Automated tools
- Consolidate and Replicate the data
- Data mirroring



SPEEDWARE



Migration implementation

- Export/Import
 - Export data to flat files
 - Endian issue
 - Build import scripts
 - Column conversions
 - Nulls
 - Dates
 - Arrays
 - Security
 - Import data from flat files through scripts

SPEEDWARE



Migration implementation

- Data replication tools
 - GUI
 - Global changes
 - Column types conversions
 - Endian issue
 - Arrays
 - Nulls
 - Dates
 - Security
 - In-flight transformation
 - Mirroring features



SPEEDWARE



Migration implementation

- Indexing software
 - Omnidex -> OmniAccess
 - No Superdex supported



SPEEDWARE



Application adaptation

- DB access method
 - Native
 - API mappers
 - ODBC/ADO/JDBC
- JCL/CI commands, etc.
- Test programs and refine code



SPEEDWARE



POP QUIZ

- What migration method most appeals to you for OS specific concepts?
 - Re-write into native commands
 - Use tool to convert into native commands
 - Run your commands within an emulator



SPEEDWARE



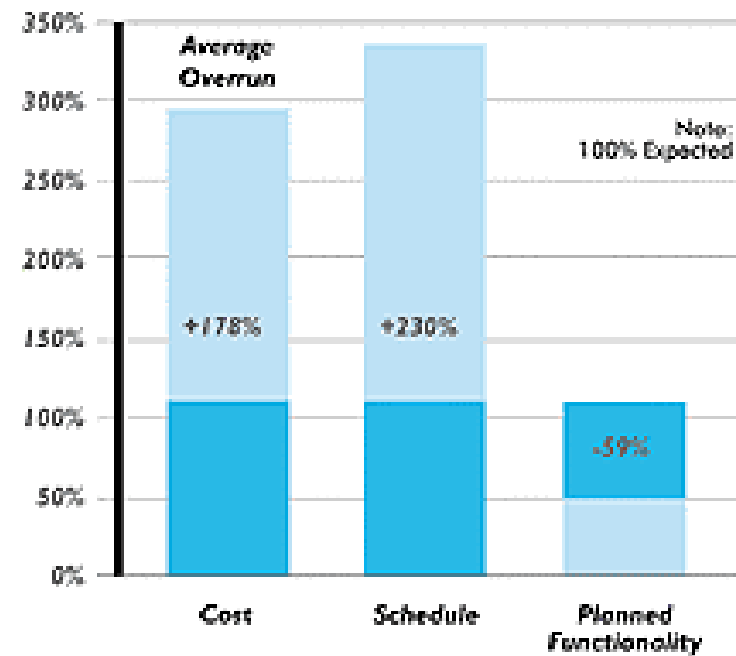
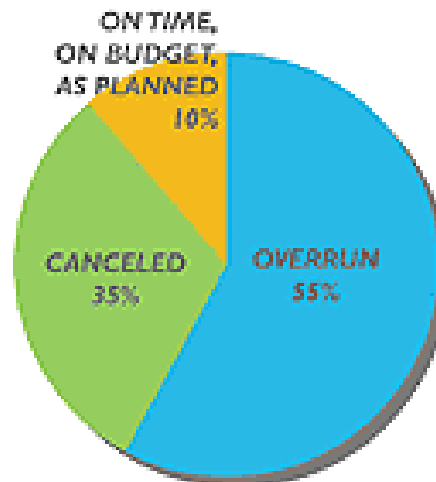
Special Topics

Best-of-breed package
software

SPEEDWARE

Beware of False Prophets

ERP Implementation Results



Source: Standish Group

SPEEDWARE



SPEEDWARE

The Speedware Difference

Your trusted transition
partner





How Speedware is involved

- End-to-end migration solutions offering
 - 3GLs, 4GLs, Databases
 - Hardware procurement
 - Recommendations
- Wide range of tools
- Professional Services
- Consortiums
- Presentations/Seminars



SPEEDWARE



POP QUIZ

- What languages do you currently use?
 - Cobol
 - VPLUS
 - Fortran
 - Pascal
 - HP Transact
 - BASIC
 - RPG
 - Powerhouse

SPEEDWARE