

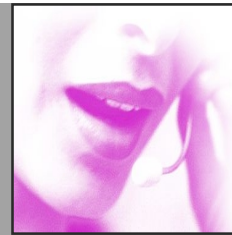
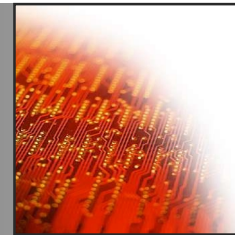
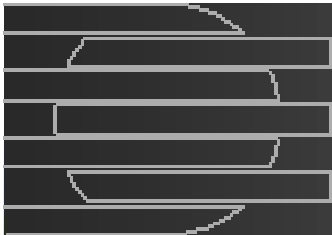


NEARTEK presentation

Ernesto SORIA Sales Director AMXW cell +33 613 081 531

ernesto.soria@neartek.com

Philippe DONZE Chief Technical Officer AMXW product-line



Migration made easier



Migration made easier



Neartek Inc.

Software Editor

Head Office: Neartek Inc. (Lakeville, USA)

Europe Office: Villebon-sur-Yvette, France

Employees: 150

Main activities:

- ❑ Virtual storage product-line (VSEngine) 8 years
- ❑ Migration product line (AMXW) 10 years
- ❑ Professional services 5 years



Migration made easier



Neartek in Numbers

R&D locations France

- Fontenay-le-Fleury: VSEngine, Serverless backup
- Villebon-sur-Yvette: AMXW product line

Installations

Over 80 VSEngines worldwide

Over 250 machines running AMXW worldwide



Neartek Partners

For virtual storage solutions

IBM, UNISYS, AMDAHL,
STORAGETEK, ADIC, ATL, EXABYTE
CROSSROADS

For HP3000 migrations

HP, ORDAT, OPENSEAS, DENKART, UNILOG, ARES, CIRIL,
DATASTREAM, LUND, TJ-SYSTEMS, MB FOSTER



Migration made easier



Environments AMXW migrates

▣ Applications

Databases:	IMAGE/TURBOIMAGE, ALLBASE
Files:	SEQUENTIALS, MESSAGE, KSAM, SPOOL
Programs:	COBOL, FORTRAN*, SPL, C, PASCAL*
Screens:	VPLUS
System calls:	Intrinsics
JCL:	COMMANDS, UDC
Utilities:	SORT/MERGE, FCOPY, KSAMUTIL

• *HP-UX



Migration made easier



AMXW Compatibility

▣ Target environments

UNIX
HP-UX



Linux RedHat



WINDOWS
NT4



Migration made easier



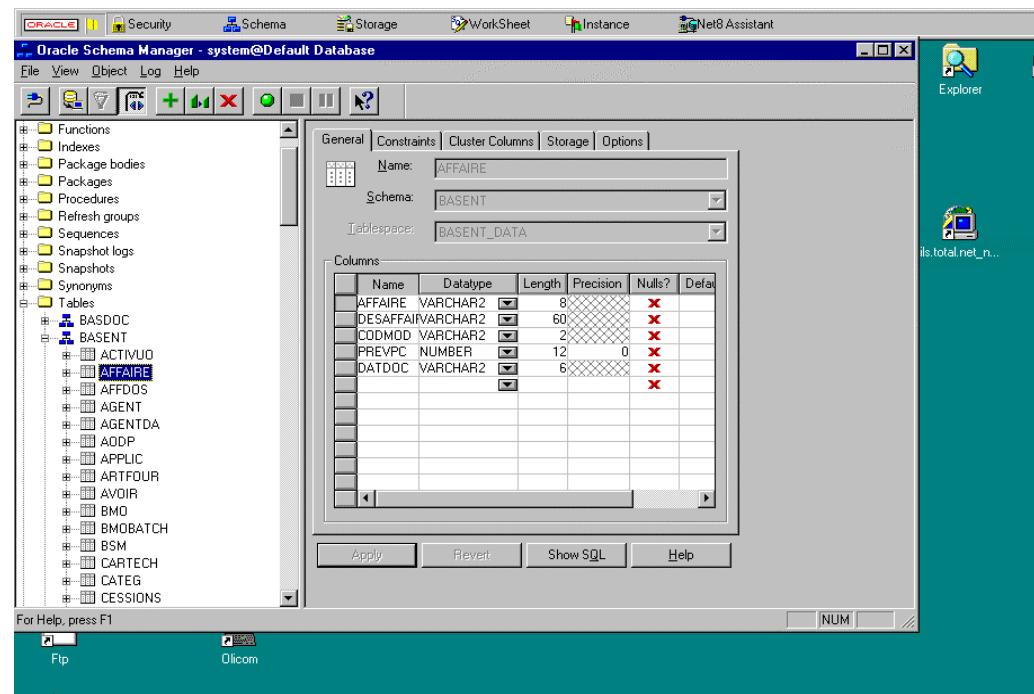
Neartek Partners

Multi-Target Relational Database

ORACLE

ORACLE

HP ELOQUENCE



www.neartek.com

Migration made easier



Neartek Partners

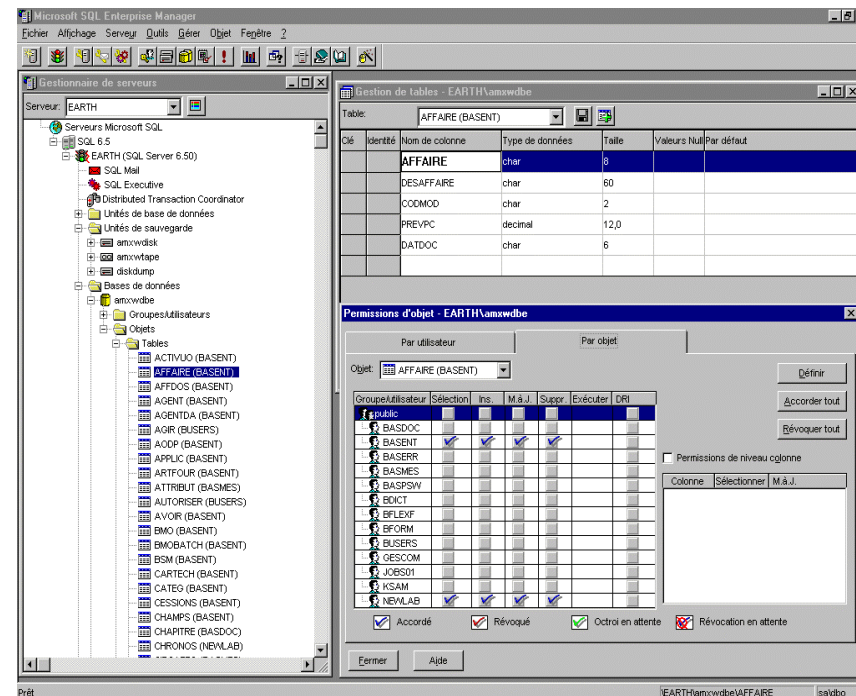
■ MICROSOFT SQL SERVER



■ INFORMIX, INGRES SYBASE

Automated generation of relational database schemas

- Able to transparently normalize against programs
- Source data unload/reload
- Able to change KSAM (indexed) fields to database tables
- Just relink and modify a variable environment to change the relational database



Migration made easier



Neartek Partners

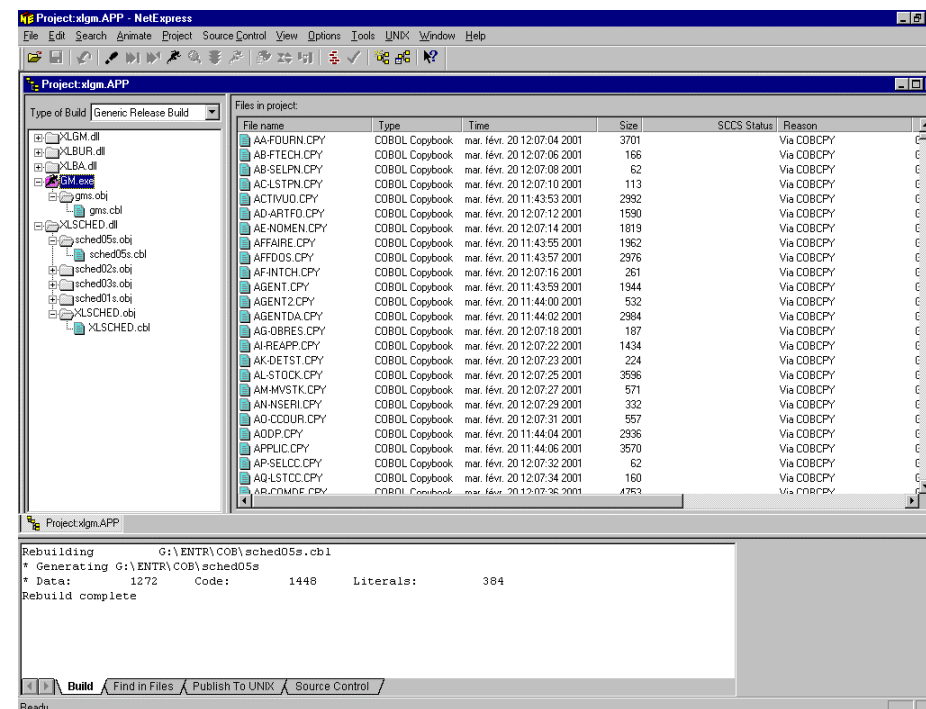
■ A recognized multi-computer compiler

- MICROFOCUS COBOL*
- MICROFOCUS NETEXPRESS**



* All Unix/Linux computers

**Windows NT



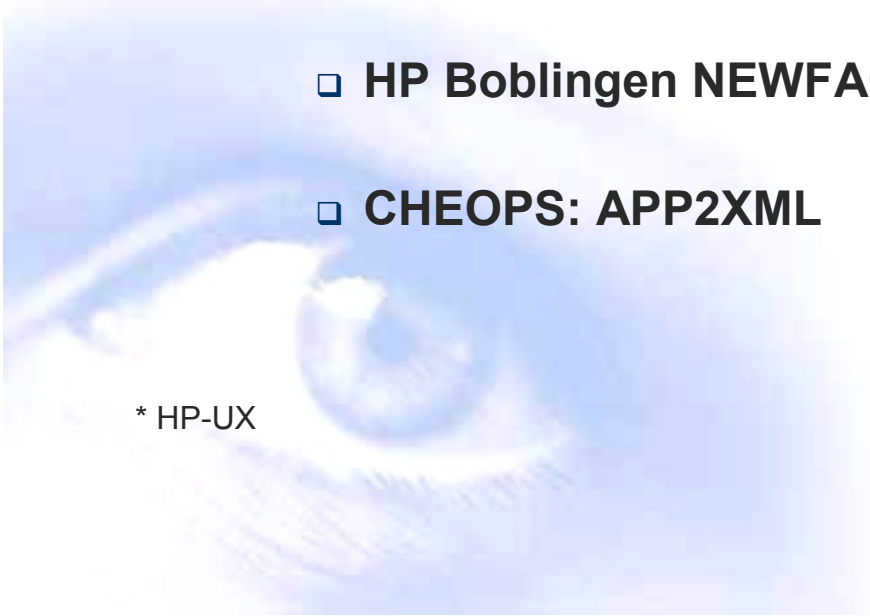


Migration made easier



Neartek Partners

- ❑ Screen interfaces integrated by well-known companies
 - ❑ Ordina Denkart: edWin/3K
 - ❑ HP Boblingen NEWFACE: Windows-like*
 - ❑ CHEOPS: APP2XML



* HP-UX



Migration made easier



AMXW Simplicity

- ❑ Most system calls (intrinsic) developed with common parameters
 - ❑ **IMAGE** (*Dbbegin, Dbclose, Dbdelete, Dbend, Dberror, Dbexplain, Dbfind, Dbget, Dbinfo, Dblock, Dbopen, Dbput, Dbunlock, Dbupdate*)
 - ❑ **KSAM** (*Ckclose, Ckdelete, Ckerror, Cklock, Ckopen, Ckopenshr, Ckread, Ckreadbykey, Ckrewrite, Ckstart, Ckunlock, Ckwrite*)
 - ❑ **FILES** (*Fcheck, Fclose, Fcontrol, Fdelete, Ferrmsg, Ffileinfo, Fgetinfo, Flock, Fopen, Fpoint, Fread, Freadbackward, Freaddir, Freadlabel, Freadseek, Frename, Fsetmode, Fspace, Funlock, Fupdate, Fwrite, Fwritedir, Fwritelabel, Genmessage, Iodontwait, Iowait, Print, Printfileinfo, Read, Readx*)
 - ❑ **PROCESS** (*Activate, Create, Createprocess, Father, Getprocid, Getprocinfo, Kill, Quit, Suspend, Terminate*)
 - ❑ **COMMANDS** (*Command, Hpcicommand, Mycommand*)



Migration made easier



AMXW Simplicity

- ❑ Most system calls (intrinsic) developed with common parameters
 - ❑ **RESOURCES** (*Dmovin, Dmovout, Freedseg, Mail, Receivemail, Sendmail, Freelocrin, Getlocrin, Locklocrin*)
 - ❑ **ENVIRONMENT** (*Findjcw, Getjcw, Hpcigetvar, Hpciputvar, Putjcw, Setjcw*)
 - ❑ **OTHERS** (*Ascii, Binary, Calendar, Clock, Ctranslate, Dascii, Dateline, Dbinary, Fmtcalendar, Fmtclock, Fmtdate, Pause, Printop, Printopreply, Proctime, Search, Who*)
- ❑ **Presentation:** shared libraries (Unix/Linux) or dll (Windows)
- ❑ **Performances:** written in C. Some tests (Pitney Bowes) show our Oracle database calls are 3 times faster than those rewritten using sql
- ❑ **Debug:** intrinsic calls can be logged depending on the variable environment
- ❑ **Versatility:** Neartek can develop any new intrinsic or option that is not currently ported



Migration made easier



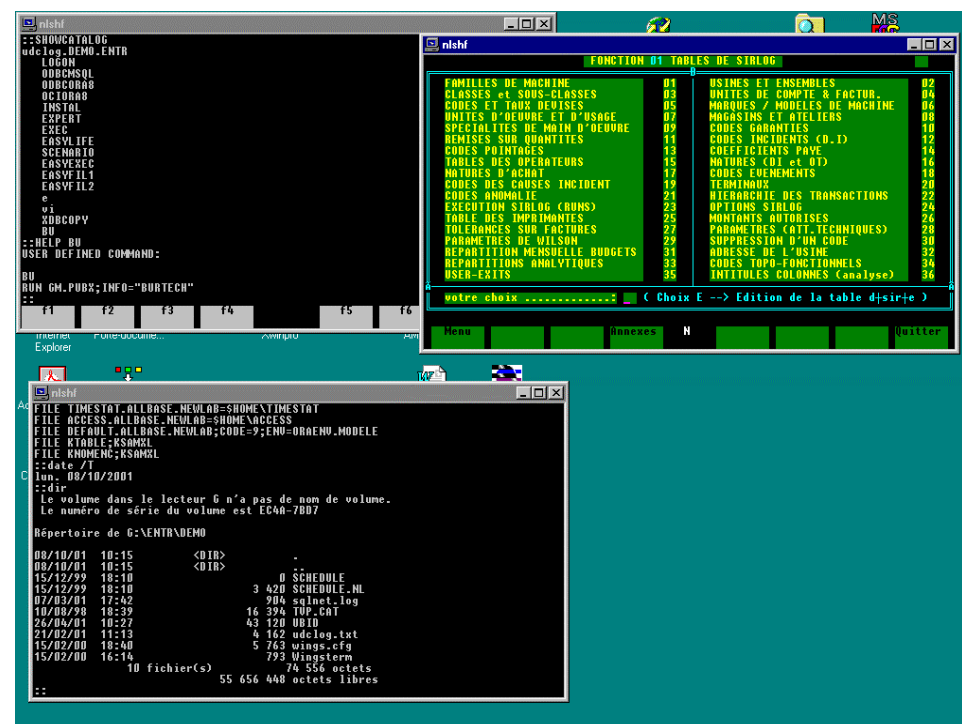
AMXW Simplicity

- ❑ Most CI commands developed with common parameters
 - ❑ **FILES FILES** (*Build, File, Listf, Listftemp, Purge, Rename, Reset, Save*)
 - ❑ **PROCESS** (*Run*)
 - ❑ **BATCH/SESSIONS** (*Stream, Job, Showjob*)
 - ❑ **ENVIRONMENT** (*Setjcw, Setvar, Listf, Listftemp, Purge, Rename, Reset, Save, Showjcw*)
 - ❑ **CI/UDCS** (*CommandFiles, Continue, Else, Endif, Eod, Eoj, Help, If, Recall, Reply, Showcatalog, Tellop*)
 - ❑ **OTHERS** (*Comment, Listacct, Listgroup*)
- ❑ **Transparency:** JCLs from jobs are translated with a few modifications because these commands are interpreted with a special shell named 'nlsh'
- ❑ **Opening:** The 'nlsh' shell is not only able to execute native commands from HP3000, but also commands from the target OS (including command files)
- ❑ **Extensions:** the print commands have a 'user exit' making it possible to call a shell script from the print command (you can write the file to a CD-ROM, to send it via email, printing it, etc.) With Unix or Linux (Linux Is Not UniX), every command from these OS's has these native possibilities.
- ❑ **Versatility:** Neartek can develop any new command or option that is not currently ported



❑ Multi-computer/Multi-version

- ❑ **Multiple HP3000 computers can be simulated on a single target computer**
NLROOTDIR: variable environment that specifies the absolute pathname of any equivalent HP3000 computer.
- ❑ **Multiple AMXW versions can be tested on a single target computer.**
- ❑ **Multiple migrated software versions can be tested on a single target computer.**



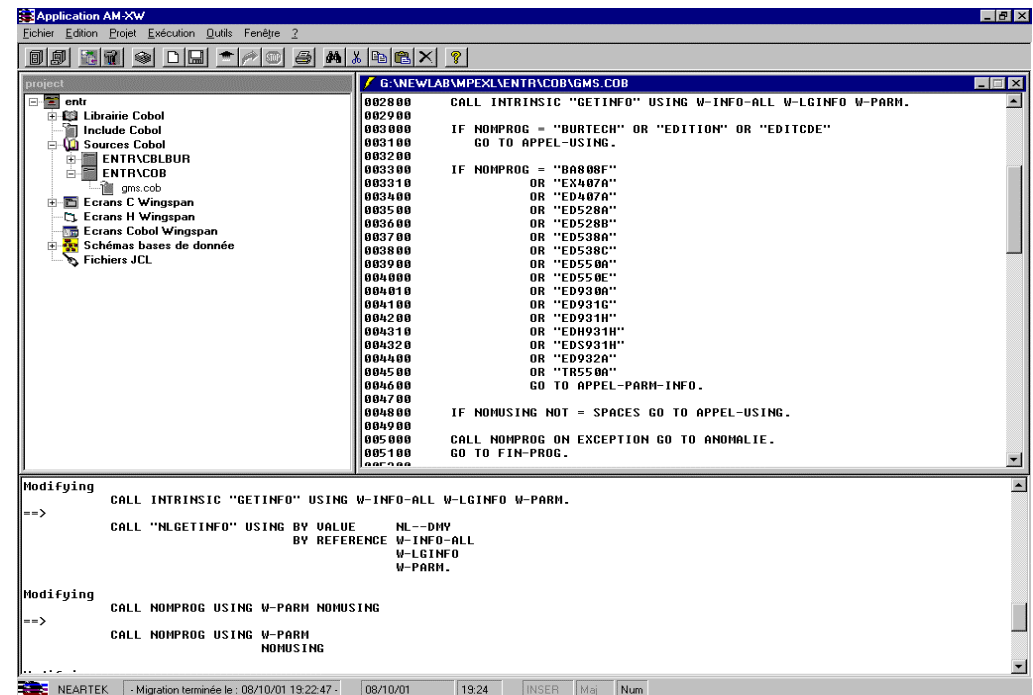


Migration made easier



AMXW Adaptable Interfacing

- ❑ Migration tools
 - ❑ Under Windows NT4
(does not need the target
computer during
migration)
Graphical interface.
 - ❑ Under Unix
Command line interface



```
002800 CALL INTRINSIC "GETINFO" USING W-INFO-ALL W-LGINFO W-PARM.
002900
003000 IF NOMPROG = "BURTECH" OR "EDITION" OR "EDITCODE"
003100 GO TO APPEL-USING.
003200
003300 IF NOMPROG = "BARRERE"
003400 OR "EX407A"
003500 OR "ED407A"
003600 OR "ED528A"
003700 OR "ED528B"
003800 OR "ED538A"
003900 OR "ED538C"
004000 OR "ED550A"
004100 OR "ED550E"
004200 OR "ED930A"
004310 OR "ED931G"
004420 OR "ED931H"
004510 OR "EDH931H"
004620 OR "EDS931H"
004700 OR "ED932A"
004800 OR "TR550A"
004900 GO TO APPEL-PARM-INFO.
005000
005100 IF NOMUSING NOT = SPACES GO TO APPEL-USING.
005200 CALL NOMPROG ON EXCEPTION GO TO ANOMALIE.
005300 GO TO FIN-PROG.
005400
```

Modifying

```
CALL INTRINSIC "GETINFO" USING W-INFO-ALL W-LGINFO W-PARM.
==>
CALL "NLGETINFO" USING BY VALUE NL--DMY
BY REFERENCE W-INFO-ALL
W-LGINFO
W-PARM.

Modifying
==>
CALL NOMPROG USING W-PARM NOMUSING
CALL NOMPROG USING W-PARM
NOMUSING
```

NEARTEK - Migration terminée le : 08/10/01 19:22:47 - 08/10/01 19:24 INSER Maj Num



Migration made easier



AMXW Success

▣ References

▣ ISVs (software editors)

ARES, CIRIL, DATASTREAM, EDS-GFI, IMPULSION, ORDAT, RCS, TJ-SYSTEMS, UNILOG, eBOOTIS (March 2002)

▣ Companies that migrated their own sources:

PITNEY BOWLES, TEFAL

▣ Customers using AMXW

ALEXANDER BINZEL GMBH, AUTOPRATIC, BRODARD GRAPHIQUES, BROSE, BUZIL, BVA, CGEP, CHAPELLE DARBLAY, COHLINE, DALIM, DETIA, DHW, DOLE, DUNLOP, EHLEBRACHT, EMIG GMBH & Co, EOSA, FRANCELOG, GTI, HELIO-CORBEIL, HAL, HELLA, HETTICH, HUTTENES ALBERTUS GmbH, ICI, IMSS, IMV, INOTECH, INOPLAST, KRUPP AUTOMOTIVE SYSTEMS GMBH, LA ROCHETTE-VENIZEL, LEMM, LUXOPLAST, MONTAVIT, NASCO, OTOR, PAD, PIAZZA, QUATP, RADSYSYSTEM GMBH, SACRED, SAS, SAXONIA, SCHI, SEB, SECURIT ST GOBAIN, SOPELEM, TJ SYSTEMS, VALOUREK, VAMAV, VENTREX, WALTER MADER AG, WERKSTOFF, WOESTE, ZALTECH, ZEIT,...