

GUI Innovations SqlLink3000

Access your SQL Databases from
your HPe3000



GUI Innovations SqlLink3000 - Overview

- SqlLink3000 builds on our base of TCP/IP and migration tools.
- SqlLink3000 has 2 constituents, a multi-threaded data server that runs on your PC server, and a library of callable routines that run on your HPe3000.

GUI Innovations

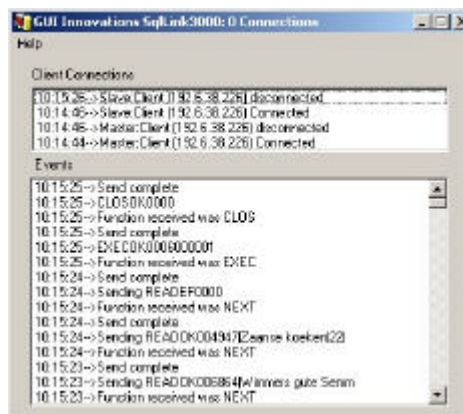
SqlLink3000 – Program ‘calls’

- **SqlConnection** – Connect to the remote data server, and open your database.
- **SqlClose** – close your database and disconnect from your remote data server.
- **SqlExec** – execute a Sql command, i.e. Insert, Update, Delete
- **SqlRead** – initiate a read operation on a table, a view, or linked tables.
- **SqlGetNext** – retrieves the next record from your database
- **SqlGetStringField** – retrieve a string field from your record
- **SqlGetIntegerField** – retrieve a numeric field from your record
- **SqlGetDecimalField** – retrieve a decimal numeric field from your record.

GUI Innovations

SqlLink3000 - Server

- Server component is multi-threaded, and caters for logging what is happening



GUI Innovations SqlLink3000 - Sample

GUI Innovations SqlLink3000
=====

Please enter the IP address of the 'Server' where
SqlLink3000 is running...213.122.63.64

Option 1) Query Like Report
2) Formatted Report
3) Grouped query

Enter your option... 2

Product	Price	In Stock
=====	=====	=====
Alice Mutton	39.00	0
Aniseed Syrup	10.00	13
Boston Crab Meat	18.40	123
Camembert Pierrot	34.00	19
Carnarvon Tigers	62.50	42
.....		
Vegie-spread	43.90	24
Wimmers gute Semmelknodel	33.25	22
Zaanse koeken	9.50	36

Start time: 09:43:44:20

End time : 09:43:45:50

78 records reported

:

Elapsed Time
1.3 seconds

GUI Innovations SqlLink3000 - Complex Query

■ The SQL select statement is:-

```
SELECT Customers.Company_Name, Orders.Required_Date,
Sum(Order_Details.Unit_Price * Order_Details.Quantity)
AS Order_Value, Count(Order_Details.Product_Id)
AS CountOfProduct_Id
FROM (Customers INNER JOIN Orders ON Customers.Customer_Id =
Orders.Customer_Id)
INNER JOIN Order_Details ON Orders.Order_Id = Order_Details.Order_Id
GROUP BY Customers.Company_Name, Orders.Required_Date
ORDER BY Orders.Required_Date DESC
```

GUI Innovations SqlLink3000 – Complex Query

■ The results are:-

Company: Vins et alcools Chevalier
Date: 01/09/1994
Total Value: 440
No Of Orders: 3

Company: Hanari Carnes
Date: 24/08/1994
Total Value: 1444.8
No Of Orders: 3

Elapsed Time
14.6 seconds

Start time: 09:49:44:50
End time : 09:49:59:10

823 records reported
:

GUI Innovations SqlLink3000 – Complex Query

- Select from 3 linked tables
- Summarise, group and sort the results
- Display to the screen
- 823 records output to screen
- Time taken – 14.6 seconds

GUI Innovations SqlLink3000 – Requirements

- SqlLink3000 uses Microsoft Active Data Objects (ADO).
- Runs on a 'windows' system to connect to the database (Preferably NT, 2000 or XP).
- Connects to any SQL database for which you have ADO drivers.
- Implemented on the HPe3000 as a set of routines in an XL

GUI Innovations SqlLink3000 - Features

- Full read/write access to your SQL databases.
- Read from 'views'
- Execute stored procedures
- Simple to use
- Fast and efficient!

GUI Innovations SqlLink3000 – Tell me more!!

- Please contact us at <http://www.gui3000.com> for a fully featured evaluation copy.
- Includes the XL, sample COBOL program and sample MS Access database (migrated from Image using GUI3000/ix)