



# *AMXW*

Migration Made Easy  
from e3000 to Unix, Linux & Windows

Leo McCloskey

Neartek

3/28/03

# *Why Are We Here?*



- Support for the HP 3000 product line ends in 2006
  - HP estimates 60,000 customers/end user machines worldwide need a solution
- You're looking for an fast, easy, safe, economic, proven and logical solution
- Neartek has an automated migration solution

# *Options for e3000 Community*



- Homestead
- Rewrite code
- Purchase a package
- Manual Migration
- Automatic Migration

# *What Are The Issues?*



- Critical Data
- Time
- Resources
- Training
- Money

# *What Are The Risks?*



- Data loss
- Loss of functionality
- Business interruption
- Paying for off-the-shelf software that doesn't fit
- Spending dollars without getting results
- IT staff turnover

# *Neartek's Solution*



## Automated Migration to Unix, Windows or Linux

- AMXW is a 3GL software tool
- Automates the migration of HP e3000 environments to open platforms
- Supports numerous relational databases

# Why AMXW?



- Ease of use
  - Automates migration by 98%
  - Execute on a Windows system and then transfer the migrated code to the target environment
  - Uses MPE manpower - migrated environment is easy to maintain
- Fast
  - Port ALL environments in a matter of a few weeks
- Safe
  - In a matter of days you have visibility of the project and programs can function.
  - 1:1 automatic migration -- no surprises
  - Code migration to native UNIX -- NOT emulated

# Why AMXW?



- Cost savings
  - Migrate code with 2 engineers in 1 month
  - Test for 2-3 months (according to application)
- Proven
  - 360+ customers installed worldwide
  - In use by all major European ISVs
- Versatile
  - Supports various target computers
  - Supports most databases



# *Migrating with AMXW*



- Total migration
  - Programs, files, data, JCLs
- Automatic conversion
- Minimal testing time
- Resources
  - AMXW software license
  - 2 engineers for 4 months
- Migrated code
  - UNIX native format
  - Less than 5% changes
  - Easy to maintain
  - Database independent.
- Peace of Mind
  - 360+ customer installations
  - 12 years experience

# AMXW Migration Environments



## ■ Applications

<b>Databases:</b>	IMAGE/TURBOIMAGE, ALLBASE
<b>Files:</b>	SEQUENTIALS, MESSAGE, KSAM, SPOOL, CIRCULAR
<b>Programs:</b>	COBOL, FORTRAN*, SPL, C, PASCAL*
<b>Screens:</b>	VPLUS**
<b>System calls:</b>	Intrinsics
<b>JCL:</b>	COMMANDS, UDCs, COMMAND FILES, JOBS
<b>Utilities:</b>	SORT/MERGE, FCOPY, KSAMUTIL, QUERY**

\* *HP-UX*

\*\* *3<sup>rd</sup>-party tool*

- Translates source code automatically
- Migrates environment to target platform
- Converts to native code

# *Environments Supported*



- Target Environments
  - All UNIX, including HP-UX, IBM AIX, Sun Solaris
  - Linux RedHat
  - Windows 2000



# Databases Supported



## Multi-Target Databases

- ORACLE



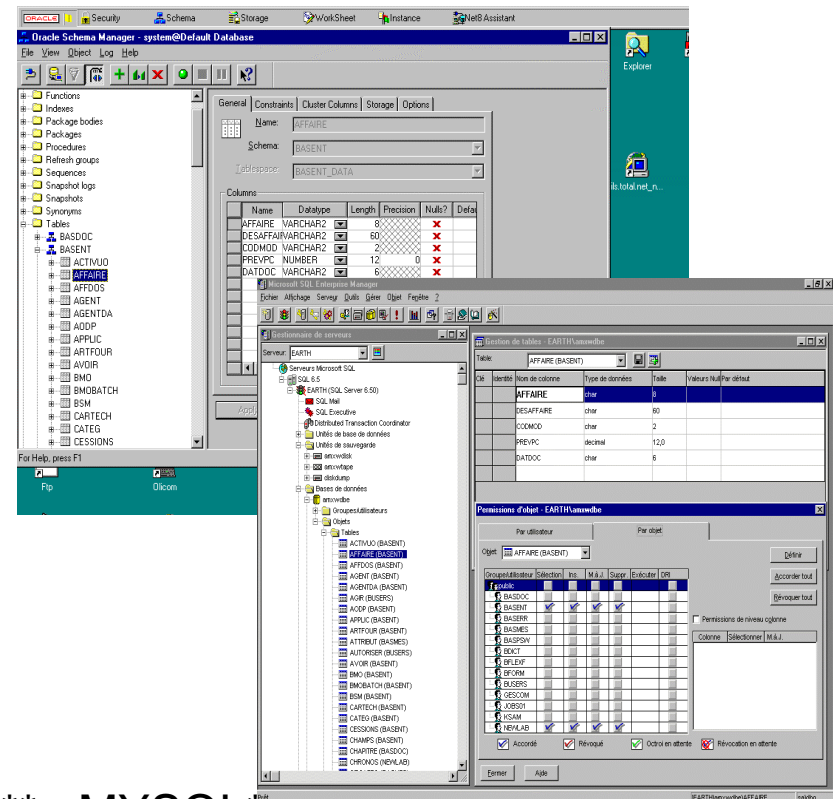
- HP ELOQUENCE



- MICROSOFT SQL SERVER

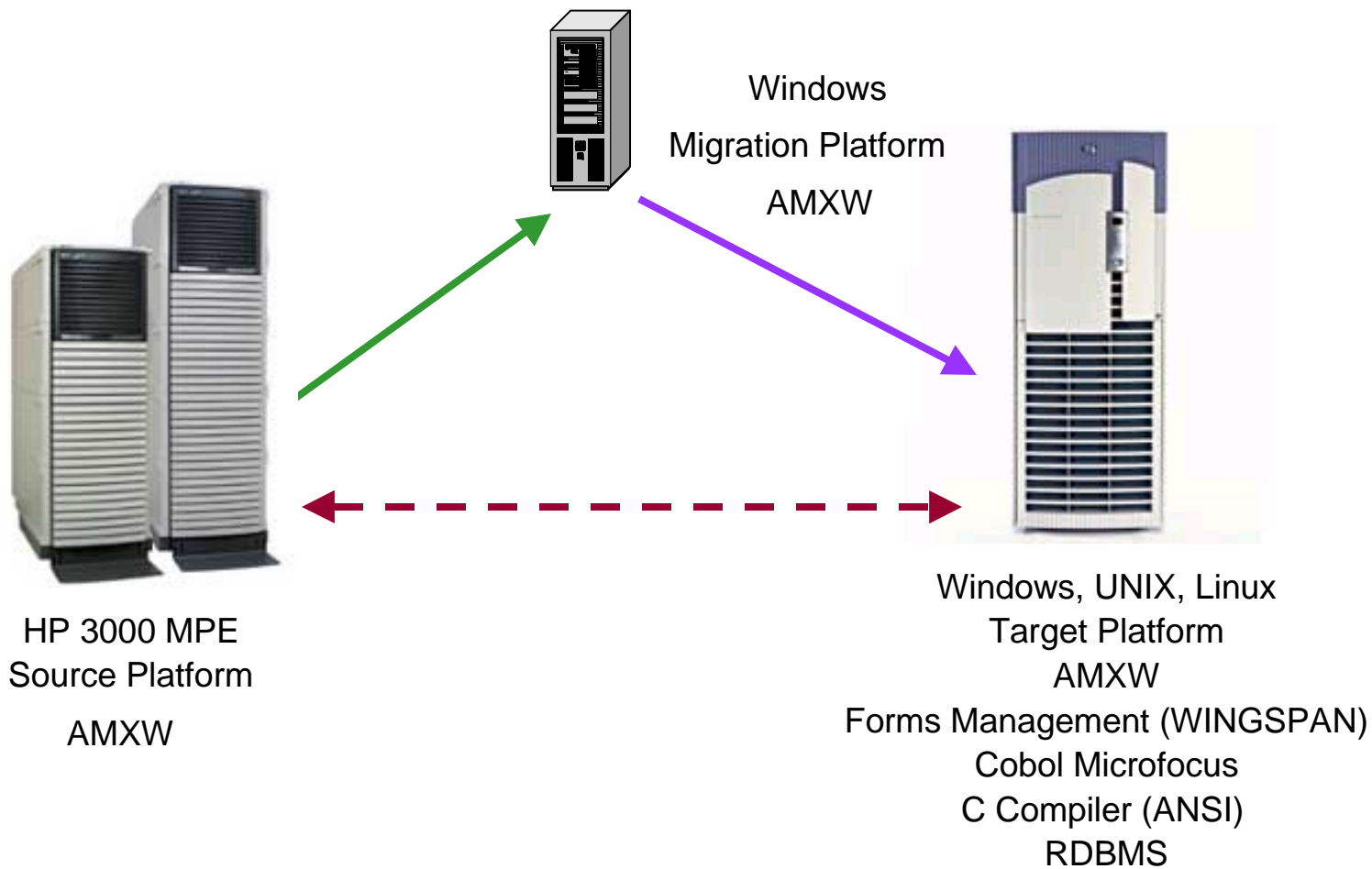


- INFORMIX, INGRES, SYBASE, DB2\*\*, MYSQL\*\*



\*\* 3<sup>rd</sup>-party tool  
neartek.com

# AMXW Process



# AMXW Compiler Options

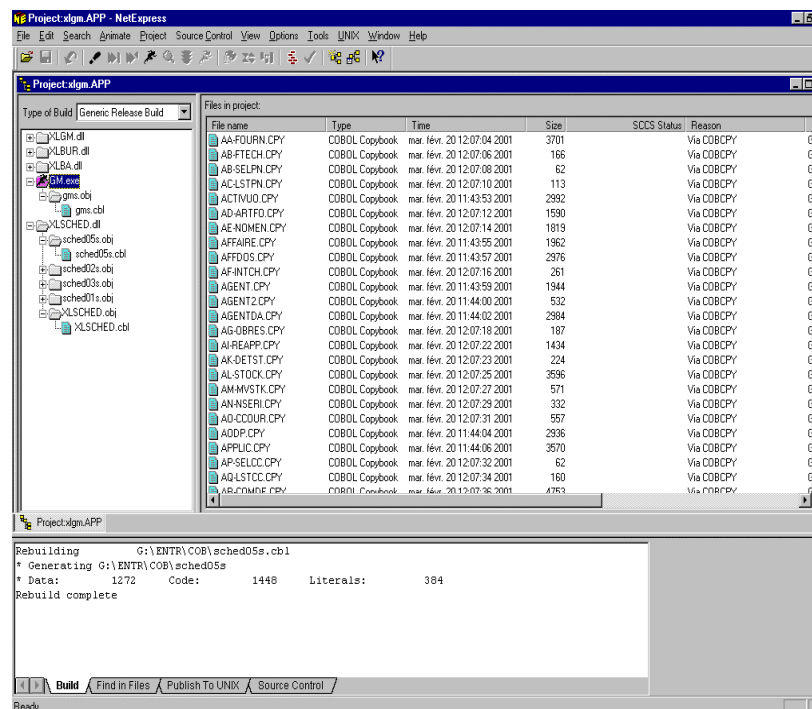


- A recognized multi-computer compiler
  - MICROFOCUS COBOL\*
  - MICROFOCUS NETEXPRESS\*\*



\* All Unix/Linux computers

\*\*Windows NT



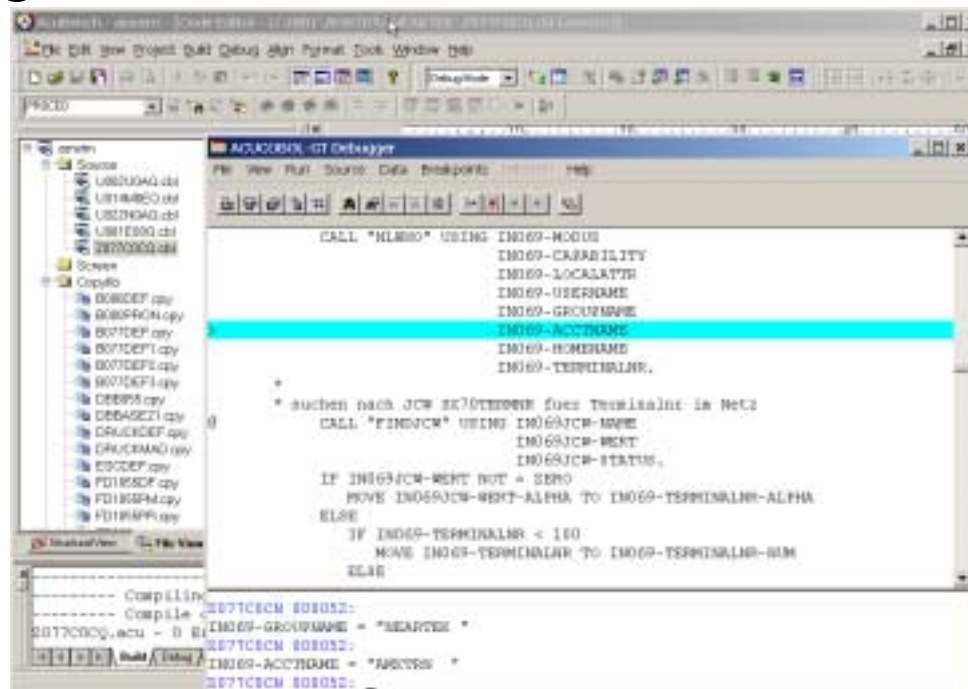
# AMXW Compiler Options



- Currently interfacing with

- ACU COBOL\*
- ACU BENCH\*\*

**ACUCORP™**



\* All Unix/Linux computers

\*\*Windows NT



# AMXW Simplicity



- Developed most commonly used intrinsics (system calls)\*
  - **IMAGE** (*Dbbegin, Dbclose, Dbdelete, Dbend, Dberror, Dbexplain, Dbfind, Dbget, Dbinfo, Dblock, Dbopen, Dbput, Dbunlock, Dbupdate, Dbxbegin,...*)
  - **KSAM** (*Ckclose, Ckdelete, Ckerror, Cklock, Ckopen, Ckopenshr, Ckread, Ckreadbykey, Ckrewrite, Ckstart, Ckunlock, Ckwrite,...*)
  - **FILES** (*Fcheck, Fclose, Fcontrol, Fdelete, Ferrmsg, Ffileinfo, Fgetinfo, Flock, Fopen, Fpoint, Fread, Freadbackward, Freaddir, Freadlabel, Freadseek, Frename, Fsetmode, Fspace, Funlock, Fupdate, Fwrite, Fwritedir, Fwritelabel, Genmessage, Iodontwait, Iowait, Print, Printfileinfo, Read, Readx,...*)
  - **PROCESS** (*Activate, Create, Createprocess, Father, Getprocid, Getprocinfo, Kill, Quit, Suspend, Terminate,...*)
  - **COMMANDS** (*Command, Hpcicommand, Mycommand,...*)

NON EXHAUSIVE LIST\*

# AMXW Simplicity



- Developed Command Interpreter (CI) commands using most common parameters
  - **FILES** (*Build, File, Listf, Listftemp, Purge, Rename, Reset, Save,...*)
  - **PROCESS** (*Run,...*)
  - **BATCH/SESSIONS** (*Stream, Job, Showjob,...*)
  - **ENVIRONMENT** (*Input, Setjcw, Setvar, Listf, Listftemp, Purge, Rename, Reset, Save, Showjcw, HP variables and JCWs,...*)
  - **CI / UDCS** (*MPE and target OS CommandFiles, Continue, Else, Endif, Eod, Eoj, Help, If, Recall, Reply, Showcatalog, Tellop,...*)
  - **OTHERS** (*Comment, Listacct, Listgroup,...*)

# AMXW Advantages



- **Transparency**
  - JCLs work transparently on target computers
  - Commands interpreted with a special shell named 'nlsh'
  - The 'nlsh' shell is able to execute native commands from HP3000,
  - Executes Commands on the target OS (including command files)
- **Usability**
  - The print commands have a 'user exit' -- possible to call a shell script from the print command (you can write the file to a CD-ROM, to send it via email, printing it, etc.)
  - With UNIX or Linux, every command from these OS are native
- **Versatility**
  - Neartek can develop any new command or option that is not currently ported

# *AMXW Advantages*



- Perform the migration on-site
  - You can do it yourself
  - Consultants can do it for you
- No code leaves the site
- Fast – up to 1,000,000 lines of code/day can be migrated
- Maintain existing skill sets while learning new ones
- Lower cost solution

# *AMXW Vendors*



- HP
- LUND Performance Solutions
- Managed Business Solutions
- M. B. Foster
- Speedware

# *Neartek Profile*



- Founded in 1991
- 60+ employees
- \$27M in series C funding led by Benchmark Capital
- 360+ AMXW customers
- 12 years of continuous product development & enhancements

# Contact Information



- Leo McCloskey – North American Manager AMXW
  - Office: 508-923-2826
  - Cell: 508-208-9528
  - Email: [Leo.McCloskey@neartek.com](mailto:Leo.McCloskey@neartek.com)

# AMXW Success



## References

### ■ ISVs (software editors)

- ARES, CIRIL, DATASTREAM, EDS-GFI, IMPULSION, ORDAT, RCS, TJ-SYSTEMS, UNILOG, eBOOTIS (March 2002), CORTIS-LENTINI (May 2002)

### ■ Companies that migrated their own sources:

- PITNEY BOWES, TEFAL, IMSS, EXPEDITORS

### ■ Customers using AMXW

- ALEXANDER BINZEL GMBH, AUTOPRATIC, BRODARD GRAPHIQUES, BROSE, BUZIL, BVA, CGEP, CHAPELLE DARBLAY, COHLINE, DALIM, DETIA, DHW, DOLE, DUNLOP, EHLEBRACHT, EMIG GMBH & Co, EOSA, FRANCELOG, GTI, HELIO-CORBEIL, HAL, HELLA, HETTICH, HUTTENES ALBERTUS GmbH, ICI, IMV, INOTECH, INOPLAST, KRUPP AUTOMOTIVE SYSTEMS GMBH, LA ROCHETTE-VENIZEL, LEMM, LUXOPLAST, MONTAVIT, NASCO, OTOR, PAD, PIAZZA, QUATP, RADSYSTEM GMBH, SACRED, SAS, SAXONIA, SCHI, SEB, SECURIT ST GOBAIN, SOPELEM, TJ SYSTEMS, VALOUREK, VAMAV, VENTREX, WALTER MADER AG, WERKSTOFF, WOESTE, ZALTECH, ZEIT,...





# *AMXW Demo*



*Thank you*

[neartek.com](http://neartek.com)