

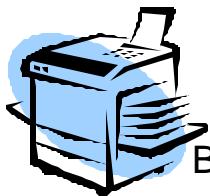
Migration Made Easy(ier)

COBOL, IMAGE, KSAM, VPLUS

A presentation by:

Jeanette Nutsford Computometric Systems
jeanette@netcomuk.co.uk

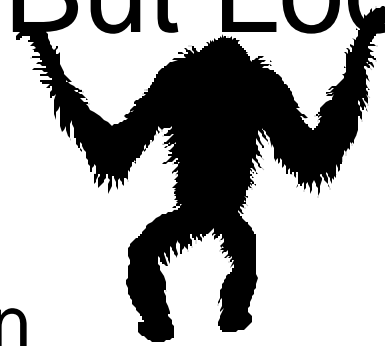
Alan Yeo ScreenJet
alanyeo@screenjet.com



Best Version obtained by Selecting Pure Black & White or Color



Every Which Way But Loose!



- Low Risk Strategy
- Homestead and Migration
- No Upfront Target Platform/OS Decision
- Tools based
- Use existing Skill's
- Gentle Transition not Big Bang
- Modern Look and Feel Applications

Agenda

COBOL, IMAGE, VPLUS, KSAM application

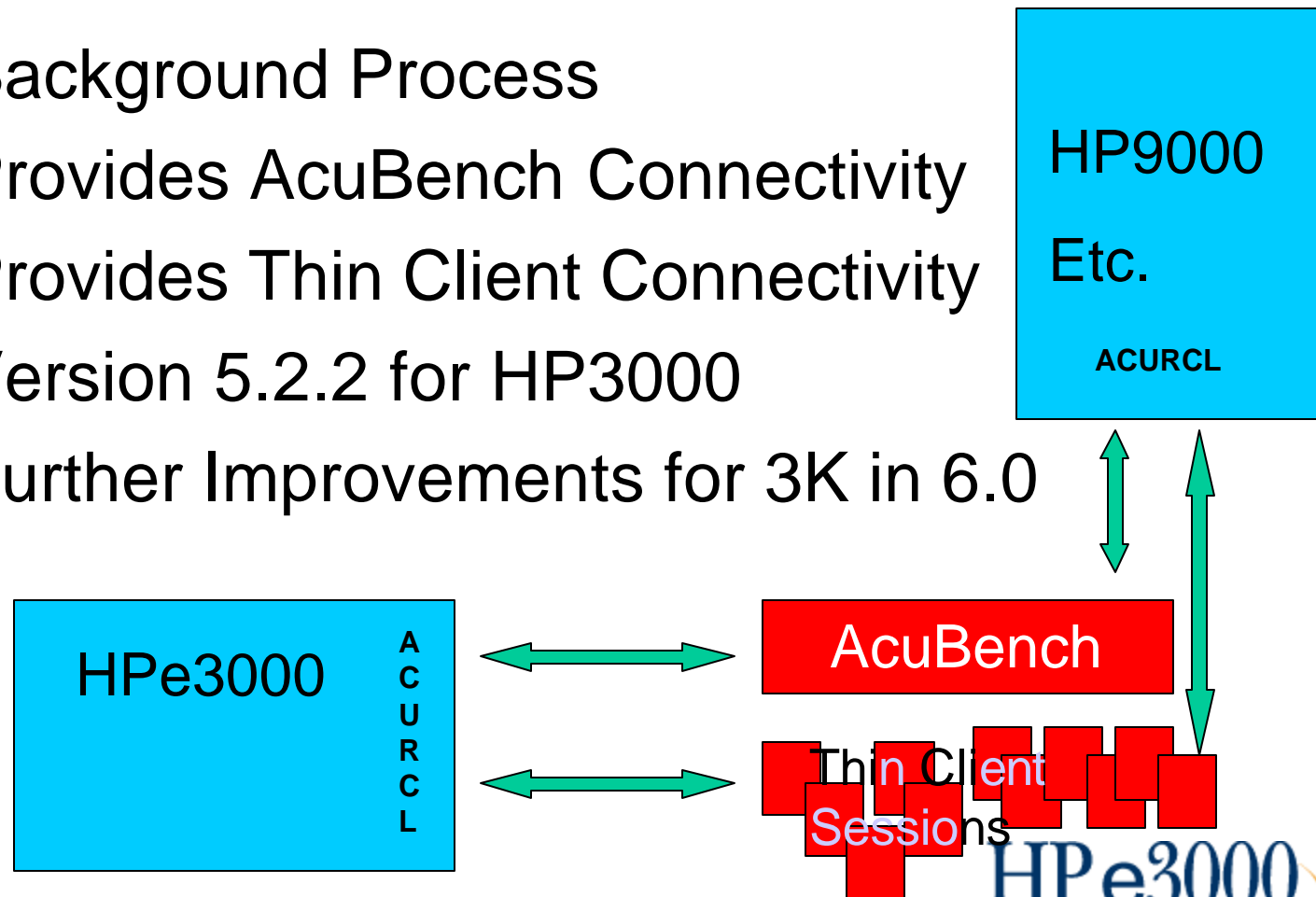
- Run HP3000 versions
- Export programs into AcuBench™
- Compile ACUCOBOL™-GT programs to HP3000
- Run ACUCOBOL versions on HP3000
- ScreenJet™ VPLUS Forms Conversion
- Run GUI versions on HP3000 using Thin Client
- Migrate replacing KSAM with VISION™
- Migrate replacing IMAGE with Eloquence™

CAsE sensITiVItY *Ouch!*

- MPE **T**
- POSIX **R**
- Windows **T?R**
- Get used to it!

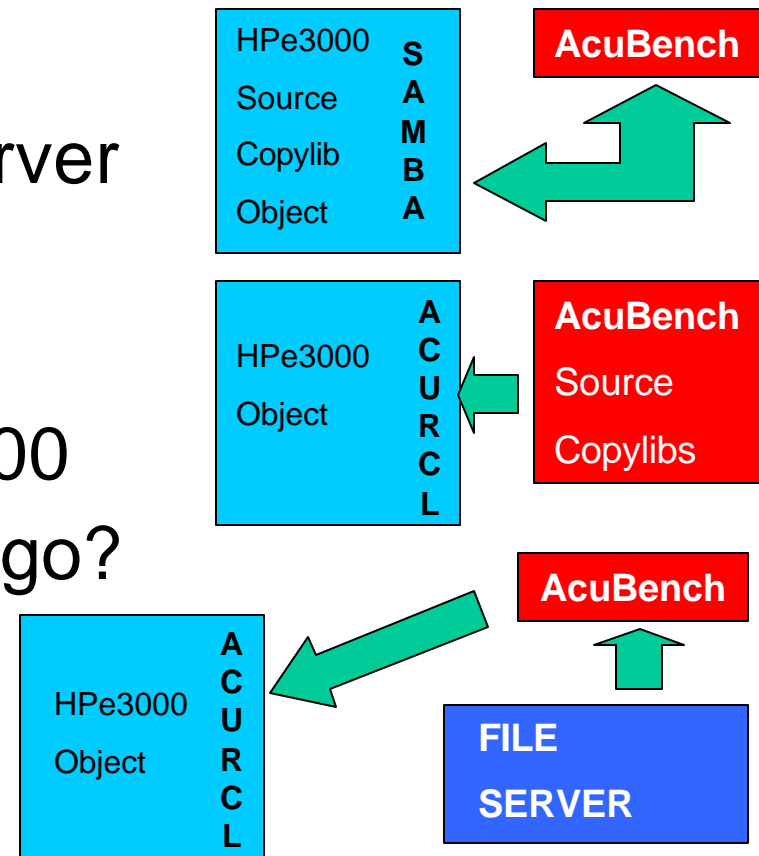
Acucorp ACULAUNCH daemon

- Background Process
- Provides AcuBench Connectivity
- Provides Thin Client Connectivity
- Version 5.2.2 for HP3000
- Further Improvements for 3K in 6.0



Transferring, Managing Files

- Many possible ways
- Use HP3000 as file server
- SAMBA
- Use other File Server
- Executable's on HP3000
- Where do you want to go?
- Simple FTP for demo



HP3000 KSAM VERSION

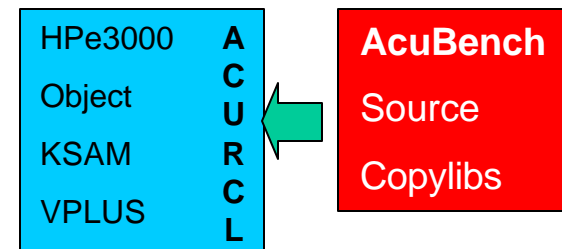
- HP3000 COBOL Source
 - MACROS
- KSAM Copylib compiled EDTCT files
 - DATA and VPLUS subroutines
- NM KSAM data file
- VPLUS screens
 - FUNCTION KEYS and PROCESSING SPECS

Moving KSAM Source

- For other platforms Bytestream files
 - POSIX SHELL COMMANDS
 - TOBYTE, FROM BYTE
 - ADD FILE TYPE EXTENSIONS
 - HFS FILE SPACE
- COPYLIB to Copy Books
 - LIBUTIL, ACUCORP SUPPLIED UTILITY
 - EXTRACTS FROM KSAM COPYLIB OR FLAT FILES
 - GENERATES INDIVIDUAL BYTESTREAM COPYBOOKS

KSAM version in AcuBench

- Create a Project
- Transfer files from HP3000
- Set Remote Server Settings
- Set HP3000 COBOL Options
- Add files into Project
- Compile back to HP3000
- Run ACUCOBOL, VPLUS, KSAM

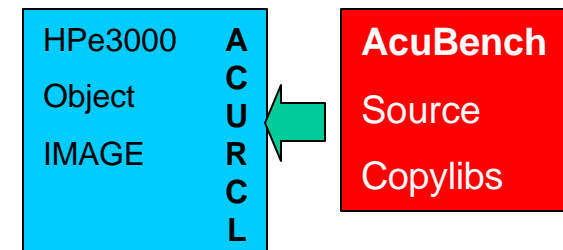


Moving IMAGE Source

- For other platforms Bytestream files
 - POSIX SHELL COMMANDS
 - TOBYTE, FROM BYTE
 - ADD FILE TYPE EXTENSIONS
 - HFS FILE SPACE
- COPYLIB to Copy Books
 - LIBUTIL, ACUCORP SUPPLIED UTILITY
 - EXTRACTS FROM KSAM COPYLIB OR FLAT FILES
 - GENERATES INDIVIDUAL BYTESTREAM COPYBOOKS

IMAGE version in AcuBench

- Create a Project
- Transfer files
- Set Remote Server Settings
- Set HP3000 COBOL Options
- Add files into Project



Converting the VPLUS Forms

- **ScreenJet Extract to database**
 - ALL or INDIVIDUAL FORMS
 - SCREEN LAYOUT, FIELD TYPES, PROCESSING SPECS, SAVE FIELDS etc
- **ScreenJet Generate**
 - CREATES AcuBench Program Structure Files
 - One for Global Form File Information
 - One for each Screen
 - CREATES Screen Copy Books
 - One for Global Form
 - One for each Screen
- **Transfer files to AcuBench**

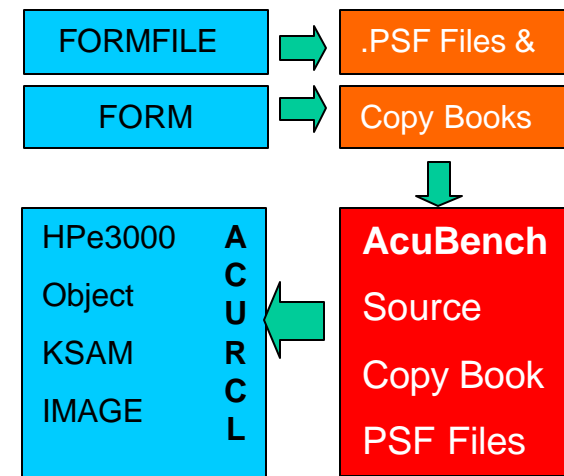
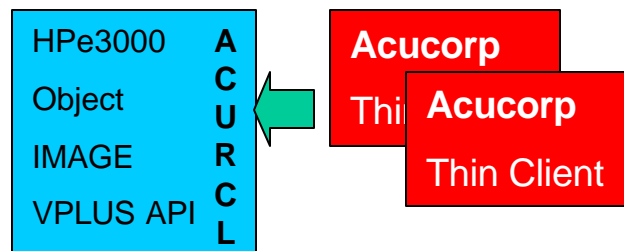


IMAGE Thin Client GUI version

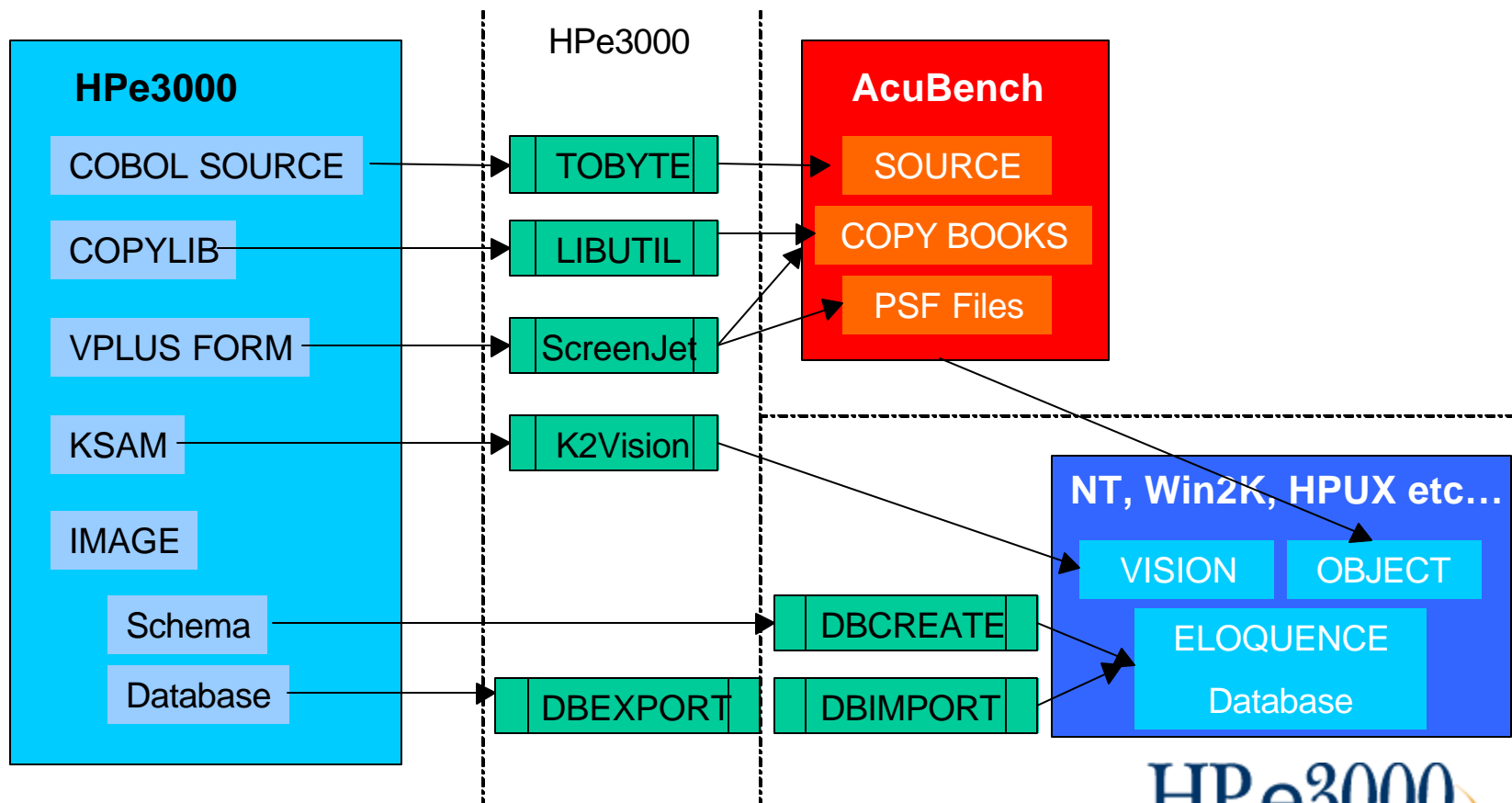
- Transfer and Add .psf files into Project
- Generate COBOL source from .psf files
- GUI Screen Design Tool
- Include pointer to ScreenJet VPLUS API
- Compile back to HP3000
- Create Thin Client Alias on HP3000
- Run ACUCOBOL, IMAGE, GUI with API



Migrating from the HP3000 ☹️

- So far used HP3000 as application Server
- Converted from HP COBOLII to ACUCOBOL
- Converted from VPLUS to GUI
- Moved to an Integrated Development Toolset
- Now Compile to another Platform, OS
- Transfer the data sources
- Execute on a different Platform, OS

Migration Components & Processes



Migrating KSAM version

- VISION File system similar to KSAM
- Multiple platform Support (including 3K)
- Modify Project for new platform settings
- Compile to new platform
 - Keeping HPCOBOL Compatibility settings
- Transfer KSAM data to Vision “K2Vision”
- Run Application on New Platform

TurboIMAGE to Eloquence

- Eloquence, Multi-Platform support
- Conversion Considerations (all solutions)
 - BIG ENDIEN, little endien & Host Character sets
- Installing Eloquence on a Server
- Extracting the IMAGE Schema and Data
- Creating the Eloquence Database
- Loading the data
- Compiling, Executing the Eloquence Version

Which Way? Your Choice

Hopefully we have been able to demonstrate to you, that the barriers to converting COBOL, IMAGE, VPLUS, KSAM are not that great. Have we solved all the problems you will have? NO.

Demonstrated some of the Tools available to simplify the task and reduce risk

Hopefully empowered you to assess and manage a conversion strategy either for Homesteading or Migration. Utilising many of the skills and resources you already have.

If you would like help in setting up evaluation projects, we have been working with Independent HP3000 consultants, who can provide 2 day on-site training courses.

Demo Support Provided by:



www.acucorp.com



www.hp-eloquence.com



www.screenjet.com

Jeanette Nuttsford

jeanette@netcomuk.co.uk

Alan Yeo

alanyeo@screenjet.com

The logo for the HP e3000 Solutions Symposium features the text "HP e3000" in a large, blue, serif font, with "SOLUTIONS SYMPOSIUM" in a smaller, blue, sans-serif font below it. The text is set against a white background with a blue and orange swoosh graphic underneath.

HP e3000
SOLUTIONS SYMPOSIUM