



AMXW

Migration Made Easy
from e3000 to Unix, Linux & Windows

Leo McCloskey

Neartek

3/28/03

Why Are We Here?



- Support for the HP 3000 product line ends in 2006
 - HP estimates 60,000 customers/end user machines worldwide need a solution
- You're looking for an fast, easy, safe, economic, proven and logical solution
- Neartek has an automated migration solution

Options for e3000 Community



- Homestead
- Rewrite code
- Purchase a package
- Manual Migration
- Automatic Migration

What Are The Issues?



- Critical Data
- Time
- Resources
- Training
- Money

What Are The Risks?



- Data loss
- Loss of functionality
- Business interruption
- Paying for off-the-shelf software that doesn't fit
- Spending dollars without getting results
- IT staff turnover

Neartek's Solution



Automated Migration to Unix, Windows or Linux

- AMXW is a 3GL software tool
- Automates the migration of HP e3000 environments to open platforms
- Supports numerous relational databases

Why AMXW?



- Ease of use
 - Automates migration by 98%
 - Execute on a Windows system and then transfer the migrated code to the target environment
 - Uses MPE manpower - migrated environment is easy to maintain
- Fast
 - Port ALL environments in a matter of a few weeks
- Safe
 - In a matter of days you have visibility of the project and programs can function.
 - 1:1 automatic migration -- no surprises
 - Code migration to native UNIX -- NOT emulated

Why AMXW?



- Cost savings
 - Migrate code with 2 engineers in 1 month
 - Test for 2-3 months (according to application)
- Proven
 - 360+ customers installed worldwide
 - In use by all major European ISVs
- Versatile
 - Supports various target computers
 - Supports most databases

Migrating with AMXW



- Total migration
 - Programs, files, data, JCLs
- Automatic conversion
- Minimal testing time
- Resources
 - AMXW software license
 - 2 engineers for 4 months
- Migrated code
 - UNIX native format
 - Less than 5% changes
 - Easy to maintain
 - Database independent.
- Peace of Mind
 - 360+ customer installations
 - 12 years experience

AMXW Migration Environments



■ Applications

Databases:	IMAGE/TURBOIMAGE, ALLBASE
Files:	SEQUENTIALS, MESSAGE, KSAM, SPOOL, CIRCULAR
Programs:	COBOL, FORTRAN*, SPL, C, PASCAL*
Screens:	VPLUS**
System calls:	Intrinsics
JCL:	COMMANDS, UDCs, COMMAND FILES, JOBS
Utilities:	SORT/MERGE, FCOPY, KSAMUTIL, QUERY**

* *HP-UX*

** *3rd-party tool*

- Translates source code automatically
- Migrates environment to target platform
- Converts to native code

Environments Supported



- Target Environments
 - All UNIX, including HP-UX, IBM AIX, Sun Solaris
 - Linux RedHat
 - Windows 2000



Databases Supported



Multi-Target Databases

- ORACLE



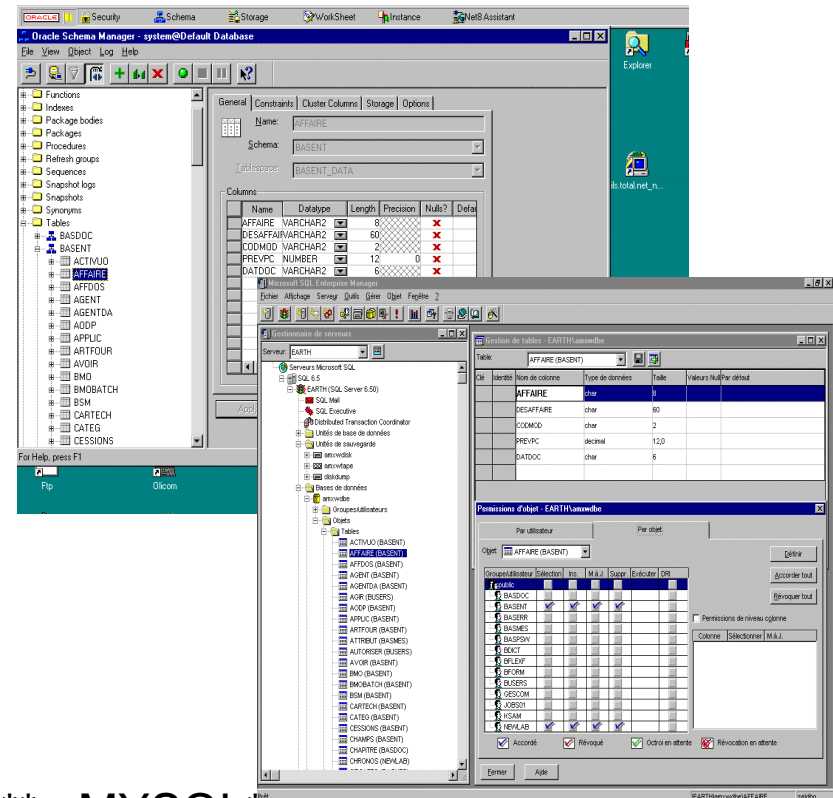
- HP ELOQUENCE



- MICROSOFT SQL SERVER

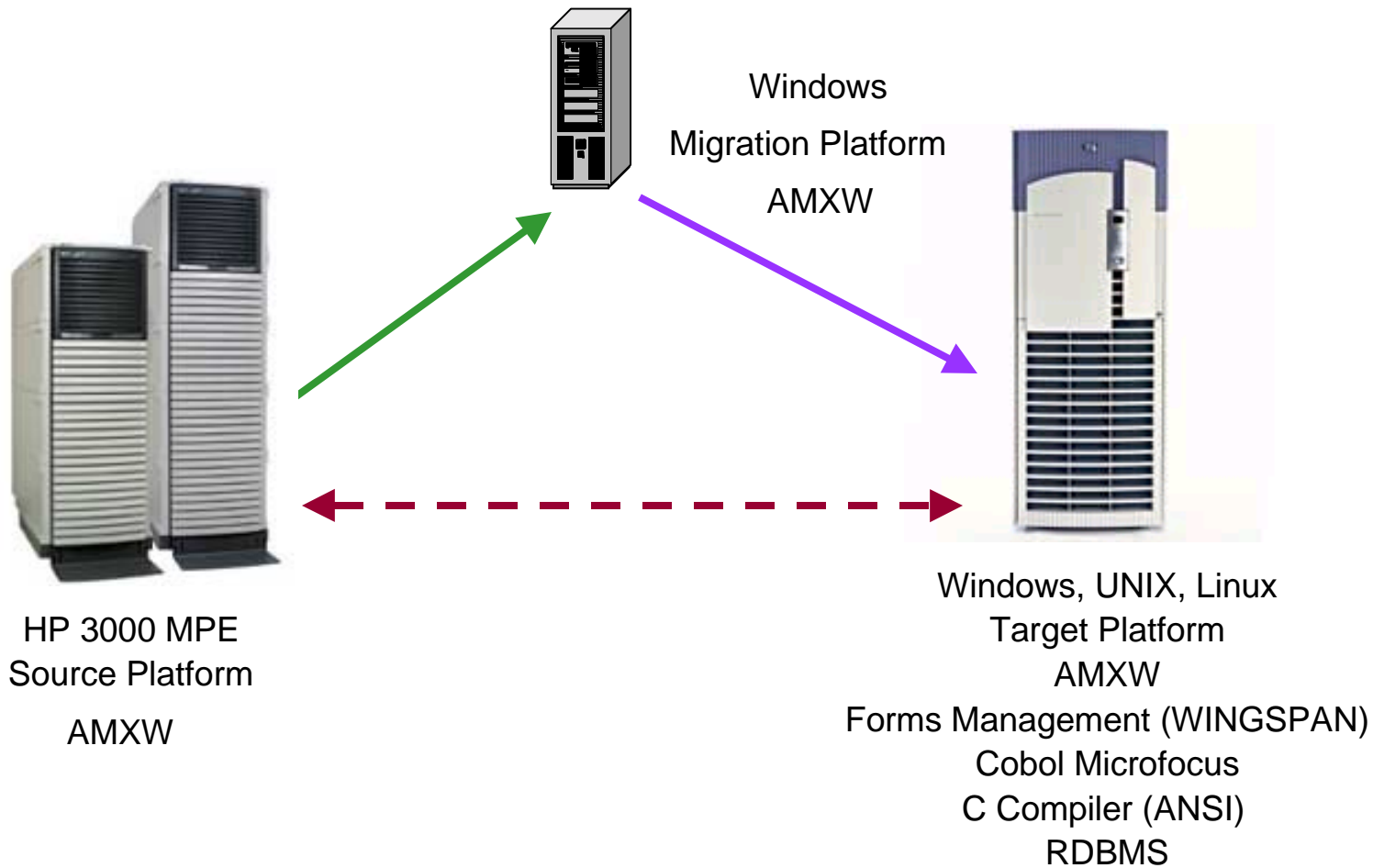


- INFORMIX, INGRES, SYBASE, DB2**, MYSQL**



** 3rd-party tool
neartek.com

AMXW Process



AMXW Compiler Options

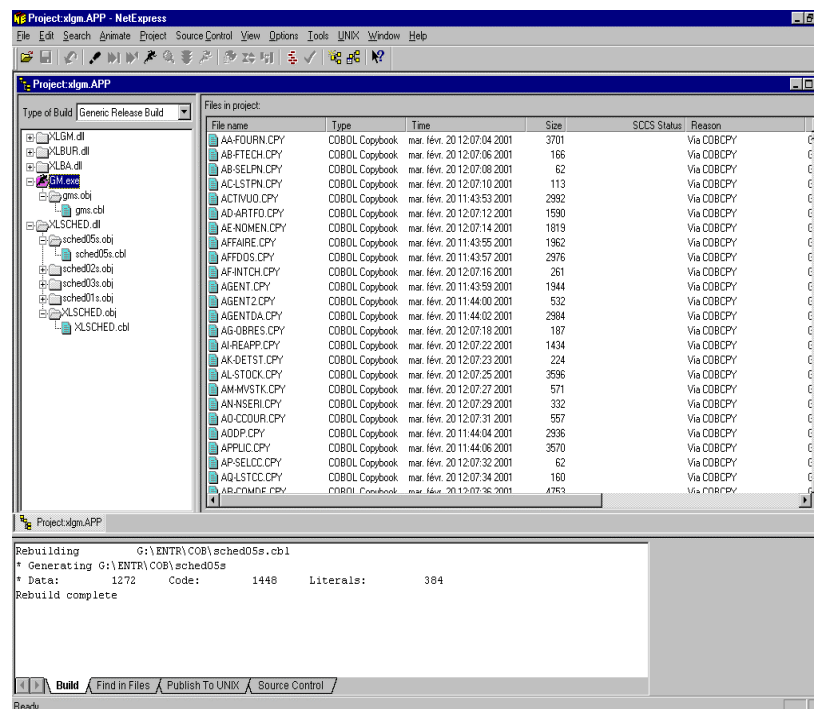


- A recognized multi-computer compiler
 - MICROFOCUS COBOL*
 - MICROFOCUS NETEXPRESS**



* All Unix/Linux computers

**Windows NT



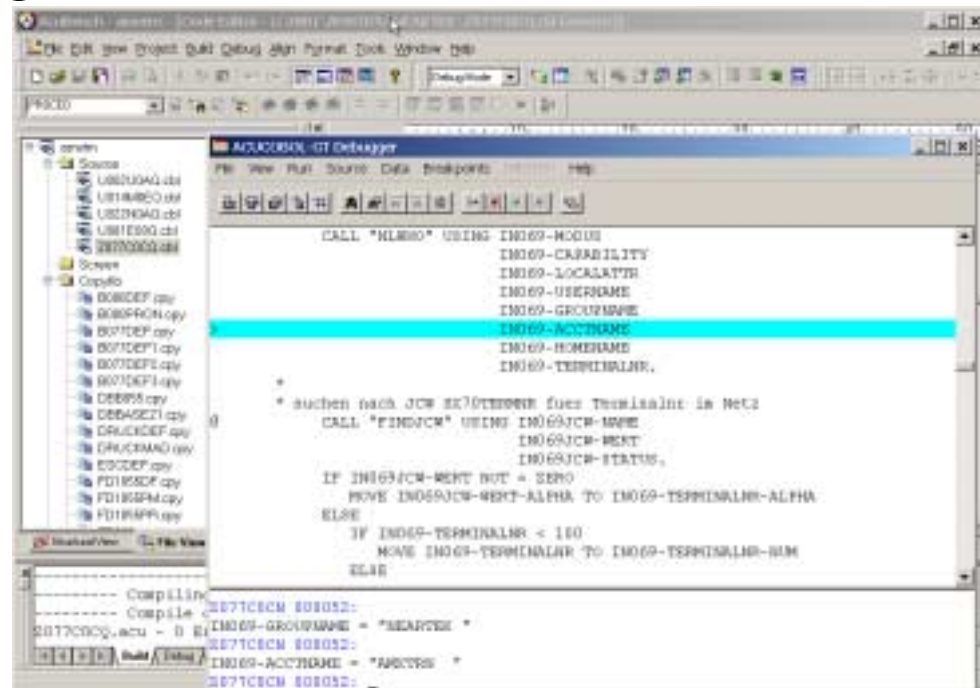
AMXW Compiler Options



- Currently interfacing with

- ACU COBOL*
- ACU BENCH**

ACUCORP™



* All Unix/Linux computers

**Windows NT

AMXW Simplicity



- Developed most commonly used intrinsics (system calls)*
 - **IMAGE** (*Dbbegin, Dbclose, Dbdelete, Dbend, Dberror, Dbexplain, Dbfind, Dbget, Dbinfo, Dblock, Dbopen, Dbput, Dbunlock, Dbupdate, Dbxbegin,...*)
 - **KSAM** (*Ckclose, Ckdelete, Ckerror, Cklock, Ckopen, Ckopenshr, Ckread, Ckreadbykey, Ckrewrite, Ckstart, Ckunlock, Ckwrite,...*)
 - **FILES** (*Fcheck, Fclose, Fcontrol, Fdelete, Ferrmsg, Ffileinfo, Fgetinfo, Flock, Fopen, Fpoint, Fread, Freadbackward, Freaddir, Freadlabel, Freadseek, Frename, Fsetmode, Fspace, Funlock, Fupdate, Fwrite, Fwritedir, Fwritelabel, Genmessage, Iodontwait, Iowait, Print, Printfileinfo, Read, Readx,...*)
 - **PROCESS** (*Activate, Create, Createprocess, Father, Getprocid, Getprocinfo, Kill, Quit, Suspend, Terminate,...*)
 - **COMMANDS** (*Command, Hpcicommand, Mycommand,...*)

NON EXHAUSIVE LIST*

AMXW Simplicity



- Developed Command Interpreter (CI) commands using most common parameters
 - **FILES** (*Build, File, Listf, Listftemp, Purge, Rename, Reset, Save,...*)
 - **PROCESS** (*Run,...*)
 - **BATCH/SESSIONS** (*Stream, Job, Showjob,...*)
 - **ENVIRONMENT** (*Input, Setjcw, Setvar, Listf, Listftemp, Purge, Rename, Reset, Save, Showjcw, HP variables and JCWs,...*)
 - **CI / UDCS** (*MPE and target OS CommandFiles, Continue, Else, Endif, Eod, Eoj, Help, If, Recall, Reply, Showcatalog, Tellop,...*)
 - **OTHERS** (*Comment, Listacct, Listgroup,...*)

AMXW Advantages



- **Transparency**
 - JCLs work transparently on target computers
 - Commands interpreted with a special shell named 'nlsh'
 - The 'nlsh' shell is able to execute native commands from HP3000,
 - Executes Commands on the target OS (including command files)
- **Usability**
 - The print commands have a 'user exit' -- possible to call a shell script from the print command (you can write the file to a CD-ROM, to send it via email, printing it, etc.)
 - With UNIX or Linux, every command from these OS are native
- **Versatility**
 - Neartek can develop any new command or option that is not currently ported

AMXW Advantages



- Perform the migration on-site
 - You can do it yourself
 - Consultants can do it for you
- No code leaves the site
- Fast – up to 1,000,000 lines of code/day can be migrated
- Maintain existing skill sets while learning new ones
- Lower cost solution

AMXW Vendors



- HP
- LUND Performance Solutions
- Managed Business Solutions
- M. B. Foster
- Speedware

Neartek Profile



- Founded in 1991
- 60+ employees
- \$27M in series C funding led by Benchmark Capital
- 360+ AMXW customers
- 12 years of continuous product development & enhancements

Contact Information



- Leo McCloskey – North American Manager AMXW
 - Office: 508-923-2826
 - Cell: 508-208-9528
 - Email: Leo.McCloskey@neartek.com

AMXW Success



References

■ ISVs (software editors)

- ARES, CIRIL, DATASTREAM, EDS-GFI, IMPULSION, ORDAT, RCS, TJ-SYSTEMS, UNILOG, eBOOTIS (March 2002), CORTIS-LENTINI (May 2002)

■ Companies that migrated their own sources:

- PITNEY BOWES, TEFAL, IMSS, EXPEDITORS

■ Customers using AMXW

- ALEXANDER BINZEL GMBH, AUTOPRATIC, BRODARD GRAPHIQUES, BROSE, BUZIL, BVA, CGEP, CHAPELLE DARBLAY, COHLINE, DALIM, DETIA, DHW, DOLE, DUNLOP, EHLEBRACHT, EMIG GMBH & Co, EOSA, FRANCELOG, GTI, HELIO-CORBEIL, HAL, HELLA, HETTICH, HUTTENES ALBERTUS GmbH, ICI, IMV, INOTECH, INOPLAST, KRUPP AUTOMOTIVE SYSTEMS GMBH, LA ROCHETTE-VENIZEL, LEMM, LUXOPLAST, MONTAVIT, NASCO, OTOR, PAD, PIAZZA, QUATP, RADSYSYSTEM GMBH, SACRED, SAS, SAXONIA, SCHI, SEB, SECURIT ST GOBAIN, SOPELEM, TJ SYSTEMS, VALOUREK, VAMAV, VENTREX, WALTER MADER AG, WERKSTOFF, WOESTE, ZALTECH, ZEIT,...



AMXW Demo



Thank you

neartek.com