

Enterprise Needs, Mid-market Wallet

Cathy Fitzgerald

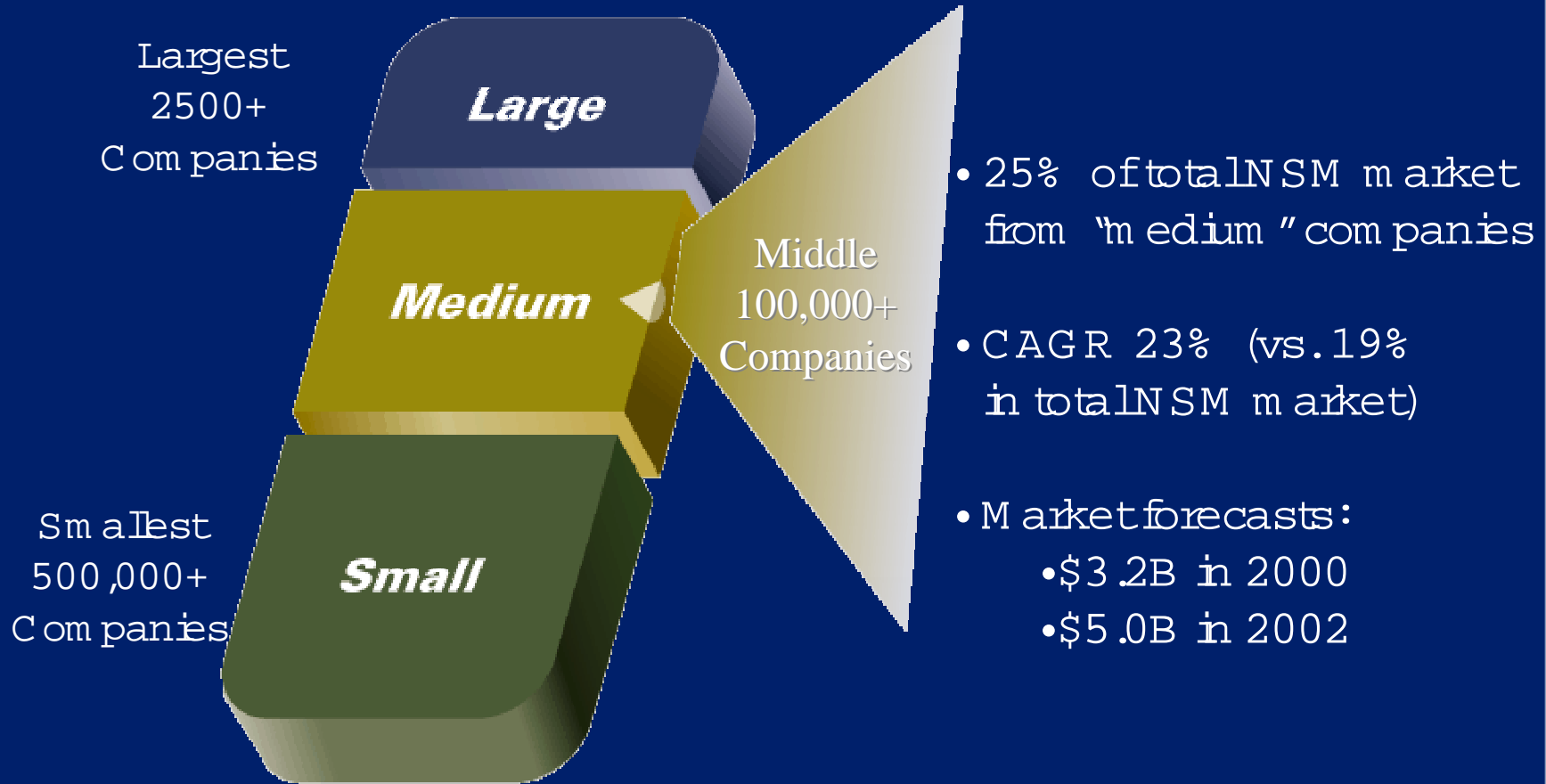
Hewlett-Packard OpenView
Software Business Unit

8000 Foothills BLVD

Roseville, CA 95747

Network & System Mgmt. Market

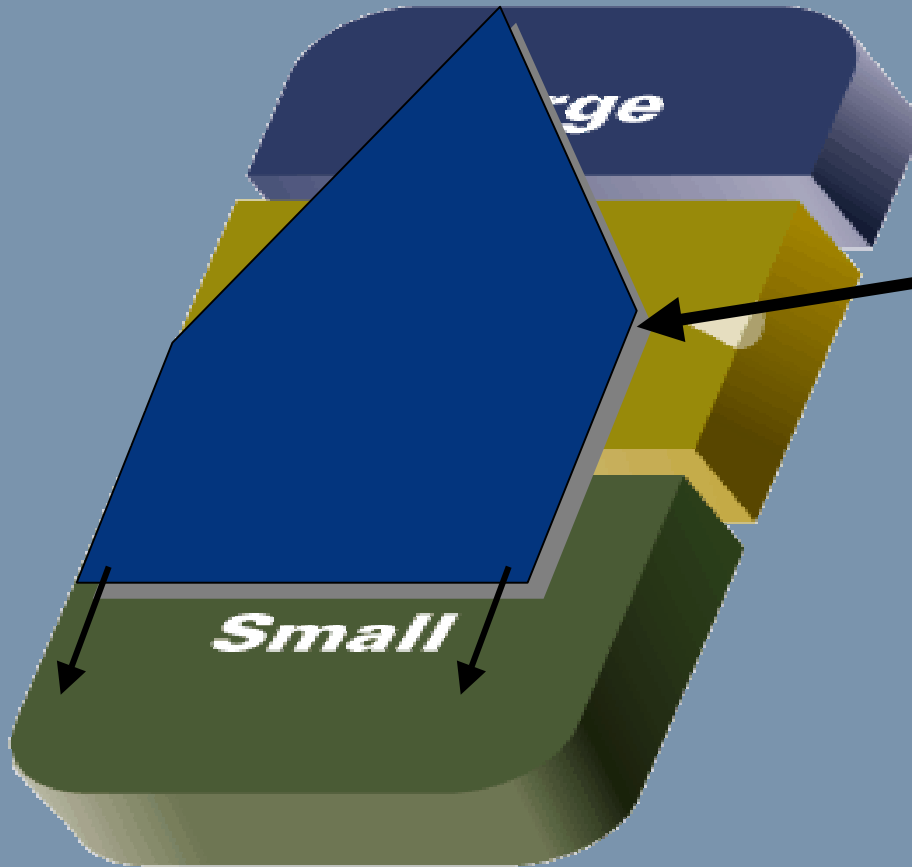
(Source: Dataquest, Forecast Analysis, 7/99)



General Market Trends

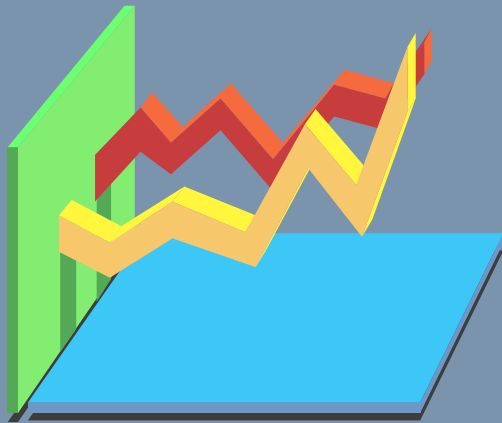
- Windows NT/2000 has penetrated companies of all sizes, from largest to smallest
- Dependency on Windows NT/2000 for business-critical computing increases as size of company decreases
- Availability of specialized IT staff (e.g. Unix, ERP, complex IT management specialists) decreases as the size of company decreases

Operating System Assumptions



General market penetration of Windows NT/2000 as platform for business-critical applications

How is this Market Different?



- **Windows NT/2000 Dominant**
(with some vertical apps on AS400/Solaris/HP-UX/Linux)

- **Health Monitoring Like Self-actualization**

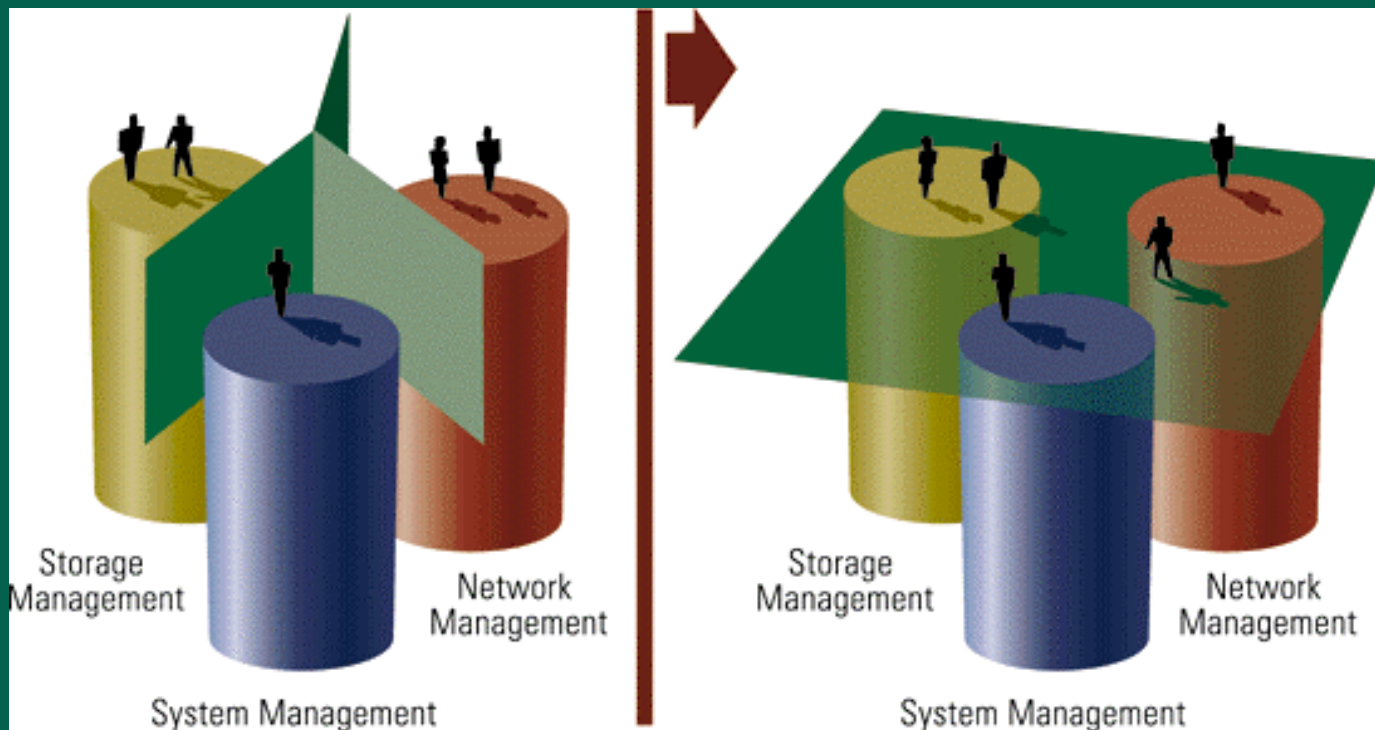
(everyone wants application-level health monitoring, but most are stuck taking care of basic food and shelter with vertical tools for various subsystems)

- **Resource Constrained**

(IT staff lacks the time/ability/budget to deploy sophisticated health-monitoring solutions)

Cross-discipline Management

Mid-market organizations want to move from "silo" management to proactive, cooperative management of their Windows NT/2000 environment.



W hat they really want is ...

hostname - health status

click on alien ships for program navigation

CPU 23%

DISK 87%

memory usage

cpu history

network traffic

Comprehensive IT Management in the Mid-market

- **The customer doesn't care until ...**

Operational health management of Windows NT/2000 becomes a priority the moment the company places business-critical applications on those systems/networks.

- **It better be quick ...**

The lack of specialized IT staff increases a company's desire for quick-time-to-value, operational health management solutions. It's typically a tactical deployment without long training and planning cycles.

- **Match the solution to IT staff skills ...**

Companies dominated by a Windows-knowledgeable staff increasingly demand a Windows-centric operational health management solution.

"A scenario that needs emphasis in a Win2K migration discussion is Win2K and NT 4.0 mixed environment. . . A mixed environment is difficult to support because a troubleshooting scenario can involve several distinct interactions . . ."

Sean Deuby

Windows 2000 Magazine

February 2000

"More and more companies of all sizes are quickly implementing e-business projects utilizing Windows technologies. Web servers are vital to business operations and the corporate images."

Corey Ferengul

Program Director

META Group's Service

Management Strategies

Key Market Drivers

- **Windows 2000 systems being added to existing environments**

Mixed-environment Mgmt.

- **Windows-based business-critical applications extremely prominent**

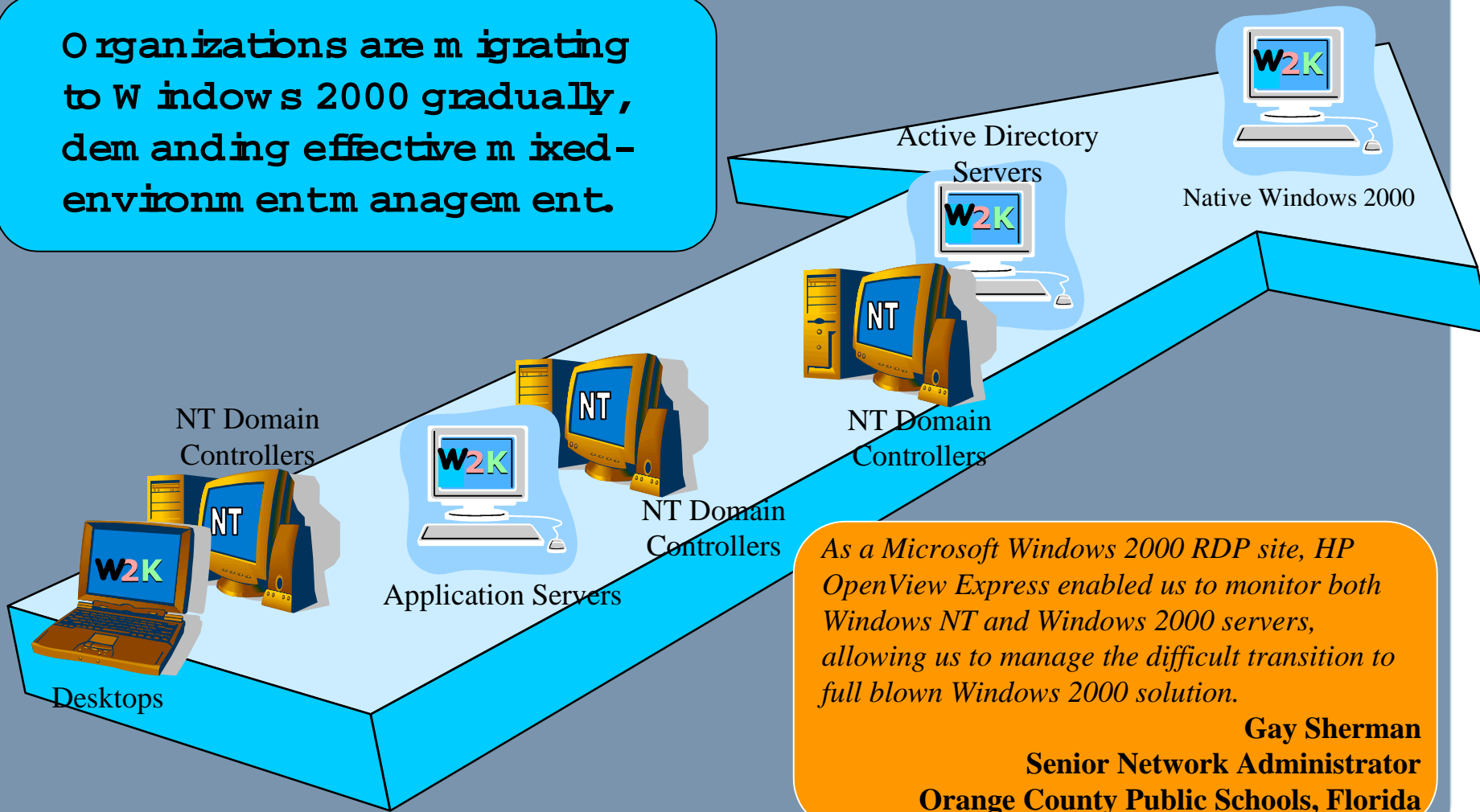
Exchange, SQL, IIS

- **E-business, E-business, E-business**

Effective Web-server Mgmt.

Mixed-environment Management

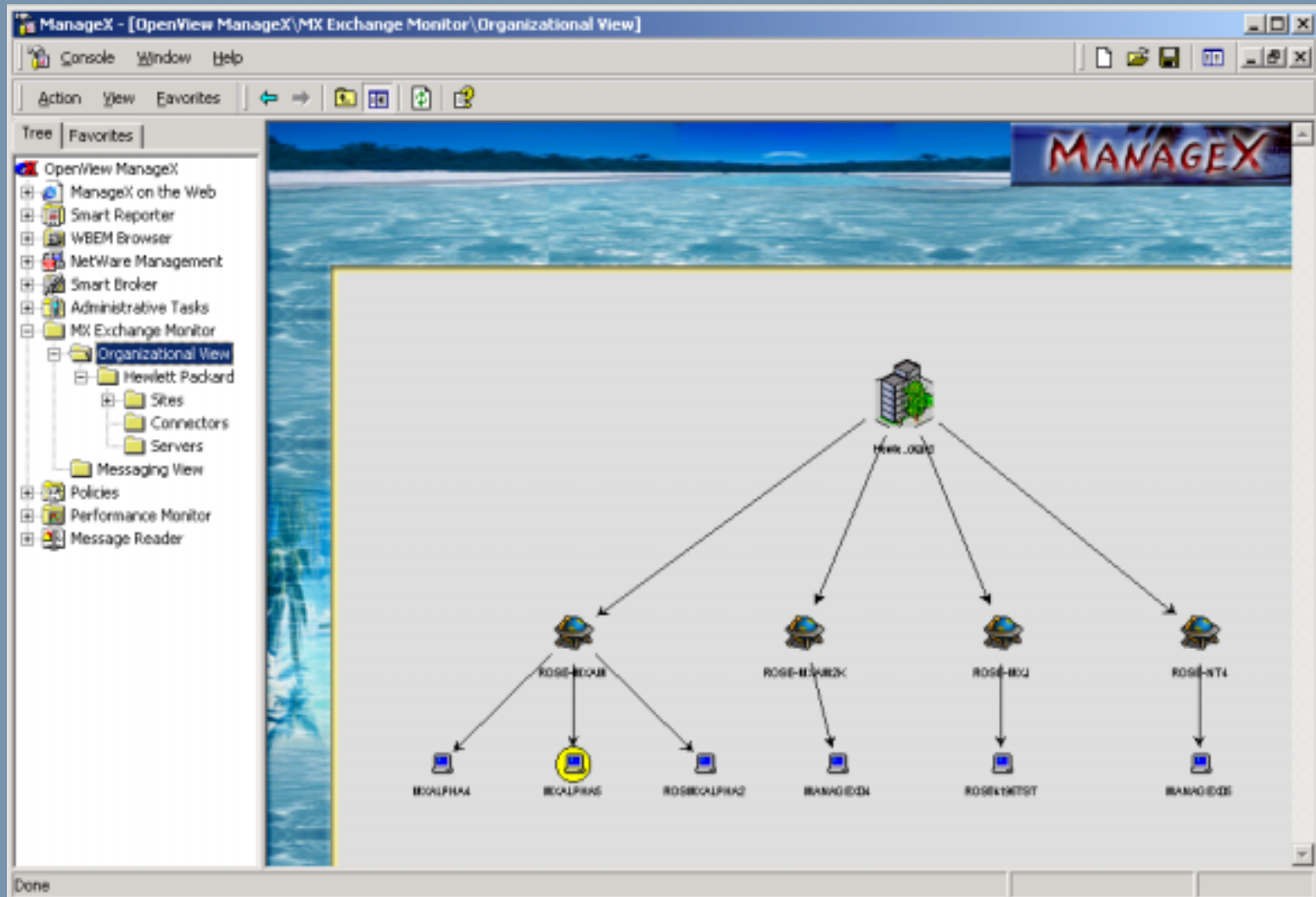
Organizations are migrating to Windows 2000 gradually, demanding effective mixed-environment management.



As a Microsoft Windows 2000 RDP site, HP OpenView Express enabled us to monitor both Windows NT and Windows 2000 servers, allowing us to manage the difficult transition to full blown Windows 2000 solution.

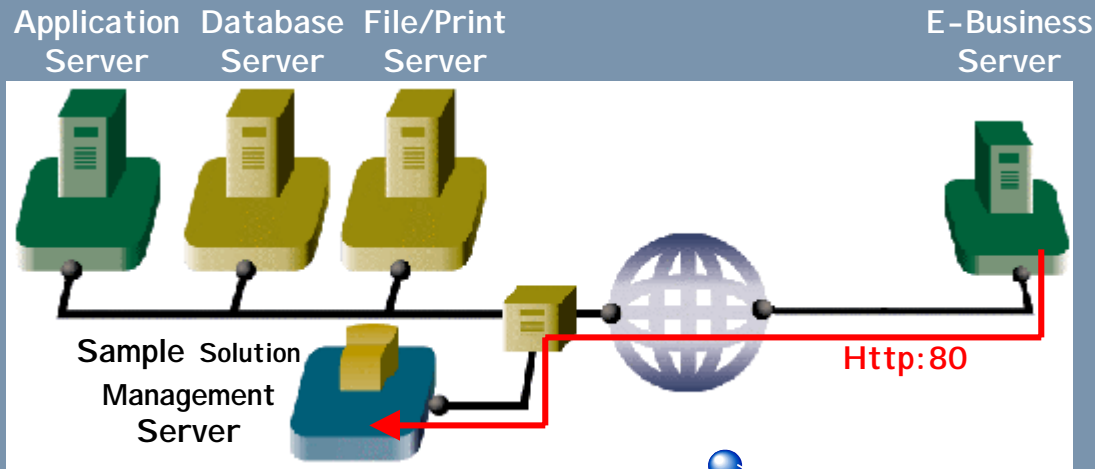
Gay Sherman
Senior Network Administrator
Orange County Public Schools, Florida

Intelligent, (Quick & Easy) Management of Business-critical Applications



Effective Web-server Management

Healthy "E" Requires a Healthy Infrastructure



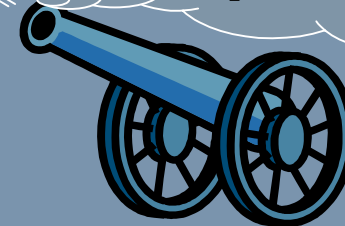
IT challenges:

- E-Business servers are added outside company firewalls
- Separated from NT file/print management servers
- IT does not have immediate view into HW, OS, or E-Business service availability

What to look for in a solution:

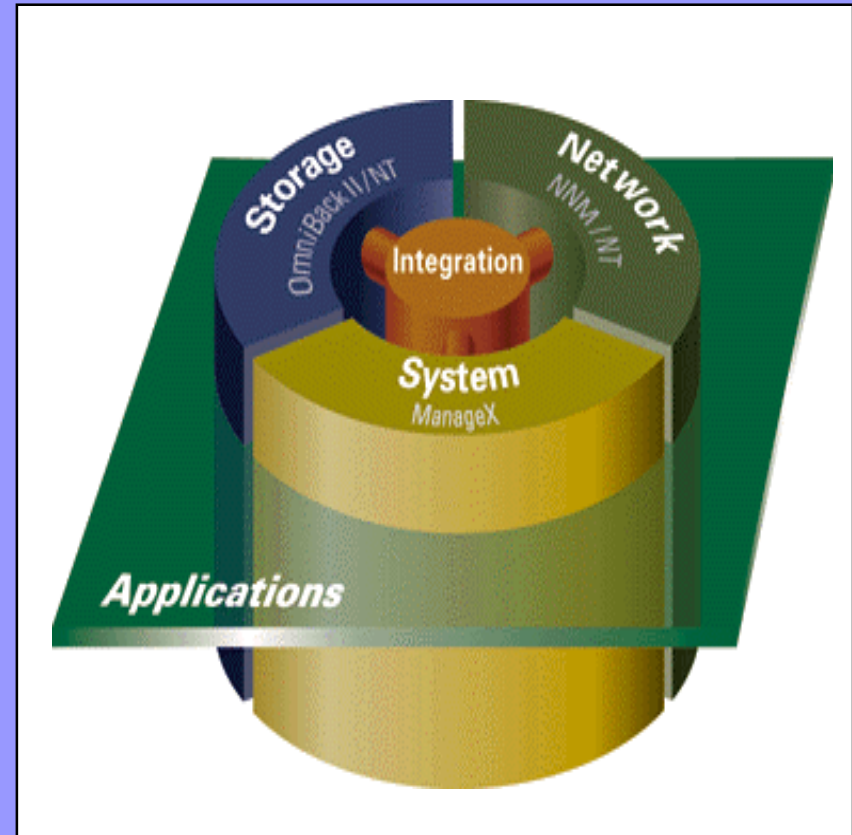
- Plug E-Service management into existing management infrastructure
- Easy, affordable, quick
- Bring server intelligence in house
- Assist IT services in supporting "E" Business model

Most management solutions shoot holes into your company's firewall



Baseline Requirements for Managing the Mid-market

- Visible value in a day
- Ability to deploy in a week
- Significant return-on-investment in two weeks
- Easily extensible in depth and breadth



Q & A