



# Wireless Mobile Workers

**Ted Burnham**

**SEAGULL**

Product Manager, TigerRay  
and Wireless-to-Host



Who is



?



# SEAGULL Solutions

## Enterprise Applications

### Mainframe



### Midrange



Web Host Access



Interactive GUI



Web GUI

HTML



HTML & WML



Business Components

Request XML

Request JAVA

Request COM

## Emulation



## Windows/Java Clients



## Browsers



## Integrate & Connect



# The Wireless Enterprise

- Not stock quotes and sports scores
- PIM functionality
- CRM
- Enterprise access
- VALUE!
- ROI!
- Flexible solution for today *and tomorrow*



# SEAGULL Wireless-to-Host Solution

- Connect back office to Wireless Web
- (re)Use Enterprise Application logic (not just data)
- Rapid results
- Use existing skills
- Non-invasive
- Cost-effective
- Supports today's *and tomorrow's* devices
- Anytime, anywhere (synchronous) access
- End-to-End Solution



SEAGULL™

# The Wireless/ Mobile Dream...



SEAGULL™



# Wireless Mobile Workers



*Anytime*

*Anywhere*



CDMA



EST



GMT



PST

TDMA



CDPD



*Any Device*



# Wireless Mobile Workers



What are wireless devices?



# Wireless devices

- WAP Phone
  - Has 'Micro' WML Browser
  - Enter "URL" of the Wireless Application
    - [mmm.seagullsw.com](http://mmm.seagullsw.com) or [wap.seagullsw.com](http://wap.seagullsw.com)



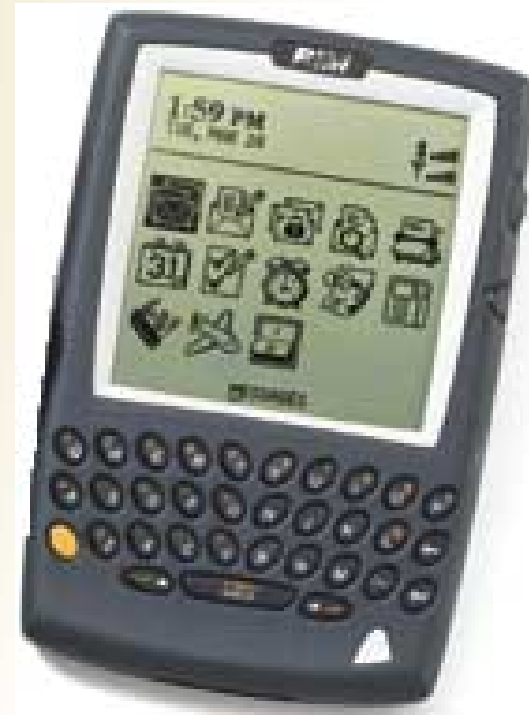
# Wireless devices

- Smart Phone
  - Has various types of browsers (tri mode- cHTML, HTML, WML)
  - Normal Browsing
  - Palm/ Pocket PC & Phone combined!



# Wireless devices

- Blackberry PDAs
  - Built-in modem
  - Real-time email access
  - Blackberry uses WAP browser



# Wireless devices

- WLAN
  - Tablets, virtually any device accepting a PC card



# Wireless devices

- Palm VII
  - Palm Query Applications-basically a hyperlink (PQA i.e. HTML)
  - Built-in modem
  - No supported micro browser available
  - All Web Clipping via Palm Query Applications (PQA)
  - \$199 !!





# Wireless devices

- Pocket PC/ Handheld PC
  - Relies upon an external wireless modem (additional hardware)
  - 3<sup>rd</sup> party browser or Pocket IE (access 'unclipped' HTML)
  - CDPD, GSM, PCS, Mobitex, 802.11b





# Wireless devices

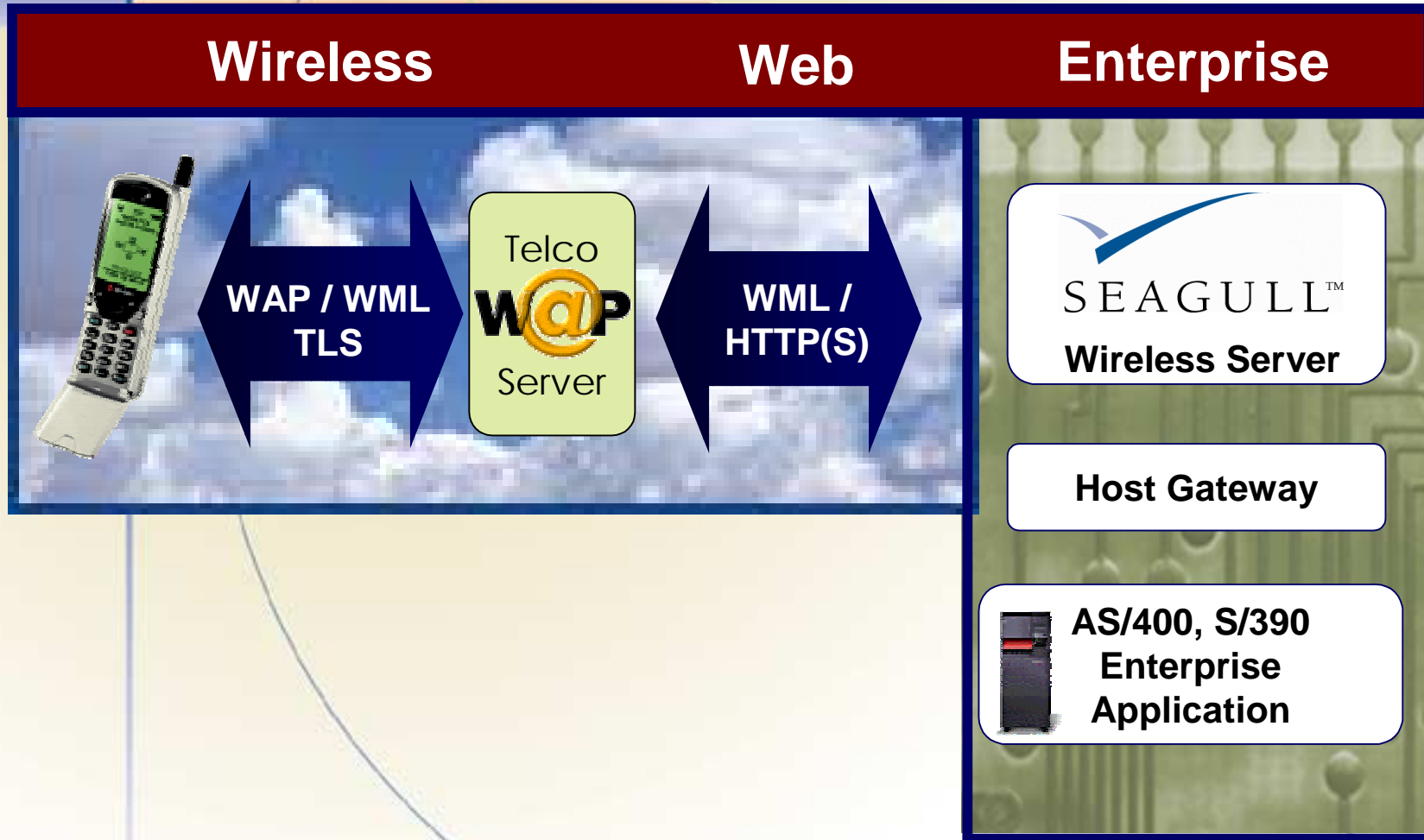
- CE/ Palm OS device via OmniSky, GoAmerica, or 3<sup>rd</sup> party access
  - Relies upon an external wireless modem/ phone (additional hardware)
  - 3<sup>rd</sup> party browser or Pocket IE (access 'unclipped' HTML)
  - CDPD, GSM, PCS, Palm.Net connections



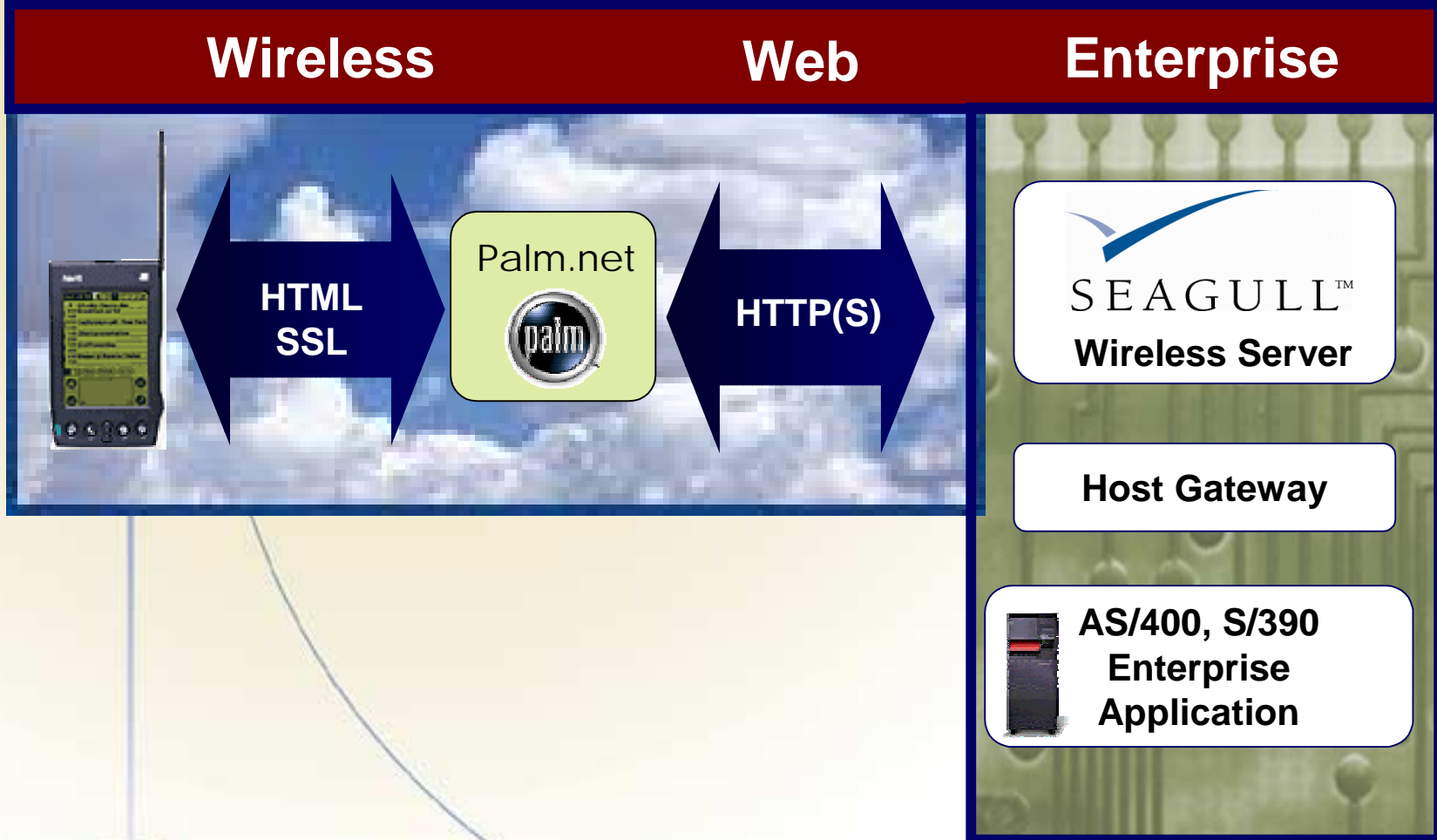
# Getting Connected



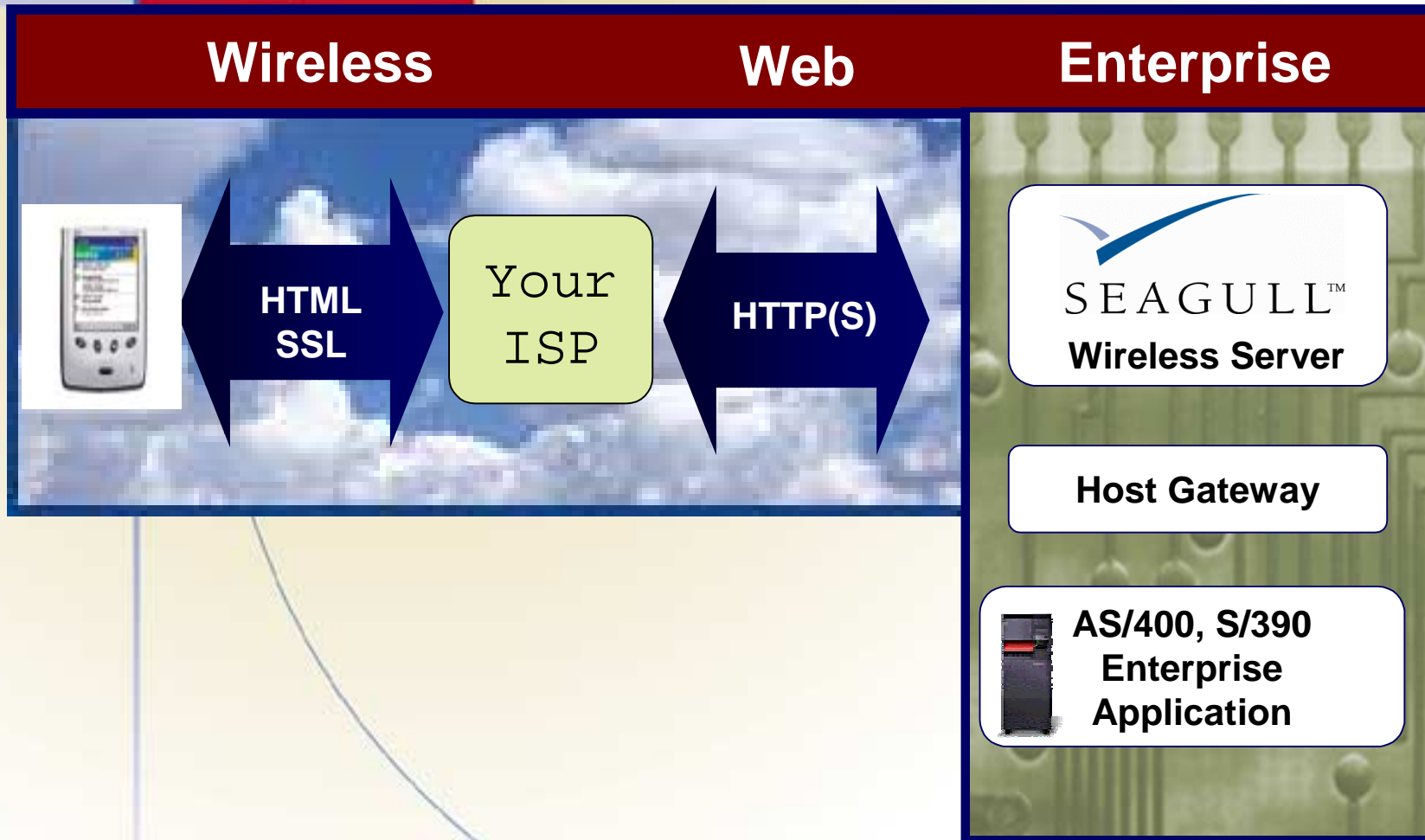
# Phones: WAP/ WML

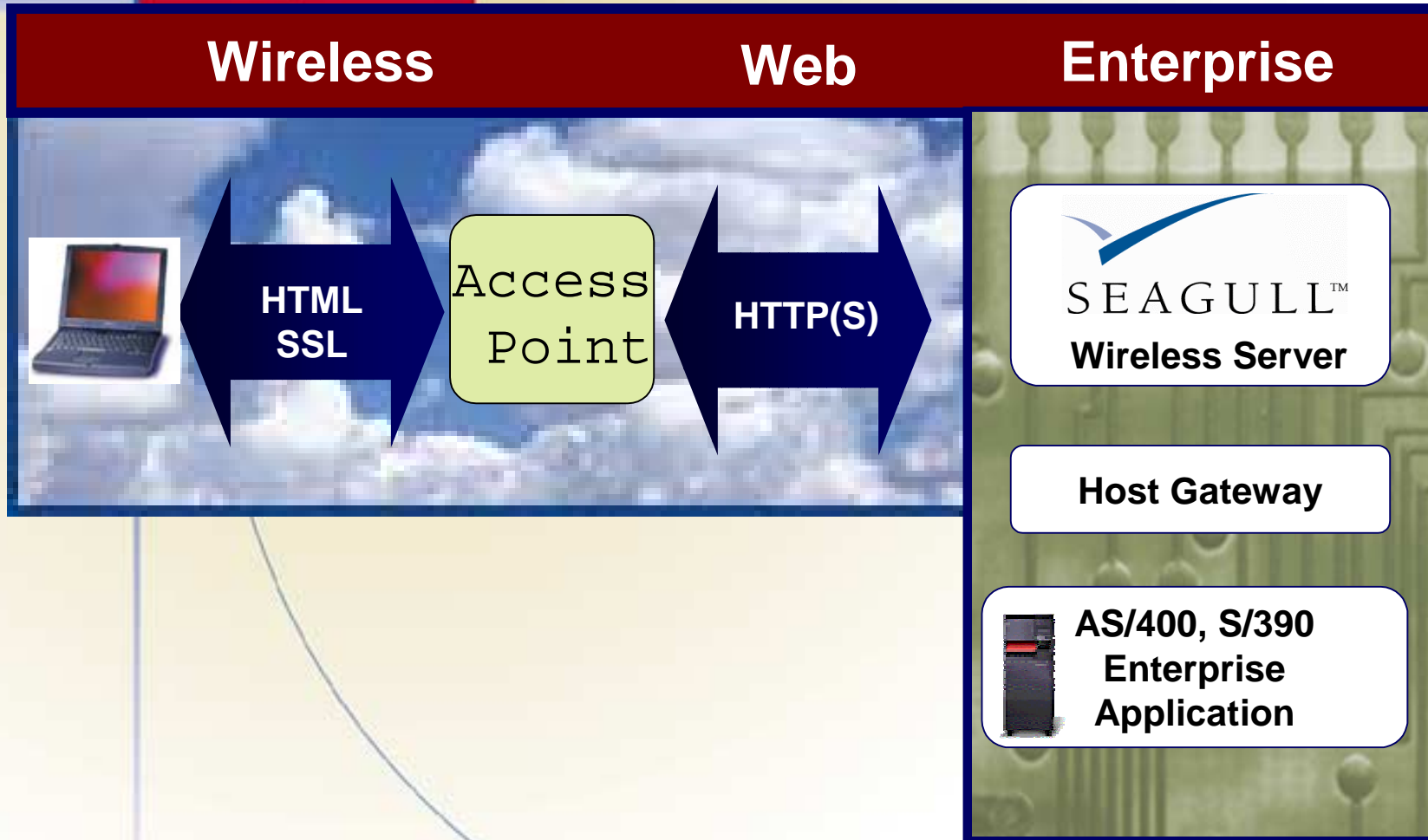


# PDAs: Palm/ HTML



# Pocket PC/ HTML





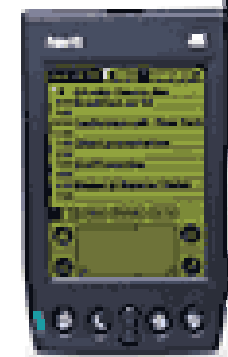


# SEAGULL Wireless

## The J.D. Edwards Solution

Allows a wireless user  
to perform:

- Account Inquiry
- Order Entry
- Stock Inquiry



**JDEdwards**  
Enterprise Software



**SEAGULL™**

# SEAGULL Wireless



## Order Entry (Enter Orders), screen 1

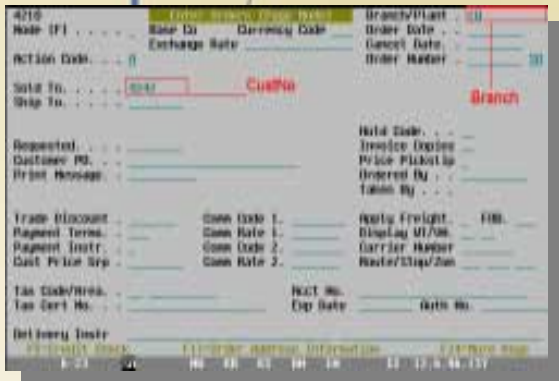
4210	<b>Enter Orders (Page Mode)</b>		Branch/Plant .	10
Mode (F) . . . . .	Base Co	Currency Code	Order Date . . .	_____
Action Code. . . . .	Exchange Rate	_____	Cancel Date. . .	_____
Sold To. . . . .	4242	CustNo	Order Number . .	_____ SO
Ship To. . . . .	_____	_____	Branch	_____
Requested. . . . .	_____	_____	Hold Code. . . .	_____
Customer PO. . . .	_____	_____	Invoice Copies	_____
Print Message. . .	_____	_____	Price Pickslip	_____
Trade Discount . .	_____	Comm Code 1. _____	Ordered By . . .	_____
Payment Terms. . .	_____	Comm Rate 1. _____	Taken By . . . .	_____
Payment Instr. . .	_____	Comm Code 2. _____	Apply Freight. .	FOB. _____
Cust Price Grp . .	_____	Comm Rate 2. _____	Display WT/UM.	_____
Tax Code/Area. . .	_____	_____	Carrier Number	_____
Tax Cert No. . . .	_____	_____	Route/Stop/Zon	_____
Delivery Instr	_____	Acct No. _____	Exp Date	_____
		Exp Date	Auth No.	_____
<b>F5=Credit Check</b> <b>F17=Order Address Information</b> <b>F24=More Keys</b> 6-23    SA      MW    KB    KS    DM    IM      II    12.6.96.137				



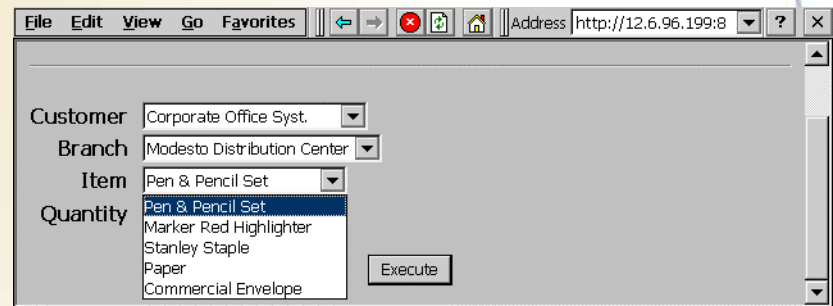
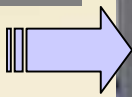


# SEAGULL Wireless

## Order Entry on the Palm VII, Pocket PC, and WAP Phone



Before...



After



# HP and SEAGULL



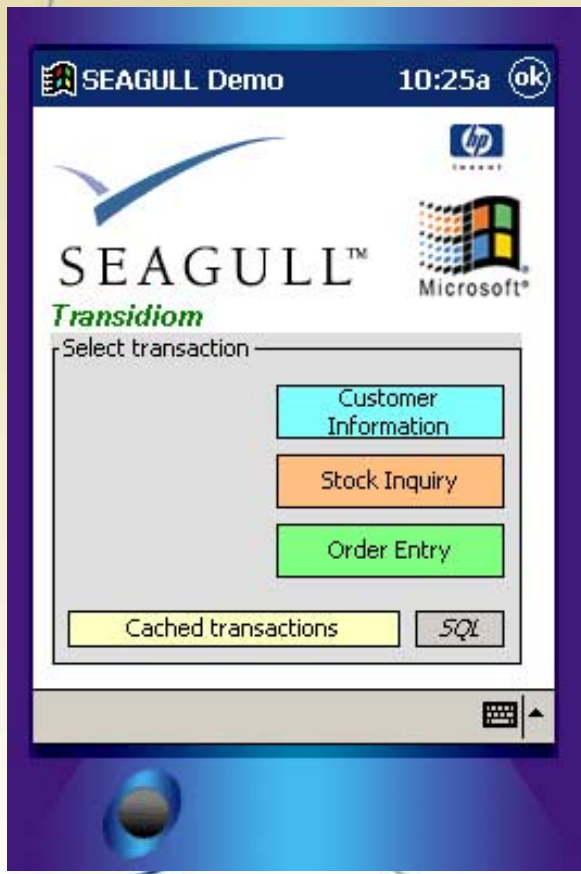
SEAGULL™

- Taking the back office to HP devices in real-time
  - Use and build upon your existing application
  - Mobile/ wireless access
  - Proven wireless technology



SEAGULL™

# SEAGULL Mobility



- Build offline/ sync capabilities
  - Your host applications available anywhere!
  - No connectivity issues
  - Access COM object, Java Bean or XML from SEAGULL Sync Server



SEAGULL™



# Other Mobile Solutions

## Enterprise Applications

Mainframe



Midrange



Interactive GUI

Windows/Java Clients



- J Walk or WinJa might suit your need!
- Predictable mobile and wireless device environments
- City of Portland Police Department

# Wireless Enterprise

## Why Wireless?

- Fast Development
  - Time to market is important
- Extend existing skills
  - Current application is utilized without host enhancement
- Process Efficiency
  - Give your wireless user the proper portions of the application, not all of it
- Real-time access and sync
  - Access your host application right now...
  - Or later when you sync



# End of presentation

## Ted Burnham

Product Manager, TigerRay  
and Wireless-to-Host

SEAGULL

tel: 404.760.1560 x2287

eburnham@seagullsw.com



SEAGULL™

