

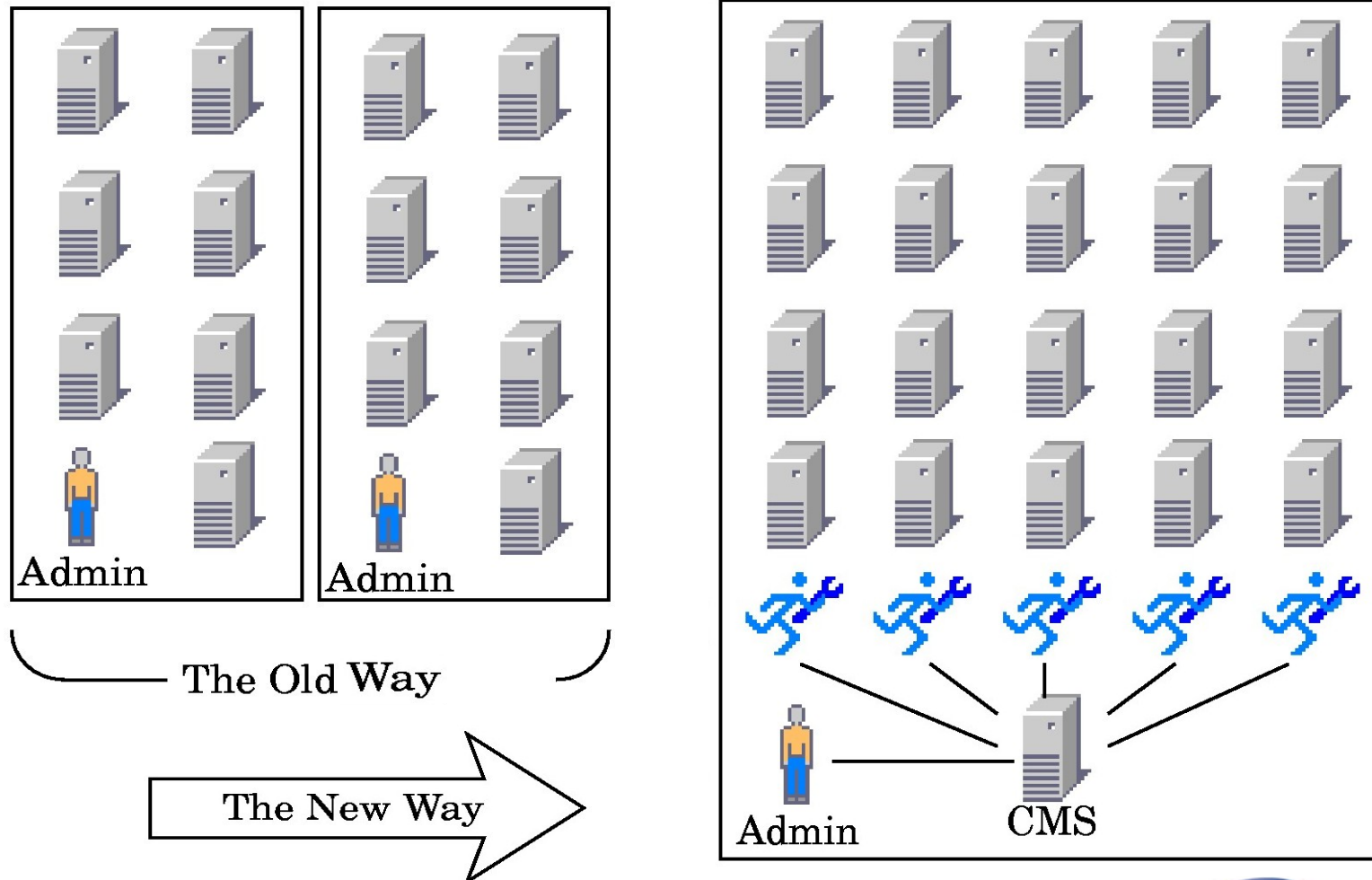
# ServiceControl Manager

Roc Paez

HP Education

Senior Education Consultant

# ServiceControl Manager Overview



# SCM Views



Node Groups view



Nodes view



Tools view

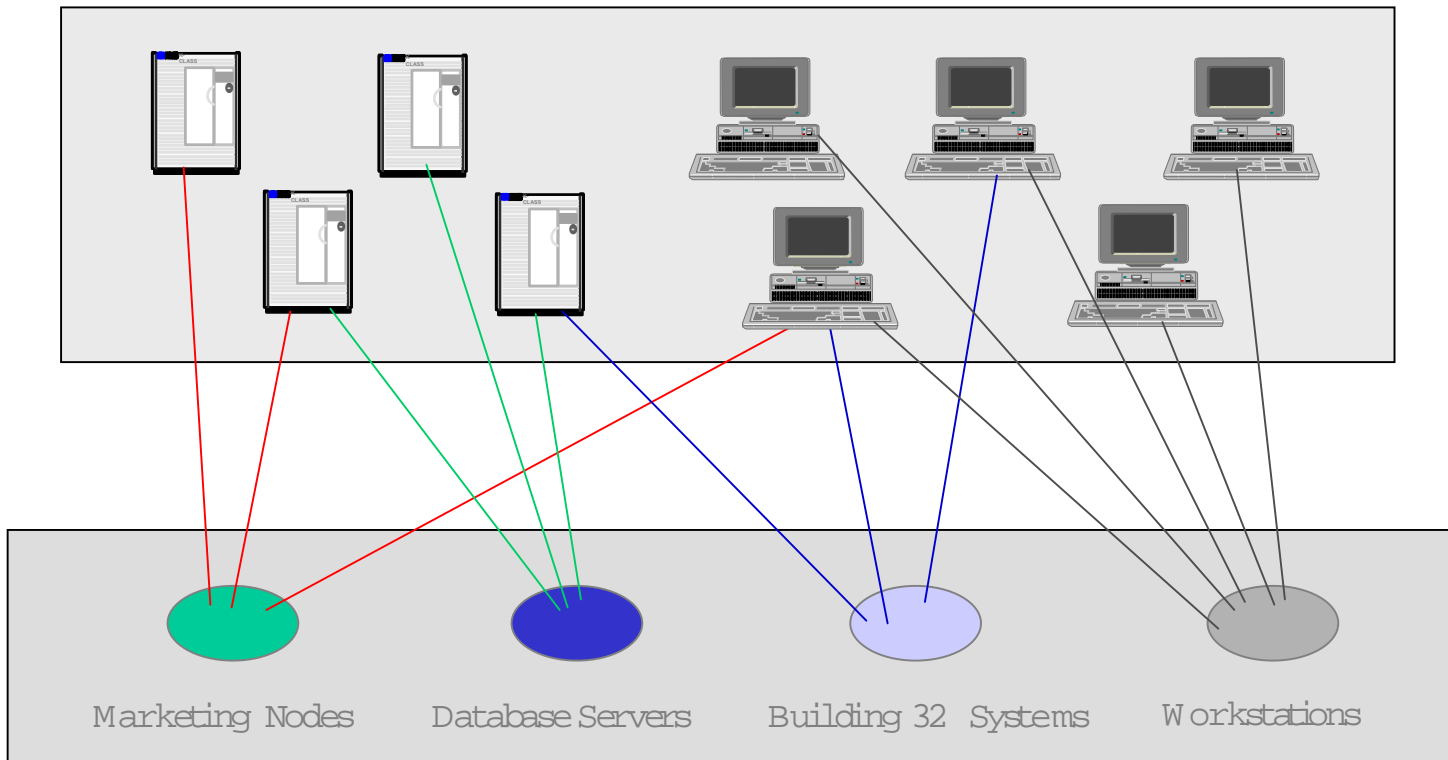


Users view

# SCM Nodes and Node Groups



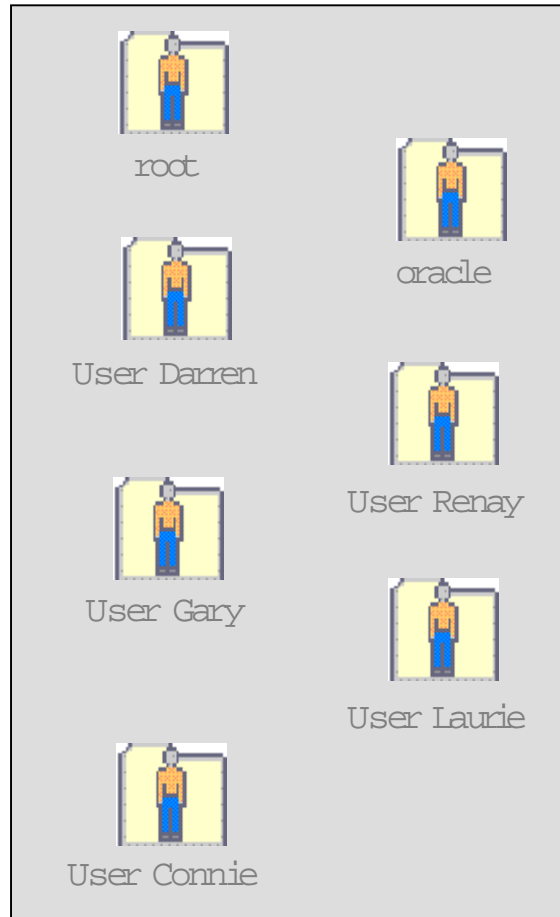
Nodes



Node Groups

# User and User Roles

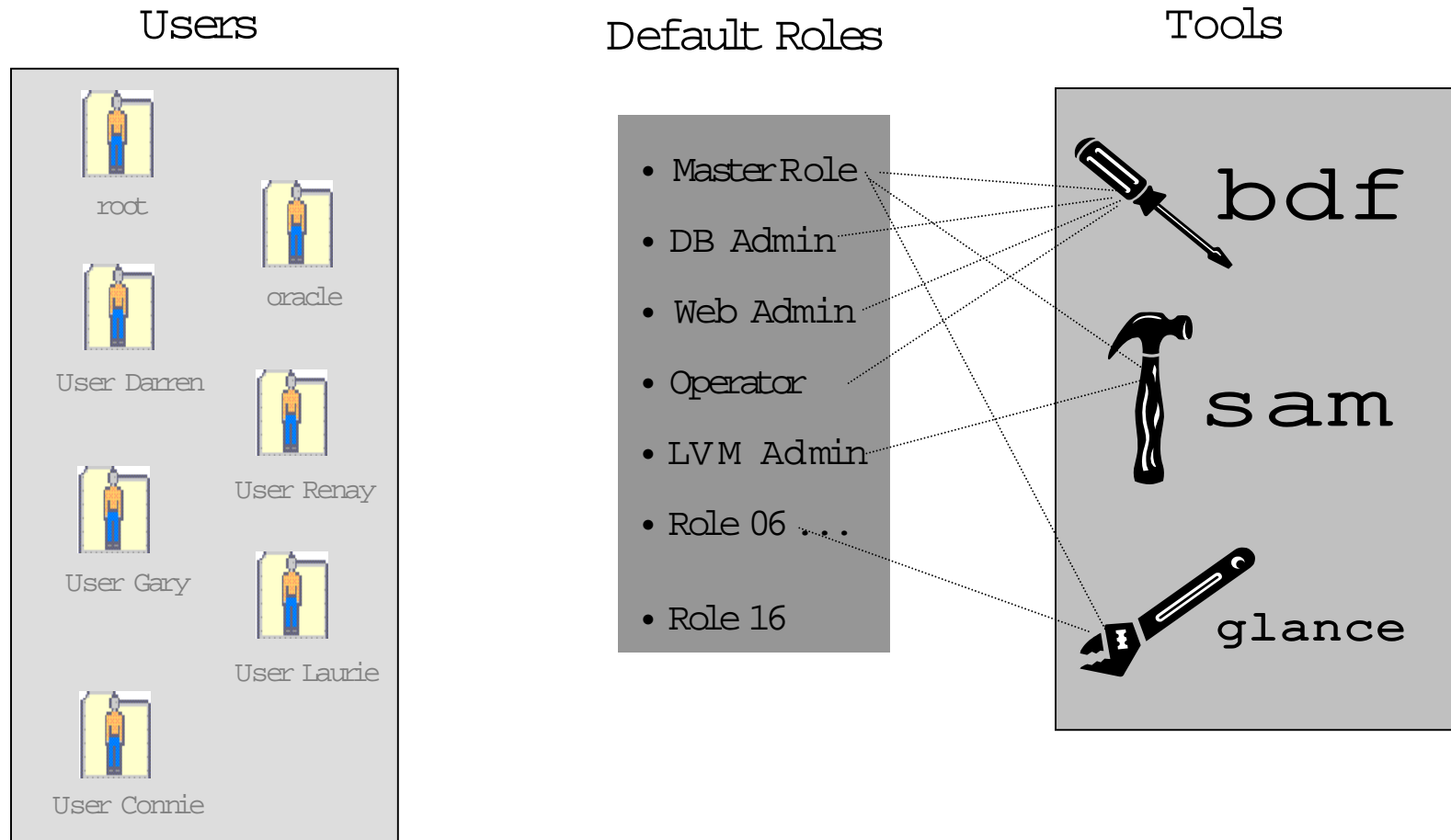
## Users



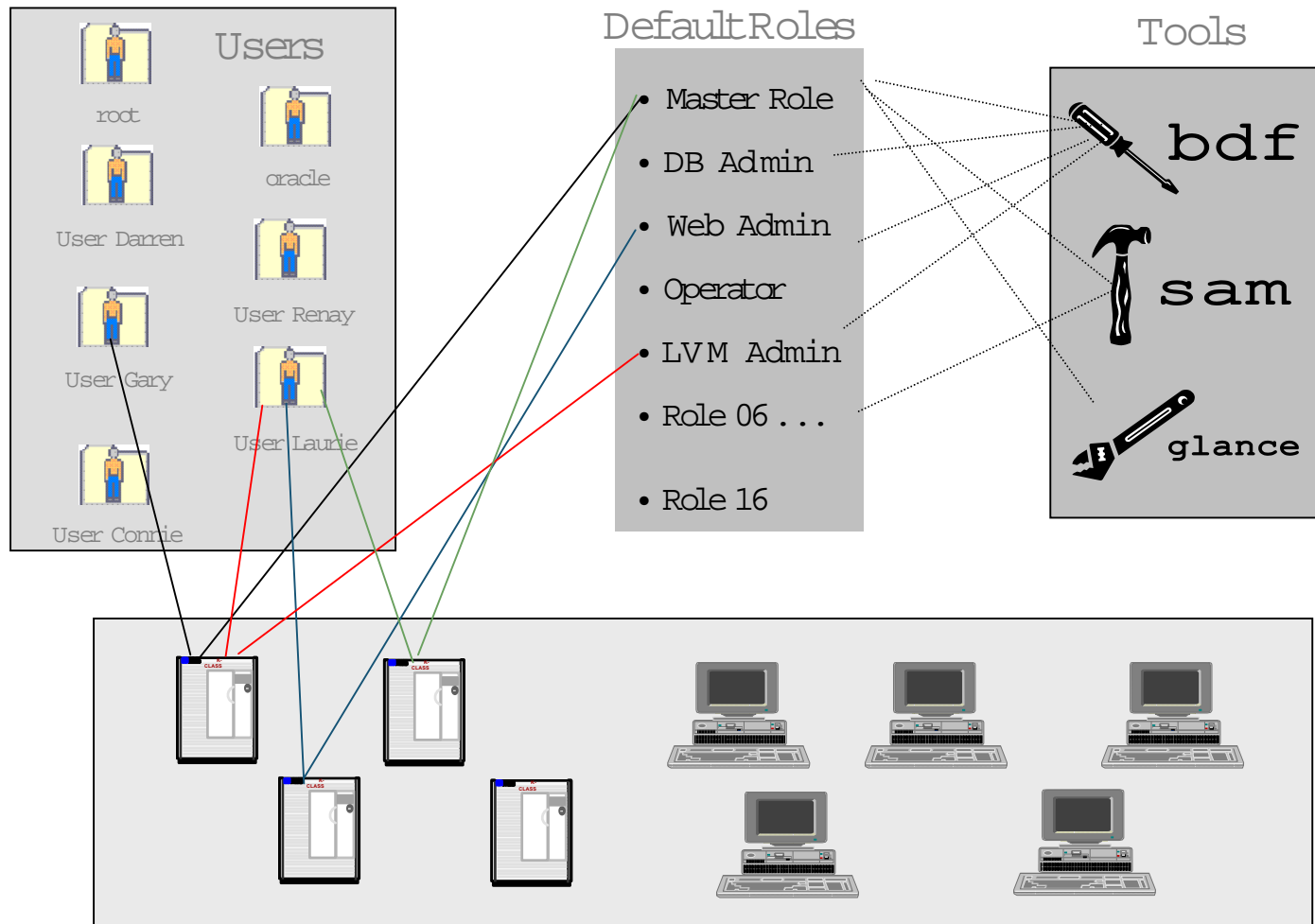
## Default Roles

- Master Role
- DB Admin
- Web Admin
- Operator
- LVM Admin
- Role 06 . . .
- Role 16

# Tools and User Roles



# Tools and User Roles



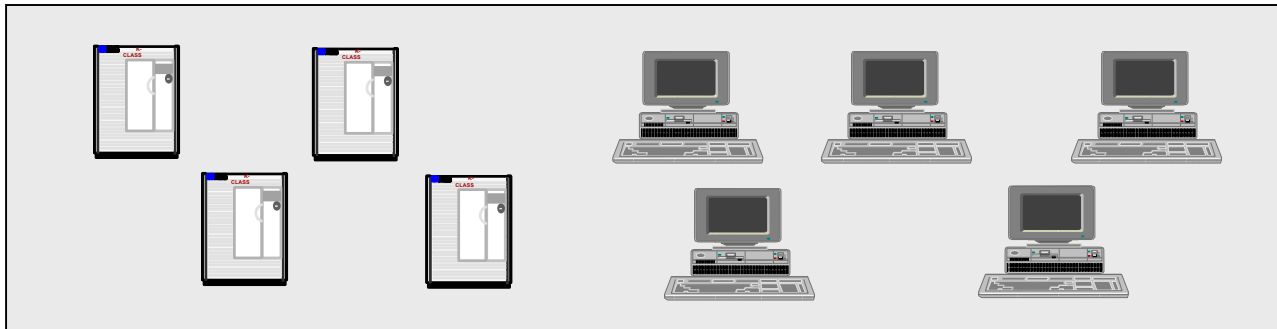
# Adding an SCM Node



SCM\_Mgr

```
# /opt/mx/bin/mxsetup
```

*This builds the /var/opt/mx/depot11 depot*

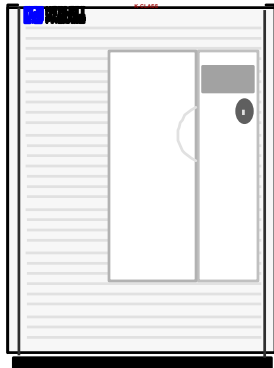


SCM  
Domain

```
# swinstall -s SCM_Mgr:/var/opt/mx/depot11 AgentConfig
```

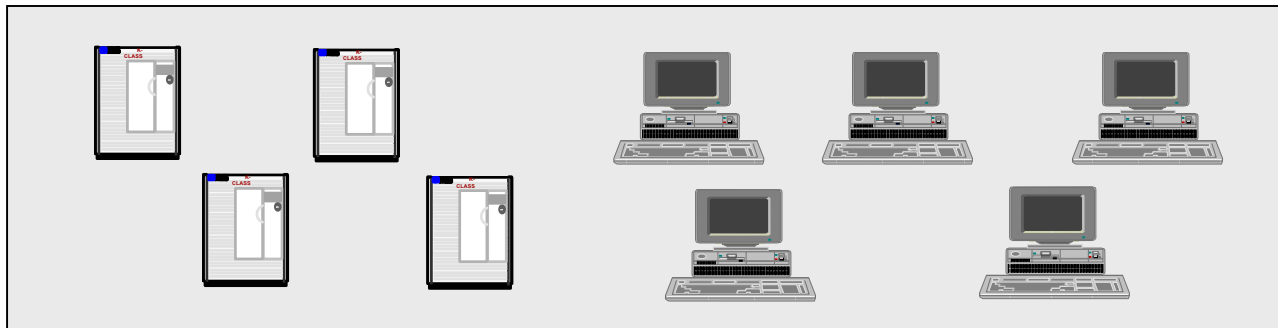


# Adding an SCM Node



```
# mxnode -a client_name  
# mxnode -lt
```

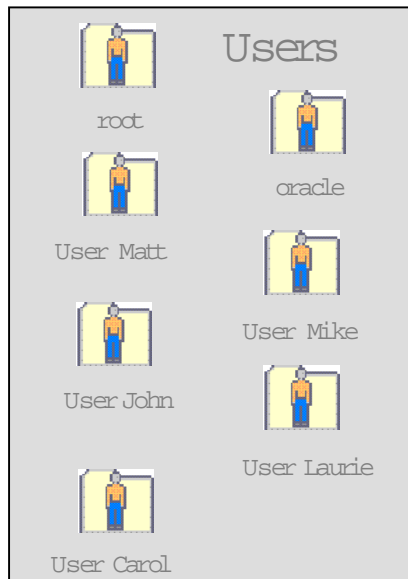
NAME	IP ADDRESS	MODEL	ADDED ON
AppSrvr	15.19.83.25	K600-4X	Aug 7, 2002 11:43:55 AM
DBSrvr	15.19.83.24	D200-1X	Aug 7, 2002 11:43:15 AM
WebSrvr	15.19.83.22	A400-6X	Aug 7, 2002 7:00:52 AM



SCM  
Domain

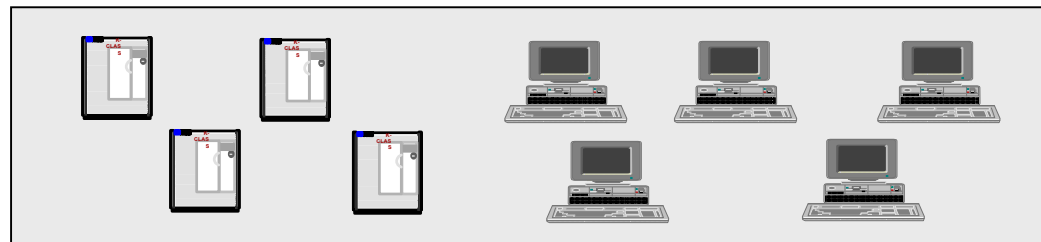
```
# swinstall -s SCM_Manager AgentConfig
```

# Adding an SCM User



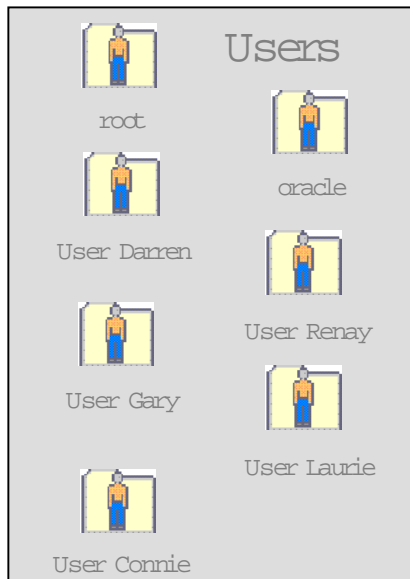
```
# mxuser -a -p +T -d "Sys Support" -u carol
# mxuser -a -p +T -d "Tech Lead" -u mike
# mxuser -a -p -T -u matt
# mxuser -lt
```

USER	TRUSTED?	COMMENT
carol	yes	Sys Support
matt	no	
mike	yes	Tech Lead
root	yes	Added as trusted user by mxsetup



SCM  
Domain

# Viewing / Modifying an SCM Role



## Default Roles

- Master Role
- DB Admin
- Web Admin
- Operator
- LVM Admin
- Role 06 . . .netadmin
- Role 16

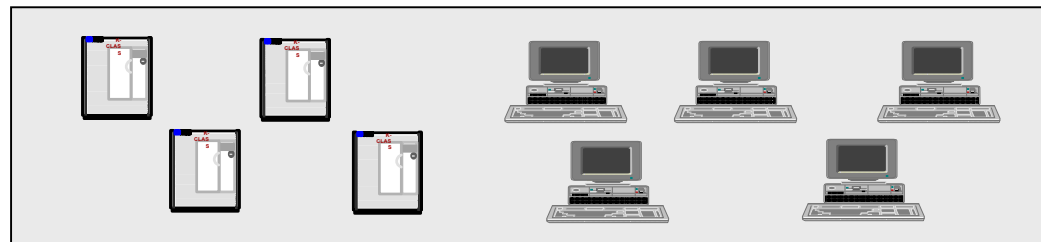
## # mxrole -lt

role6	true	For use by SCM admins
lvmadmin	true	LVM Admins
operator	true	Read-only operators
Master Role	true	The SCM Master Role

## # mxrole -m role6 -N netadmin

## # mxrole -m netadmin -d "Net Admin"

netadmin	true	Net Admins
lvmadmin	true	LVM Admins
operator	true	Read-only operators
Master Role	true	The SCM Master Role



SCM  
Domain

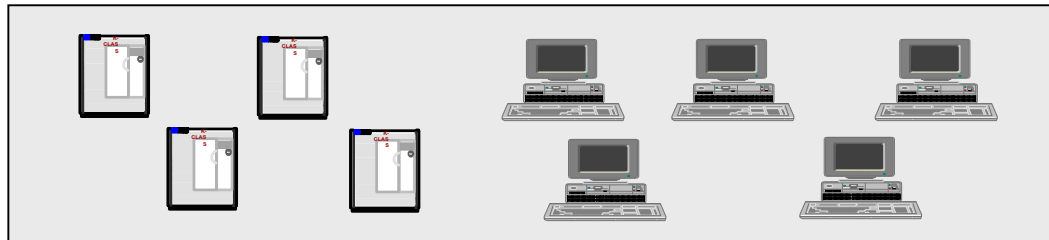
# Viewing SC M Tools

```
# mxtool -lt
```

## Tools



CATEGORY	TOOL NAME	DESCRIPTION
Apt_Get Software Management	apt-get upgrade	Install newest vers
Event Monitoring Service	EMS Configuration	Configure and view
General Tools	ps	ps <options>
General Tools	rm	rm [options] <file>
Ignite and Recovery	Create Recovery Archive	Create or modify a
Partition Management	Partition Manager	Starts Partition Ma
Partition Management	Show Complex Details	Starts Show Complex
Rpm Software Management	rpm install	Install rpm package
SCM Management	Preview Reconfigure Agent	This tool previews
SCM Management	Reconfigure Agent	This tool reconfigu
SCM Management	Show Agent Information	This tool displays
Software Management	CLI List Software	Example tool that r
Software Management	CLI Preview Install	Example tool that r
System Administration	Disks and File Systems	HPUX SAM Disks and
System Administration	Kernel Configuration	HPUX SAM Kernel Con
TopTools	Set TopTools Access	Set or delete TopTo



SCM  
Domain

# Tools Supplied with SC M

## Event Monitoring Services (EMS)

- EMS configuration tool

## General tools

- `bdf`, `cat`, `cp`, `find`, `ls`, `mv`, `ps`, `rm`

## Ignite-UX and recovery

- Install working archive
- Create and update archive
- Ignite-UX console access
- Ignite-UX configuration

## Software Management

- SD-UX
- Software/updates distributor
- Log viewer
- SD-UX configurator

## System Administration

- SAM

## System Inventory

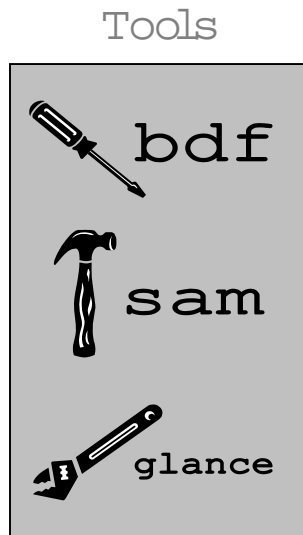
- System Configuration Repository
- Create and compare configurations

## Local Tools

- Not in initial listing
- Default for user-created tools

# Modifying an SCM Tool

```
# mxtool -ld -t bdf
# mxtool -lf -t bdf > /tmp/bdf.tdef
```

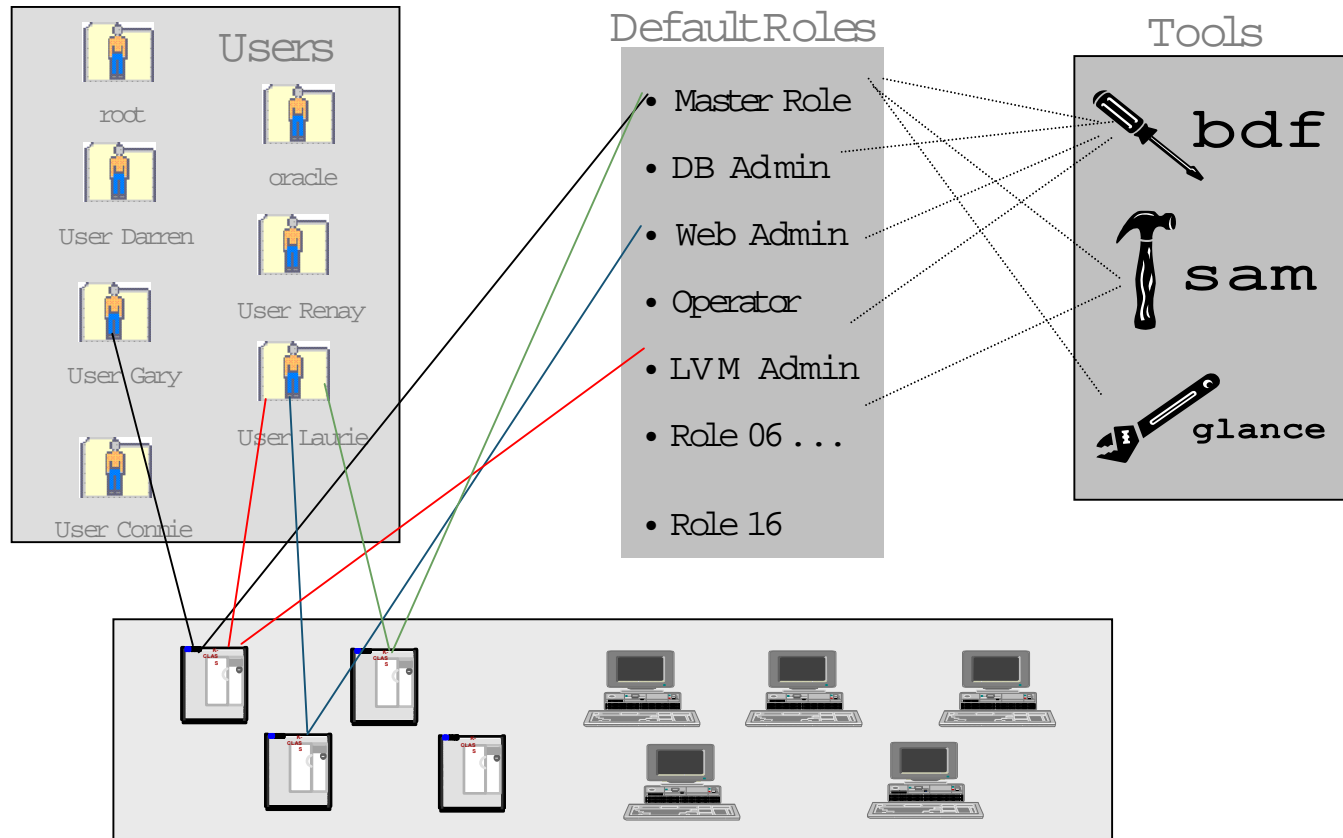


```
//
// This tool definition was automatically
// generated by the ServiceControl Manager
//
SSA tool "bdf" {
  description "bdf [options] (Available on HP-UX only)"
  comment "All arguments are optional"
  category "General Tools"
  revision "1.0"
  execute {
    command "bdf "
    arguments {
      " " : "Specify all of the bdf args: " optional
    }
    nolaunch
    log
  }
  roles {
    "Master Role", "lvmadmin"
  }
}
```

*This is the modification*

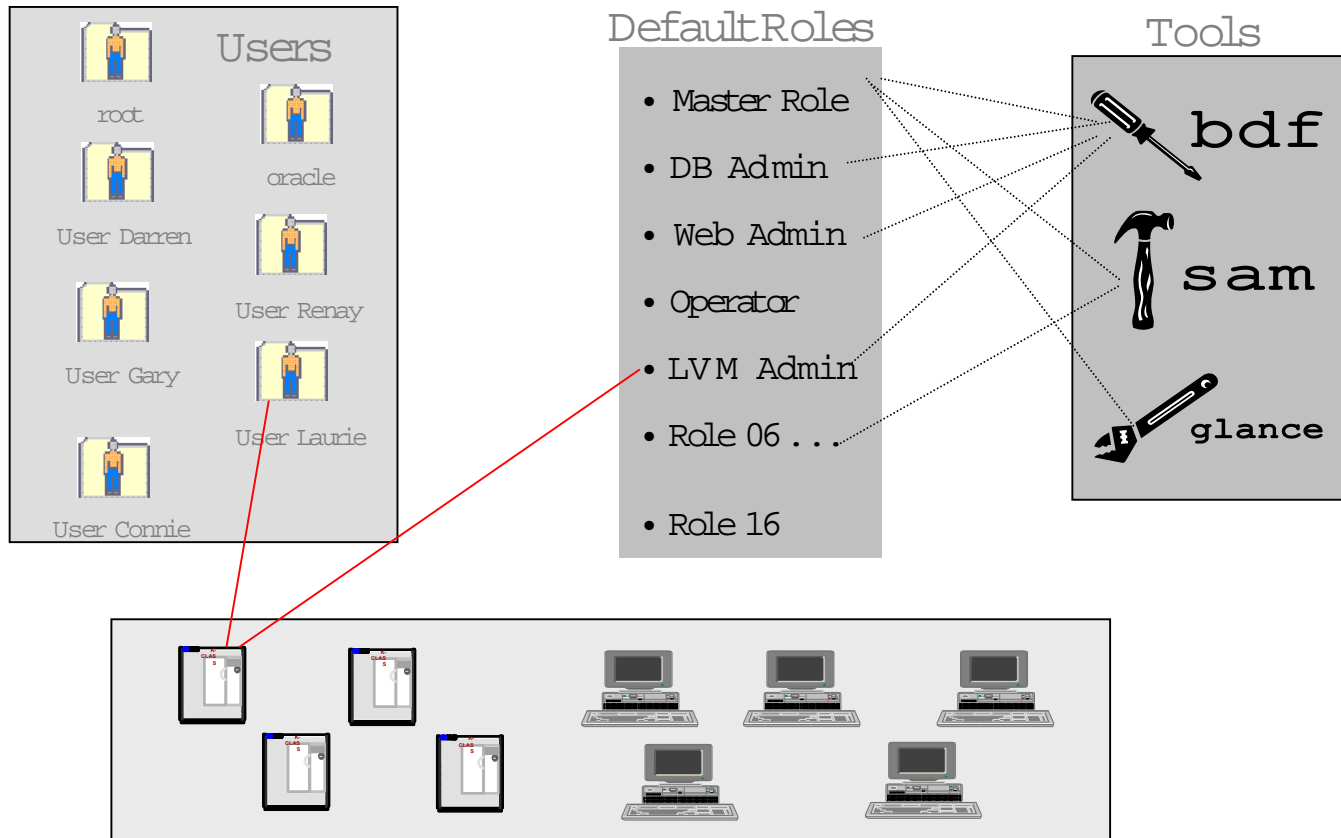
```
# mxtool -s -f /tmp/bdf.tdef
# mxtool -m -f /tmp/bdf.tdef
```

# Tools and User Roles



```
# mxauth -a -u Gary -R "Master Role" -n AppSrvr
# mxauth -a -u Laurie -R lvmadmin -n AppSrvr
# mxauth -a -u Laurie -R webadmin -n WebSrvr
```

# Executing Tools on Nodes

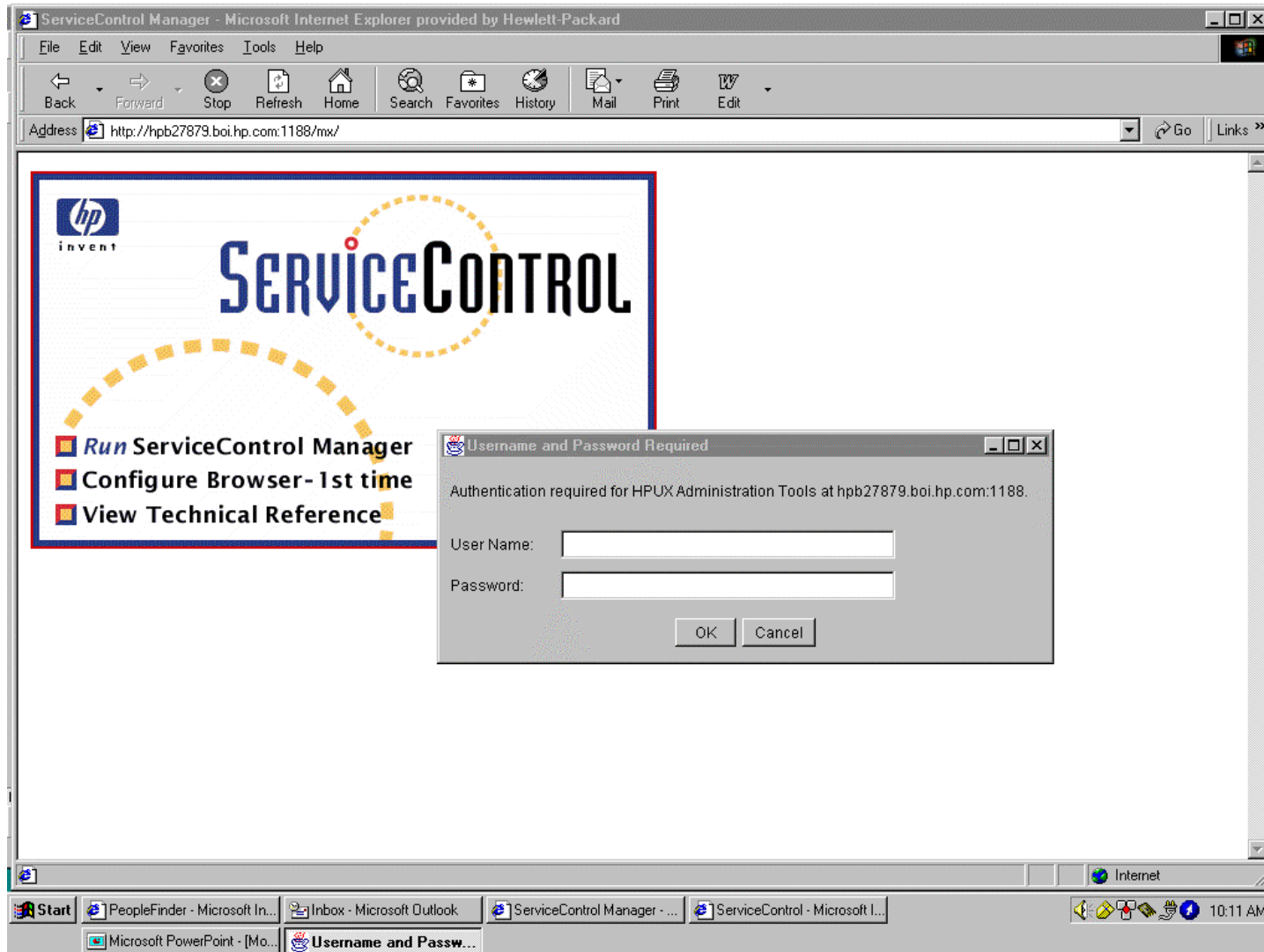


```
# mxexec -t bdf -n AppSrvr
```

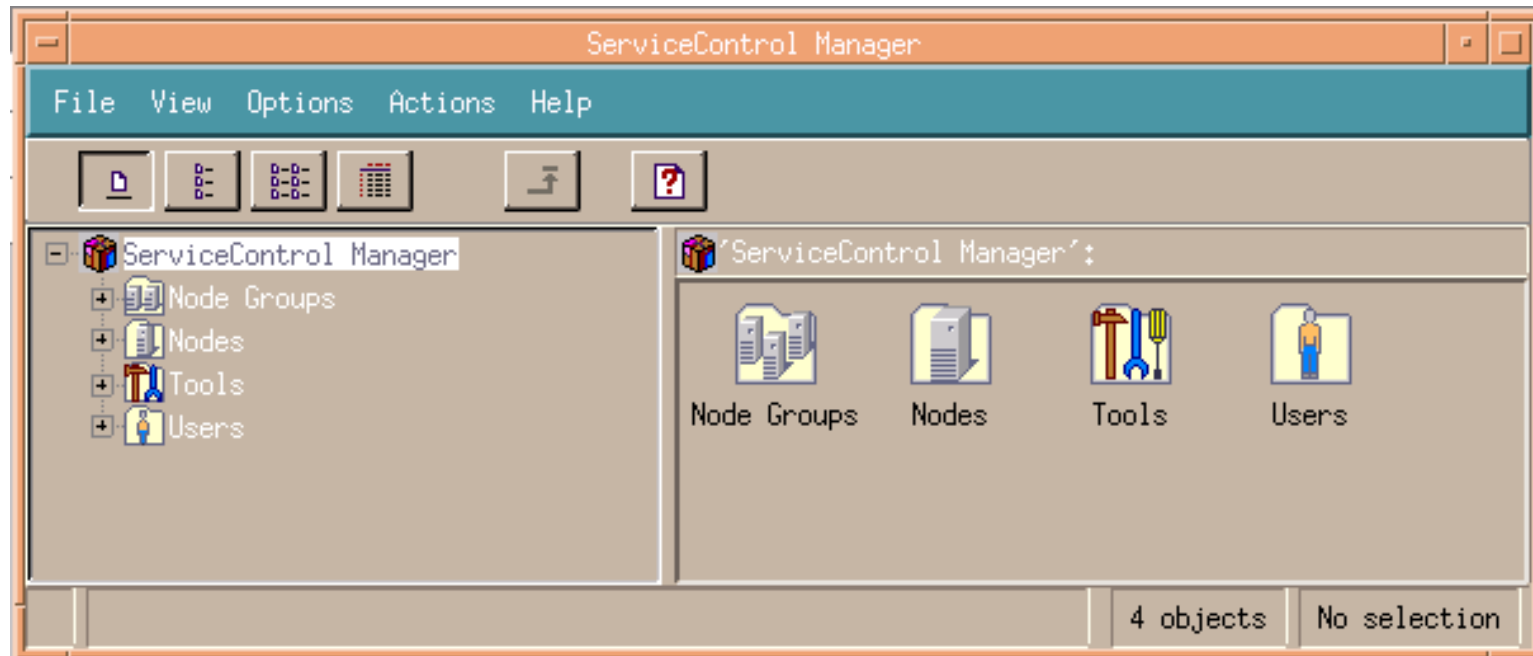
```
Running tool bdf with task id 1
Task ID      : 1
Tool Name    : bdf
Task State   : Complete
```



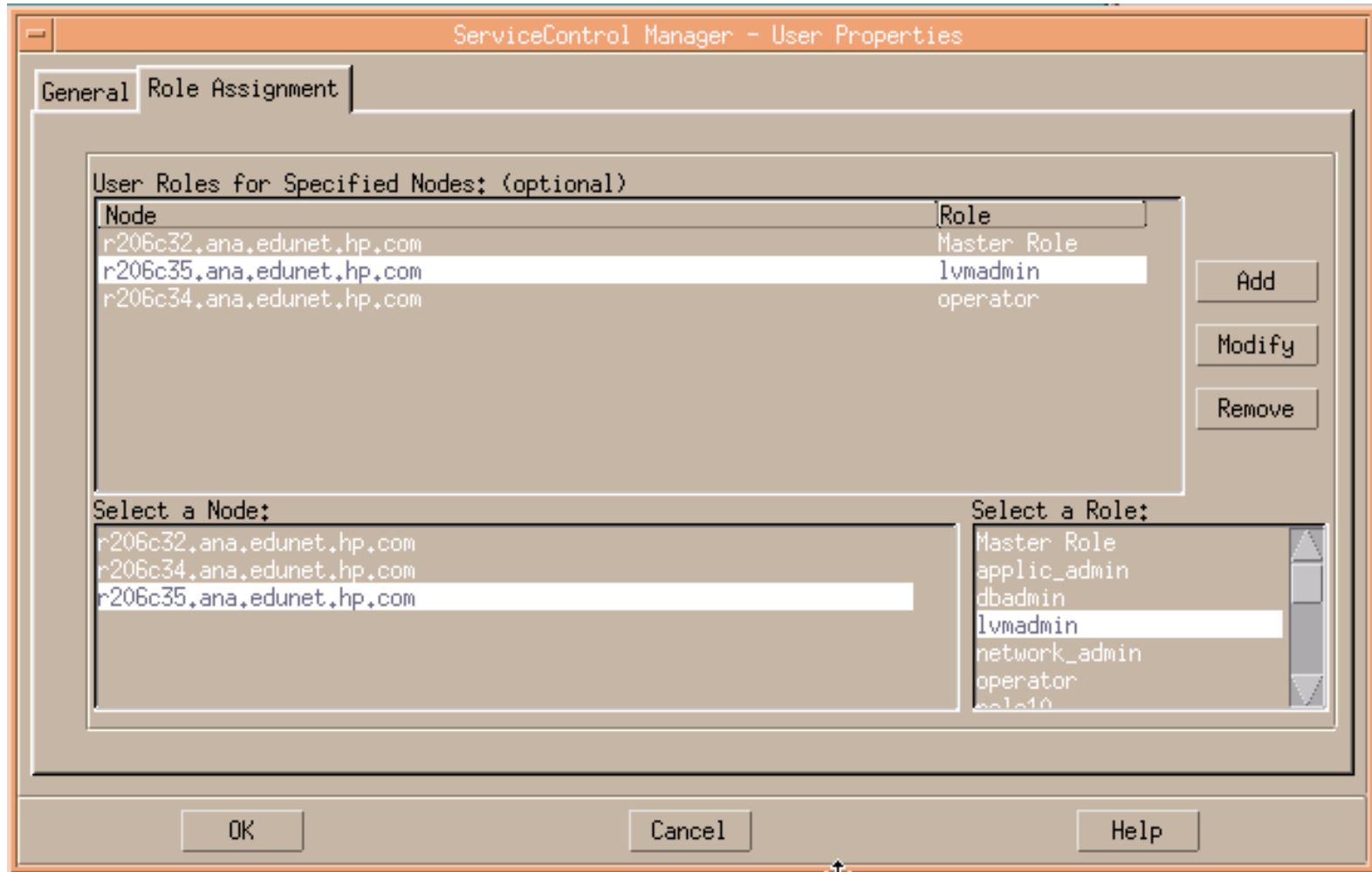
# SCM - Web Interface



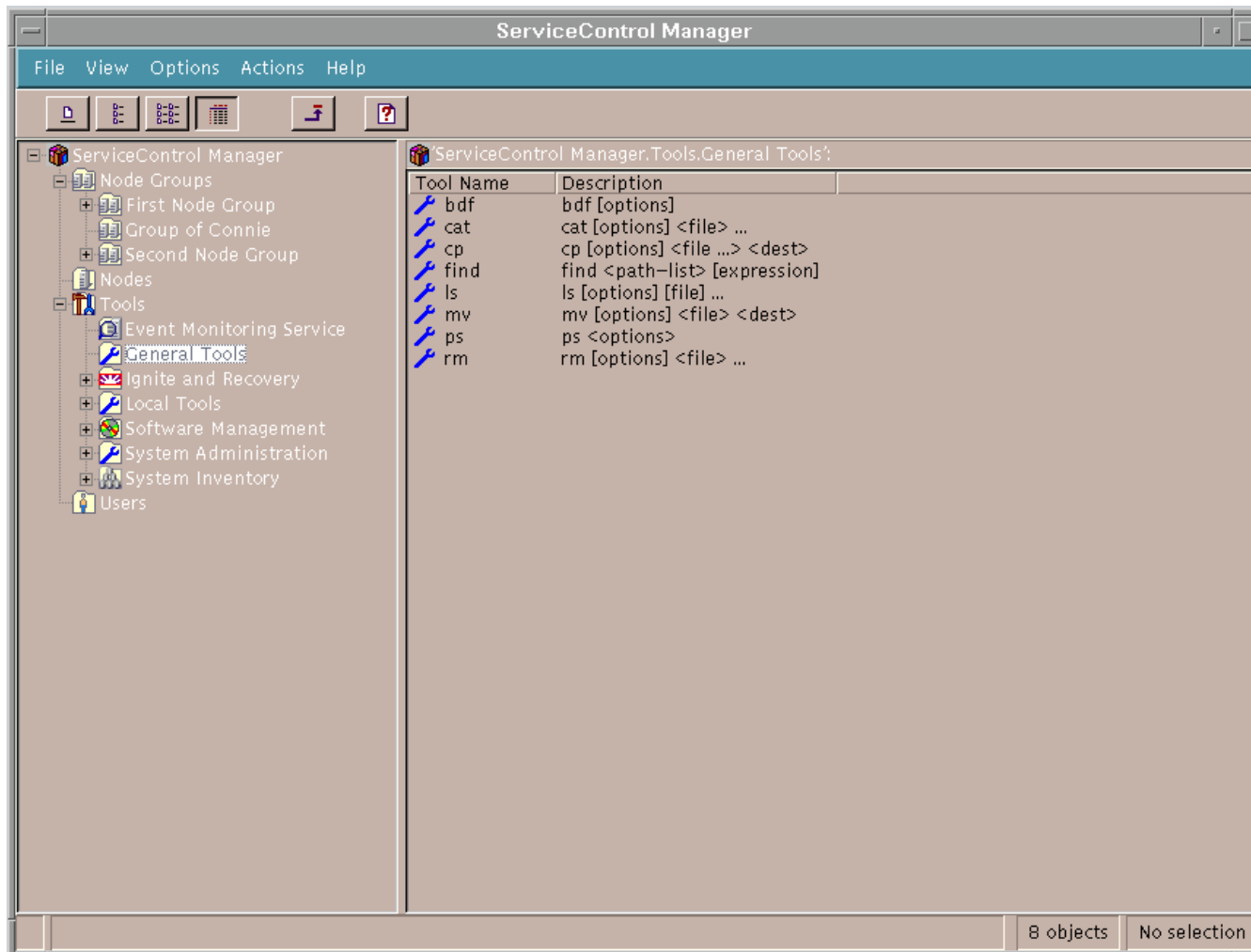
# SCM - Graphical User Interface



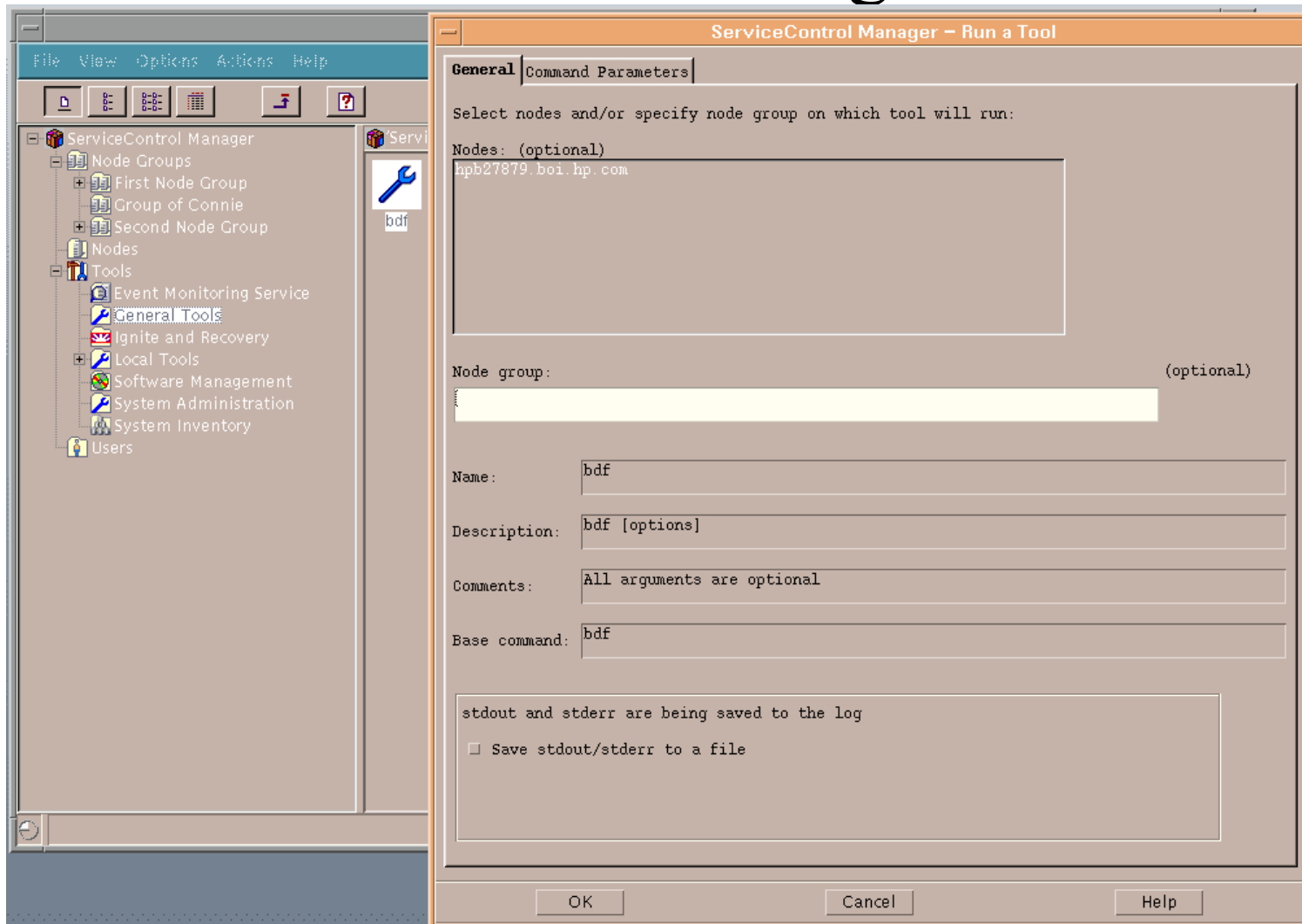
# SCM GUI - Role Assignment



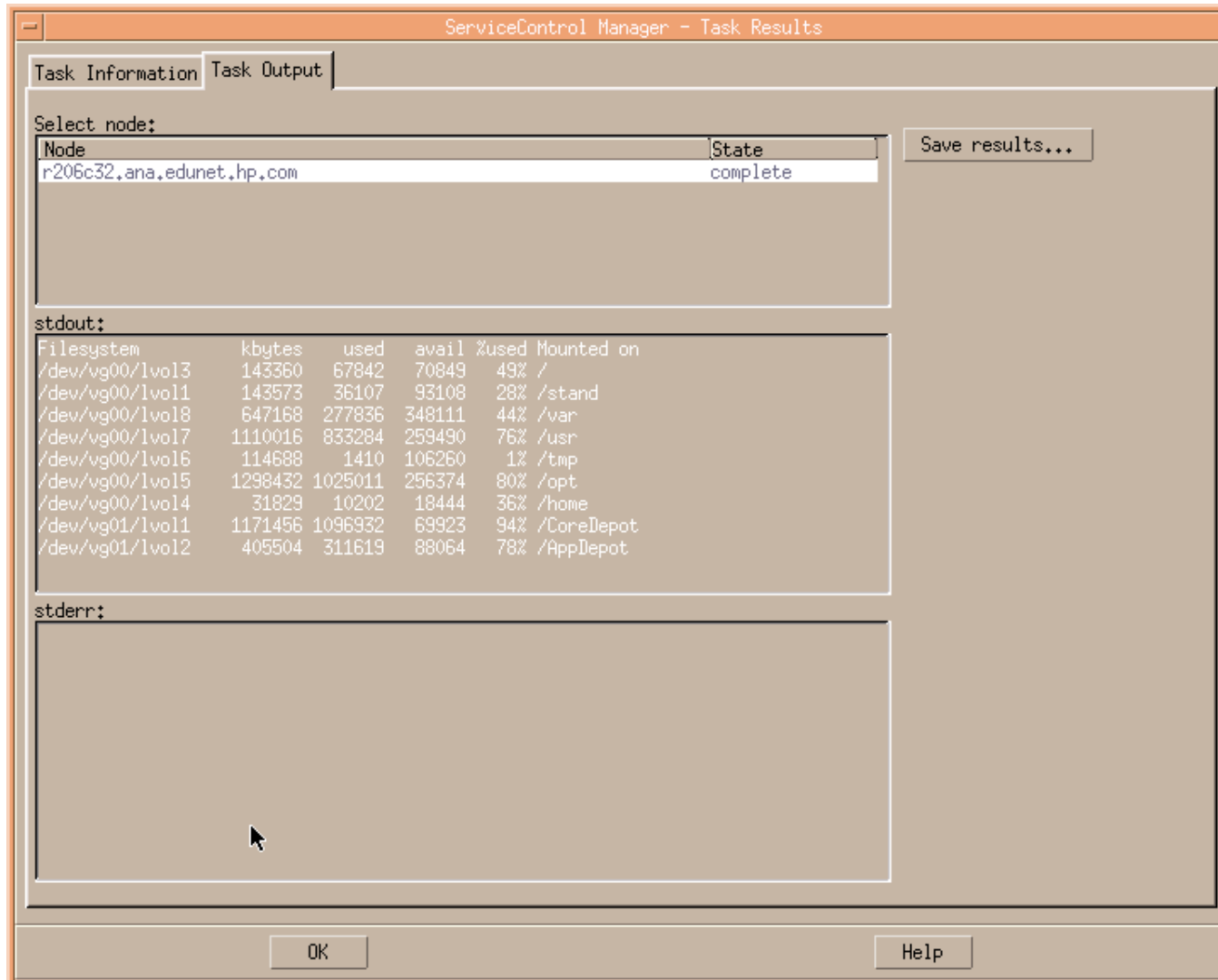
# SCM GUI - Select Tool to Execute



# SCM GUI - Executing a Tool



# SCM GUI - Command Output



The screenshot shows a window titled "ServiceControl Manager - Task Results". It has two tabs: "Task Information" and "Task Output", with "Task Output" being the active tab. The window contains a "Select node:" section with a table listing nodes and their states. A "Save results..." button is located to the right of this table. Below the node selection is a "stdout:" section containing a table of filesystem usage statistics. At the bottom of the window are "OK" and "Help" buttons.

Select node:

Node	State
r206c32.ana.edunet.hp.com	complete

Save results...

stdout:

Filesystem	kbytes	used	avail	%used	Mounted on
/dev/vg00/lvol3	143360	67842	70849	49%	/
/dev/vg00/lvol11	143573	36107	93108	28%	/stand
/dev/vg00/lvol18	647168	277836	348111	44%	/var
/dev/vg00/lvol17	1110016	833284	259490	76%	/usr
/dev/vg00/lvol6	114688	1410	106260	1%	/tmp
/dev/vg00/lvol15	1298432	1025011	256374	80%	/opt
/dev/vg00/lvol4	31829	10202	18444	36%	/home
/dev/vg01/lvol11	1171456	1096932	69923	94%	/CoreDepot
/dev/vg01/lvol2	405504	311619	88064	78%	/AppDepot

stderr:

OK Help

# Viewing the SCM Log File

```
# cat /var/opt/mx/logs/scmgr.log
START SUCCESS 8/8/02 2:14:55 PM CONFIG NOTE root START NODE node1.hpes.hp.com
Agent reporting in.
DONE SUCCESS 8/8/02 2:15:40 PM CONFIG SUMMARY root ADD NODE node1.hpes.hp.com
DONE SUCCESS 8/8/02 2:15:46 PM CONFIG SUMMARY root ADD AUTHORI mxauth
Attempt to add authorization "root:Master Role:node1.hpes.hp.com" succeeded.
...
INTERM SUCCESS 8/8/02 2:16:01 PM CONFIG VERBOSE root ADD TOOL
/var/opt/mx/tools/emstools.tdef
Start parsing file.
INTERM SUCCESS 8/8/02 2:16:02 PM CONFIG VERBOSE root ADD TOOL
/var/opt/mx/tools/emstools.tdef
Successfully completed parsing file.
DONE SUCCESS 8/8/02 2:16:06 PM CONFIG SUMMARY root ADD TOOL
/var/opt/mx/tools/emstools.tdef
Successfully added 1 tool.
...
START SUCCESS 8/8/02 2:21:04 PM CONFIG SUMMARY root RUN GUI
START SUCCESS 8/8/02 2:29:01 PM TASK SUMMARY root RUN EXEC bdf
INTERM SUCCESS 8/8/02 2:28:04 PM TASK VERBOSE root RUN EXEC bdf
Completed building runnable tool
INTERM SUCCESS 8/8/02 2:28:04 PM TASK VERBOSE root RUN EXEC bdf
Successfully validated runnable tool
INTERM SUCCESS 8/8/02 2:28:10 PM TASK DETAIL root RUN EXEC bdf
Start running tool with task id: 1
START PROGRESS 8/8/02 2:28:10 PM TASK VERBOSE root START TASK 1
Running Toll: bdf
Expanded Command Line: bdf
Targets:
node1.hpes.hp.com
DISPLAY value: cmsnode.hpes.hp.com:0.0
Run as user UID: 0
```