

Implementing OpenView Storage Area Management

Tony Catone

Philadelphia Stock Exchange

Hardware Environment

- Sun Enterprise and Sun Fire servers
- HP servers
- EMC Symmetrix
- HDS 9200
- VA 7100
- Sun and HP disks for OS

Application Environment

- Real-time high data rate transaction processing systems
- OLTP databases
- Data Warehouse databases

Drivers

- Over 7 TB of data with no consolidated management view
- Time consuming to generate reports of data usage by group across servers
- Complex to manage environment using individual management tools (switches, arrays, HBAs)

PHLX - hp OpenView storage area manager

File View Tools Help

PHLX

- Storage Networks
 - FC Direct Attached
 - SAN-1
- Hosts
 - obpdev
 - obpsrv1
 - obpsrv2
 - ovo1.phlx.com
- Interconnect Devices
 - emcsw1.phlx.com
 - emcsw2.phlx.com
 - Hub(s)-1
- Storage Devices
 - EMC Symmetrix Disk Array
 - HP SureStore Virtual Array 71C
 - Unknown Device(s)
- NAS Devices
- Groups
- LUN Allocation
 - Share Groups
 - Associated LUN Groups
 - Host Groups
 - LUN Groups
- Accounting
 - Customers
 - Service Levels

Storage Domain: PHLX

Home | List | Capacity | LUN Allocation | Performance | Accounting

hp
invent
hp OpenView
storage area manager

- storage node manager
 - storage network map
 - discovery overview
 - storage domain summary
- storage optimizer
 - hosts performance
 - storage device performance
 - interconnect performance
- storage allocator
 - storage domain summary
 - host-lun allocation
 - host groups
- storage builder
 - storage availability
 - host storage utilization
 - storage reports
- storage accountant
 - accounting summary
 - customers
 - service levels

Storage Events Show all Use filter Displayed Events: 222 Total Events: 222

Severity	Occurred	Source	Message
Warning	July 12, 2002 11:21:42 AM EDT	emcsw2.phlx.com	192.9.201.58: status changed from UNKNOWN to UNREACHABLE
Warning	July 12, 2002 12:37:17 PM EDT	obpsrv1	Device 192.9.201.25: changed status from GOOD to UNREACHABLE
Warning	July 12, 2002 12:41:02 PM EDT	EMC Symmetrix Disk Array	EMCSYMMETRIX500374: status changed from GOOD to UNREACHABLE
Warning	July 12, 2002 1:03:25 PM EDT	obpdev	Device 192.9.201.254: changed status from GOOD to UNREACHABLE
Warning	July 12, 2002 12:41:02 PM EDT	EMC Symmetrix Disk Array	EMCSYMMETRIX500374: status changed from GOOD to UNREACHABLE
Warning	July 12, 2002 12:37:17 PM EDT	obpsrv1	Device 192.9.201.25: changed status from GOOD to UNREACHABLE
Warning	July 12, 2002 1:03:25 PM EDT	obpdev	Device 192.9.201.254: changed status from GOOD to UNREACHABLE

Storage Networks - hp OpenView storage area manager

File View Tools Help

PHLX

- Storage Networks
 - BAN-1
 - BAN-7
 - BAN-8
 - BAN-9
- Hosts
 - obpdev
 - obpsrv1
 - obpsrv2
 - ovo1.phlx.com
- Interconnect Devices
 - emcsw1.phlx.com
 - emcsw2.phlx.com
 - Hub(s)-2
 - Hub(s)-4
- Storage Devices
 - EMC Symmetrix Disk Array
 - HP SureStore Virtual Array 7100
 - Unknown Device(s)
- NAS Devices
- Groups
- LUN Allocation
 - Share Groups
 - Associated LUN Groups
 - Host Groups

Storage Networks

Map List

Scale: 77%

Storage Events

Show All Use Filter Performance Edit Filter...

Displayed Events: 155 Total Events: 364 Details...

Severity	Occurred	Source	Message
Information	July 12, 2002 11:15:50 AM EDT	Performance	Data Collector started on Fri Jul 12 11:15:50 EDT 2002.
Information	July 12, 2002 12:28:54 PM EDT	Performance	Data Collector started on Fri Jul 12 12:28:54 EDT 2002.
Information	July 12, 2002 1:00:00 PM EDT	Performance	PM threshold exceeded on port 01 of emcsw2.phlx.com for PortTotalErrors
Information	July 12, 2002 1:00:03 PM EDT	Performance	PM threshold exceeded on port 01 of emcsw1.phlx.com for PortTotalErrors
Information	July 12, 2002 12:28:54 PM EDT	Performance	Data Collector started on Fri Jul 12 12:28:54 EDT 2002.
Information	July 12, 2002 1:00:00 PM EDT	Performance	PM threshold exceeded on port 01 of emcsw2.phlx.com for PortTotalErrors
Information	July 12, 2002 1:00:03 PM EDT	Performance	PM threshold exceeded on port 01 of emcsw1.phlx.com for PortTotalErrors
Information	July 12, 2002 2:00:02 PM EDT	Performance	PM threshold exceeded on port 01 of emcsw2.phlx.com for PortTotalErrors
Information	July 12, 2002 2:00:03 PM EDT	Performance	PM threshold exceeded on port 01 of emcsw2.phlx.com for PortTotalErrors

SAN-1 - hp OpenView storage area manager

File View Tools Help

PHLX

- Storage Networks
 - SAN-1
 - SAN-7
 - SAN-8
 - SAN-9
- Hosts
 - obpdev
 - obpsrv1
 - obpsrv2
 - ovo1.phlx.com
- Interconnect Devices
 - emcsw1.phlx.com
 - emcsw2.phlx.com
 - Hub(s)-2
 - Hub(s)-4
- Storage Devices
 - EMC Symmetrix Disk Array
 - HP SureStore Virtual Array 7100
 - Unknown Device(s)
- NAS Devices
- Groups
- LUN Allocation
 - Share Groups
 - Associated LUN Groups
 - Host Groups

Storage Network: SAN 1

Map | List | Capacity

Scale: 77%

Storage Events

Show All Use Filter Performance Edit Filter... Displayed Events: 155 Total Events: 354 Details...

Severity	Occurred	Source	Message
Information	July 12, 2002 11:15:50 AM EDT	Performance	Data Collector started on Fri Jul 12 11:15:50 EDT 2002.
Information	July 12, 2002 12:28:54 PM EDT	Performance	Data Collector started on Fri Jul 12 12:28:54 EDT 2002.
Information	July 12, 2002 1:00:00 PM EDT	Performance	PM threshold exceeded on port 01 of emcsw2.phlx.com for PortTotalErrors
Information	July 12, 2002 1:00:03 PM EDT	Performance	PM threshold exceeded on port 01 of emcsw1.phlx.com for PortTotalErrors
Information	July 12, 2002 12:28:54 PM EDT	Performance	Data Collector started on Fri Jul 12 12:28:54 EDT 2002.
Information	July 12, 2002 1:00:00 PM EDT	Performance	PM threshold exceeded on port 01 of emcsw2.phlx.com for PortTotalErrors
Information	July 12, 2002 1:00:03 PM EDT	Performance	PM threshold exceeded on port 01 of emcsw1.phlx.com for PortTotalErrors
Information	July 12, 2002 2:00:02 PM EDT	Performance	PM threshold exceeded on port 01 of emcsw2.phlx.com for PortTotalErrors
Information	July 12, 2002 2:00:03 PM EDT	Performance	PM threshold exceeded on port 01 of emcsw1.phlx.com for PortTotalErrors

SAN-7 - hp OpenView storage area manager

File View Tools Help

PHLX

- Storage Networks
 - SAN-1
 - SAN-7
 - SAN-8
 - Storage Network: SAN-8
- Hosts
 - obpdev
 - obpsrv1
 - obpsrv2
 - ovo1.phlx.com
- Interconnect Devices
 - emcsw1.phlx.com
 - emcsw2.phlx.com
 - Hub(s)-2
 - Hub(s)-4
- Storage Devices
 - EMC Symmetrix Disk Array
 - HP SureStore Virtual Array 7100
 - Unknown Device(s)
- NAS Devices
- Groups
- LUN Allocation
 - Share Groups
 - Associated LUN Groups
 - Host Groups

Storage Network: SAN 7

Map List Capacity

Scale: 77%

```

graph TD
    obpsrv1 --- Hub4[Hub(s)-4]
    obpsrv2 --- Hub4
    Hub4 --- EMC[EMC Symmetrix Disk Array]
  
```

Storage Events

Show All Use Filter Performance Edit Filter...

Displayed Events: 155 Total Events: 354 Details...

Severity	Occurred	Source	Message
Information	July 12, 2002 11:15:50 AM EDT	Performance	Data Collector started on Fri Jul 12 11:15:50 EDT 2002.
Information	July 12, 2002 12:28:54 PM EDT	Performance	Data Collector started on Fri Jul 12 12:28:54 EDT 2002.
Information	July 12, 2002 1:00:00 PM EDT	Performance	PM threshold exceeded on port 01 of emcsw2.phlx.com for PortTotalErrors
Information	July 12, 2002 1:00:03 PM EDT	Performance	PM threshold exceeded on port 01 of emcsw1.phlx.com for PortTotalErrors
Information	July 12, 2002 12:28:54 PM EDT	Performance	Data Collector started on Fri Jul 12 12:28:54 EDT 2002.
Information	July 12, 2002 1:00:00 PM EDT	Performance	PM threshold exceeded on port 01 of emcsw2.phlx.com for PortTotalErrors
Information	July 12, 2002 1:00:03 PM EDT	Performance	PM threshold exceeded on port 01 of emcsw1.phlx.com for PortTotalErrors
Information	July 12, 2002 2:00:02 PM EDT	Performance	PM threshold exceeded on port 01 of emcsw2.phlx.com for PortTotalErrors
Information	July 12, 2002 2:00:03 PM EDT	Performance	PM threshold exceeded on port 01 of emcsw1.phlx.com for PortTotalErrors

SAN-0 - hp OpenView storage area manager

File View Tools Help

PHLX

- Storage Networks
 - SAN-1
 - SAN-7
 - SAN-8**
 - SAN-9
- Hosts
 - obpdev
 - obpsrv1
 - obpsrv2
 - ovo1.phlx.com
- Interconnect Devices
 - emcsw1.phlx.com
 - emcsw2.phlx.com
 - Hub(s)-2
 - Hub(s)-4
- Storage Devices
 - EMC Symmetrix Disk Array
 - HP SureStore Virtual Array 7100
 - Unknown Device(s)
- NAS Devices
- Groups
- LUN Allocation
 - Share Groups
 - Associated LUN Groups
 - Host Groups

Storage Network: SAN-0

Map List Capacity

Scale: 100%

```

    graph TD
      obpsrv1[obpsrv1] --- emcsw2{emcsw2}
      obpsrv2[obpsrv2] --- emcsw2
  
```

Storage Events

Show All Use Filter Performance Edit Filter...

Displayed Events: 155 Total Events: 354 Details...

Severity	Occurred	Source	Message
Information	July 12, 2002 11:15:50 AM EDT	Performance	Data Collector started on Fri Jul 12 11:15:50 EDT 2002.
Information	July 12, 2002 12:28:54 PM EDT	Performance	Data Collector started on Fri Jul 12 12:28:54 EDT 2002.
Information	July 12, 2002 1:00:00 PM EDT	Performance	PM threshold exceeded on port 01 of emcsw2.phlx.com for PortTotalErrors
Information	July 12, 2002 1:00:03 PM EDT	Performance	PM threshold exceeded on port 01 of emcsw1.phlx.com for PortTotalErrors
Information	July 12, 2002 12:28:54 PM EDT	Performance	Data Collector started on Fri Jul 12 12:28:54 EDT 2002.
Information	July 12, 2002 1:00:00 PM EDT	Performance	PM threshold exceeded on port 01 of emcsw2.phlx.com for PortTotalErrors
Information	July 12, 2002 1:00:03 PM EDT	Performance	PM threshold exceeded on port 01 of emcsw1.phlx.com for PortTotalErrors
Information	July 12, 2002 2:00:02 PM EDT	Performance	PM threshold exceeded on port 01 of emcsw2.phlx.com for PortTotalErrors
Information	July 12, 2002 2:00:03 PM EDT	Performance	PM threshold exceeded on port 01 of emcsw1.phlx.com for PortTotalErrors

HP SAN-9 - hp OpenView storage area manager

File View Tools Help

PHLX

- Storage Networks
 - SAN-1
 - SAN-7
 - SAN-8
 - SAN-9**
- Hosts
 - obpdev
 - obpsrv1
 - obpsrv2
 - ovo1.phlx.com
- Interconnect Devices
 - emcsw1.phlx.com
 - emcsw2.phlx.com
 - Hub(s)-2
 - Hub(s)-4
- Storage Devices
 - EMC Symmetrix Disk Array
 - HP SureStore Virtual Array 7100
 - Unknown Device(s)
- NAS Devices
- Groups
- LUN Allocation
 - Share Groups
 - Associated LUN Groups
 - Host Groups

Storage Network: SAN 9

Map | List | Capacity

Scale: 100%

```

    graph TD
      obpsrv1[obpsrv1] --- hub(( ))
      obpsrv2[obpsrv2] --- hub
      hub --- emcsw1[emcsw1]
  
```

Storage Events

Show All Use Filter Performance Edit Filter... Displayed Events: 155 Total Events: 354 Details...

Severity	Occurred	Source	Message
Information	July 12, 2002 11:15:50 AM EDT	Performance	Data Collector started on Fri Jul 12 11:15:50 EDT 2002.
Information	July 12, 2002 12:28:54 PM EDT	Performance	Data Collector started on Fri Jul 12 12:28:54 EDT 2002.
Information	July 12, 2002 1:00:00 PM EDT	Performance	PM threshold exceeded on port 01 of emcsw2.phlx.com for PortTotalErrors
Information	July 12, 2002 1:00:03 PM EDT	Performance	PM threshold exceeded on port 01 of emcsw1.phlx.com for PortTotalErrors
Information	July 12, 2002 12:28:54 PM EDT	Performance	Data Collector started on Fri Jul 12 12:28:54 EDT 2002.
Information	July 12, 2002 1:00:00 PM EDT	Performance	PM threshold exceeded on port 01 of emcsw2.phlx.com for PortTotalErrors
Information	July 12, 2002 1:00:03 PM EDT	Performance	PM threshold exceeded on port 01 of emcsw1.phlx.com for PortTotalErrors
Information	July 12, 2002 2:00:02 PM EDT	Performance	PM threshold exceeded on port 01 of emcsw2.phlx.com for PortTotalErrors
Information	July 12, 2002 2:00:03 PM EDT	Performance	PM threshold exceeded on port 01 of emcsw1.phlx.com for PortTotalErrors

Hosts - hp OpenView storage area manager

File View Tools Help

PHLX

- Storage Networks
 - SAN-1
 - SAN-7
 - SAN-8
 - SAN-9
- obpdev
 - obpsrv1
 - obpsrv2
 - ovo1.phlx.com
- Interconnect Devices
 - emcsw1.phlx.com
 - emcsw2.phlx.com
 - Hub(s)-2
 - Hub(s)-4
- Storage Devices
 - EMC Symmetrix Disk Array
 - HP SureStore Virtual Array 7100
 - Unknown Device(s)
- NAS Devices
- Groups
- LUN Allocation
 - Share Groups
 - Associated LUN Groups
 - Host Groups

Hosts

List Capacity LUN Allocation Performance

Show group: All Groups

Host	Group	OS	Vendor	Model	Serial Number
obpdev		SunOS 5.8			030903b0
obpsrv1		SunOS 5.8			83074360
obpsrv2		SunOS 5.8			8307433c
ovo1.phlx.com		HP-UX B.11.11			1118404638

Storage Events Show All Use Filter Performance Displayed Events: 155 Total Events: 364

Severity	Occurred	Source	Message
Information	July 12, 2002 11:15:50 AM EDT	Performance	Data Collector started on Fri Jul 12 11:15:50 EDT 2002.
Information	July 12, 2002 12:28:54 PM EDT	Performance	Data Collector started on Fri Jul 12 12:28:54 EDT 2002.
Information	July 12, 2002 1:00:00 PM EDT	Performance	PM threshold exceeded on port 01 of emcsw2.phlx.com for PortTotalErrors
Information	July 12, 2002 1:00:03 PM EDT	Performance	PM threshold exceeded on port 01 of emcsw1.phlx.com for PortTotalErrors
Information	July 12, 2002 12:28:54 PM EDT	Performance	Data Collector started on Fri Jul 12 12:28:54 EDT 2002.
Information	July 12, 2002 1:00:00 PM EDT	Performance	PM threshold exceeded on port 01 of emcsw2.phlx.com for PortTotalErrors
Information	July 12, 2002 1:00:03 PM EDT	Performance	PM threshold exceeded on port 01 of emcsw1.phlx.com for PortTotalErrors
Information	July 12, 2002 2:00:02 PM EDT	Performance	PM threshold exceeded on port 01 of emcsw2.phlx.com for PortTotalErrors
Information	July 12, 2002 2:00:03 PM EDT	Performance	PM threshold exceeded on port 01 of emcsw1.phlx.com for PortTotalErrors

Disks - hp OpenView storage area manager

File View Tools Help

PHLX

- Storage Networks
 - SAN-1
 - SAN-7
 - SAN-8
 - SAN-9
- Hosts
 - obpdev
 - Directories
 - Disks**
 - HBA's
 - Users
 - Volumes
 - obpsrv1
 - obpsrv2
 - ovo1.phlx.com
- Interconnect Devices
 - emcsw1.phlx.com
 - emcsw2.phlx.com
 - Hub(s)-2
 - Hub(s)-4
- Storage Devices
 - EMC Symmetrix Disk Array
 - HP SureStore Virtual Array 7100
 - Unknown Device(s)
- NAS Devices

Disks on host obpdev

Capacity

Storage Device	Name	Capacity	Device File	Hardware Path	LUN id
Unknown De...	/devices/ssm@0...	200.15 GB	/devices/ssm@0...	11/238.0.0	HITACHI DF500F 0
Unknown De...	/devices/ssm@0...	16.87 GB	/devices/ssm@0...	102/0.0.0	FUJITSU MAN318...
Unknown De...	/devices/ssm@0...	16.87 GB	/devices/ssm@0...	102/64.0.0	FUJITSU MAN318...
Unknown De...	/devices/ssm@0...	33.92 GB	/devices/ssm@0...	50/0.0.0	FUJITSU MAN336...
Unknown De...	/devices/ssm@0...	33.92 GB	/devices/ssm@0...	50/0.1.0	FUJITSU MAN336...
Unknown De...	/devices/ssm@0...	33.92 GB	/devices/ssm@0...	50/0.2.0	FUJITSU MAN336...
Unknown De...	/devices/ssm@0...	33.92 GB	/devices/ssm@0...	50/0.3.0	FUJITSU MAN336...
Unknown De...	/devices/ssm@0...	33.92 GB	/devices/ssm@0...	50/0.4.0	FUJITSU MAN336...
Unknown De...	/devices/ssm@0...	33.92 GB	/devices/ssm@0...	50/0.5.0	FUJITSU MAN336...
Unknown De...	/devices/ssm@0...	33.92 GB	/devices/ssm@0...	50/256.0.0	FUJITSU MAN336...
Unknown De...	/devices/ssm@0...	33.92 GB	/devices/ssm@0...	50/256.1.0	FUJITSU MAN336...
Unknown De...	/devices/ssm@0...	33.92 GB	/devices/ssm@0...	50/256.2.0	FUJITSU MAN336...
Unknown De...	/devices/ssm@0...	33.92 GB	/devices/ssm@0...	50/256.3.0	FUJITSU MAN336...
Unknown De...	/devices/ssm@0...	33.92 GB	/devices/ssm@0...	50/256.4.0	FUJITSU MAN336...
Unknown De...	/devices/ssm@0...	33.92 GB	/devices/ssm@0...	50/256.5.0	FUJITSU MAN336...
Unknown De...	/devices/ssm@0...	0	/devices/ssm@0...	102/64.6.0	HP C5683A 0
Unknown De...	/devices/ssm@0...	0	/devices/ssm@0...	102/0.2.0	SUN D240 0
Unknown De...	/devices/ssm@0...	0	/devices/ssm@0...	102/64.3.0	SUN D240 0
Unknown De...	/devices/ssm@0...	0	/devices/ssm@0...	50/0.14.0	SYMBIOS D1000 0
Totals		640.91 GB			

Storage Events Show all Use filter Performance Displayed Events: 155 Total Events: 364

Severity	Occurred	Source	Message
Information	July 12, 2002 11:15:50 AM EDT	Performance	Data Collector started on Fri Jul 12 11:15:50 EDT 2002.
Information	July 12, 2002 12:28:54 PM EDT	Performance	Data Collector started on Fri Jul 12 12:28:54 EDT 2002.
Information	July 12, 2002 1:00:00 PM EDT	Performance	PM threshold exceeded on port 01 of emcsw2.phlx.com for PortTotalErrors
Information	July 12, 2002 1:00:03 PM EDT	Performance	PM threshold exceeded on port 01 of emcsw1.phlx.com for PortTotalErrors
Information	July 12, 2002 12:28:54 PM EDT	Performance	Data Collector started on Fri Jul 12 12:28:54 EDT 2002.
Information	July 12, 2002 1:00:00 PM EDT	Performance	PM threshold exceeded on port 01 of emcsw2.phlx.com for PortTotalErrors
Information	July 12, 2002 1:00:03 PM EDT	Performance	PM threshold exceeded on port 01 of emcsw1.phlx.com for PortTotalErrors
Information	July 12, 2002 2:00:02 PM EDT	Performance	PM threshold exceeded on port 01 of emcsw2.phlx.com for PortTotalErrors
Information	July 12, 2002 2:00:02 PM EDT	Performance	PM threshold exceeded on port 01 of emcsw2.phlx.com for PortTotalErrors

Disks - hp OpenView storage area manager

File View Tools Help

PHLX

- Storage Networks
 - SAN-1
 - SAN-7
 - SAN-8
 - SAN-9
- Hosts
 - obpdev
 - Directories
 - Disks
 - HBA's
 - Users
 - Volumes
 - obpsrv1
 - Directories
 - Disks
 - HBA's
 - Users
 - Volumes
 - obpsrv2
 - ovo1.phlx.com
- Interconnect Devices
 - emcsw1.phlx.com
 - emcsw2.phlx.com
 - Hub(s)-2
 - Hub(s)-4

Disks on host obpsrv1

Capacity

Storage Device	Name	Capacity	Device File	Hardware Path	LUN id
EMC Symme...	/devices/ssm@0...	8 MB	/devices/ssm@0...	11/246.20.0	000
EMC Symme...	/devices/ssm@0...	126.44 GB	/devices/ssm@0...	11/246.20.1	001
EMC Symme...	/devices/ssm@0...	126.44 GB	/devices/ssm@0...	11/246.20.2	00A
EMC Symme...	/devices/ssm@0...	8 MB	/devices/ssm@0...	11/246.21.0	000
EMC Symme...	/devices/ssm@0...	126.44 GB	/devices/ssm@0...	11/246.21.1	001
EMC Symme...	/devices/ssm@0...	126.44 GB	/devices/ssm@0...	11/246.21.2	00A
? Unknown De...	/devices/ssm@0...	16.87 GB	/devices/ssm@0...	102/0.0.0	FUJITSU MAN318...
? Unknown De...	/devices/ssm@0...	16.87 GB	/devices/ssm@0...	102/64.0.0	FUJITSU MAN318...
? Unknown De...	/devices/ssm@0...	33.92 GB	/devices/ssm@0...	50/64.0.0	FUJITSU MAN336...
? Unknown De...	/devices/ssm@0...	33.92 GB	/devices/ssm@0...	50/64.1.0	FUJITSU MAN336...
? Unknown De...	/devices/ssm@0...	33.92 GB	/devices/ssm@0...	50/64.2.0	FUJITSU MAN336...
? Unknown De...	/devices/ssm@0...	33.92 GB	/devices/ssm@0...	50/64.3.0	FUJITSU MAN336...
? Unknown De...	/devices/ssm@0...	33.92 GB	/devices/ssm@0...	50/64.4.0	FUJITSU MAN336...
? Unknown De...	/devices/ssm@0...	33.92 GB	/devices/ssm@0...	50/64.5.0	FUJITSU MAN336...
? Unknown De...	/devices/ssm@0...	33.92 GB	/devices/ssm@0...	50/128.0.0	FUJITSU MAN336...
? Unknown De...	/devices/ssm@0...	33.92 GB	/devices/ssm@0...	50/128.1.0	FUJITSU MAN336...
? Unknown De...	/devices/ssm@0...	33.92 GB	/devices/ssm@0...	50/128.2.0	FUJITSU MAN336...
? Unknown De...	/devices/ssm@0...	33.92 GB	/devices/ssm@0...	50/128.3.0	FUJITSU MAN336...
? Unknown De...	/devices/ssm@0...	33.92 GB	/devices/ssm@0...	50/128.4.0	FUJITSU MAN336...
Totals		946.56 GB			

Storage Events Show all Use filter Performance Displayed Events: 155 Total Events: 364

Severity	Occurred	Source	Message
Information	July 12, 2002 11:15:50 AM EDT	Performance	Data Collector started on Fri Jul 12 11:15:50 EDT 2002.
Information	July 12, 2002 12:28:54 PM EDT	Performance	Data Collector started on Fri Jul 12 12:28:54 EDT 2002.
Information	July 12, 2002 1:00:00 PM EDT	Performance	PM threshold exceeded on port 01 of emcsw2.phlx.com for PortTotalErrors
Information	July 12, 2002 1:00:03 PM EDT	Performance	PM threshold exceeded on port 01 of emcsw1.phlx.com for PortTotalErrors
Information	July 12, 2002 12:28:54 PM EDT	Performance	Data Collector started on Fri Jul 12 12:28:54 EDT 2002.
Information	July 12, 2002 1:00:00 PM EDT	Performance	PM threshold exceeded on port 01 of emcsw2.phlx.com for PortTotalErrors
Information	July 12, 2002 1:00:03 PM EDT	Performance	PM threshold exceeded on port 01 of emcsw1.phlx.com for PortTotalErrors
Information	July 12, 2002 2:00:02 PM EDT	Performance	PM threshold exceeded on port 01 of emcsw2.phlx.com for PortTotalErrors
Information	July 12, 2002 2:00:02 PM EDT	Performance	PM threshold exceeded on port 01 of emcsw2.phlx.com for PortTotalErrors

HPBAs - hp OpenView storage area manager

File View Tools Help

PHLX

- Storage Networks
 - SAN-1
 - SAN-7
 - SAN-8
 - SAN-9
- Hosts
 - obpdev
 - Directories
 - Disks
 - HBA's**
 - Users
 - Volumes
 - obpsrv1
 - Directories
 - Disks
 - HBA's
 - Users
 - Volumes
 - obpsrv2
 - ovo1.phlx.com
- Interconnect Devices
 - emcsw1.phlx.com
 - emcsw2.phlx.com
 - Hub(s)-2
 - Hub(s)-4

Host Bus Adapters in obpdev

List

- Emulex Network Systems
- SYMBIOS
- QLOGIC
- QLOGIC
- Emulex Network Systems
- SYMBIOS
- Emulex Network Systems
- SYMBIOS
- Emulex Network Systems
- SYMBIOS

Storage Events Show all Use filter Performance Edit Filters... Displayed Events: 155 Total Events: 364 Delete...

Severity	Occurred	Source	Message
Information	July 12, 2002 11:15:50 AM EDT	Performance	Data Collector started on Fri Jul 12 11:15:50 EDT 2002.
Information	July 12, 2002 12:28:54 PM EDT	Performance	Data Collector started on Fri Jul 12 12:28:54 EDT 2002.
Information	July 12, 2002 1:00:00 PM EDT	Performance	PM threshold exceeded on port 01 of emcsw2.phlx.com for PortTotalErrors
Information	July 12, 2002 1:00:03 PM EDT	Performance	PM threshold exceeded on port 01 of emcsw1.phlx.com for PortTotalErrors
Information	July 12, 2002 12:28:54 PM EDT	Performance	Data Collector started on Fri Jul 12 12:28:54 EDT 2002.
Information	July 12, 2002 1:00:00 PM EDT	Performance	PM threshold exceeded on port 01 of emcsw2.phlx.com for PortTotalErrors
Information	July 12, 2002 1:00:03 PM EDT	Performance	PM threshold exceeded on port 01 of emcsw1.phlx.com for PortTotalErrors
Information	July 12, 2002 2:00:02 PM EDT	Performance	PM threshold exceeded on port 01 of emcsw2.phlx.com for PortTotalErrors
Information	July 12, 2002 2:00:02 PM EDT	Performance	PM threshold exceeded on port 01 of emcsw2.phlx.com for PortTotalErrors

Emulex Network Systems - hp OpenView storage area manager

File View Tools Help

← → ↑ ↓ ↻ ↺ ↻ ↺

PHLX

- Storage Networks
 - SAN-1
 - SAN-7
 - SAN-8
 - SAN-9
- Hosts
 - obpdev
 - Directories
 - Disks
 - HBA's**
 - Users
 - Volumes
 - obpsrv1
 - Directories
 - Disks
 - HBA's
 - Users
 - Volumes
 - obpsrv2
 - ovo1.phlx.com
- Interconnect Devices
 - emcsw1.phlx.com
 - emcsw2.phlx.com
 - Hub(s)-2
 - Hub(s)-4

Host Bus Adapter: Emulex Network Systems

Properties Ports

Device Information

Name	Emulex Network Systems
Vendor	Emulex Network Systems
World Wide Name	20:00:00:c9:29:b4:f0
Serial Number	0000c929b4f0
<hr/>	
Status	Normal

Storage Events Show all Use filter Performance Edit Filters... Displayed Events: 155 Total Events: 364 Delete...

Severity	Occurred	Source	Message
Information	July 12, 2002 11:15:50 AM EDT	Performance	Data Collector started on Fri Jul 12 11:15:50 EDT 2002.
Information	July 12, 2002 12:28:54 PM EDT	Performance	Data Collector started on Fri Jul 12 12:28:54 EDT 2002.
Information	July 12, 2002 1:00:00 PM EDT	Performance	PM threshold exceeded on port 01 of emcsw2.phlx.com for PortTotalErrors
Information	July 12, 2002 1:00:03 PM EDT	Performance	PM threshold exceeded on port 01 of emcsw1.phlx.com for PortTotalErrors
Information	July 12, 2002 12:28:54 PM EDT	Performance	Data Collector started on Fri Jul 12 12:28:54 EDT 2002.
Information	July 12, 2002 1:00:00 PM EDT	Performance	PM threshold exceeded on port 01 of emcsw2.phlx.com for PortTotalErrors
Information	July 12, 2002 1:00:03 PM EDT	Performance	PM threshold exceeded on port 01 of emcsw1.phlx.com for PortTotalErrors
Information	July 12, 2002 2:00:02 PM EDT	Performance	PM threshold exceeded on port 01 of emcsw2.phlx.com for PortTotalErrors
Information	July 12, 2002 2:00:02 PM EDT	Performance	PM threshold exceeded on port 01 of emcsw2.phlx.com for PortTotalErrors

Emulex Network Systems - hp OpenView storage area manager

File View Tools Help

Storage Networks

- SAN-1
- SAN-7
- SAN-8
- SAN-9

Hosts

- obpdev
 - Directories
 - Disks
 - HBA's**
 - Users
 - Volumes
- obpsrv1
 - Directories
 - Disks
 - HBA's
 - Users
 - Volumes
- obpsrv2
- ovo1.phlx.com

Interconnect Devices

- emcsw1.phlx.com
- emcsw2.phlx.com
- Hub(s)-2
- Hub(s)-4

Host Bus Adapter: Emulex Network Systems

Properties Ports

Port #	Type	Subtype	Connection	World Wide Name
0 on Emulex Netw...	FC	NL-Port		10:00:00:00:c9:29:b4:f0

Storage Events Show all Use filter Performance Edit Filters... Displayed Events: 155 Total Events: 364 Delete...

Severity	Occurred	Source	Message
Information	July 12, 2002 11:15:50 AM EDT	Performance	Data Collector started on Fri Jul 12 11:15:50 EDT 2002.
Information	July 12, 2002 12:28:54 PM EDT	Performance	Data Collector started on Fri Jul 12 12:28:54 EDT 2002.
Information	July 12, 2002 1:00:00 PM EDT	Performance	PM threshold exceeded on port 01 of emcsw2.phlx.com for PortTotalErrors
Information	July 12, 2002 1:00:03 PM EDT	Performance	PM threshold exceeded on port 01 of emcsw1.phlx.com for PortTotalErrors
Information	July 12, 2002 12:28:54 PM EDT	Performance	Data Collector started on Fri Jul 12 12:28:54 EDT 2002.
Information	July 12, 2002 1:00:00 PM EDT	Performance	PM threshold exceeded on port 01 of emcsw2.phlx.com for PortTotalErrors
Information	July 12, 2002 1:00:03 PM EDT	Performance	PM threshold exceeded on port 01 of emcsw1.phlx.com for PortTotalErrors
Information	July 12, 2002 2:00:02 PM EDT	Performance	PM threshold exceeded on port 01 of emcsw2.phlx.com for PortTotalErrors
Information	July 12, 2002 2:00:02 PM EDT	Performance	PM threshold exceeded on port 01 of emcsw2.phlx.com for PortTotalErrors

Users - hp OpenView storage area manager

File View Tools Help

PHLX

- Storage Networks
 - SAN-1
 - SAN-7
 - SAN-8
 - SAN-9
- Hosts
 - obpdev
 - Directories
 - Disks
 - HBA's
 - Users
 - Volumes
 - obpsrv1
 - Directories
 - Disks
 - HBA's
 - Users
 - Volumes
 - obpsrv2
 - ovo1.phlx.com
- Interconnect Devices
 - emcsw1.phlx.com
 - emcsw2.phlx.com
 - Hub(s)-2
 - Hub(s)-4

Users on obpdev

Capacity

Show group: All Groups

User Name	Group	Used
noaccess		0
nobody		0
listen		0
nuucp		0
sys		0
nobody4		0
uucp		771.32 KB
adm		1.03 MB
lp		1.1 MB
daemon		24.16 MB
bin		506.04 MB
root		3.25 GB
eoops		10.93 GB
Totals		14.7 GB

Storage Events Show all Use filter Performance Edit Filters... Displayed Events: 155 Total Events: 364 Delete...

Severity	Occurred	Source	Message
Information	July 12, 2002 11:15:50 AM EDT	Performance	Data Collector started on Fri Jul 12 11:15:50 EDT 2002.
Information	July 12, 2002 12:28:54 PM EDT	Performance	Data Collector started on Fri Jul 12 12:28:54 EDT 2002.
Information	July 12, 2002 1:00:00 PM EDT	Performance	PM threshold exceeded on port 01 of emcsw2.phlx.com for PortTotalErrors
Information	July 12, 2002 1:00:03 PM EDT	Performance	PM threshold exceeded on port 01 of emcsw1.phlx.com for PortTotalErrors
Information	July 12, 2002 12:28:54 PM EDT	Performance	Data Collector started on Fri Jul 12 12:28:54 EDT 2002.
Information	July 12, 2002 1:00:00 PM EDT	Performance	PM threshold exceeded on port 01 of emcsw2.phlx.com for PortTotalErrors
Information	July 12, 2002 1:00:03 PM EDT	Performance	PM threshold exceeded on port 01 of emcsw1.phlx.com for PortTotalErrors
Information	July 12, 2002 2:00:02 PM EDT	Performance	PM threshold exceeded on port 01 of emcsw2.phlx.com for PortTotalErrors
Information	July 12, 2002 2:00:02 PM EDT	Performance	PM threshold exceeded on port 01 of emcsw2.phlx.com for PortTotalErrors

Users - hp OpenView storage area manager

File View Tools Help

PHLX

- Storage Networks
 - SAN-1
 - SAN-7
 - SAN-8
 - SAN-9
- Hosts
 - obpdev
 - Directories
 - Disks
 - HBA's
 - Users
 - Volumes
 - obpsrv1
 - Directories
 - Disks
 - HBA's
 - Users
 - Volumes
 - obpsrv2
 - ovo1.phlx.com
- Interconnect Devices
 - emcsw1.phlx.com
 - emcsw2.phlx.com
 - Hub(s)-2
 - Hub(s)-4

Users on obpdev

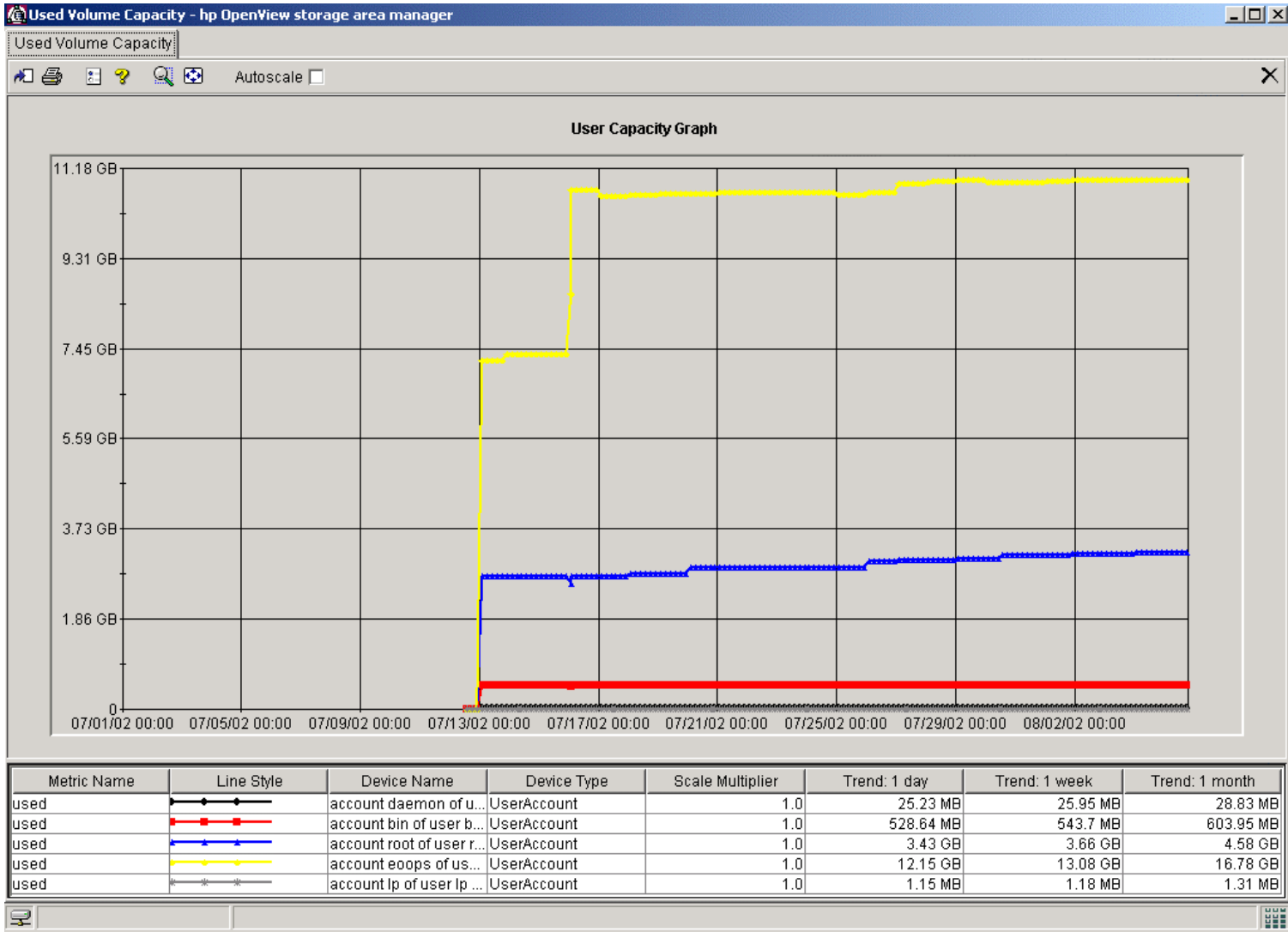
Capacity

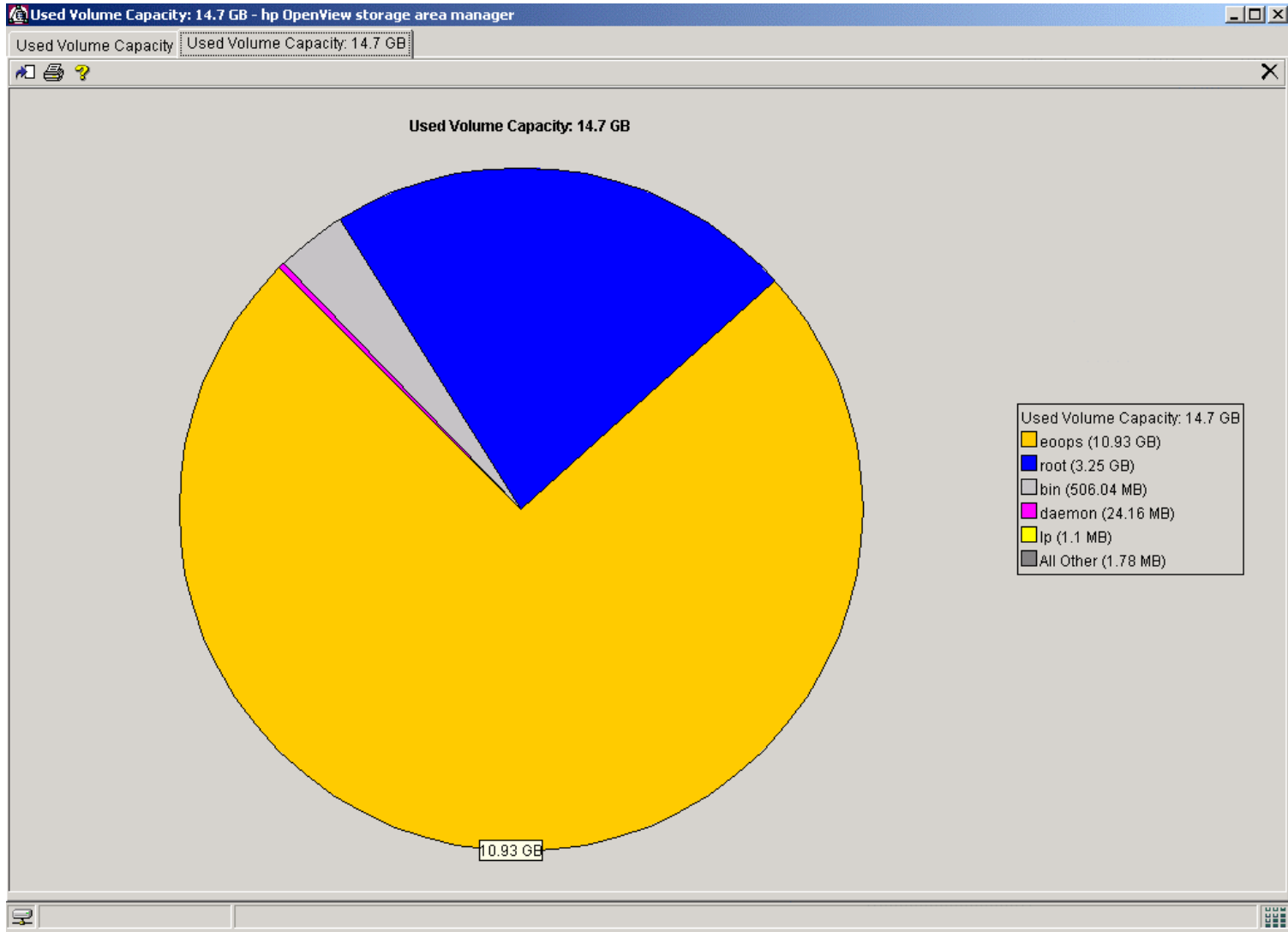
Show group All Groups

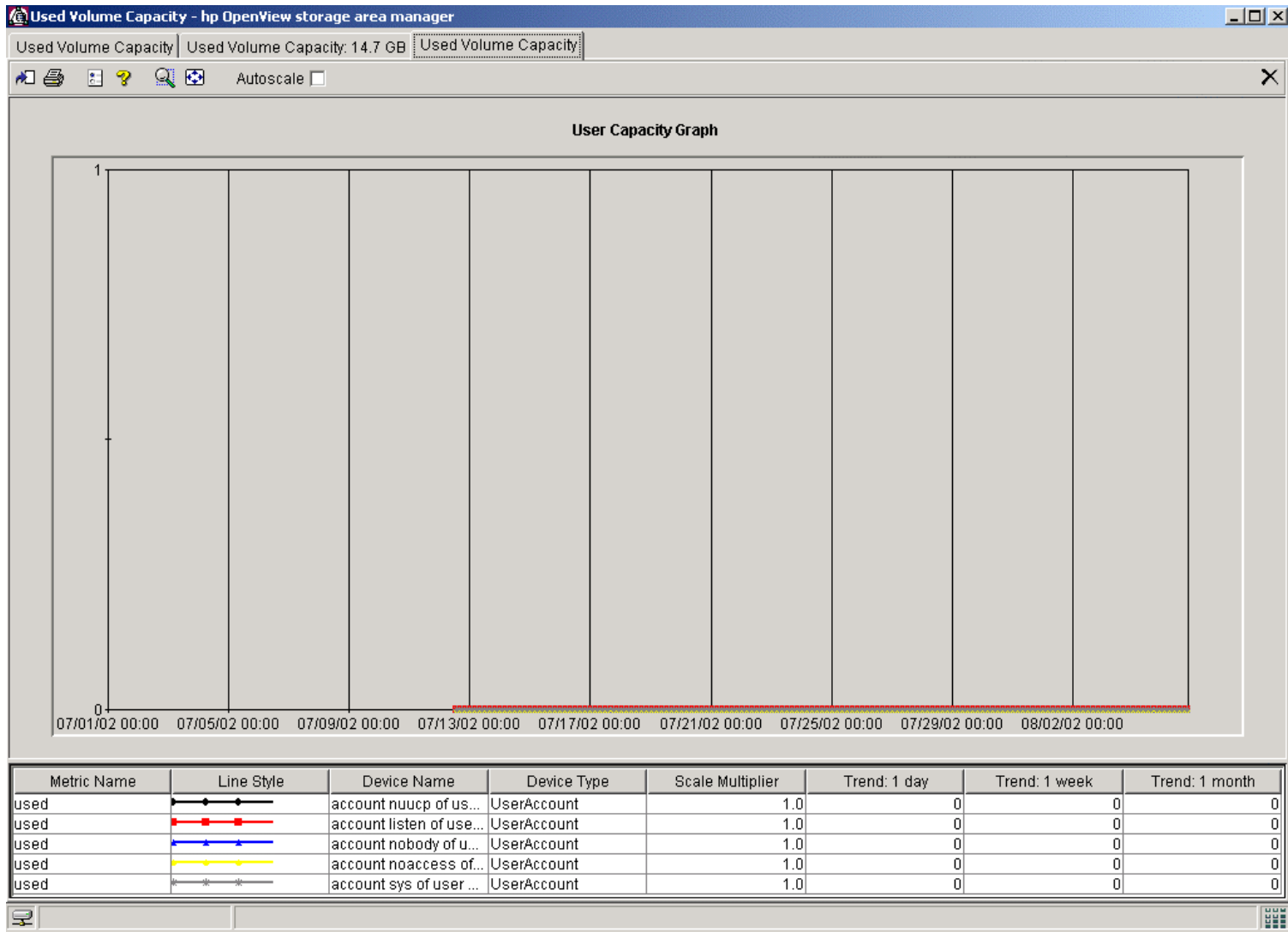
User Name	Group	Used
eoops		10.93 GB
root		3.25 GB
bin		506.04 MB
daemon		24.16 MB
lp		1.1 MB
adm		1.03 MB
uucp		771.32 KB
noaccess		0
nobody		0
listen		0
nuucp		0
sys		0
nobody4		0
Totals		14.7 GB

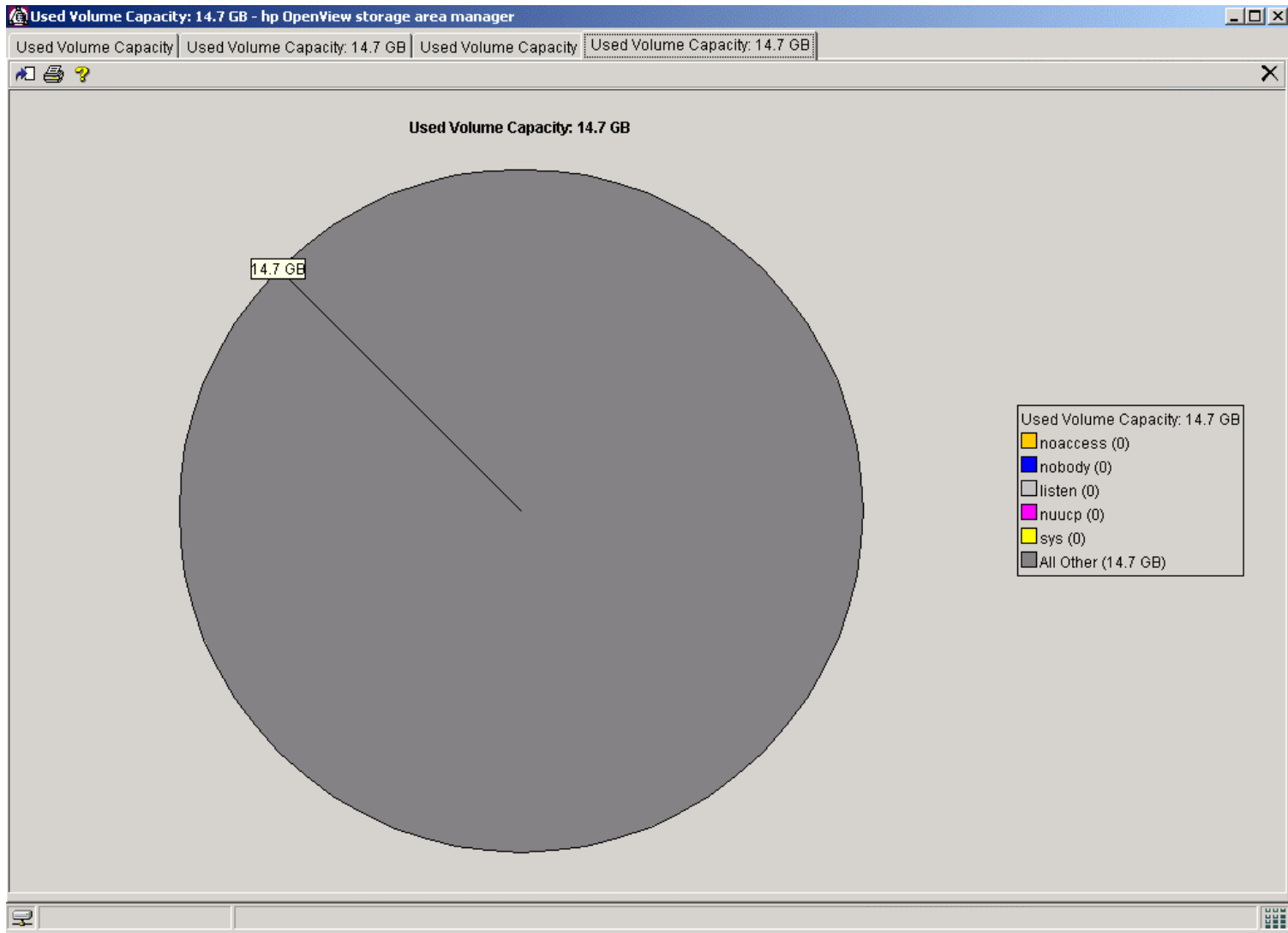
Storage Events Show all Use filter Performance Edit Filters... Displayed Events: 155 Total Events: 364 Delete...

Severity	Occurred	Source	Message
Information	July 12, 2002 11:15:50 AM EDT	Performance	Data Collector started on Fri Jul 12 11:15:50 EDT 2002.
Information	July 12, 2002 12:28:54 PM EDT	Performance	Data Collector started on Fri Jul 12 12:28:54 EDT 2002.
Information	July 12, 2002 1:00:00 PM EDT	Performance	PM threshold exceeded on port 01 of emcsw2.phlx.com for PortTotalErrors
Information	July 12, 2002 1:00:03 PM EDT	Performance	PM threshold exceeded on port 01 of emcsw1.phlx.com for PortTotalErrors
Information	July 12, 2002 12:28:54 PM EDT	Performance	Data Collector started on Fri Jul 12 12:28:54 EDT 2002.
Information	July 12, 2002 1:00:00 PM EDT	Performance	PM threshold exceeded on port 01 of emcsw2.phlx.com for PortTotalErrors
Information	July 12, 2002 1:00:03 PM EDT	Performance	PM threshold exceeded on port 01 of emcsw1.phlx.com for PortTotalErrors
Information	July 12, 2002 2:00:02 PM EDT	Performance	PM threshold exceeded on port 01 of emcsw2.phlx.com for PortTotalErrors
Information	July 12, 2002 2:00:02 PM EDT	Performance	PM threshold exceeded on port 01 of emcsw2.phlx.com for PortTotalErrors









Volumes - hp OpenView storage area manager

File View Tools Help

PHLX

- Storage Networks
 - SAN-1
 - SAN-7
 - SAN-8
 - SAN-9
- Hosts
 - obpdev
 - Directories
 - Disks
 - HBAs
 - Users
 - Volumes
 - obpsrv1
 - Directories
 - Disks
 - HBAs
 - Users
 - Volumes
 - obpsrv2
 - ov01.phlx.com
- Interconnect Devices
 - emcsw1.phlx.com
 - emcsw2.phlx.com
 - Hub(s)-2
 - Hub(s)-4

Volumes on obpdev

Capacity

Show group: All Groups

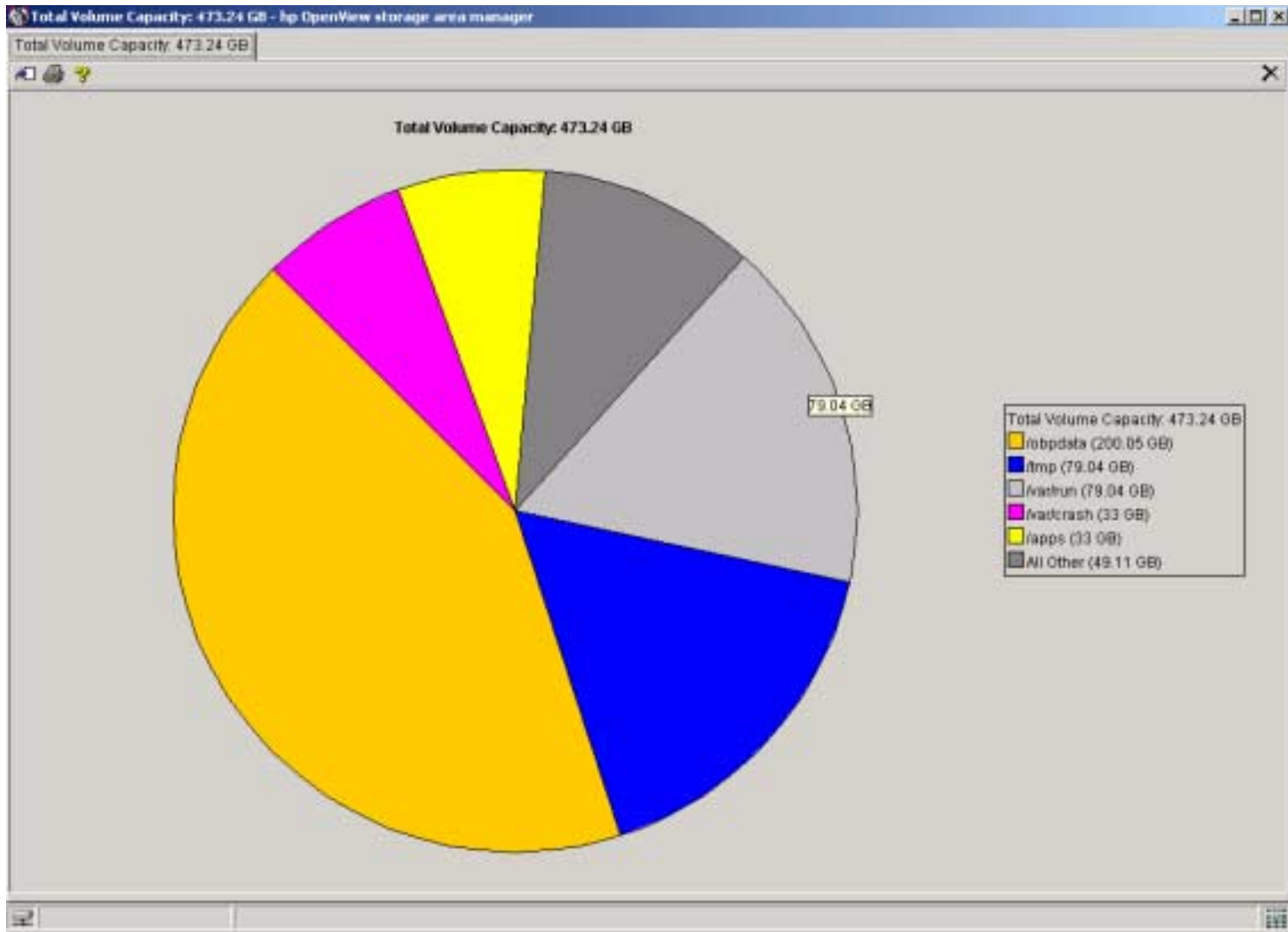
Volume	Host/NAS	Group	Total	Used	Free	Type	Usage %
/obpdata...	obpdev		200.05 GB	5.77 GB	192.14 GB	ufs	3%
/tmp on h...	obpdev		79.04 GB	168 KB	79.04 GB	tmpfs	0%
/var/run o...	obpdev		79.04 GB	16 KB	79.04 GB	tmpfs	0%
/var/crash...	obpdev		33 GB	1.47 GB	31.29 GB	ufs	4%
/apps on ...	obpdev		33 GB	17.25 MB	32.73 GB	ufs	0%
/var on ho...	obpdev		14.8 GB	2.35 GB	12.3 GB	ufs	16%
/export/ho...	obpdev		8 GB	3.88 GB	4.09 GB	ufs	48%
/obprog...	obpdev		8 GB	16.47 MB	7.92 GB	ufs	0%
/opt on ho...	obpdev		7.23 GB	1.59 GB	5.56 GB	ufs	22%
/usr on h...	obpdev		7.23 GB	922.82 MB	6.25 GB	ufs	13%
/ on host ...	obpdev		3.88 GB	98.5 MB	3.73 GB	ufs	3%
Totals			473.24 GB	16.09 GB	444.09 GB		3%

Storage Events

Show all Use filter Performance Edit Filter...

Displayed Events: 155 Total Events: 364 Details...

Severity	Occurred	Source	Message
Information	July 12, 2002 11:15:50 AM EDT	Performance	Data Collector started on Fri Jul 12 11:15:50 EDT 2002
Information	July 12, 2002 12:28:54 PM EDT	Performance	Data Collector started on Fri Jul 12 12:28:54 EDT 2002
Information	July 12, 2002 1:00:00 PM EDT	Performance	PM threshold exceeded on port 01 of emcsw2.phlx.com for PortTotalErrors
Information	July 12, 2002 1:00:03 PM EDT	Performance	PM threshold exceeded on port 01 of emcsw1.phlx.com for PortTotalErrors
Information	July 12, 2002 12:28:54 PM EDT	Performance	Data Collector started on Fri Jul 12 12:28:54 EDT 2002
Information	July 12, 2002 1:00:00 PM EDT	Performance	PM threshold exceeded on port 01 of emcsw2.phlx.com for PortTotalErrors
Information	July 12, 2002 1:00:03 PM EDT	Performance	PM threshold exceeded on port 01 of emcsw1.phlx.com for PortTotalErrors
Information	July 12, 2002 2:00:02 PM EDT	Performance	PM threshold exceeded on port 01 of emcsw2.phlx.com for PortTotalErrors
Information	July 12, 2002 2:00:03 PM EDT	Performance	PM threshold exceeded on port 01 of emcsw1.phlx.com for PortTotalErrors



Volumes - hp OpenView storage area manager

File View Tools Help

← → ↑ ↓ ↻ ↺ ↻ ↺

PHLX

- Storage Networks
 - SAN-1
 - SAN-7
 - SAN-8
 - SAN-9
- Hosts
 - obpdev
 - Directories
 - Disks
 - HBA's
 - Users
 - Volumes
 - obpsrv1
 - Directories
 - Disks
 - HBA's
 - Users
 - Volumes
 - obpsrv2
 - ovo1.phlx.com
- Interconnect Devices
 - emcsw1.phlx.com
 - emcsw2.phlx.com
 - Hub(s)-2
 - Hub(s)-4

Volumes on obpdev

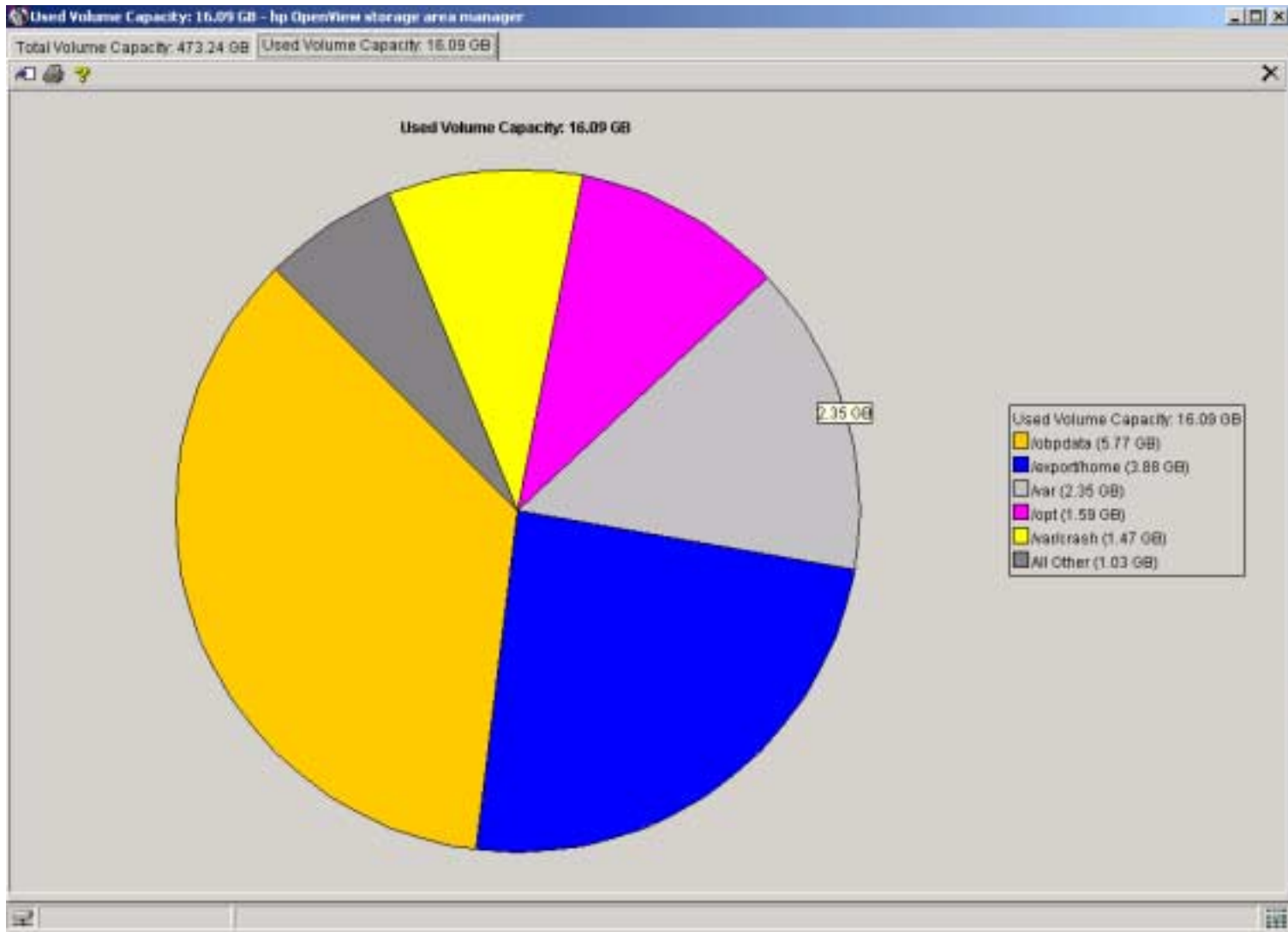
Capacity

Show group All Groups

Volume	Host / NAS	Group	Total	Used	Free	Type	Usage %
/obpdata ...	obpdev		200.05 GB	5.77 GB	182.14 GB	vxfs	3 %
/export/ho...	obpdev		8 GB	3.88 GB	4.09 GB	vxfs	49 %
/var on ho...	obpdev		14.8 GB	2.35 GB	12.3 GB	ufs	16 %
/opt on ho...	obpdev		7.23 GB	1.59 GB	5.56 GB	ufs	22 %
/var/crash...	obpdev		33 GB	1.47 GB	31.29 GB	vxfs	4 %
/usr on h...	obpdev		7.23 GB	922.62 MB	6.25 GB	ufs	13 %
/ on host ...	obpdev		3.86 GB	98.5 MB	3.73 GB	ufs	3 %
/apps on ...	obpdev		33 GB	17.25 MB	32.73 GB	vxfs	0 %
/obplogs ...	obpdev		8 GB	16.47 MB	7.92 GB	vxfs	0 %
/tmp on h...	obpdev		79.04 GB	168 KB	79.04 GB	tmpfs	0 %
/var/run o...	obpdev		79.04 GB	16 KB	79.04 GB	tmpfs	0 %
Totals			473.24 GB	16.09 GB	444.09 GB		3 %

Storage Events Show all Use filter Performance Edit Filters... Displayed Events: 155 Total Events: 364 Delete...

Severity	Occurred	Source	Message
Information	July 12, 2002 11:15:50 AM EDT	Performance	Data Collector started on Fri Jul 12 11:15:50 EDT 2002.
Information	July 12, 2002 12:28:54 PM EDT	Performance	Data Collector started on Fri Jul 12 12:28:54 EDT 2002.
Information	July 12, 2002 1:00:00 PM EDT	Performance	PM threshold exceeded on port 01 of emcsw2.phlx.com for PortTotalErrors
Information	July 12, 2002 1:00:03 PM EDT	Performance	PM threshold exceeded on port 01 of emcsw1.phlx.com for PortTotalErrors
Information	July 12, 2002 12:28:54 PM EDT	Performance	Data Collector started on Fri Jul 12 12:28:54 EDT 2002.
Information	July 12, 2002 1:00:00 PM EDT	Performance	PM threshold exceeded on port 01 of emcsw2.phlx.com for PortTotalErrors
Information	July 12, 2002 1:00:03 PM EDT	Performance	PM threshold exceeded on port 01 of emcsw1.phlx.com for PortTotalErrors
Information	July 12, 2002 2:00:02 PM EDT	Performance	PM threshold exceeded on port 01 of emcsw2.phlx.com for PortTotalErrors
Information	July 12, 2002 2:00:02 PM EDT	Performance	PM threshold exceeded on port 01 of emcsw2.phlx.com for PortTotalErrors



Volumes - hp OpenView storage area manager

File View Tools Help

← → ↑ ↓ ↻ ↺ ↻ ↺

PHLX

- Storage Networks
 - SAN-1
 - SAN-7
 - SAN-8
 - SAN-9
- Hosts
 - obpdev
 - Directories
 - Disks
 - HBA's
 - Users
 - Volumes
 - obpsrv1
 - Directories
 - Disks
 - HBA's
 - Users
 - Volumes
 - obpsrv2
 - ovo1.phlx.com
- Interconnect Devices
 - emcsw1.phlx.com
 - emcsw2.phlx.com
 - Hub(s)-2
 - Hub(s)-4

Volumes on obpdev

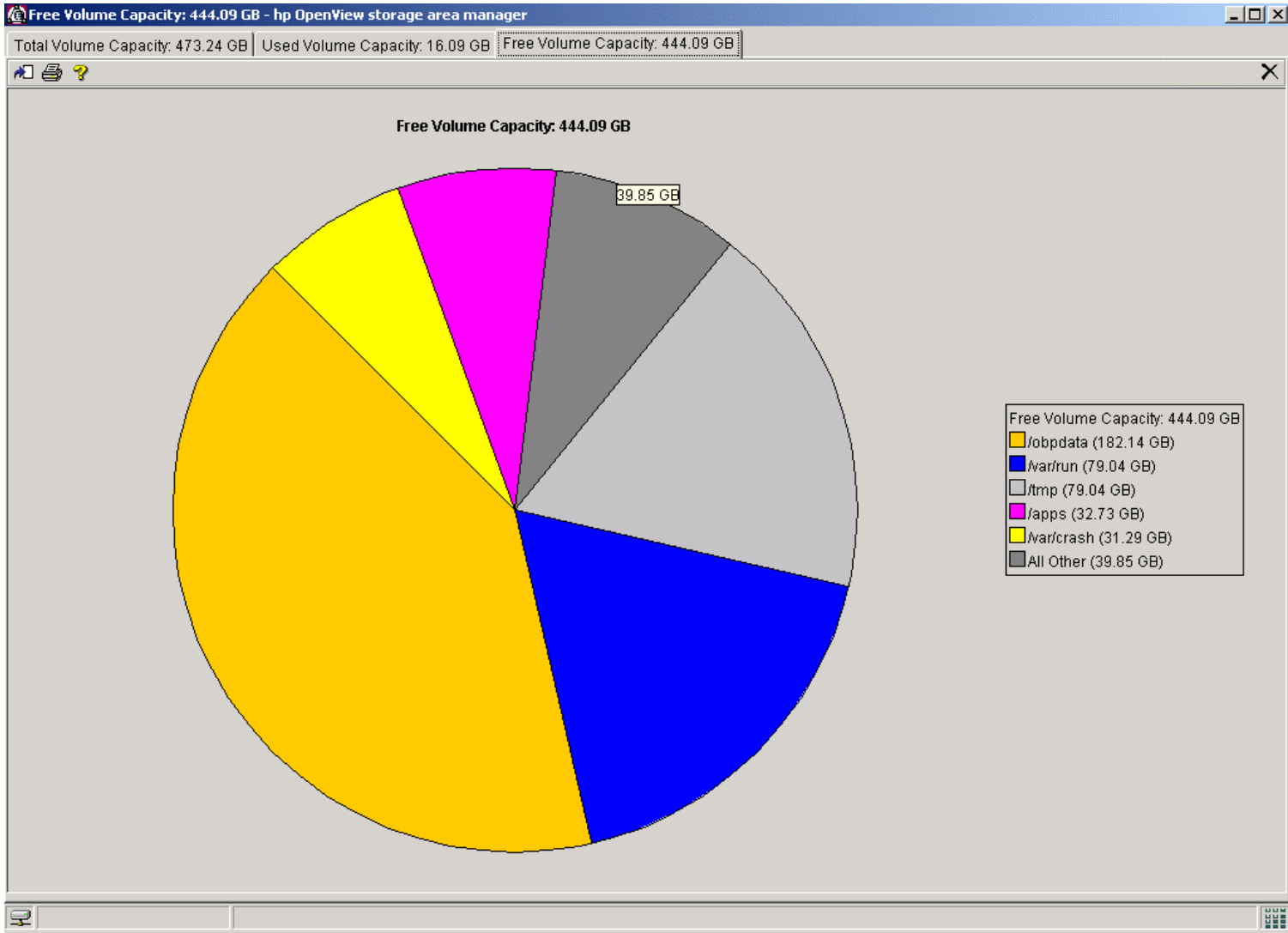
Capacity

Show group All Groups

Volume	Host / NAS	Group	Total	Used	Free	Type	Usage %
/obpdata ...	obpdev		200.05 GB	5.77 GB	182.14 GB	wxfs	3 %
/var/run o...	obpdev		79.04 GB	16 KB	79.04 GB	tmpfs	0 %
/tmp on h...	obpdev		79.04 GB	168 KB	79.04 GB	tmpfs	0 %
/apps on ...	obpdev		79.04 GB	17.25 MB	32.73 GB	wxfs	0 %
/var/crash...	obpdev		79.04 GB	1.47 GB	31.29 GB	wxfs	4 %
/var on ho...	obpdev		14.8 GB	2.35 GB	12.3 GB	ufs	16 %
/obplogs ...	obpdev		8 GB	16.47 MB	7.92 GB	wxfs	0 %
/usr on h...	obpdev		7.23 GB	922.62 MB	6.25 GB	ufs	13 %
/opt on ho...	obpdev		7.23 GB	1.59 GB	5.56 GB	ufs	22 %
/export/ho...	obpdev		8 GB	3.88 GB	4.09 GB	wxfs	49 %
/ on host ...	obpdev		3.86 GB	98.5 MB	3.73 GB	ufs	3 %
Totals			473.24 GB	16.09 GB	444.09 GB		3 %

Storage Events Show all Use filter Performance Edit Filters... Displayed Events: 155 Total Events: 364 Delete...

Severity	Occurred	Source	Message
Information	July 12, 2002 11:15:50 AM EDT	Performance	Data Collector started on Fri Jul 12 11:15:50 EDT 2002.
Information	July 12, 2002 12:28:54 PM EDT	Performance	Data Collector started on Fri Jul 12 12:28:54 EDT 2002.
Information	July 12, 2002 1:00:00 PM EDT	Performance	PM threshold exceeded on port 01 of emcsw2.phlx.com for PortTotalErrors
Information	July 12, 2002 1:00:03 PM EDT	Performance	PM threshold exceeded on port 01 of emcsw1.phlx.com for PortTotalErrors
Information	July 12, 2002 12:28:54 PM EDT	Performance	Data Collector started on Fri Jul 12 12:28:54 EDT 2002.
Information	July 12, 2002 1:00:00 PM EDT	Performance	PM threshold exceeded on port 01 of emcsw2.phlx.com for PortTotalErrors
Information	July 12, 2002 1:00:03 PM EDT	Performance	PM threshold exceeded on port 01 of emcsw1.phlx.com for PortTotalErrors
Information	July 12, 2002 2:00:02 PM EDT	Performance	PM threshold exceeded on port 01 of emcsw2.phlx.com for PortTotalErrors
Information	July 12, 2002 2:00:02 PM EDT	Performance	PM threshold exceeded on port 01 of emcsw2.phlx.com for PortTotalErrors



Directories - hp OpenView storage area manager

File View Tools Help

Managed Directories on ovo1.phlx.com

Managed Directories

Show group: All Groups

Directory Name	Group	Volume	SystemDevice	Used
/opt/OV on host ovo...		/opt on host ovo1.p...	ovo1.phlx.com	584.14 MB

Totals

584.14 MB

Add Directories... Remove Selected

Storage Events Show all Use filter Performance Edit Filters... Displayed Events: 155 Total Events: 364 Delete...

Severity	Occurred	Source	Message
Information	July 12, 2002 11:15:50 AM EDT	Performance	Data Collector started on Fri Jul 12 11:15:50 EDT 2002.
Information	July 12, 2002 12:28:54 PM EDT	Performance	Data Collector started on Fri Jul 12 12:28:54 EDT 2002.
Information	July 12, 2002 1:00:00 PM EDT	Performance	PM threshold exceeded on port 01 of emcsw2.phlx.com for PortTotalErrors
Information	July 12, 2002 1:00:03 PM EDT	Performance	PM threshold exceeded on port 01 of emcsw1.phlx.com for PortTotalErrors
Information	July 12, 2002 12:28:54 PM EDT	Performance	Data Collector started on Fri Jul 12 12:28:54 EDT 2002.
Information	July 12, 2002 1:00:00 PM EDT	Performance	PM threshold exceeded on port 01 of emcsw2.phlx.com for PortTotalErrors
Information	July 12, 2002 1:00:03 PM EDT	Performance	PM threshold exceeded on port 01 of emcsw1.phlx.com for PortTotalErrors
Information	July 12, 2002 2:00:02 PM EDT	Performance	PM threshold exceeded on port 01 of emcsw2.phlx.com for PortTotalErrors
Information	July 12, 2002 2:00:02 PM EDT	Performance	PM threshold exceeded on port 01 of emcsw2.phlx.com for PortTotalErrors

emcsw1.phlx.com - hp OpenView storage area manager

File View Tools Help

Switch: emcsw1.phlx.com


Properties Ports Performance PortPart Mgmt. Paths

Device Information

Name	emcsw1.phlx.com
Product Name	Silkworm 3800 2Gb FC Switch
Vendor	Brocade
Model	BR3800
Unique Instance ID	192.9.201.55
Serial Number	10-00-00-60-69-50-0d-87
IP Address	192.9.201.55
Status	Normal

Facilitates Storage Networks

- SAN-9



Storage Events Show All Use Filter Performance Edit Filter... Displayed Events: 155 Total Events: 364 Details...

Severity	Occurred	Source	Message
Information	July 12, 2002 11:15:50 AM EDT	Performance	Data Collector started on Fri Jul 12 11:15:50 EDT 2002.
Information	July 12, 2002 12:28:54 PM EDT	Performance	Data Collector started on Fri Jul 12 12:28:54 EDT 2002.
Information	July 12, 2002 1:00:00 PM EDT	Performance	PM threshold exceeded on port 01 of emcsw2.phlx.com for PortTotalErrors
Information	July 12, 2002 1:00:03 PM EDT	Performance	PM threshold exceeded on port 01 of emcsw1.phlx.com for PortTotalErrors
Information	July 12, 2002 12:28:54 PM EDT	Performance	Data Collector started on Fri Jul 12 12:28:54 EDT 2002.
Information	July 12, 2002 1:00:00 PM EDT	Performance	PM threshold exceeded on port 01 of emcsw2.phlx.com for PortTotalErrors
Information	July 12, 2002 1:00:03 PM EDT	Performance	PM threshold exceeded on port 01 of emcsw1.phlx.com for PortTotalErrors
Information	July 12, 2002 2:00:02 PM EDT	Performance	PM threshold exceeded on port 01 of emcsw2.phlx.com for PortTotalErrors
Information	July 12, 2002 2:00:03 PM EDT	Performance	PM threshold exceeded on port 01 of emcsw1.phlx.com for PortTotalErrors

emcsw1.phlx.com - hp OpenView storage area manager

File View Tools Help

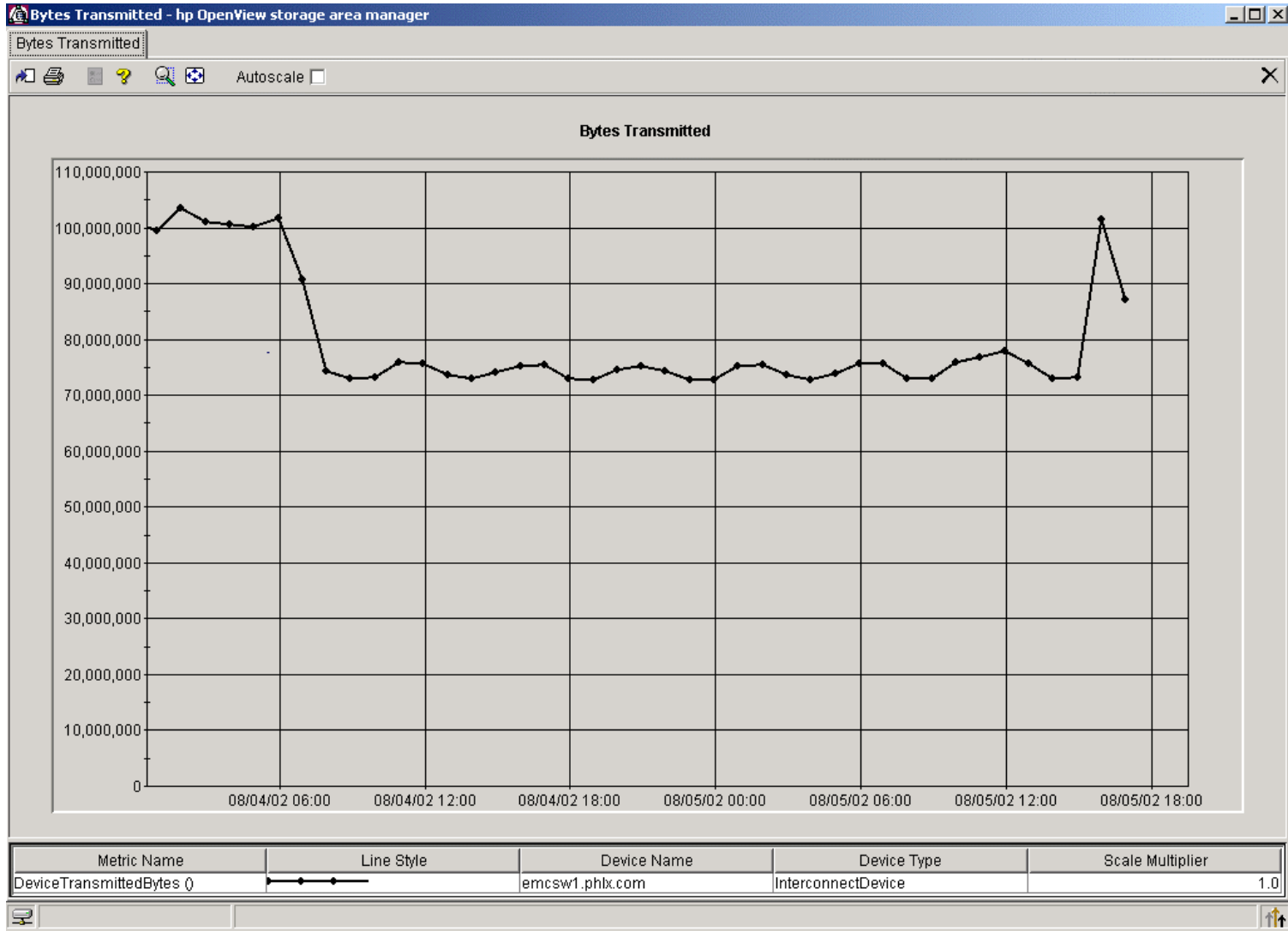
Switch: emcsw1.phlx.com

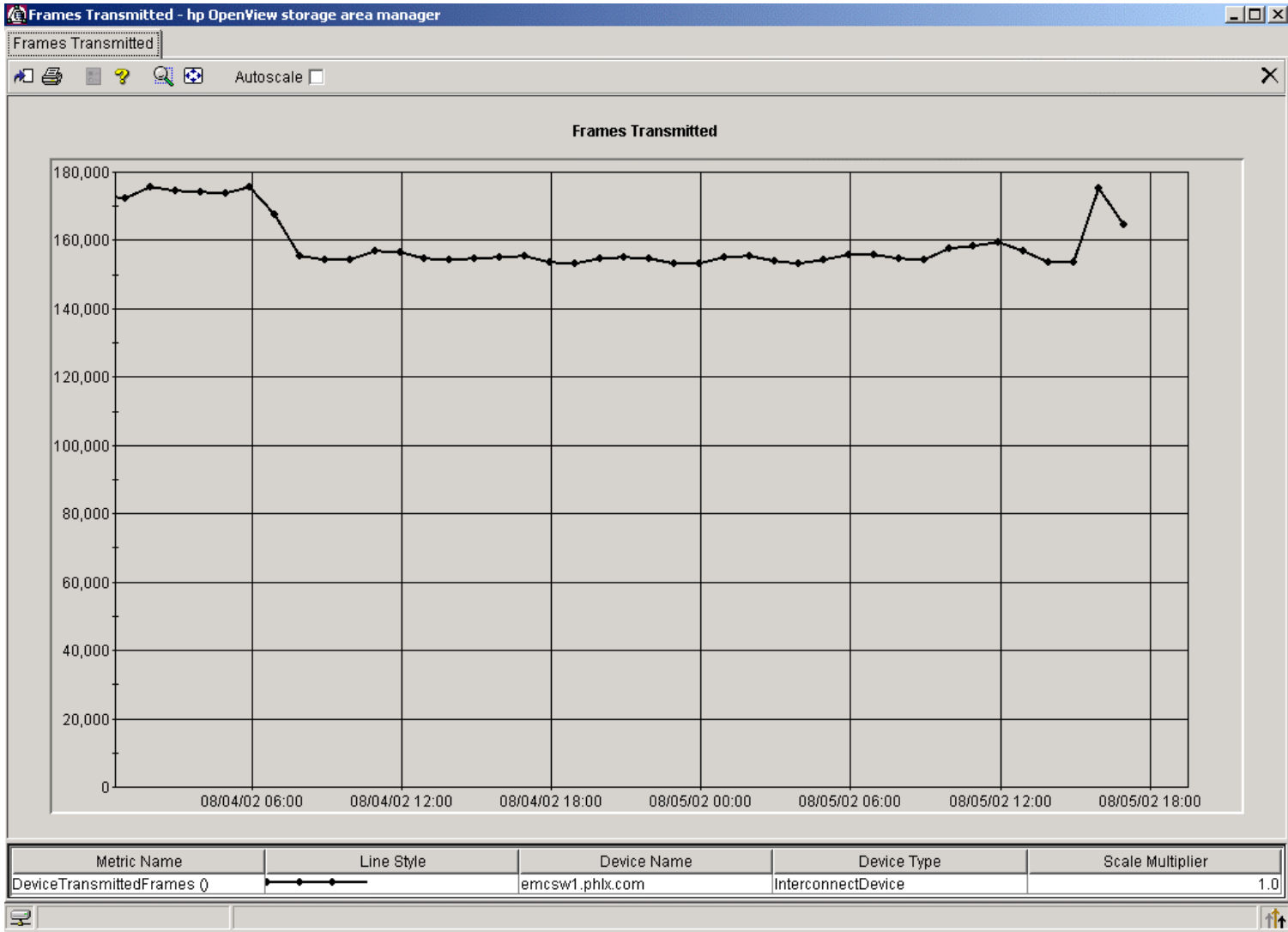
Properties Ports Performance PortPart Mgmt. Paths

Port #	Type	Subtype	Connection	World Wide Name
00 on emcsw1.phlx.com	FC	F-Port	0 on Emulex Netwo...	200000:60:69:50:0d:87
01 on emcsw1.phlx.com	FC	F-Port	0 on Emulex Netwo...	200100:60:69:50:0d:87
02 on emcsw1.phlx.com	FC	F-Port	0 on Emulex Netwo...	200200:60:69:50:0d:87
03 on emcsw1.phlx.com	FC	F-Port		200300:60:69:50:0d:87
04 on emcsw1.phlx.com	FC	F-Port		200400:60:69:50:0d:87
05 on emcsw1.phlx.com	FC	F-Port		200500:60:69:50:0d:87
06 on emcsw1.phlx.com	FC	F-Port		200600:60:69:50:0d:87
07 on emcsw1.phlx.com	FC	F-Port		200700:60:69:50:0d:87
08 on emcsw1.phlx.com	FC	F-Port		200800:60:69:50:0d:87
09 on emcsw1.phlx.com	FC	F-Port		200900:60:69:50:0d:87
10 on emcsw1.phlx.com	FC	F-Port		200a00:60:69:50:0d:87
11 on emcsw1.phlx.com	FC	F-Port		200b00:60:69:50:0d:87
12 on emcsw1.phlx.com	FC	F-Port		200c00:60:69:50:0d:87
13 on emcsw1.phlx.com	FC	F-Port		200d00:60:69:50:0d:87
14 on emcsw1.phlx.com	FC	F-Port		200e00:60:69:50:0d:87
15 on emcsw1.phlx.com	FC	F-Port		200f00:60:69:50:0d:87

Storage Events Show All Use Filter Performance Edit Filter... Displayed Events: 155 Total Events: 354 Details...

Severity	Occurred	Source	Message
Information	July 12, 2002 11:15:50 AM EDT	Performance	Data Collector started on Fri Jul 12 11:15:50 EDT 2002
Information	July 12, 2002 12:28:54 PM EDT	Performance	Data Collector started on Fri Jul 12 12:28:54 EDT 2002
Information	July 12, 2002 1:00:00 PM EDT	Performance	PM threshold exceeded on port 01 of emcsw2.phlx.com for PortTotalErrors
Information	July 12, 2002 1:00:03 PM EDT	Performance	PM threshold exceeded on port 01 of emcsw1.phlx.com for PortTotalErrors
Information	July 12, 2002 12:28:54 PM EDT	Performance	Data Collector started on Fri Jul 12 12:28:54 EDT 2002
Information	July 12, 2002 1:00:00 PM EDT	Performance	PM threshold exceeded on port 01 of emcsw2.phlx.com for PortTotalErrors
Information	July 12, 2002 1:00:03 PM EDT	Performance	PM threshold exceeded on port 01 of emcsw1.phlx.com for PortTotalErrors
Information	July 12, 2002 2:00:02 PM EDT	Performance	PM threshold exceeded on port 01 of emcsw2.phlx.com for PortTotalErrors
Information	July 12, 2002 2:00:03 PM EDT	Performance	PM threshold exceeded on port 01 of emcsw1.phlx.com for PortTotalErrors





emcsw1.phlx.com - hp OpenView storage area manager

File View Tools Help

Switch: emcsw1.phlx.com

Properties | Ports | Performance | Port Perf | Mgmt. Paths

Period: 07/22/02 19:00 — 08/05/02 19:00

Name	PortTransmittedBytes
00 on emcsw1.phlx.com	17,196,170,726.00
01 on emcsw1.phlx.com	29,061,737,373.00
02 on emcsw1.phlx.com	0.00
03 on emcsw1.phlx.com	0.00
04 on emcsw1.phlx.com	0.00
05 on emcsw1.phlx.com	0.00
06 on emcsw1.phlx.com	0.00
07 on emcsw1.phlx.com	0.00
08 on emcsw1.phlx.com	0.00
09 on emcsw1.phlx.com	0.00
10 on emcsw1.phlx.com	0.00
11 on emcsw1.phlx.com	0.00
12 on emcsw1.phlx.com	0.00
13 on emcsw1.phlx.com	0.00
14 on emcsw1.phlx.com	3,925,535,071.00
15 on emcsw1.phlx.com	2,761,410,858.00

Storage Events Show All Use Filter Performance Displayed Events: 155 Total Events: 364

Severity	Occurred	Source	Message
Information	July 12, 2002 11:15:50 AM EDT	Performance	Data Collector started on Fri Jul 12 11:15:50 EDT 2002
Information	July 12, 2002 12:28:54 PM EDT	Performance	Data Collector started on Fri Jul 12 12:28:54 EDT 2002
Information	July 12, 2002 1:00:00 PM EDT	Performance	PM threshold exceeded on port 01 of emcsw2.phlx.com for PortTotalErrors
Information	July 12, 2002 1:00:03 PM EDT	Performance	PM threshold exceeded on port 01 of emcsw1.phlx.com for PortTotalErrors
Information	July 12, 2002 12:28:54 PM EDT	Performance	Data Collector started on Fri Jul 12 12:28:54 EDT 2002
Information	July 12, 2002 1:00:00 PM EDT	Performance	PM threshold exceeded on port 01 of emcsw2.phlx.com for PortTotalErrors
Information	July 12, 2002 1:00:03 PM EDT	Performance	PM threshold exceeded on port 01 of emcsw1.phlx.com for PortTotalErrors
Information	July 12, 2002 2:00:02 PM EDT	Performance	PM threshold exceeded on port 01 of emcsw2.phlx.com for PortTotalErrors
Information	July 12, 2002 2:00:03 PM EDT	Performance	PM threshold exceeded on port 01 of emcsw1.phlx.com for PortTotalErrors

EMC Symmetrix Disk Array - hp OpenView storage area manager

File View Tools Help

Left Panel (Tree View):

- Disks
- HBAs
- Users
- Volumes
- ovo1.phlx.com
 - Directories
 - Disks
 - HBAs
 - Users
 - Volumes
- Interconnect Devices
 - emcsw1.phlx.com
 - emcsw2.phlx.com
 - Hub(s)-2
 - Hub(s)-4
- Storage Devices
 - EMC Symmetrix Disk Array**
 - HP SureStore Virtual Array 7100
 - Unknown Device(s)
- NAS Devices
- Groups
- LUN Allocation
 - Share Groups
 - Associated LUN Groups
 - Host Groups
 - LUN Groups

Right Panel: Disk Array: EMC Symmetrix Disk Array

Properties | Capacity | Hosts | Performance | Mgmt Paths

Device Information

Name	EMC Symmetrix Disk Array
Product Name	EMC Symmetrix Model 8430
Vendor	EMC
Model	SYMMETRIX
Product Revision	5567
Unique Instance ID	EMCSYMMETRIX500374
Serial Number	000104500374
Status	Normal

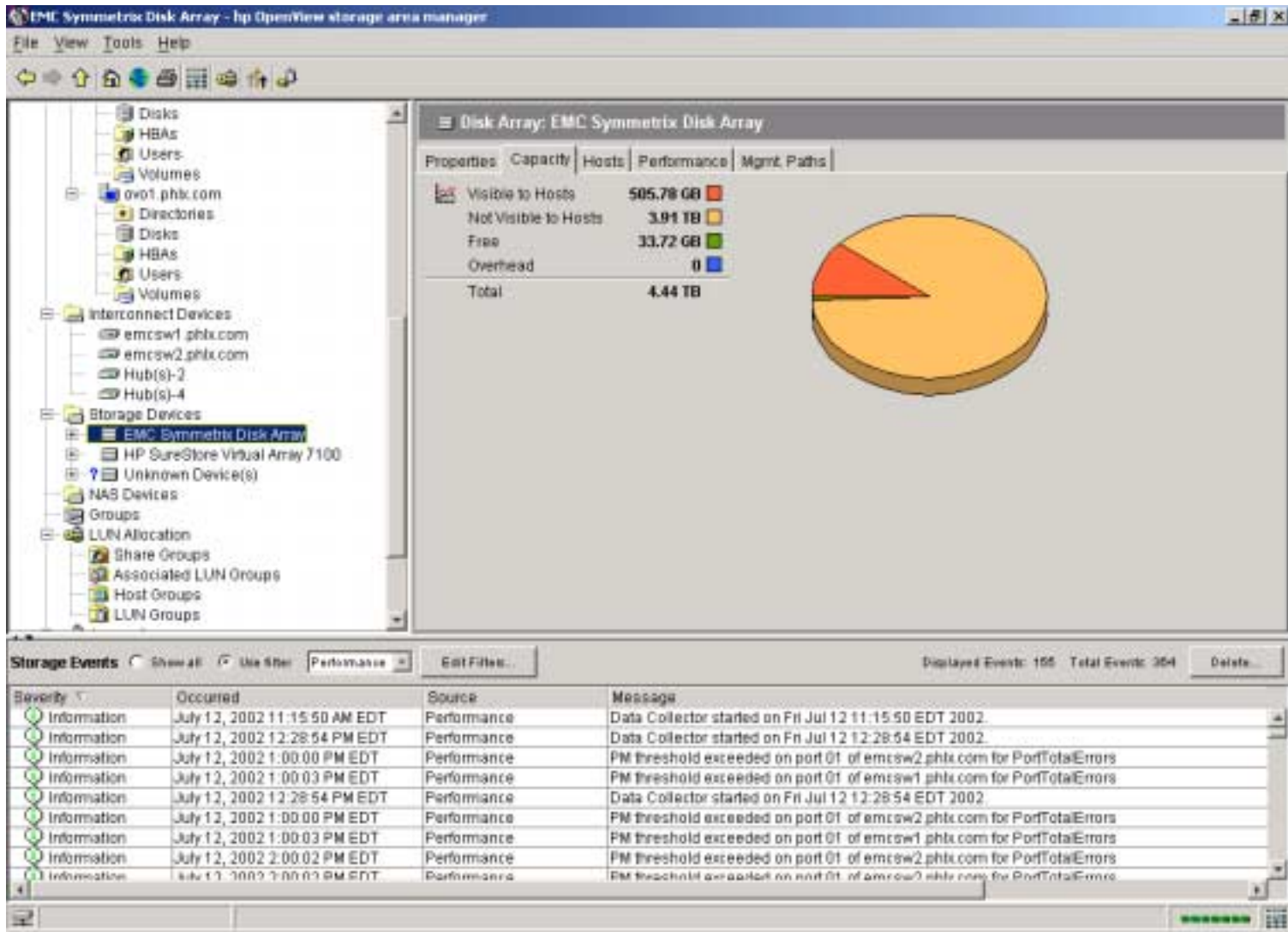
Member of Storage Networks

- BAN-7

Storage Events

Show All Use Filter Performance Edit Filter... Displayed Events: 155 Total Events: 354 Details...

Severity	Occurred	Source	Message
Information	July 12, 2002 11:15:50 AM EDT	Performance	Data Collector started on Fri Jul 12 11:15:50 EDT 2002
Information	July 12, 2002 12:28:54 PM EDT	Performance	Data Collector started on Fri Jul 12 12:28:54 EDT 2002
Information	July 12, 2002 1:00:00 PM EDT	Performance	PM threshold exceeded on port 01 of emcsw2.phlx.com for PortTotalErrors
Information	July 12, 2002 1:00:03 PM EDT	Performance	PM threshold exceeded on port 01 of emcsw1.phlx.com for PortTotalErrors
Information	July 12, 2002 12:28:54 PM EDT	Performance	Data Collector started on Fri Jul 12 12:28:54 EDT 2002
Information	July 12, 2002 1:00:00 PM EDT	Performance	PM threshold exceeded on port 01 of emcsw2.phlx.com for PortTotalErrors
Information	July 12, 2002 1:00:03 PM EDT	Performance	PM threshold exceeded on port 01 of emcsw1.phlx.com for PortTotalErrors
Information	July 12, 2002 2:00:02 PM EDT	Performance	PM threshold exceeded on port 01 of emcsw2.phlx.com for PortTotalErrors
Information	July 12, 2002 2:00:03 PM EDT	Performance	PM threshold exceeded on port 01 of emcsw1.phlx.com for PortTotalErrors



EMC Symmetrix Disk Array - hp OpenView storage area manager

File View Tools Help

← → ↑ ↓ ↻ ↺ ↻ ↺ ↻ ↺

Disks
 HBAs
 Users
 Volumes
 ovo1.phlx.com
 Directories
 Disks
 HBAs
 Users
 Volumes
 Interconnect Devices
 emcsw1.phlx.com
 emcsw2.phlx.com
 Hub(s)-2
 Hub(s)-4
 Storage Devices
EMC Symmetrix Disk Array
 HP SureStore Virtual Array 7100
 Unknown Device(s)
 NAS Devices
 Groups
 LUN Allocation
 Share Groups
 Associated LUN Groups
 Host Groups
 LUN Groups

EMC Symmetrix Disk Array
 Properties | Capacity | Hosts | Performance | Mgmt Paths
 Number of hosts: 2

host	Size	System Type
< tree >		33.72 GB
obpsrv2	252.89 GB	SunOS
obpsrv1	252.89 GB	SunOS
< unknown >		3.91 TB

Storage Events Show All Use Filter Performance Edit Filter... Displayed Events: 155 Total Events: 354 Details...

Severity	Occurred	Source	Message
Information	July 12, 2002 11:15:50 AM EDT	Performance	Data Collector started on Fri Jul 12 11:15:50 EDT 2002.
Information	July 12, 2002 12:28:54 PM EDT	Performance	Data Collector started on Fri Jul 12 12:28:54 EDT 2002.
Information	July 12, 2002 1:00:00 PM EDT	Performance	PM threshold exceeded on port 01 of emcsw2.phlx.com for PortTotalErrors
Information	July 12, 2002 1:00:03 PM EDT	Performance	PM threshold exceeded on port 01 of emcsw1.phlx.com for PortTotalErrors
Information	July 12, 2002 12:28:54 PM EDT	Performance	Data Collector started on Fri Jul 12 12:28:54 EDT 2002.
Information	July 12, 2002 1:00:00 PM EDT	Performance	PM threshold exceeded on port 01 of emcsw2.phlx.com for PortTotalErrors
Information	July 12, 2002 1:00:03 PM EDT	Performance	PM threshold exceeded on port 01 of emcsw1.phlx.com for PortTotalErrors
Information	July 12, 2002 2:00:02 PM EDT	Performance	PM threshold exceeded on port 01 of emcsw2.phlx.com for PortTotalErrors
Information	July 12, 2002 2:00:03 PM EDT	Performance	PM threshold exceeded on port 01 of emcsw1.phlx.com for PortTotalErrors

EMC Symmetrix Disk Array - hp OpenView storage area manager

File View Tools Help

← → ↑ ↓ ↻ ↺ ↻ ↺ ↻ ↺

- Disks
- HBAs
- Users
- Volumes
 - ovo1.phlx.com
 - Directories
 - Disks
 - HBAs
 - Users
 - Volumes
- Interconnect Devices
 - emcsw1.phlx.com
 - emcsw2.phlx.com
 - Hub(s)-2
 - Hub(s)-4
- Storage Devices
 - EMC Symmetrix Disk Array
 - HP SureStore Virtual Array 7100
 - Unknown Device(s)
- NAS Devices
- Groups
- LUN Allocation
 - Share Groups
 - Associated LUN Groups
 - Host Groups
 - LUN Groups

EMC Symmetrix Disk Array

Properties Capacity Hosts Performance Mgmt Paths

Path Status	Path	Host
Up	SCSI192.9.201.257\devices\scsm@0.0pci@1c,600000\pfc@1/sd@14,0.c.raw	obpsrv1
Up	SCSI192.9.201.257\devices\scsm@0.0pci@1c,600000\pfc@1/sd@14,1.c.raw	obpsrv1
Up	SCSI192.9.201.257\devices\scsm@0.0pci@1c,600000\pfc@1/sd@14,2.c.raw	obpsrv1
Up	SCSI192.9.201.257\devices\scsm@0.0pci@1e,600000\pfc@1/sd@15,0.c.raw	obpsrv1
Up	SCSI192.9.201.257\devices\scsm@0.0pci@1e,600000\pfc@1/sd@15,1.c.raw	obpsrv1
Up	SCSI192.9.201.257\devices\scsm@0.0pci@1e,600000\pfc@1/sd@15,2.c.raw	obpsrv1
Up	SCSI192.9.201.267\devices\scsm@0.0pci@1c,600000\pfc@1/sd@16,3.c.raw	obpsrv2
Up	SCSI192.9.201.267\devices\scsm@0.0pci@1c,600000\pfc@1/sd@16,4.c.raw	obpsrv2
Up	SCSI192.9.201.267\devices\scsm@0.0pci@1e,600000\pfc@1/sd@17,3.c.raw	obpsrv2
Up	SCSI192.9.201.267\devices\scsm@0.0pci@1e,600000\pfc@1/sd@17,4.c.raw	obpsrv2

Storage Events Show All Use Filter Performance Displayed Events: 155 Total Events: 354

Severity	Occurred	Source	Message
Information	July 12, 2002 11:15:50 AM EDT	Performance	Data Collector started on Fri Jul 12 11:15:50 EDT 2002.
Information	July 12, 2002 12:28:54 PM EDT	Performance	Data Collector started on Fri Jul 12 12:28:54 EDT 2002.
Information	July 12, 2002 1:00:00 PM EDT	Performance	PM threshold exceeded on port 01 of emcsw2.phlx.com for PortTotalErrors
Information	July 12, 2002 1:00:03 PM EDT	Performance	PM threshold exceeded on port 01 of emcsw1.phlx.com for PortTotalErrors
Information	July 12, 2002 12:28:54 PM EDT	Performance	Data Collector started on Fri Jul 12 12:28:54 EDT 2002.
Information	July 12, 2002 1:00:00 PM EDT	Performance	PM threshold exceeded on port 01 of emcsw2.phlx.com for PortTotalErrors
Information	July 12, 2002 1:00:03 PM EDT	Performance	PM threshold exceeded on port 01 of emcsw1.phlx.com for PortTotalErrors
Information	July 12, 2002 2:00:02 PM EDT	Performance	PM threshold exceeded on port 01 of emcsw2.phlx.com for PortTotalErrors
Information	July 12, 2002 2:00:03 PM EDT	Performance	PM threshold exceeded on port 01 of emcsw1.phlx.com for PortTotalErrors

HP SureStore Virtual Array 7100 - hp OpenView storage area manager

File View Tools Help

← → ↑ ↓ ↻ ↺ ↻ ↺ ↻ ↺

Disks
HBAs
Users
Volumes
ovo1.phlx.com
Directories
Disks
HBAs
Users
Volumes
Interconnect Devices
emcsw1.phlx.com
emcsw2.phlx.com
Hub(s)-2
Hub(s)-4
Storage Devices
EMC Symmetrix Disk Array
HP SureStore Virtual Array 7100
Unknown Device(s)
NAS Devices
Groups
LUN Allocation
Share Groups
Associated LUN Groups
Host Groups
LUN Groups

Disk Array: HP SureStore Virtual Array 7100

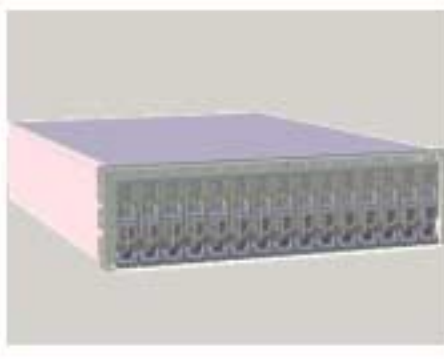
Properties Capacity Hosts Performance Mgmt Paths

Device Information

Name HP SureStore Virtual Array 7100
 Product Name HP SureStore Virtual Array 7100
 Vendor Hewlett-Packard
 Model A6188A
 Product Revision HP16
 Unique Instance ID HPA6188A00SG203G0097
 Serial Number 00SG203G0097
 Status Normal

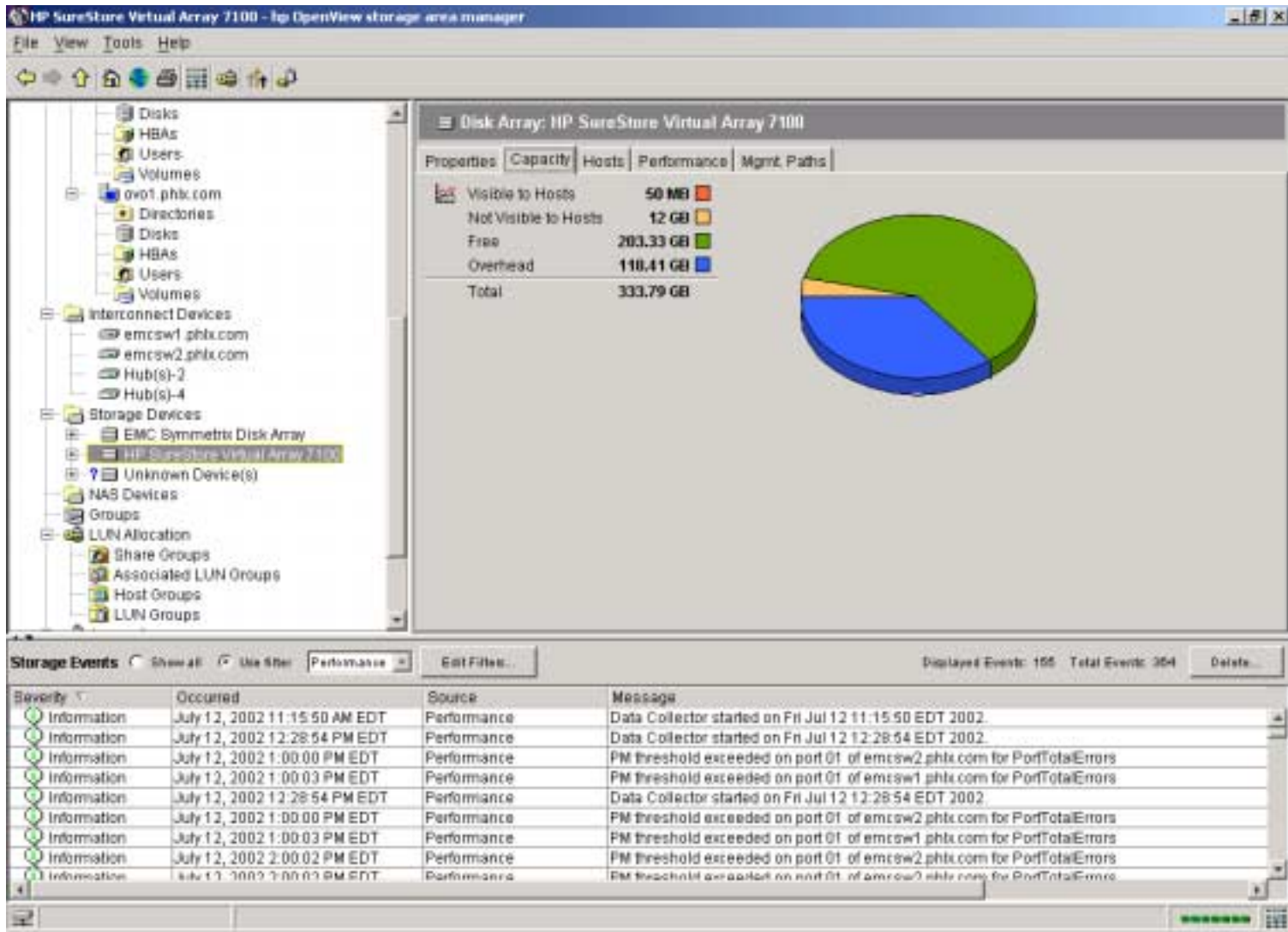
Member of Storage Networks

SAN-1



Storage Events Show All Use Filter Performance Edit Filter... Displayed Events: 155 Total Events: 354 Details...

Severity	Occurred	Source	Message
Information	July 12, 2002 11:15:50 AM EDT	Performance	Data Collector started on Fri Jul 12 11:15:50 EDT 2002.
Information	July 12, 2002 12:28:54 PM EDT	Performance	Data Collector started on Fri Jul 12 12:28:54 EDT 2002.
Information	July 12, 2002 1:00:00 PM EDT	Performance	PM threshold exceeded on port 01 of emcsw2.phlx.com for PortTotalErrors
Information	July 12, 2002 1:00:03 PM EDT	Performance	PM threshold exceeded on port 01 of emcsw1.phlx.com for PortTotalErrors
Information	July 12, 2002 12:28:54 PM EDT	Performance	Data Collector started on Fri Jul 12 12:28:54 EDT 2002.
Information	July 12, 2002 1:00:00 PM EDT	Performance	PM threshold exceeded on port 01 of emcsw2.phlx.com for PortTotalErrors
Information	July 12, 2002 1:00:03 PM EDT	Performance	PM threshold exceeded on port 01 of emcsw1.phlx.com for PortTotalErrors
Information	July 12, 2002 2:00:02 PM EDT	Performance	PM threshold exceeded on port 01 of emcsw2.phlx.com for PortTotalErrors
Information	July 12, 2002 2:00:03 PM EDT	Performance	PM threshold exceeded on port 01 of emcsw1.phlx.com for PortTotalErrors



HP SureStore Virtual Array 7100 - hp OpenView storage area manager

File View Tools Help

← → ↑ ↓ ↻ ↺ ↻ ↺ ↻ ↺

Disks
HBAs
Users
Volumes
ovo1.phlx.com
Directories
Disks
HBAs
Users
Volumes
Interconnect Devices
emcsw1.phlx.com
emcsw2.phlx.com
Hub(s)-2
Hub(s)-4
Storage Devices
EMC Symmetrix Disk Array
HP SureStore Virtual Array 7100
Unknown Device(s)
NAS Devices
Groups
LUN Allocation
Share Groups
Associated LUN Groups
Host Groups
LUN Groups

Disk Array: HP SureStore Virtual Array 7100

Properties Capacity Hosts Performance Mgmt Paths

Number of hosts: 1

host	Size /	System Type
ovo1.phlx.com		50 MB HP-LUX
< unknown >		12 GB
< free >		203.33 GB

Storage Events Show All Use Filter Performance Edit Filter... Displayed Events: 155 Total Events: 354 Details...

Severity	Occurred	Source	Message
Information	July 12, 2002 11:15:50 AM EDT	Performance	Data Collector started on Fri Jul 12 11:15:50 EDT 2002.
Information	July 12, 2002 12:28:54 PM EDT	Performance	Data Collector started on Fri Jul 12 12:28:54 EDT 2002.
Information	July 12, 2002 1:00:00 PM EDT	Performance	PM threshold exceeded on port 01 of emcsw2.phlx.com for PortTotalErrors
Information	July 12, 2002 1:00:03 PM EDT	Performance	PM threshold exceeded on port 01 of emcsw1.phlx.com for PortTotalErrors
Information	July 12, 2002 12:28:54 PM EDT	Performance	Data Collector started on Fri Jul 12 12:28:54 EDT 2002.
Information	July 12, 2002 1:00:00 PM EDT	Performance	PM threshold exceeded on port 01 of emcsw2.phlx.com for PortTotalErrors
Information	July 12, 2002 1:00:03 PM EDT	Performance	PM threshold exceeded on port 01 of emcsw1.phlx.com for PortTotalErrors
Information	July 12, 2002 2:00:02 PM EDT	Performance	PM threshold exceeded on port 01 of emcsw2.phlx.com for PortTotalErrors
Information	July 12, 2002 2:00:03 PM EDT	Performance	PM threshold exceeded on port 01 of emcsw1.phlx.com for PortTotalErrors

HP SureStore Virtual Array 7100 - hp OpenView storage area manager

File View Tools Help

← → ↑ ↓ ↻ ↺ ↻ ↺

- Disks
- HBAs
- Users
- Volumes
- ovo1.phlx.com
 - Directories
 - Disks
 - HBAs
 - Users
 - Volumes
- Interconnect Devices
 - emcsw1.phlx.com
 - emcsw2.phlx.com
 - Hub(s)-2
 - Hub(s)-4
- Storage Devices
 - EMC Symmetrix Disk Array
 - HP SureStore Virtual Array 7100
 - Unknown Device(s)
- NAS Devices
- Groups
- LUN Allocation
 - Share Groups
 - Associated LUN Groups
 - Host Groups
 - LUN Groups

Disk Array: HP SureStore Virtual Array 7100

Properties | Capacity | Hosts | Performance | Mgmt. Paths

Path Status	Path	Host
Up	SCSI192.9.201.73\dev\scsi\c6t12d0*	ovo1.phlx.com
Up	SCSI192.9.201.73\dev\scsi\c50d0*	ovo1.phlx.com
Up	SCSI192.9.201.73\dev\scsi\c8t14d0*	ovo1.phlx.com
Up	SCSI192.9.201.73\dev\scsi\c70d0*	ovo1.phlx.com

Storage Events Show All Use Filter Performance Displayed Events: 155 Total Events: 354

Severity	Occurred	Source	Message
Information	July 12, 2002 11:15:50 AM EDT	Performance	Data Collector started on Fri Jul 12 11:15:50 EDT 2002.
Information	July 12, 2002 12:28:54 PM EDT	Performance	Data Collector started on Fri Jul 12 12:28:54 EDT 2002.
Information	July 12, 2002 1:00:00 PM EDT	Performance	PM threshold exceeded on port 01 of emcsw2.phlx.com for PortTotalErrors
Information	July 12, 2002 1:00:03 PM EDT	Performance	PM threshold exceeded on port 01 of emcsw1.phlx.com for PortTotalErrors
Information	July 12, 2002 12:28:54 PM EDT	Performance	Data Collector started on Fri Jul 12 12:28:54 EDT 2002.
Information	July 12, 2002 1:00:00 PM EDT	Performance	PM threshold exceeded on port 01 of emcsw2.phlx.com for PortTotalErrors
Information	July 12, 2002 1:00:03 PM EDT	Performance	PM threshold exceeded on port 01 of emcsw1.phlx.com for PortTotalErrors
Information	July 12, 2002 2:00:02 PM EDT	Performance	PM threshold exceeded on port 01 of emcsw2.phlx.com for PortTotalErrors
Information	July 12, 2002 2:00:03 PM EDT	Performance	PM threshold exceeded on port 01 of emcsw1.phlx.com for PortTotalErrors

Service Levels - hp OpenView storage area manager

File View Tools Help

← → ↑ ↓ ↻ ↺ ↻ ↺ ↻ ↺

- Disks
- HBAs
- Users
- Volumes
- Interconnect Devices
 - emcsw1.phlx.com
 - emcsw2.phlx.com
 - Hub(s)-2
 - Hub(s)-4
- Storage Devices
 - EMC Symmetrix Disk Array
 - HP SureStore Virtual Array 7100
 - Unknown Device(s)
- NAS Devices
- Groups
- LUN Allocation
 - Share Groups
 - Associated LUN Groups
 - Host Groups
 - LUN Groups
- Accounting
 - Customers
 - Service Levels**
 - Directories
 - Users
 - Volumes

Service Levels on Accounting

List

Service Lev...	Cost/GBHo...	LUNs in Or...	Space in Or...	LUNs not in...	Space not i...	% of Servic...
Silver SL-1...	\$0.030000	1	50 MB	0	0	100 %
Gold SL-10...	\$0.050000	3	252.89 GB	0	0	100 %

Totals

Service Level...		4	252.94 GB	0	0	100 %
-------------------------	--	----------	------------------	----------	----------	--------------

New Service Level... Cancel... X Data Deleted

Storage Events Show All Use Filter Performance Edit Filter...

Displayed Events: 155 Total Events: 364 Details...

Severity	Occurred	Source	Message
Information	July 12, 2002 11:15:50 AM EDT	Performance	Data Collector started on Fri Jul 12 11:15:50 EDT 2002.
Information	July 12, 2002 12:28:54 PM EDT	Performance	Data Collector started on Fri Jul 12 12:28:54 EDT 2002.
Information	July 12, 2002 1:00:00 PM EDT	Performance	PM threshold exceeded on port 01 of emcsw2.phlx.com for PortTotalErrors
Information	July 12, 2002 1:00:03 PM EDT	Performance	PM threshold exceeded on port 01 of emcsw1.phlx.com for PortTotalErrors
Information	July 12, 2002 12:28:54 PM EDT	Performance	Data Collector started on Fri Jul 12 12:28:54 EDT 2002.
Information	July 12, 2002 1:00:00 PM EDT	Performance	PM threshold exceeded on port 01 of emcsw2.phlx.com for PortTotalErrors
Information	July 12, 2002 1:00:03 PM EDT	Performance	PM threshold exceeded on port 01 of emcsw1.phlx.com for PortTotalErrors
Information	July 12, 2002 2:00:02 PM EDT	Performance	PM threshold exceeded on port 01 of emcsw2.phlx.com for PortTotalErrors
Information	July 12, 2002 2:00:03 PM EDT	Performance	PM threshold exceeded on port 01 of emcsw1.phlx.com for PortTotalErrors

enops - hp OpenView storage area manager

File View Tools Help

← → ↑ ↓ ↻ ↺ ↻ ↺ ↻ ↺

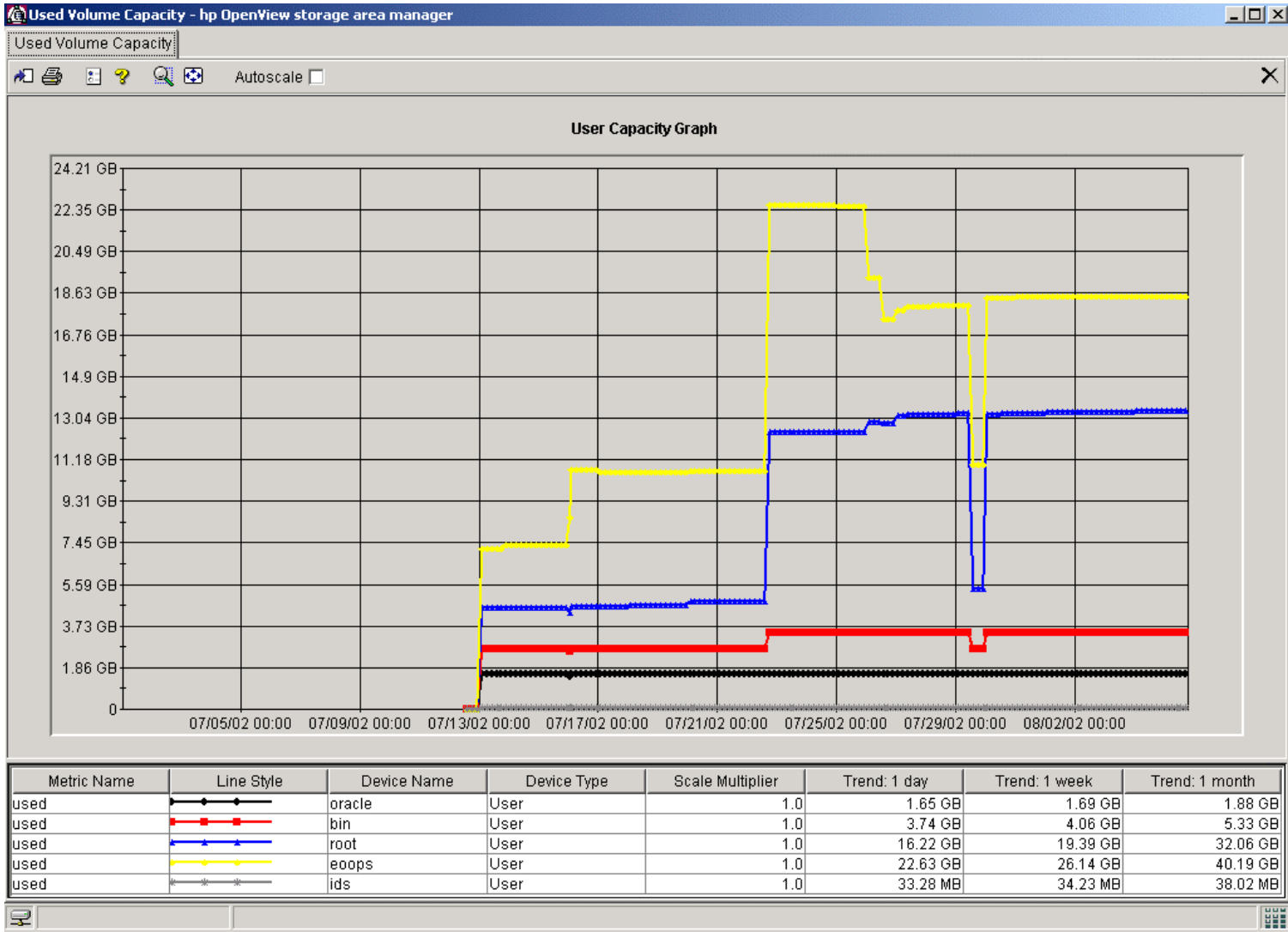
User: eoops

Properties Volumes

Volume	System Device	Space Used
avar on host obpsrv1	obpsrv1	696
avar on host obpdev	obpdev	4 48 KB
atmp on host obpdev	obpdev	81 82 KB
fopt on host obpdev	obpdev	248 KB
fradcrash on host obpdev	obpdev	1 45 GB
reporthome on host obpsrv1	obpsrv1	2 76 GB
reporthome on host obpdev	obpdev	3 78 GB
lobpdata on host obpsrv1	obpsrv1	4 8 GB
lobpdata on host obpdev	obpdev	5 7 GB
Totals		18 49 GB

Storage Events Show All Use Filter Performance Edit Filter... Displayed Events: 155 Total Events: 354 Details...

Severity	Occurred	Source	Message
Information	July 12, 2002 11:15:50 AM EDT	Performance	Data Collector started on Fri Jul 12 11:15:50 EDT 2002
Information	July 12, 2002 12:28:54 PM EDT	Performance	Data Collector started on Fri Jul 12 12:28:54 EDT 2002
Information	July 12, 2002 1:00:00 PM EDT	Performance	PM threshold exceeded on port 01 of emcsw2.phlx.com for PortTotalErrors
Information	July 12, 2002 1:00:03 PM EDT	Performance	PM threshold exceeded on port 01 of emcsw1.phlx.com for PortTotalErrors
Information	July 12, 2002 12:28:54 PM EDT	Performance	Data Collector started on Fri Jul 12 12:28:54 EDT 2002
Information	July 12, 2002 1:00:00 PM EDT	Performance	PM threshold exceeded on port 01 of emcsw2.phlx.com for PortTotalErrors
Information	July 12, 2002 1:00:03 PM EDT	Performance	PM threshold exceeded on port 01 of emcsw1.phlx.com for PortTotalErrors
Information	July 12, 2002 2:00:02 PM EDT	Performance	PM threshold exceeded on port 01 of emcsw2.phlx.com for PortTotalErrors
Information	July 12, 2002 2:00:03 PM EDT	Performance	PM threshold exceeded on port 01 of emcsw1.phlx.com for PortTotalErrors



Volumes - hp OpenView storage area manager

File View Tools Help

Volumes on PHILX

Capacity

Show group: All Groups

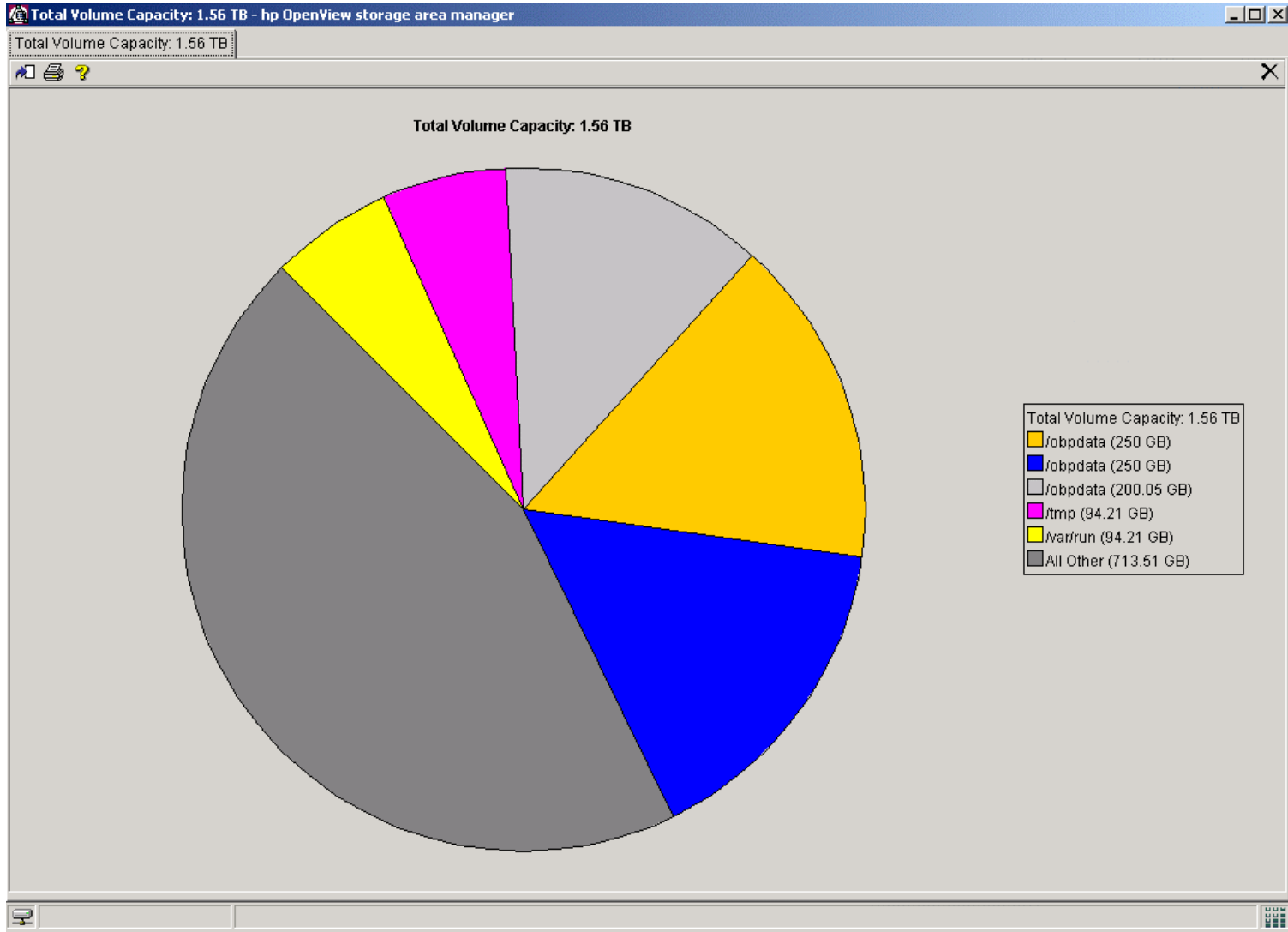
Volume	Host / NAS	Group	Total	Used	Free	Type	Usage %
robpdata...	obpsrv2		250 GB	476.17 MB	245.64 GB	wfs	0%
robpdata...	obpsrv1		250 GB	28.88 GB	217.67 GB	wfs	12%
robpdata...	obpdev		200.05 GB	5.77 GB	192.14 GB	wfs	3%
itmp on h...	obpsrv1		94.21 GB	48 kB	94.21 GB	tmpfs	0%
Avatrun o...	obpsrv1		94.21 GB	16 kB	94.21 GB	tmpfs	0%
itmp on h...	obpsrv2		93.48 GB	56.41 MB	93.43 GB	tmpfs	0%
Avatrun o...	obpsrv2		93.43 GB	16 kB	93.43 GB	tmpfs	0%
itmp on h...	obpdev		79.04 GB	168 kB	79.04 GB	tmpfs	0%
Avatrun o...	obpdev		79.04 GB	16 kB	79.04 GB	tmpfs	0%
apps on ...	obpsrv2		33.78 GB	16.91 MB	33.5 GB	wfs	0%
Avatcras...	obpsrv2		33.78 GB	16.91 MB	33.5 GB	wfs	0%
apps on ...	obpsrv1		33.78 GB	16.91 MB	33.5 GB	wfs	0%
Avatcras...	obpsrv1		33.78 GB	16.91 MB	33.5 GB	wfs	0%
apps on ...	obpdev		33 GB	17.25 MB	32.73 GB	wfs	0%
Avatcras...	obpdev		33 GB	1.47 GB	31.29 GB	wfs	4%
iu01 on h...	ovot.ph...		18.95 GB	1.6 GB	15.12 GB	wfs	10%
Totals			1.56 TB	73.89 GB	1.47 TB		5%

Storage Events

Show all Use filter Performance Edit Filter...

Displayed Events: 155 Total Events: 364 Details...

Severity	Occurred	Source	Message
Information	July 12, 2002 11:15:50 AM EDT	Performance	Data Collector started on Fri Jul 12 11:15:50 EDT 2002.
Information	July 12, 2002 12:28:54 PM EDT	Performance	Data Collector started on Fri Jul 12 12:28:54 EDT 2002.
Information	July 12, 2002 1:00:00 PM EDT	Performance	PM threshold exceeded on port 01 of emcsw2.phlx.com for PortTotalErrors
Information	July 12, 2002 1:00:03 PM EDT	Performance	PM threshold exceeded on port 01 of emcsw1.phlx.com for PortTotalErrors
Information	July 12, 2002 12:28:54 PM EDT	Performance	Data Collector started on Fri Jul 12 12:28:54 EDT 2002.
Information	July 12, 2002 1:00:00 PM EDT	Performance	PM threshold exceeded on port 01 of emcsw2.phlx.com for PortTotalErrors
Information	July 12, 2002 1:00:03 PM EDT	Performance	PM threshold exceeded on port 01 of emcsw1.phlx.com for PortTotalErrors
Information	July 12, 2002 2:00:02 PM EDT	Performance	PM threshold exceeded on port 01 of emcsw2.phlx.com for PortTotalErrors
Information	July 12, 2002 2:00:03 PM EDT	Performance	PM threshold exceeded on port 01 of emcsw1.phlx.com for PortTotalErrors



Volumes - hp OpenView storage area manager

File View Tools Help

Volumes on PHLX

Storage Events Show all Use filter Performance Edit Filters... Displayed Events: 364 Total Events: 364 Delete...

Severity	Occurred	Source	Message
Information	August 2, 2002 11:00:00 PM EDT	Accountant	Collecting usage data. ; ;
Information	August 2, 2002 1:00:00 AM EDT	Performance	Auto Purging Removed 0 Snapshots with Time Stamp older than: Tue Jul 02 00:00:00 EDT 2002
Information	August 2, 2002 1:00:00 AM EDT	Performance	Auto Purging Removed 0 Snapshots with Time Stamp older than: Tue Jul 02 00:00:00 EDT 2002
Information	August 1, 2002 11:00:00 PM EDT	Accountant	Collecting usage data. ; ;
Information	August 1, 2002 1:30:04 AM EDT	Accountant	Bill exported to HTML format. ; ;
Information	August 1, 2002 1:30:04 AM EDT	Accountant	Bill exported to CSV format. ; ;
Information	August 1, 2002 1:30:04 AM EDT	Accountant	Scheduled bill generated. ; ;
Information	August 1, 2002 1:00:00 AM EDT	Performance	Auto Purging Removed 0 Snapshots with Time Stamp older than: Mon Jul 01 00:00:00 EDT 2002
Information	August 1, 2002 1:00:00 AM EDT	Performance	Auto Purging Removed 0 Snapshots with Time Stamp older than: Mon Jul 01 00:00:00 EDT 2002
Information	July 31, 2002 11:00:00 PM EDT	Accountant	Collecting usage data. ; ;
Information	July 31, 2002 3:13:51 AM EDT	Accountant	LUN ID 572083 (14E) of Device ID EMCSYMMETRIX500374 Changed Size to 15.084814336 Giga
Information	July 31, 2002 3:13:51 AM EDT	Accountant	LUN ID 572084 (14F) of Device ID EMCSYMMETRIX500374 Changed Size to 15.084814336 Giga
Information	July 31, 2002 3:13:51 AM EDT	Accountant	LUN ID 572085 (150) of Device ID EMCSYMMETRIX500374 Changed Size to 3.017801728 Giga
Information	July 31, 2002 3:13:50 AM EDT	Accountant	LUN ID 572086 (151) of Device ID EMCSYMMETRIX500374 Changed Size to 3.017801728 Giga
Information	July 31, 2002 1:00:00 AM EDT	Performance	Auto Purging Removed 0 Snapshots with Time Stamp older than: Sun Jun 30 00:00:00 EDT 2002
Information	July 31, 2002 1:00:00 AM EDT	Performance	Auto Purging Removed 0 Snapshots with Time Stamp older than: Sun Jun 30 00:00:00 EDT 2002
Information	July 30, 2002 11:00:00 PM EDT	Accountant	Collecting usage data. ; ;
Information	July 30, 2002 1:00:00 AM EDT	Performance	Auto Purging Removed 0 Snapshots with Time Stamp older than: Sat Jun 29 00:00:00 EDT 2002
Information	July 30, 2002 1:00:00 AM EDT	Performance	Auto Purging Removed 0 Snapshots with Time Stamp older than: Sat Jun 29 00:00:00 EDT 2002
Information	July 29, 2002 11:00:00 PM EDT	Accountant	Collecting usage data. ; ;
Information	July 29, 2002 1:00:06 PM EDT	Performance	PM threshold exceeded on port 00 of emcsw1.phlx.com for PortSynchronizationLosses
Information	July 29, 2002 1:00:06 PM EDT	Performance	PM threshold exceeded on port 00 of emcsw1.phlx.com for PortSynchronizationLosses
Information	July 29, 2002 1:00:04 PM EDT	Performance	PM threshold exceeded on port 00 of emcsw1.phlx.com for PortSignalLosses
Information	July 29, 2002 1:00:04 PM EDT	Performance	PM threshold exceeded on port 00 of emcsw1.phlx.com for PortSignalLosses
Information	July 29, 2002 1:00:04 PM EDT	Performance	PM threshold exceeded on port 00 of emcsw1.phlx.com for PortTotalErrors
Information	July 29, 2002 1:00:04 PM EDT	Performance	PM threshold exceeded on port 00 of emcsw1.phlx.com for PortTotalErrors
Information	July 29, 2002 1:00:02 PM EDT	Performance	PM threshold exceeded on port 00 of emcsw2.phlx.com for PortSynchronizationLosses
Information	July 29, 2002 1:00:02 PM EDT	Performance	PM threshold exceeded on port 00 of emcsw2.phlx.com for PortSynchronizationLosses
Information	July 29, 2002 1:00:01 PM EDT	Performance	PM threshold exceeded on port 00 of emcsw2.phlx.com for PortSignalLosses
Information	July 29, 2002 1:00:01 PM EDT	Performance	PM threshold exceeded on port 00 of emcsw2.phlx.com for PortSignalLosses
Information	July 29, 2002 1:00:00 PM EDT	Performance	PM threshold exceeded on port 00 of emcsw2.phlx.com for PortTotalErrors
Information	July 29, 2002 1:00:00 PM EDT	Performance	PM threshold exceeded on port 00 of emcsw2.phlx.com for PortTotalErrors

Lessons Learned

- Validate hardware, firmware and required software levels in support matrix
- Understand your HBA vendor's SNIA library implementation
- Expect periodic warning messages from some vendor's equipment

Lessons Learned (cont'd)

- Reporting on non-SAN attached storage can also be valuable
- Understand the relationship with other OpenView components to augment data gathering from hosts