

Bringing Linux apps to HP-UX11i: It's easier than you think

Mary Kwan

Linux Affinity Product Manager
HP



Agenda

- Provide Linux app development benefits
- How to bring Linux apps to hp-ux 11i
- Share hp-ux 11i insights for Linux apps
- References and Q&A

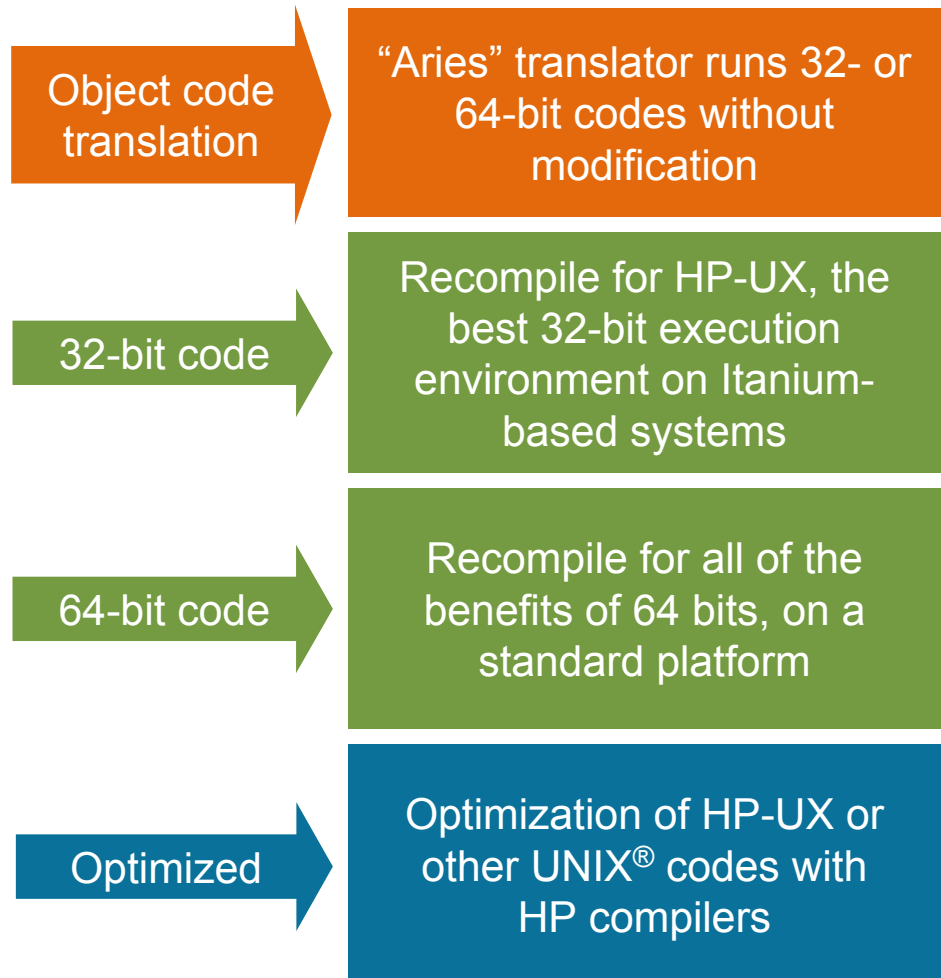
Getting to know you

- you & Linux soon
 - planning to use Linux soon?
- you & Linux now
 - using Linux today?
 - using both Linux & hp-ux today?
- using Linux for application development?

HP-UX 11i compatibility

Key benefits

- Binary compatibility through Aries dynamic code translation technology—no recompilation
- Source code compatibility from PA-RISC to Intel® Itanium® Processor Family—single source code stream
- Data compatibility between PA-RISC and Itanium Processor Family—no data conversions



Enabling compatibility: UNIX®, Linux, and Windows®

HP-UX 11i

- Same look and feel
 - For PA-RISC or Itanium®-based servers
- Application compatibility
 - Source, data, and binary
- Same administration tools
 - Serviceguard, Workload Manager, Partition Manager, OpenView, to name a few



Windows

- CIFS and LDAP-UX Integration for Windows interoperability

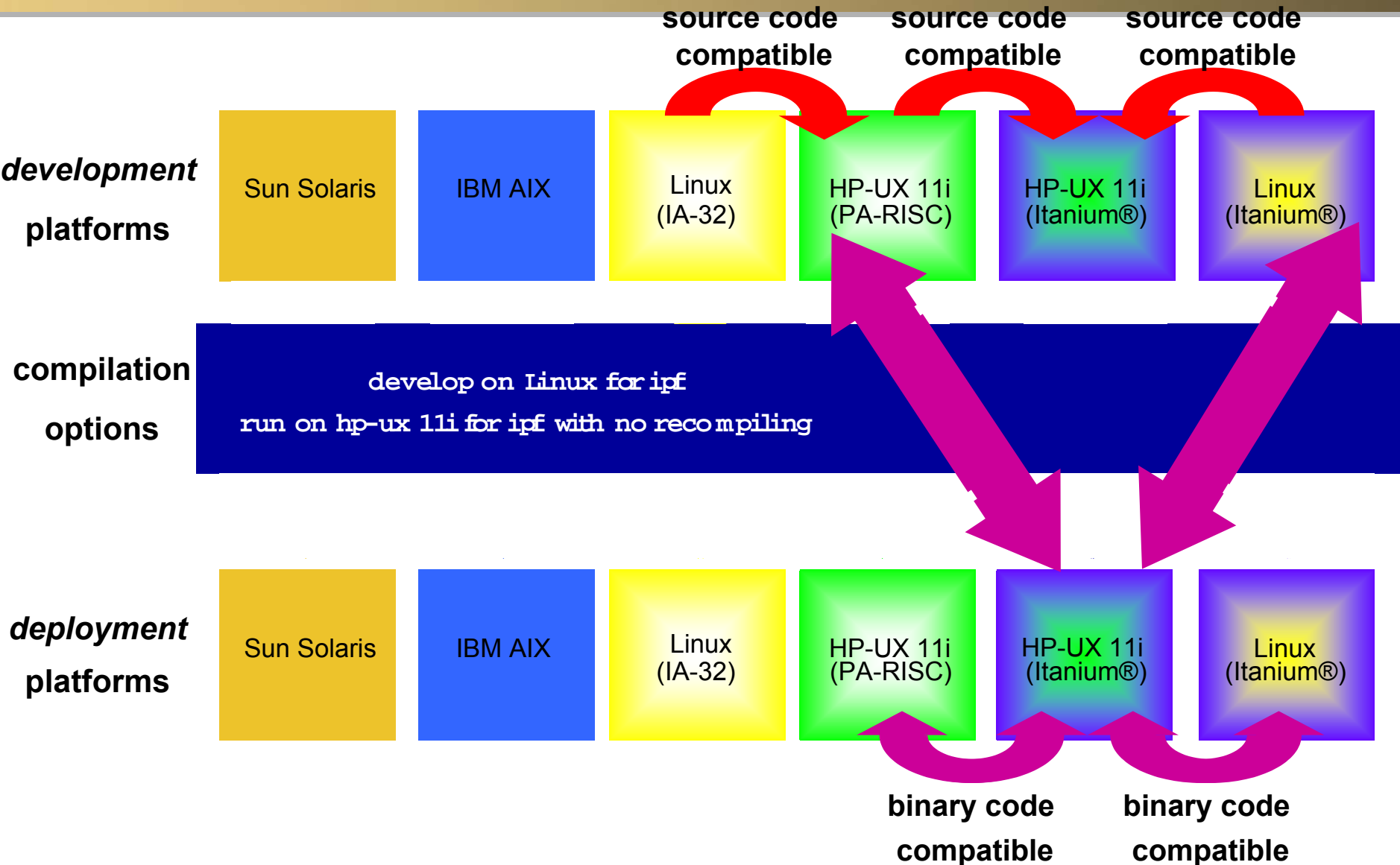
Develop on Linux, deploy on HP-UX 11i

- Linux Porting Kit for Linux source compatibility
- Linux Runtime Environment for Linux binary compatibility



HP-UX 11i v2: ideal for new deployments

Consider the strategy



Benefits of Linux

- Low cost compared to other OSes
- Open Source
 - extensive toolsets
 - great degree of knowledge in community
 - freely available
- Popular with developers



Agenda

- Provide Linux app development benefits
- How to bring Linux apps to hp-ux 11i
- Share hp-ux 11i insights for Linux apps
- References and Q&A

How to bring Linux apps into HP-UX 11i – source compatibility

Linux Porting Kit

Open Source Developer's Toolkit

- a collection of 50+ popular Open Source tools

Linux-Compatible APIs

- work concurrently with existing hp-ux libraries to make available 96% of Linux core APIs

Linux Software Transition Kit

- scanner tools to identify porting issues and suggest recommendation for changes

Linux Porting Guide & Support Services

- extensive, easy-to-use documentation showing porting steps and issues

Benefits

- reduce porting efforts with over 50 Open Source tools and 96% of Linux core APIs
- improve productivity with scanner tools to find porting issues
- simplify developer's experience with this out-of-the-box porting kit
- free download and CD at www.devresource.hp.com/LPK

How to bring Linux apps into HP-UX 11i – binary compatibility

Linux Runtime Environment Toolkit

Linux LE Itanium Runtime Environment

- a collection of libraries and tools, including commands, utilities, packages, and marshalling layers

Linux Software Transition Kit

- scanner tools to identify porting issues and suggest recommendation for changes

Linux Runtime Environment White Paper

- extensive, easy-to-use paper documenting binary compatibility processes between Linux and HP-UX

Benefits

- develop on Linux, deploy to HP-UX
- run “Linux” applications on HP-UX with mission critical features
- reduce build and support costs for multi-OS opportunities

Which one to use?

Development
environment

Production
environment

Linux for IA-32

Linux Porting Kit
(source)

HP-UX 11i
for PA-RISC

Linux for Itanium®

Linux Porting Kit
(source)

HP-UX 11i
for Itanium®

Linux for Itanium®

Linux Runtime Environment
(binary)

HP-UX 11i
for Itanium®

Linux for IA-32

not possible

HP-UX 11i
for Itanium®

Overview of Linux Runtime Environment

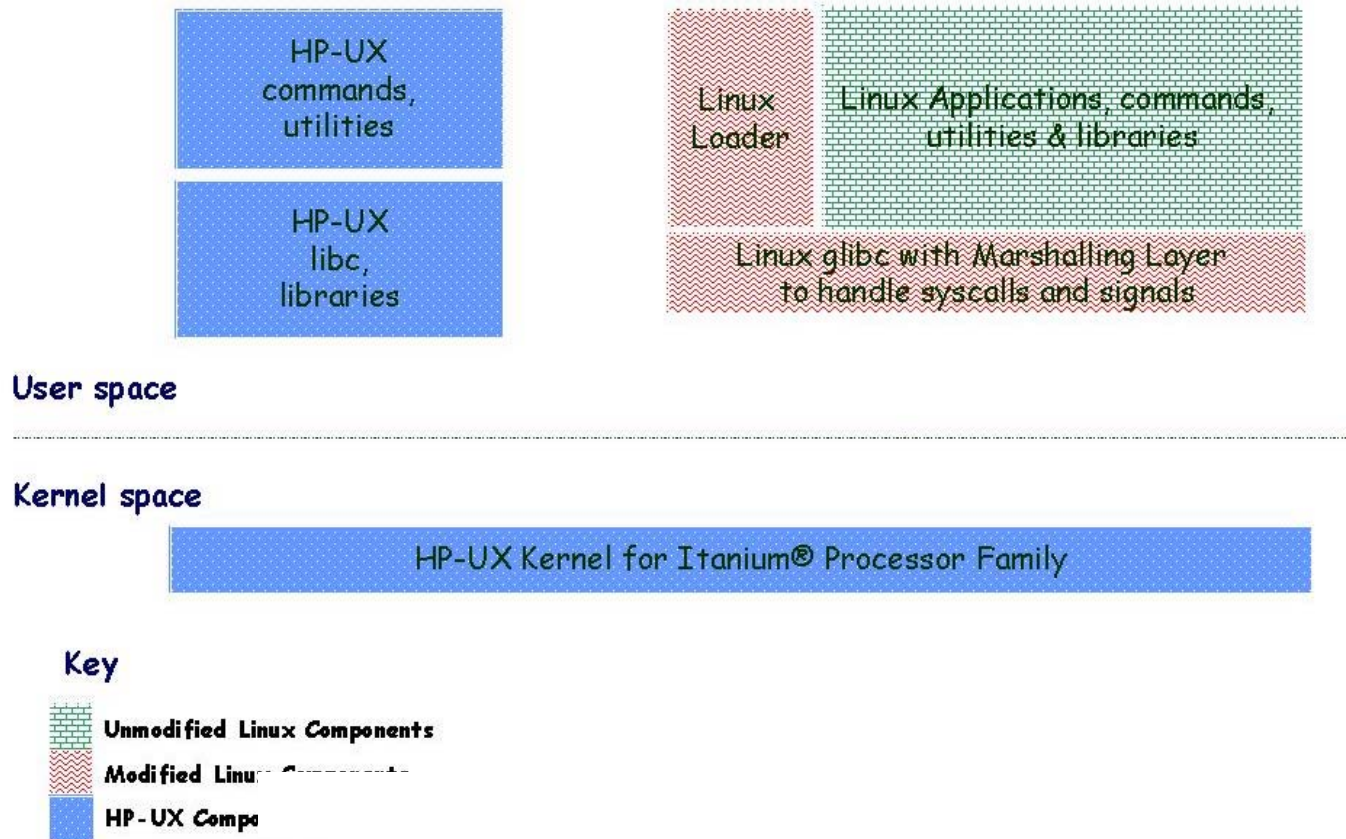


Figure 1: Overview of the Linux Runtime Environment

Program startup for Linux apps

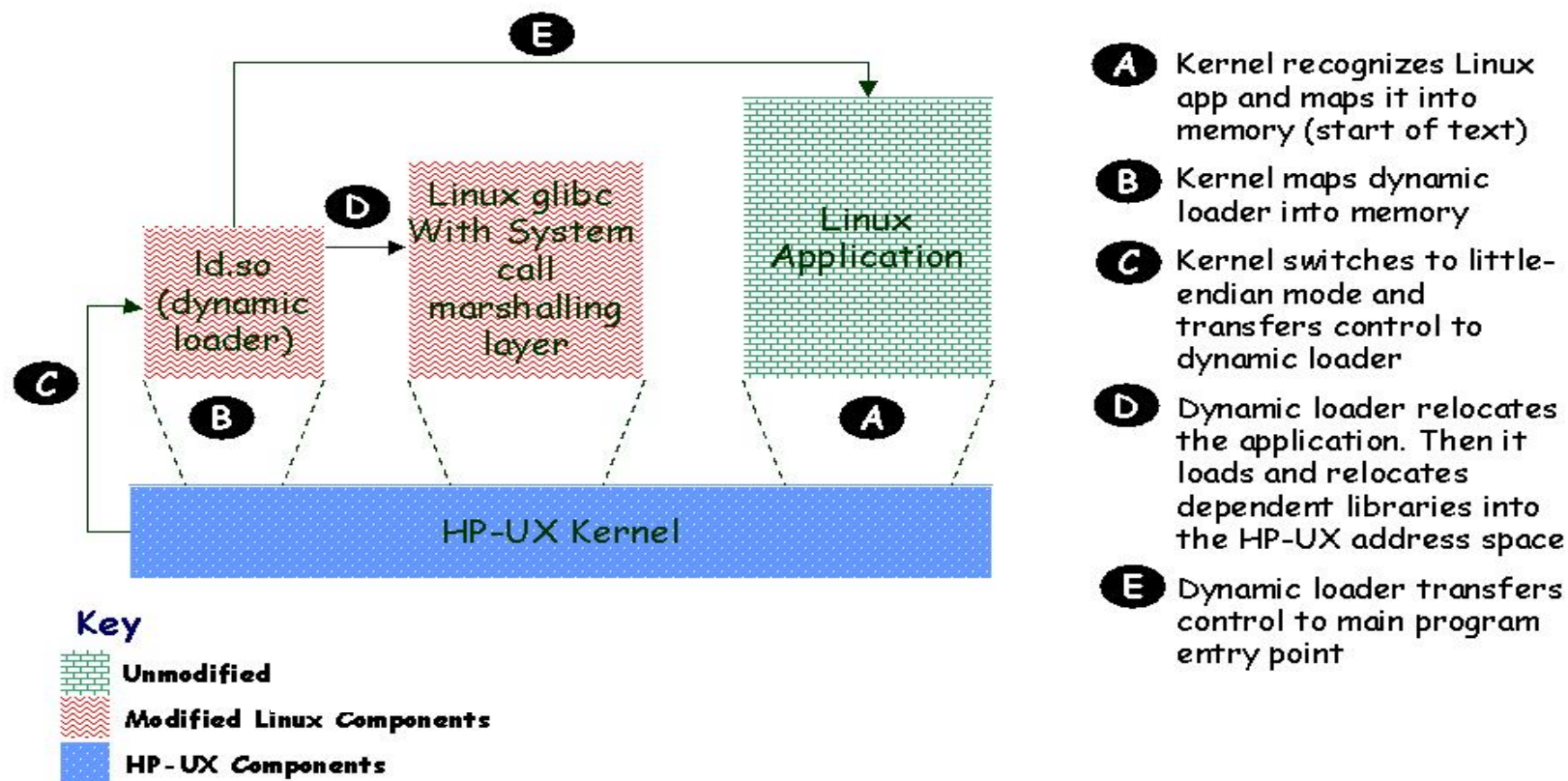


Figure 2: Program startup for Linux applications on LRE

System calls

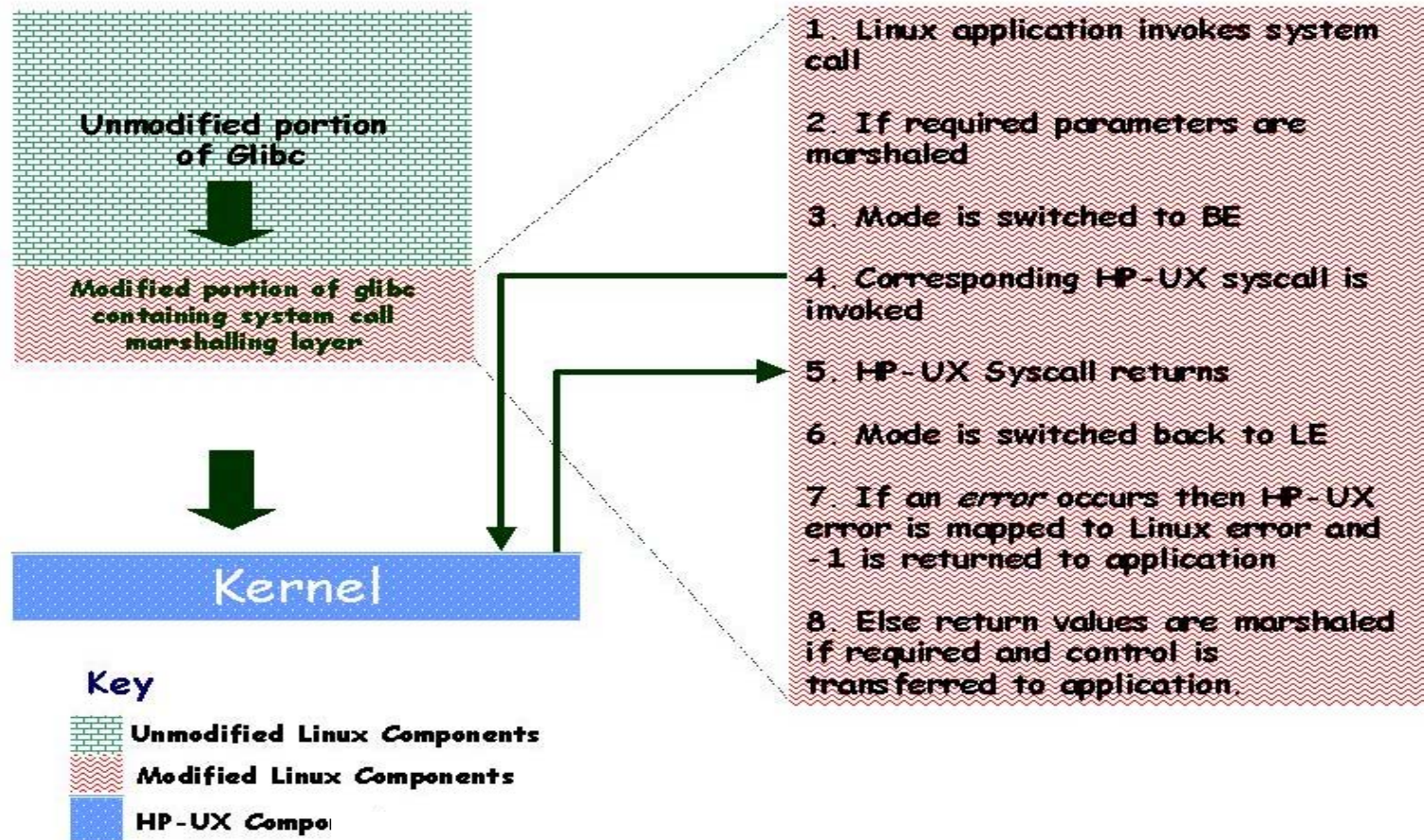


Figure 3: System call Marshalling in LRE

Signal handling

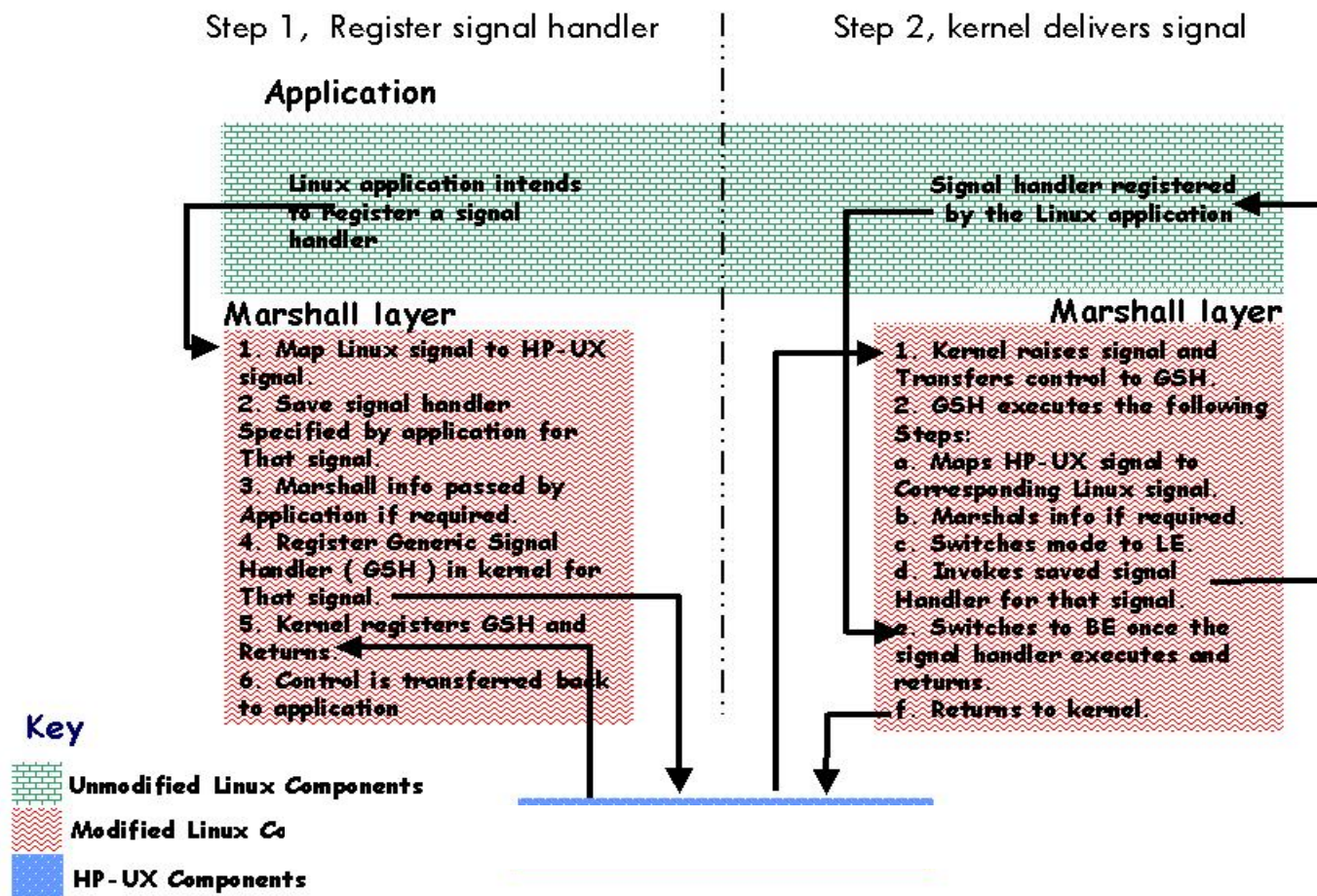


Figure 4: Signal Handling in Linux Runtime Environment

Linux runtime environment restrictions

- Linux 32 bit (x86) applications
- Applications that are bound to archive libraries through which system calls are invoked.
- Kernel intrusive applications
- Applications that directly access persistent system files, directly manipulate hardware or use Linux-specific kernel API's

Agenda

- Provide Linux app development benefits
- How to bring Linux apps to hp-ux 11i
- Share hp-ux 11i insights for Linux apps
- References and Q&A

HP-UX momentum continues

The HP-UX ecosystem

- A \$20B business
- Over 2 million units active
- #1 UNIX® market share by revenue last two quarters

More than 10 years proven expertise in mission-critical and workload management

- More than 70,000 Serviceguard licenses
- Over 65,000 resource and workload management licenses

Aggressive investment in HP-UX

- Major component of HP's overall R&D budget
- Over 2000 software engineers focused on the HP-UX ecosystem
 - Over 1300 HP-UX patents filed in 2002



HP-UX 11i recognized leadership



*2002 UNIX Function
Review Report*

- #1 Scalability
- #1 Reliability, availability, and serviceability
- #1 Systems management
- #1 Internet and Web application services
- #1 Directory and security services



Server Operating Systems Report: Winners and losers in the open/proprietary OS market



HP Superdome listed as top UNIX® server platform in Gartner, Inc.'s OLTP Server Evaluation Model report, 2002 and Data Warehousing Server Evaluation Model, 2002



"HP climbs to the top of the enterprise operating system market"
"2002 VARBusiness Annual Report Card . . . voted it to the top . . . in the enterprise operating platforms category."

hp-ux 11i insights for Linux apps deployment

- better reliability and system management
- stronger directory & security features
- world-class high availability



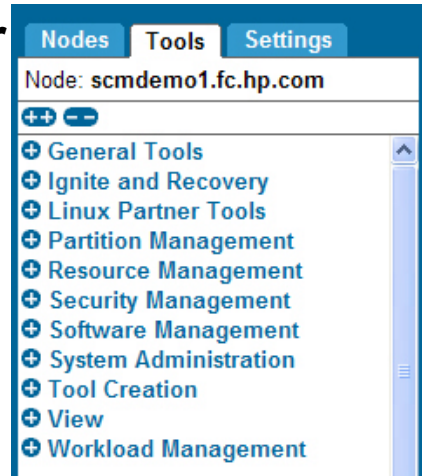
HP-UX 11i reduces management complexity

Servicecontrol Manager

Integrates HP-UX and 3rd party tools

Executes multi-system commands simultaneously

Reduces operator error via role-based security



Automated and intelligent management

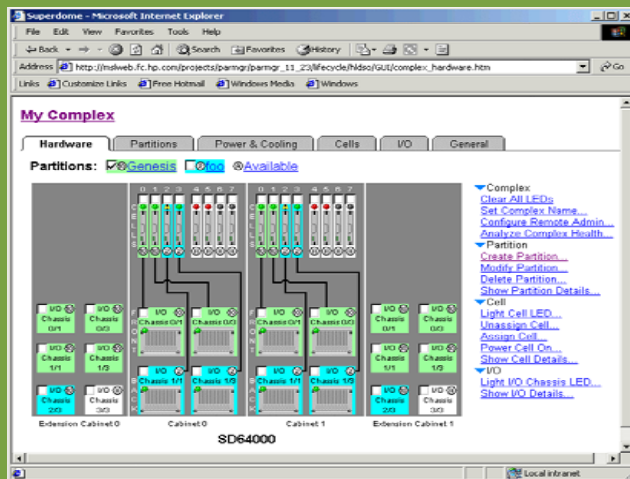
Rapid deployment (Ignite/UX)

Deploys system images and packaged software

System inventory manager

Asset management

Snapshot for troubleshooting



Partition Manager

Configures partitions

Real-life, big picture view for hard-partitioned server

Workload Manager

Adjusts resources automatically based on predefined SLOs

And many more...

Comprehensive, integrated, supported HP-UX security provides maximum protection

Physical analogy: bank security

Continuous and secure
operation



Network
security



Intrusion
prevention



Intrusion detection
and analysis



Mitigation

- IPSec
- Secure Shell
- Kerberos
- LDAP-UX integration
- Bind 9.2
- AAA Server*

- IPFilter
- Bastille
- Install-time security
- Pluggable authentication
- True random number generation (/dev/random)

- Host-based intrusion detection
- Audit

- Role-based access control (SCM)

High availability built-into HP-UX 11i



**Continuous and secure
operation**

- **Highly reliable, solid foundation**
 - quality is number one goal
 - patch management – responding quickly to required fixes
- **Built-in resiliency – minimize downtime**
 - configure for redundancy and resource sparing
 - detect and resist failure
 - failure isolation through hardware and software
- **Speedy recovery**
 - Discover and analyze potential problems, resolve quickly and efficiently
 - online repair and upgrade, dynamic reconfiguration
- **Workload flexibility with high availability / dynamic computing**
 - partitioning enables application isolation
 - load balance resources as needed

HP-UX 11i version 2: continuous and secure operation

- Scalability
 - To 64-way
 - Cell-local memory
 - 512 GB memory; 4 TB file systems
- Deliver quality
- Secure operation
- High availability
 - Single system
 - Multiple systems (clusters)
- Disaster tolerance and recovery
- Continuous connectivity
 - IPv6 production version
 - Secure mobile infrastructure IPv4/AAA
 - Wireless TCP/IP



Continuous and secure
operation



Agenda

- Provide Linux app development benefits
- How to bring Linux apps to hp-ux 11i
- Share hp-ux 11i insights for Linux apps
- References and Q&A

PRESENT → FUTURE



SOLUTIONS THAT INVOLVE AN ADAPTIVE INFRASTRUCTURE



ADAPTIVE INFRASTRUCTURE



RESOURCES / APPROACH

WHO

HOW

WHAT

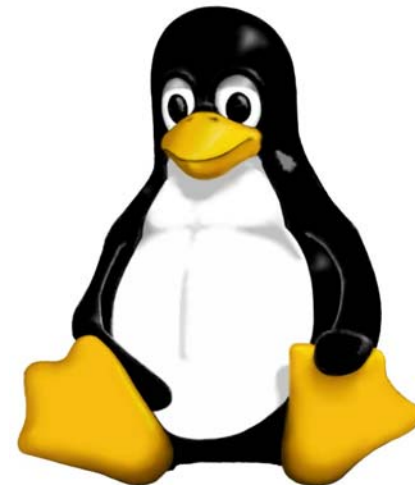
WHEN

Next steps

Where to go for more information

References

- **HP-UX 11i web site**
<http://www.hp.com/go/hpux11iv2>
- **Linux web site from HP**
<http://www.hp.com/go/linux>
- **HP's developer & solution partner portal**
<http://www.hp.com/dspp>
- **Linux web site from HP**
<http://www.hp.com/go/LPK>



Business Systems Evolution

- Visit the website: <http://www.hp.com/go/evolve>
 - Centralized resource for programs, white papers, tools, web-based training, etc.
 - Select your present platform (AlphaServer, HP 9000, HP e3000)
- Sign up for “Customer Times” newsletter for quarterly updates
- Contact your sales rep or channel partner



HP Integrity Power Partner Program

- Worldwide DSPP program for ISVs
- Launched on June 30, 2003
- Provides marketing programs, technical resources, and hardware access for volume ISVs to transition their applications to one or more of the following:
 - HP-UX 11i v2 on Itanium
 - Windows Server 2003 on Itanium
 - Linux on Itanium
- Visit web site:
<http://www.hp.com/go/itaniumpartners>



Q & A



Thank you for your attention!

mary kwan

mary.kwan@hp.com



Interex, Encompass and HP bring you a powerful new HP World.

