

Managing ProLiant Servers Running NetWare (2239)

Brad Kirby

Product Manager
Industry Standard Servers



Topics

- Approach toward NetWare support
- NetWare management capabilities
- Questions and demonstration

Approach toward NetWare Support

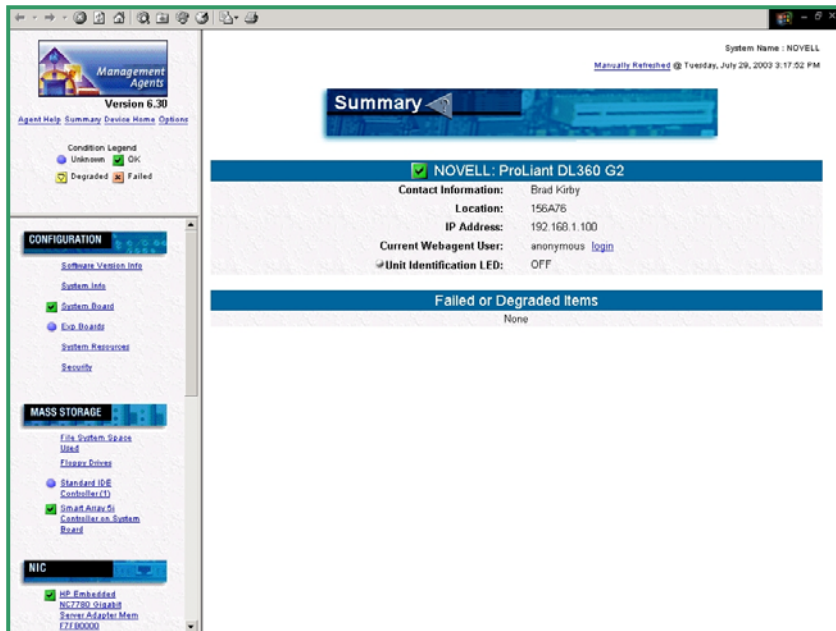


- NetWare is an important platform for ProLiant servers and an important platform for ProLiant manageability.
 - Continue to update key management capabilities for NetWare including fault management, inventory management, configuration management, and BIOS and driver delivery
- Not all new functionality will be ported to NetWare
 - Functionality delivered first for Windows and Linux
 - Functionality evaluated for NetWare ports based on customer demand and development resources
- Working with Novell to gain assistance in porting some key capabilities

NetWare Server Deployment

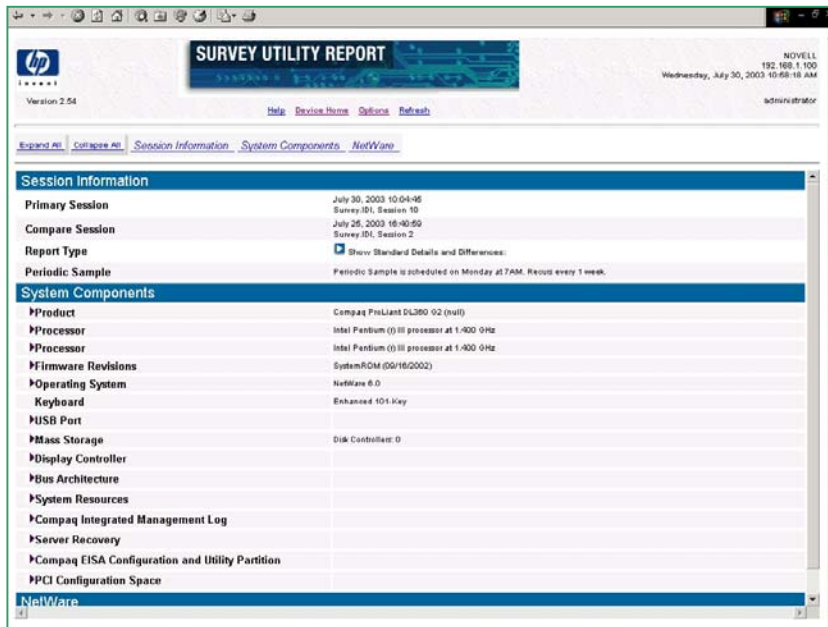
- Full support for NetWare assisted installation under SmartStart.
- Full support for SmartStart scripting toolkit to allow scripted configurations of hardware settings including RAID.
- Insight Diagnostics available in offline mode from SmartStart CD. Can be run remotely using RILOE/iLO virtual CD.
- SmartStart automatically lands NetWare PSP which contains drivers and agents for all hardware platforms.

NetWare Management Agents

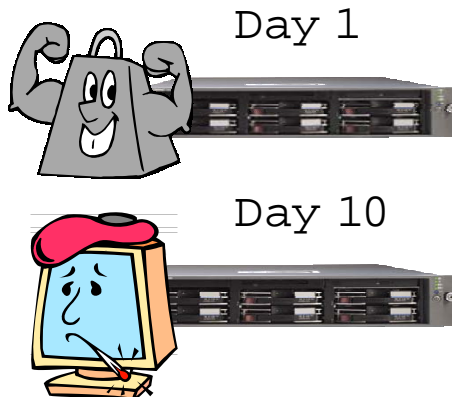


- Maintains overall hardware status for managed systems
- Sends hardware events to Insight Manager 7 console
- Displays processor and disk utilization statistics
- Displays list of running NLMs, users, and other OS related information (NetWare only)
- Provides access to RILOE/iLO
- Displays array controller status and disk rebuild after failure
- Displays NIC health and utilization statistics

NetWare Configuration Management via Survey

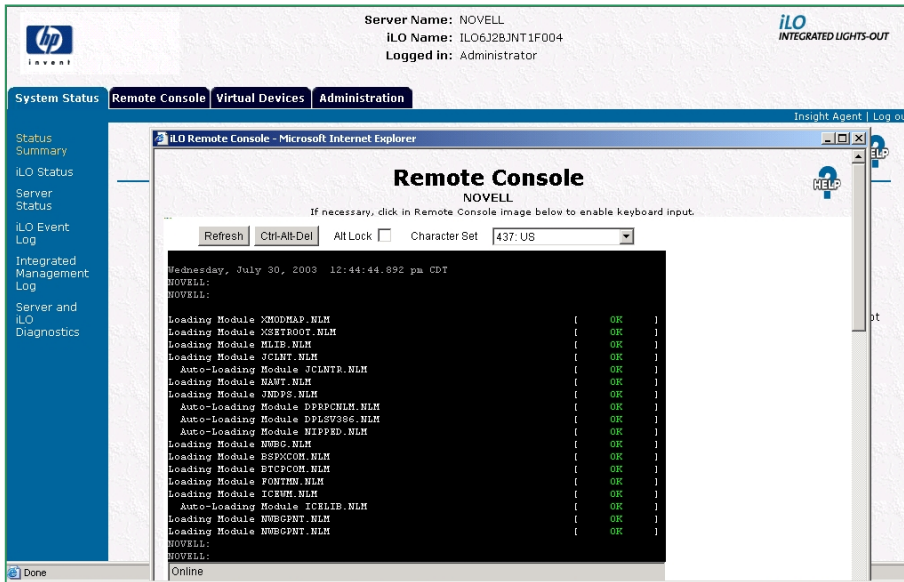


- Provides detailed single server inventory report
 - Hardware configuration
 - Operating system information including upgrades and patches
- Provides configuration snapshot comparisons
 - Detect changes to hardware and OS configurations over time
 - Supports up to 10 comparisons
 - Comparisons schedules at user-defined intervals



Pinpoint changes between day 1 and day 10

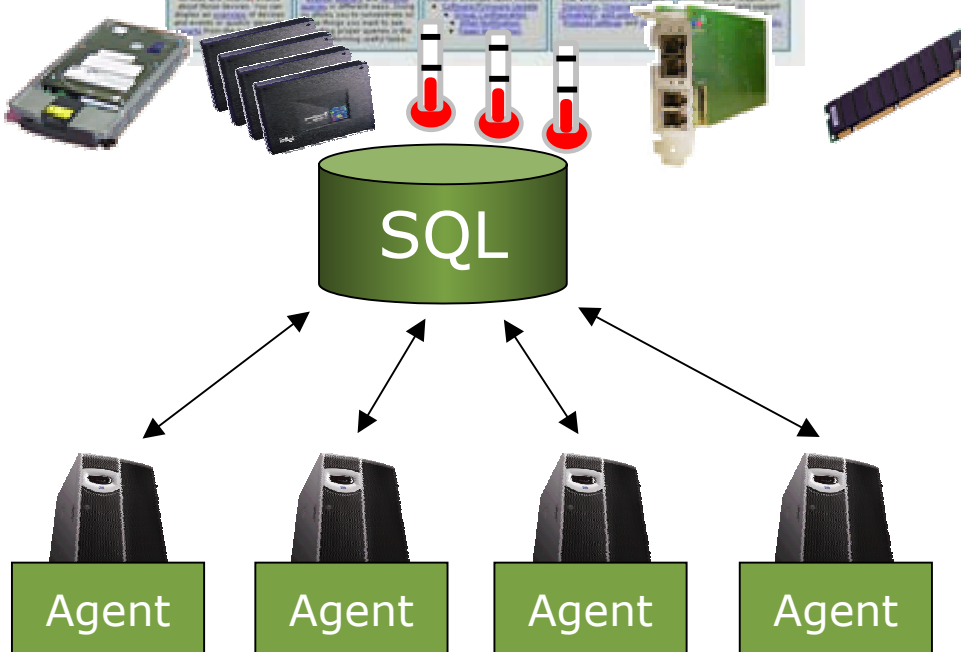
NetWare Remote Management via iLO/RILOE



- Delivers full access to NetWare console and GUI.
 - View system post
 - Access console remotely
- Restart system
- Toggle UID light
- View server logs
- User management and authentication integrated with eDirectory
- Leverage Virtual Floppy for BIOS updates (RILOE II only)

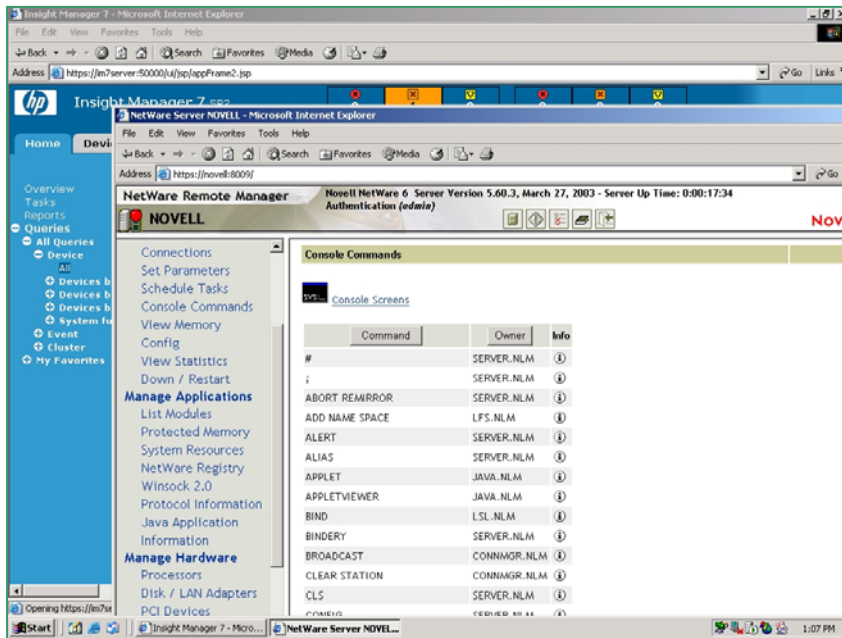
All remote sessions
Protected by 128 bit SSL

Managing NetWare Systems using Insight Manager 7



- Supported under NetWare
 - Automatic discovery and identification via IP and IPX
 - Status polling & agent launch
 - E-mail/pager notification
 - Inventory reports
 - MIB compiling and editing
 - RILOE/iLO discovery & launch
 - VCDB-based version control
 - Launched Novell tools
- Not supported under NetWare
 - Version control via Version Control Agent
 - Single login
 - Group configuration

Launching NetWare Remote Manager



Leverage the power of
Novell's management tools
From Insight Manager 7

- Insight Manager 7 provides access to NetWare Remote Manager from device page
- Make use of all Remote Manager capabilities from Insight Manager 7
 - Start/Restart system
 - Load and unload NLMs
 - Schedule tasks
 - View application health
 - View log files
 - Manage eDirectory
 - Access to remote console
 - More...

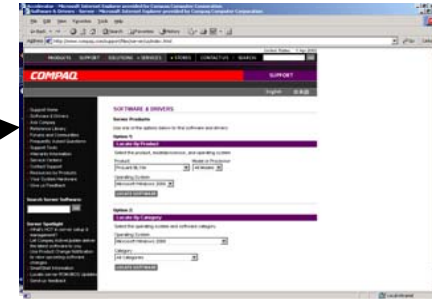
NetWare Version Control

- Currently most frequently requested feature from NetWare customers and field
- Let's discuss current version control capabilities and possible upgrades pending discussions with Novell

Networkware Version Control before the PSP

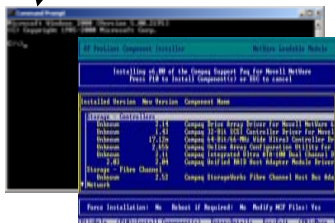


manually collects updates
the web

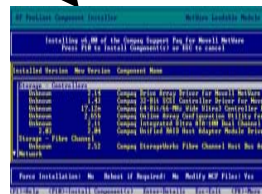


use legacy version control
techniques to understand updates
(supported by S3 server)

use command-line
techniques to script
deployment to
multiple servers



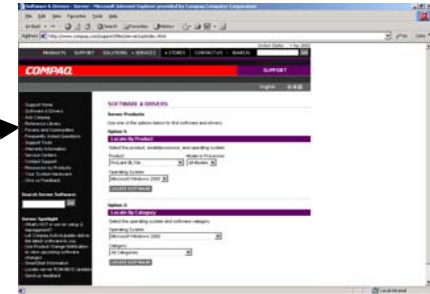
Perform remote updates
on a 1:1 basis using
Remote Console



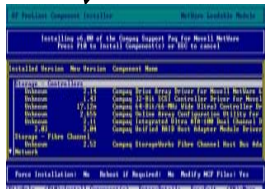
Netware Version Control Improves with PSP



manually collects updates
from the web



script the
deployment of the
PSP to multiple
servers



PSPs allow customers to
simplify the process by simply
collecting the tested bundle and
scripting the install for the entire
bundle (this significantly
reduces the need for Legacy
Version Control)

Netware PSP Overview

- The Netware PSP provides customers who do not use IM7 version control with a comparable experience between the Microsoft and Netware (soon to include Linux) environments

Availability of a tested set simplifies the collection and management of changes for Netware customers and significantly reduces the importance of Legacy Version Control

The scriptability of the PSP simplifies the updating of software on remote servers for Netware customers

The fact that the bundle is tested and approved by HP provides some intrinsic value for our Netware customers

NetWare VCA under investigation

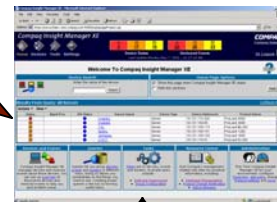
Customer



VCRM 2.0



IM7

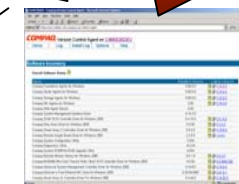
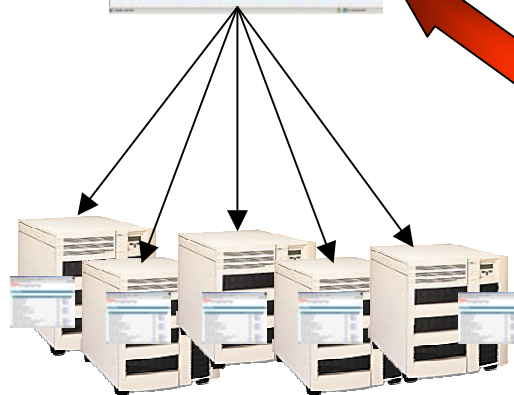


Active Update



VCRM

Netware
VCA



• Netware SW updates would be automatically delivered to VCRM. (already supported by current VCRM)

• Netware VCA would surface SW status for Netware servers to IM7.

• IM7 provides full-featured notification, decision, and deployment support analogous to Microsoft environment (and soon to be Linux)

Netware VCA Overview

- Netware VCA will integrate Netware customers into the full-featured version control solution provided through IM7.
- The current VCRM is ready to support Netware – all that needs to be done is to develop the Netware VCA.
- Novell has indicated they are willing to significantly help us in doing the development for the Netware VCA
 - Director of Product Management for Netware “Integrating into this IM7 solution sends the message that Novell is still a recognized enterprise platform by HP. Its worth whatever it costs to get this done.”
 - Development resources available in India to do the work.

Questions and Demonstration



HP WORLD 2003

Solutions and Technology Conference & Expo

Interex, Encompass and HP bring you a powerful new HP World.

