

Managing Storage Without Boundries: Managing Growth & Mitigating Risk...On A Budget

Steven A. Menges
CA BrightStor Solutions

- Efficiently managing storage and mitigating the risk of data loss are tremendous challenges today. As storage complexity increases and budgets flatten out or decrease, it becomes even more challenging. This session discusses these challenges and lays out a logical, defensible strategy to more efficiently manage storage and cost-effectively mitigate risk.

- **Introduction**
- **Storage Efficiency**
 - **What is Efficient Storage?**
 - **Planning for Efficiency**
 - **Managing for Efficiency**
 - **Automating for Efficiency**
- **Risk Mitigation**
 - **Determine value of data**
 - **Link threats to protections**
 - **Select appropriate solutions**

- Rapid storage growth and complexity
- Shrinking backup window
- No time for downtime
- Overburdened storage administrators
- New government-mandated regulations
- Multiple:
 - Platforms, databases, applications and storage types (DAS, NAS, SAN)
- Budget constraints

“How do I mitigate risk, keep up with growth and stay within budget?”

- Application / data must be 100% protected
- Maximum application / data availability
- Efficiently Handle Growth
- Hit the backup window
- Reduce operator oversight and intervention
- Increase operational efficiency
- Price/performance ratio which meets internal SLA requirements and budget constraints
- Meet regulatory requirements

“Storage everywhere...how to consolidate it ...how to protect it...how to stay within budget?”

Storage Solutions

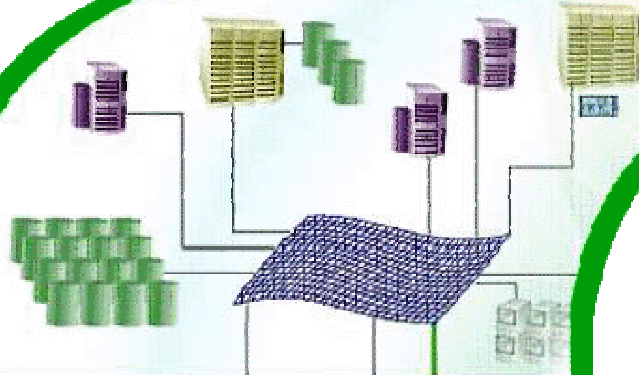
SRM

Backup
Recovery

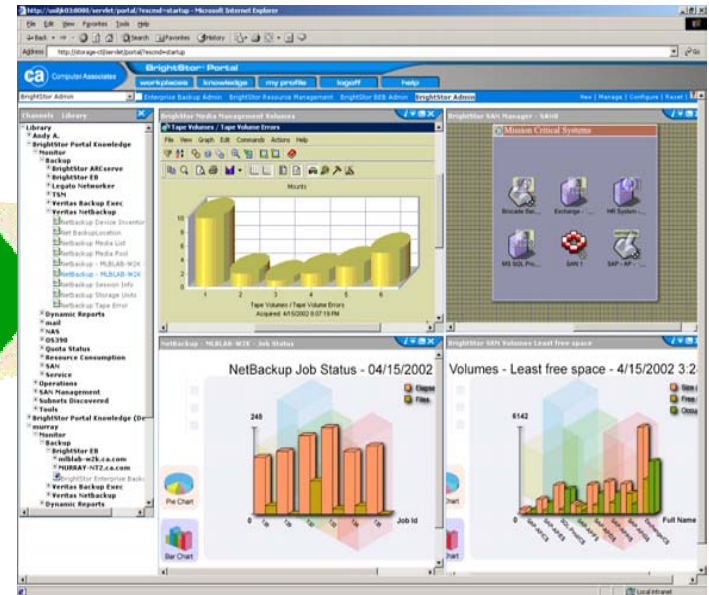
Media
Management

SAN
Management

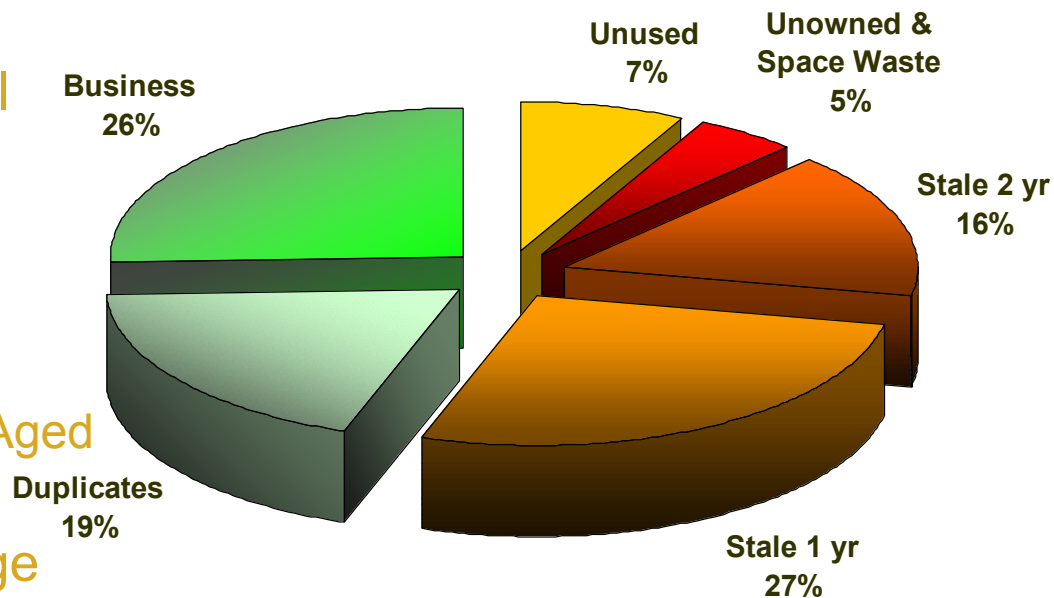
NAS
Management



Storage Technology

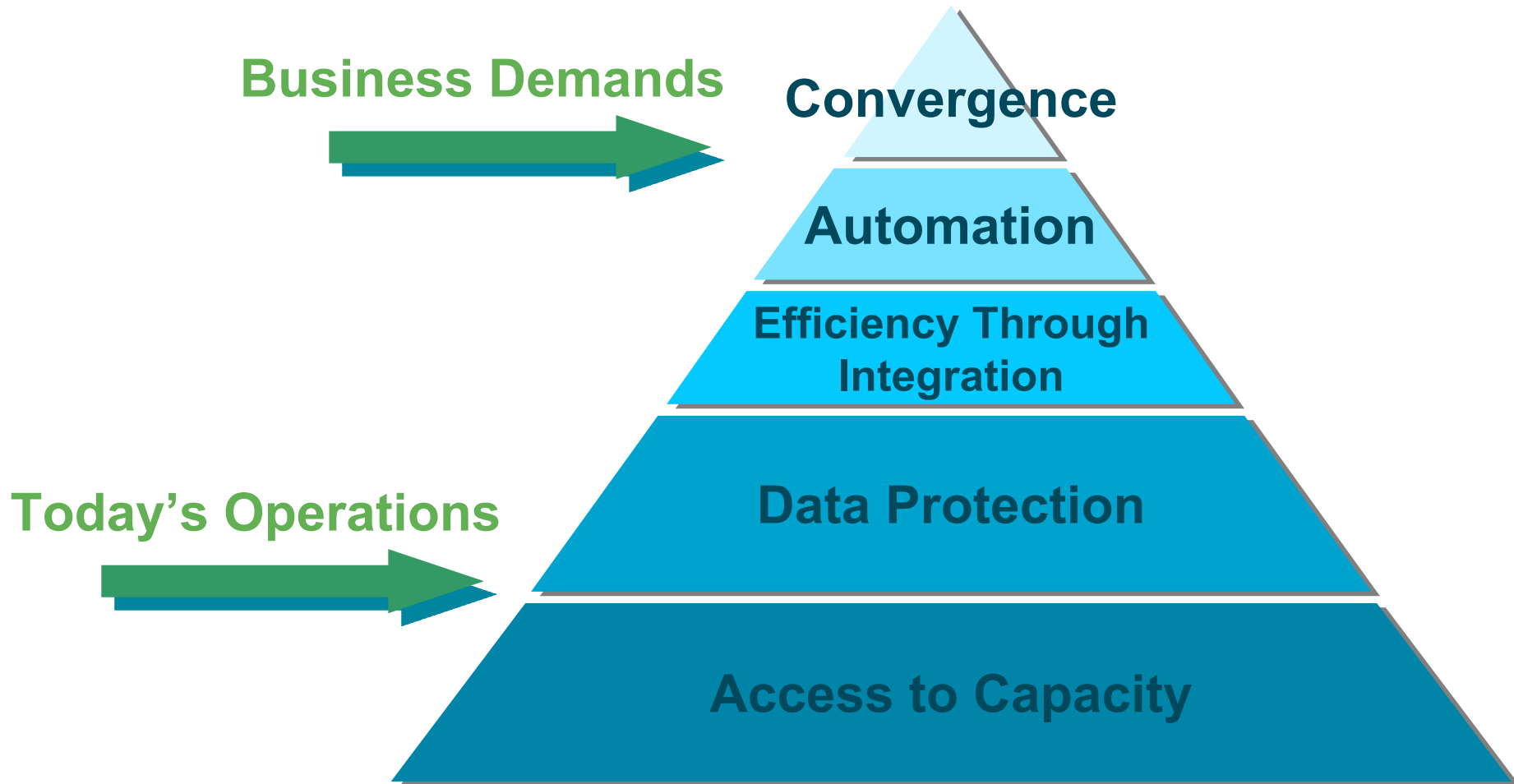


- Storage Growth Inevitable
 - % of Hardware Budget
 - % of Operation Cost
- Volume Frustrates Retrieval
 - Increases User Driven Replication
- Stub-style HSM Does Not Scale
 - Think Tiered Storage Not Aged Storage
- Oversupply Causes Wastage



Managing Storage is about Managing Behavior

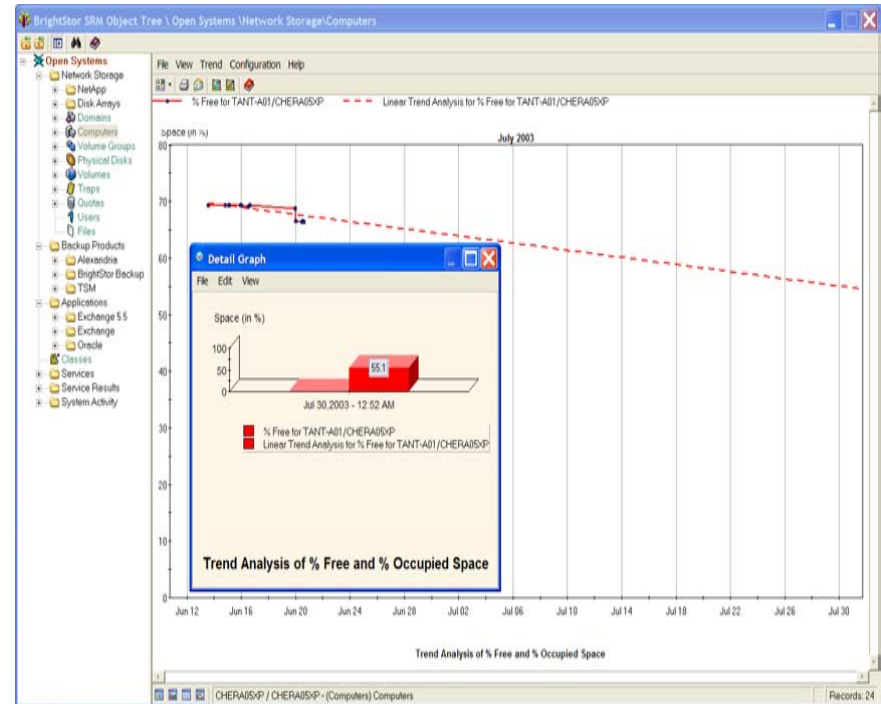
Storage Hierarchy of Needs



Planning for Efficiency

Storage Capacity Planning

- Proactive capacity planning ensures data and application availability
 - Exception-based management (threshold monitoring)
 - Trending of historical data and analysis of storage patterns
 - Tracking of free space on critical volumes
 - Detailed, point-in-time growth comparisons

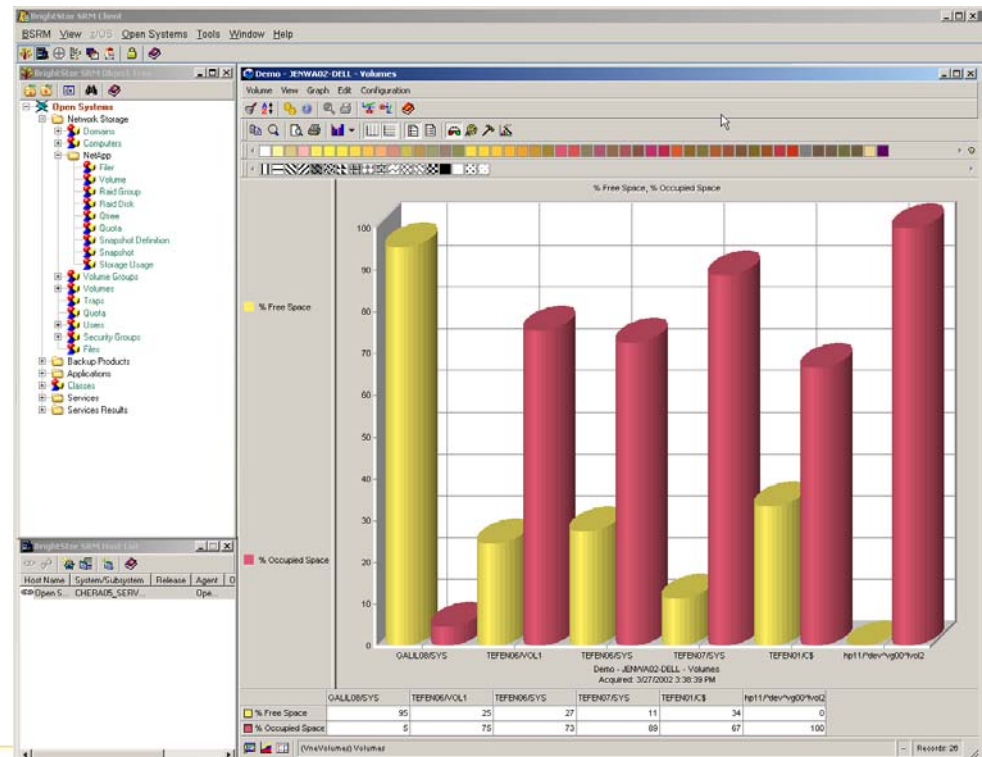


Storage-Intensive Applications

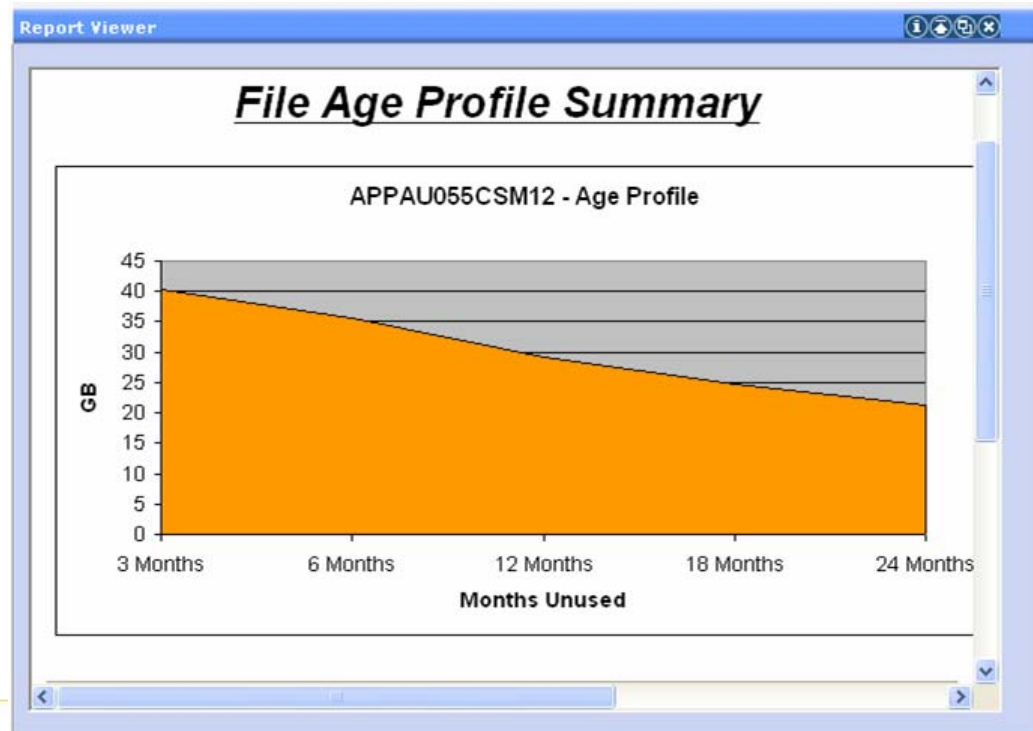
- Which application is the major storage space user?
- When will new storage capacity be required to support data growth?
- Can I manage the same type of applications as one logical unit/object?
- Can I manage my backup/recovery, database or messaging applications?

Storage-Intensive Applications

- Application-based storage management
 - Backup/recovery
 - Database
 - Messaging/collaboration
 - Enterprise storage automation
 - Storage chargeback



- What are the file types, applications and data that must be migrated?
- Which are the most accessed objects and where are they located?
- Who are the biggest storage users that need to be accommodated?



Backup Planning and Management

- How much data has to be backed up?
- What data sets have to be backed up?
- Should certain files be migrated or archived?
- How much storage capacity is required for backups?
- Are there duplicate files that are taking up additional storage?

BrightStor Storage Resource Manager

MP3_QUERY

FILE_FULL_NAME	FILE_OWNER_NAME	FILE_SIZE	SUM_FILE_SIZE
\\DONT1000\C\$\Movies\vp505enu.mp3	Administrators	10,188.03 KB	10,188.03 KB
\\DONT1000\C\$\Movies\qws2270.mp3	Administrators	1,418.82 KB	1,418.82 KB
\\DONT1000\C\$\Movies\demopck.mp3	Administrators	2,238.06 KB	2,238.06 KB
\\DONT1000\C\$\Movies\ExpenseIT.mp3	Administrators	520.00 KB	520.00 KB
\\DONT1000\C\$\Movies\VNE_LIC.mp3	Administrators	21.50 KB	21.50 KB
\\DONT1000\C\$\Movies\Scenario304.mp3	Administrators	56.48 KB	56.48 KB
\\DONT1000\C\$\Movies\bmec.mp3	Administrators	38.88 KB	38.88 KB
\\DONT1000\C\$\Movies\adsmo dbc.mp3	Administrators	3,321.07 KB	3,321.07 KB
\\DONT1000\C\$\Movies\ws_pfle.mp3	Administrators	690.50 KB	690.50 KB
\\DONT1000\C\$\Movies\calogo.mp3	Administrators	322.88 KB	322.88 KB
\\DONT1000\C\$\Movies\sddpc.mp3	Administrators	19,660.91 KB	19,660.91 KB
\\DONT1000\C\$\Movies\highground32.mp3	Administrators	17.41 KB	17.41 KB
\\DONT1000\C\$\Movies\msoffice.mp3	Administrators	0.10 KB	0.10 KB

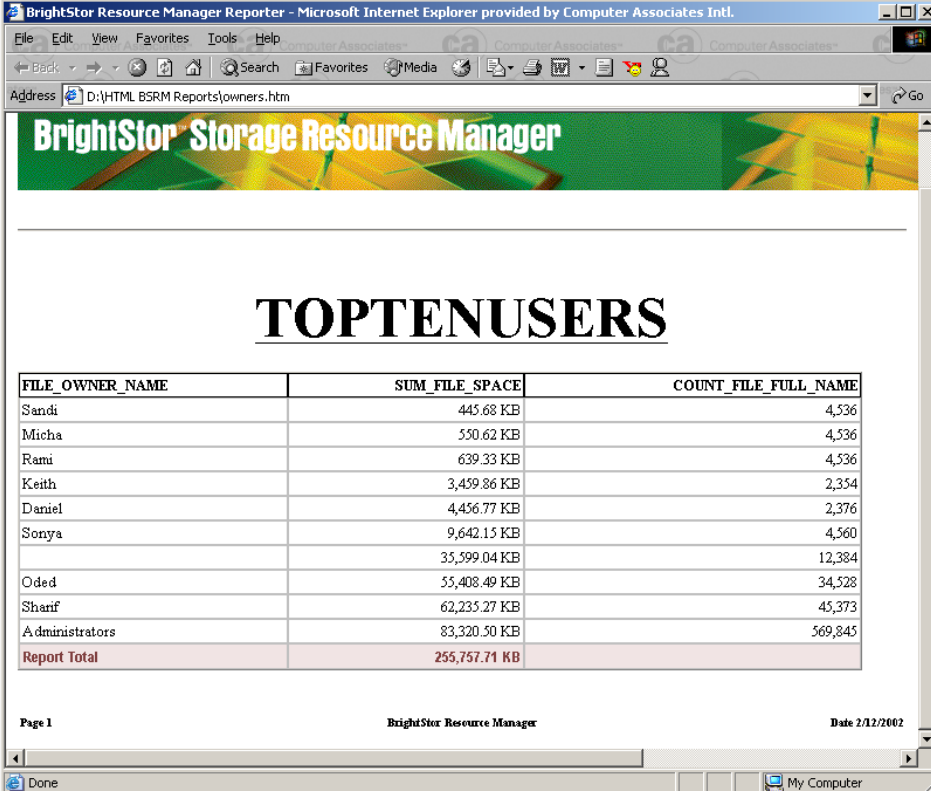
BrightStor Storage Resource Manager

Duplicate Files

File Name	File Size	File Owner	File Full Name
beprtrial.exe	9,935.22 KB	Administrators	\\DANIEL-W2K0C\$\My Download Files\beprtrial.exe
	9,935.22 KB	Administrators	\\DANIEL-W2K0C\$\My Download Files\news\beprtrial.exe
Summary for beprtrial.exe	19,870.44 KB		
ca_vantage_internal_training.ppt	1,420.00 KB	Administrators	\\DANIEL-W2K0C\$\My Download Files\ca_vantage_internal_training.ppt
	1,420.00 KB	Administrators	\\DANIEL-W2K0C\$\My Download Files\olds\ca_vantage_internal_training.ppt
Summary for ca_vantage_internal_training.ppt	4,260.00 KB		
ca_vantagene_pds.pdf	1,424.69 KB	Administrators	\\DANIEL-W2K0C\$\My Download Files\news\ca_vantagene_pds.pdf
	1,424.69 KB	Administrators	\\DANIEL-W2K0C\$\My Download Files\ca_vantagene_pds.pdf
	1,424.69 KB	Administrators	\\DANIEL-W2K0C\$\My Download Files\olds\ca_vantagene_pds.pdf
Summary for ca_vantagene_pds.pdf	4,274.07 KB		
	5,823.99 KB	Administrators	\\DANIEL-W2K0C\$\My Download Files\sg246110.pdf

Managing for Efficiency

- Who are the top 10 users in XYZ department?
- Are there any users on server XYZ who have MP3 files?
- How can I notify users who have exceeded their quotas?
- How can I effectively implement enterprise-wide policies for user space quotas?



BrightStor Storage Resource Manager

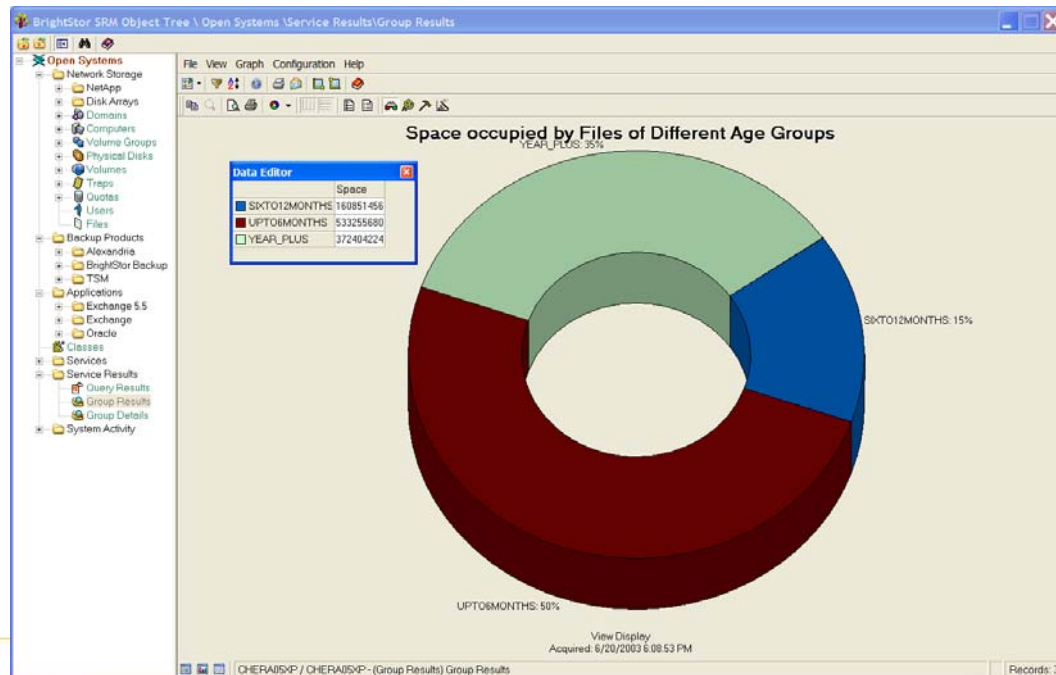
TOPTENUSERS

FILE_OWNER_NAME	SUM_FILE_SPACE	COUNT_FILE_FULL_NAME
Sandi	445.68 KB	4,536
Micha	550.62 KB	4,536
Rami	639.33 KB	4,536
Keith	3,459.86 KB	2,354
Daniel	4,456.77 KB	2,376
Sonya	9,642.15 KB	4,560
	35,599.04 KB	12,384
Oded	55,408.49 KB	34,528
Sharif	62,235.27 KB	45,373
Administrators	83,320.50 KB	569,845
Report Total	255,757.71 KB	

Page 1 BrightStor Resource Manager Date 2/12/2002

Storage Usage and Chargeback

- How much storage space is consumed by user or department?
- Can I measure the storage capacity consumption of users and departments?
- I have no intention of adding a chargeback application, but can I meter storage consumption?



Welcome spadmin!

- Administration
 - Catalog Builder
 - SLA Management
 - Service Metering
 - Billing Management
 - Provisioning
- Departments
- Applications Management
- Resource Assignment

- Personalization
- Reports
- Search

- Messages
- My Applications
- My Tasks
- Help
- Logout



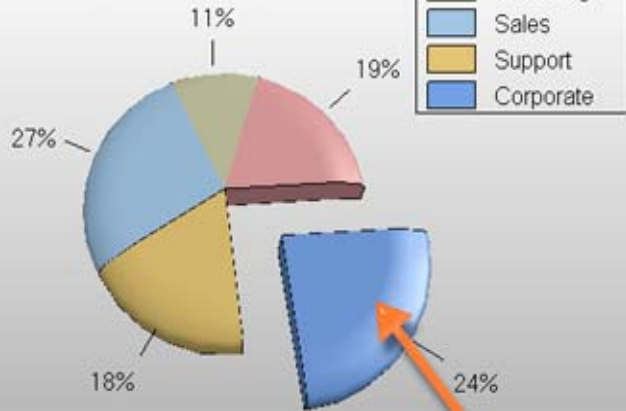
The Universal Corp.



iCan Sys Admin

Label: Corporate Value: 32.79

Storage Usage By Account



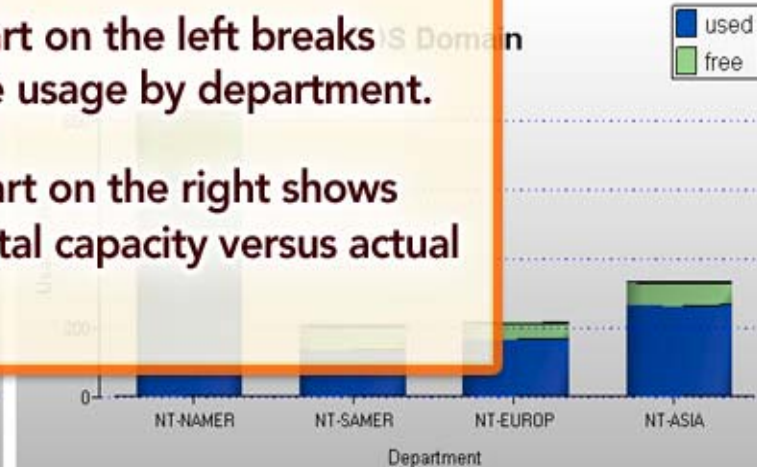
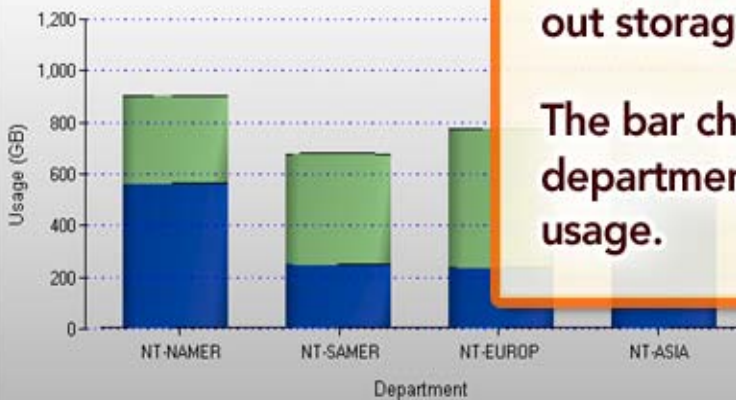
Occupied/Free Space By Account



The pie chart on the left breaks out storage usage by department.

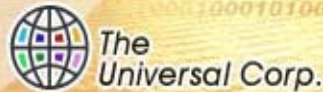
The bar chart on the right shows departmental capacity versus actual usage.

NT Domain



- Welcome spadmin!
- Administration
 - Catalog Builder
 - SLA Management
 - Service Metering
 - Billing Management
 - Provisioning
- Departments
- Applications Management
- Resource Assignment

- Personalization
- Reports
- Search
- Messages
- My Applications
- My Tasks
- Help
- Logout



iCan Sys Admin

Tenant Profile Accounts Billing Info

Select Account Marketing:account01

Item Summary

Charges

Date	Description	Metric Value	Rate	Amount
Total Storage Usage - Exchange 2000 Servers				
Storage				
5/16/2002	Total Usage	936,478 Mbytes	x \$ 0.0095 Dollars	\$ 8,896.54
Total Storage Usage - Oracle Databases				
Storage				
5/17/2002	Total Usage	1,846,295 Mbytes	x \$ 0.01 Dollars	\$ 18,462.95
Total Storage Usage - Unix				
Storage				
5/17/2002	Total Usage	2,760,374 Mbytes	x \$ 0.0078 Dollars	\$ 21,530.91

This invoice shows charges for 3 different applications. Storage volume and rates are detailed for each. Notice the credit for hardware repair. The BrightStor - iCan Solution produces these invoices automatically.

Adjustments

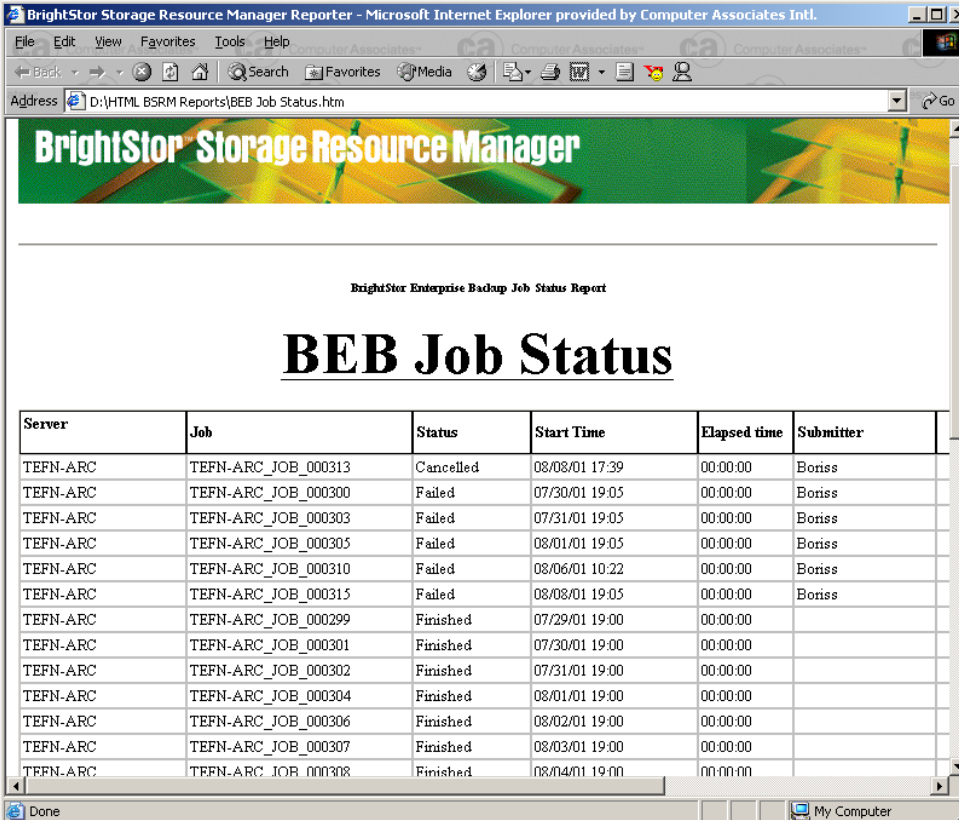
Date	Description	Amount
5/17/2002	Hardware Repair Service violation	\$- 200.00

Payments

Date	Description	Amount
No payments for this invoice.		

Remaining Balance: \$ 48,690.40

- Were yesterday's backup jobs successful?
- Is there enough capacity to support server growth?
- Is there sufficient disk storage capacity to support application data growth requirements?



BrightStor Storage Resource Manager Reporter - Microsoft Internet Explorer provided by Computer Associates Intl.

Address <D:\HTML\BSRM\Reports\BEB Job Status.htm>

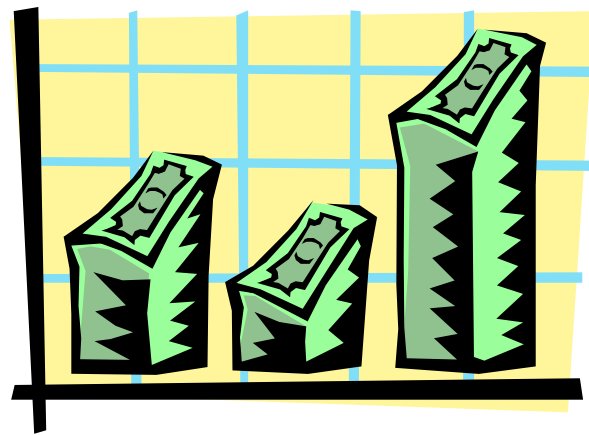
BrightStor Storage Resource Manager

BrightStor Enterprise Backup Job Status Report

BEB Job Status

Server	Job	Status	Start Time	Elapsed time	Submitter
TEFN-ARC	TEFN-ARC_JOB_000313	Cancelled	08/03/01 17:39	00:00:00	Boriss
TEFN-ARC	TEFN-ARC_JOB_000300	Failed	07/30/01 19:05	00:00:00	Boriss
TEFN-ARC	TEFN-ARC_JOB_000303	Failed	07/31/01 19:05	00:00:00	Boriss
TEFN-ARC	TEFN-ARC_JOB_000305	Failed	08/01/01 19:05	00:00:00	Boriss
TEFN-ARC	TEFN-ARC_JOB_000310	Failed	08/06/01 10:22	00:00:00	Boriss
TEFN-ARC	TEFN-ARC_JOB_000315	Failed	08/08/01 19:05	00:00:00	Boriss
TEFN-ARC	TEFN-ARC_JOB_000299	Finished	07/29/01 19:00	00:00:00	
TEFN-ARC	TEFN-ARC_JOB_000301	Finished	07/30/01 19:00	00:00:00	
TEFN-ARC	TEFN-ARC_JOB_000302	Finished	07/31/01 19:00	00:00:00	
TEFN-ARC	TEFN-ARC_JOB_000304	Finished	08/01/01 19:00	00:00:00	
TEFN-ARC	TEFN-ARC_JOB_000306	Finished	08/02/01 19:00	00:00:00	
TEFN-ARC	TEFN-ARC_JOB_000307	Finished	08/03/01 19:00	00:00:00	
TEFN-ARC	TEFN-ARC_JOB_000308	Finished	08/04/01 19:00	00:00:00	

- Increased disk utilization
- Improved storage management (staffing)
- Less floor space
- Improved disaster recovery capabilities
- Improved data recovery options
- Increased performance
- Improved backup operations

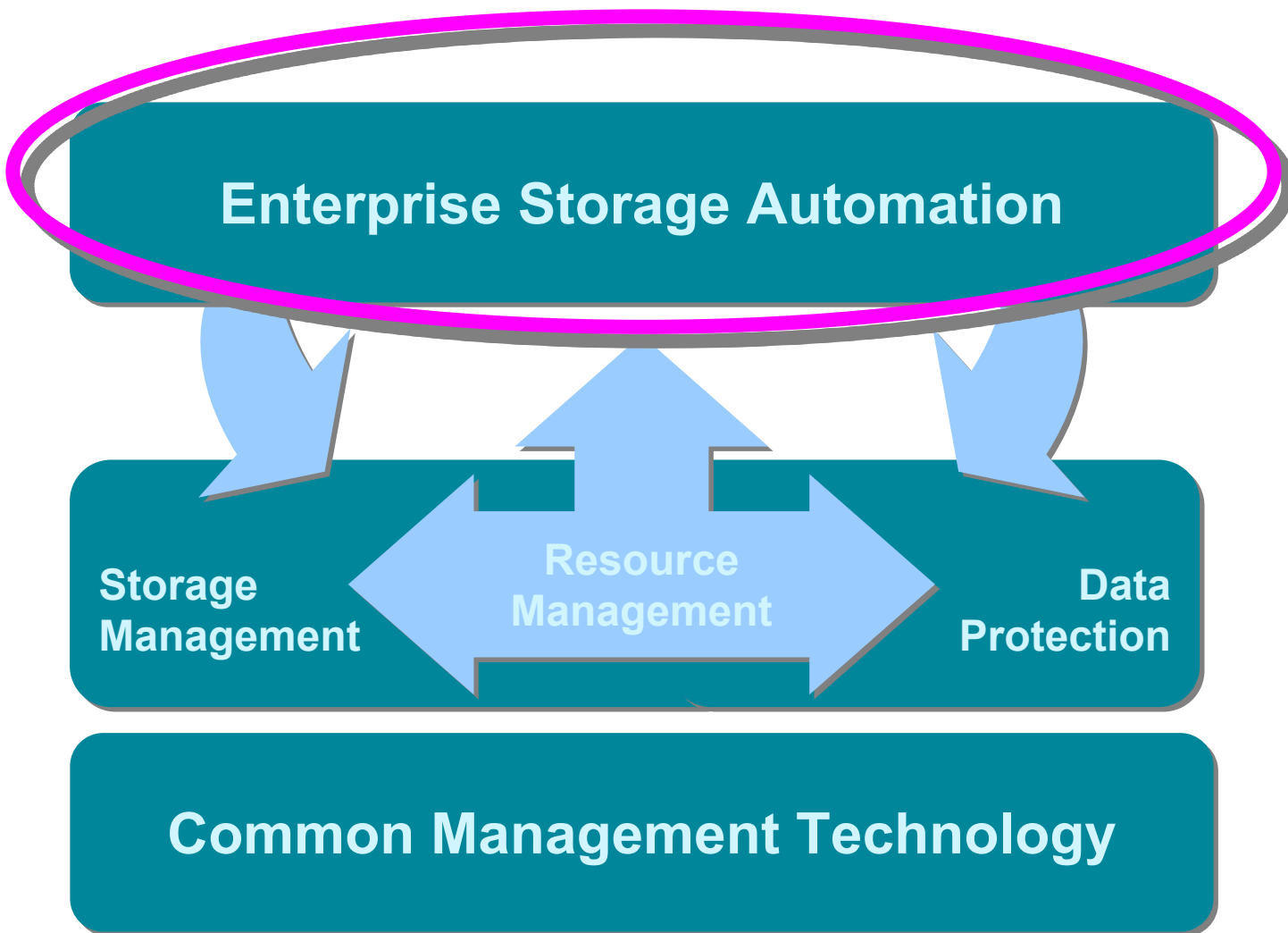


Potential Initial HW Cost Savings

	Scenario 1	Scenario 2	Scenario 3	Scenario 4
Capacity (TB)	50	50	100	100
Storage HW Costs (\$/GB)	\$60	\$60	\$60	\$60
Utilization Rate	30%	40%	30%	40%
Underutilized Capacity (TB)	15	10	30	20
Potential Cost Avoidance	\$900,000	\$600,000	\$1,800,000	\$1,200,000

Notes: Objective of 60% utilization

Automating for Efficiency



The screenshot displays the BrightStor SRM Portal interface. At the top, there's a navigation bar with 'workplaces', 'knowledge', 'my profile', 'logout', and 'help'. Below it, a dropdown menu shows 'Volumes Least Free' selected. On the left, a 'Channels Library' sidebar lists various categories like 'BrightStor Portal Knowledge', 'Monitor', 'Backup', 'Quota Status', and 'Resource Consumption'. The main content area shows two reports: 'Physical Disks by Free Space' and 'Volumes - Least Free Space'. The first report includes a table with columns for Full Name, Device Number, and Block Size. The second report also includes a table with columns for Full Name, Device Number, Block Size, and another column. Callout boxes highlight specific features: 'Streamline administration with workspaces tailored to role or activity' points to the navigation bar; 'Relevant, timely information delivered to the desktop' points to the report titles; and 'Organize storage applications for easy accessibility' points to the sidebar menu.

Streamline administration with workspaces tailored to role or activity

Full Name	Device Number	Block Size
BPDEVLAB01/PhysicalDrive00	512.00	38162.22 0.00
BPDEVLAB04/PhysicalDrive00	512.00	38162.22 0.00
BPDEVLAB06/PhysicalDrive00	512.00	38162.22 0.00
BPDEVLAB05/PhysicalDrive00	512.00	38162.22 0.00

Relevant, timely information delivered to the desktop

Full Name	Device Number	Block Size	
Bpdevlab01	BPORALTSTDMN/BPDEVLAB01		
Bpdevlab05	BPORALTSTDMN/BPDEVLAB05		
Bpdevlab04	BPORALTSTDMN/BPDEVLAB04		
Bpdevlab06	BPORALTSTDMN/BPDEVLAB06		

Organize storage applications for easy accessibility

My Tasks

Tasks Queue : admin

[User (3)] [Group (6)] [Completed (97)]

Task Name	Posted
Approve DB Dynamic Provisioning	2003-7-2 15:16:40
BSM: Allocate New LUN on SAN	2003-7-1 08:26:36
BEB: Begin New Backup Job	2003-7-1 08:42:58

BPAM Process Messages

100% complete

ID	Message	Posted By
2196	BPAM: Dynamic provisioning process started.	System
2197	BPAM: Disk array selected based on policy [IBM-Shark].	System
2198	BSM: LUN created (size=120GB) and LUN mask set.	System
2199	BP: Rescanning disks on host for web order entry DB.	System
2200	BP: Expanding volume (new size=240GB).	System
2201	BEB: Adjusted backup policy for backup window SLA.	System
2202	BPAM: Dynamic provisioning process completed successfully.	System

Business Process DB Real-time Monitor

Monitor | Data Source

Current

History

Options

 Current
 History
 Log Scale
 Refresh (s) 1

Legend

- Email
- Web Order
- Procurement
- Helpdesk

Task Console

BrightStor SRM Volume Usage Report

Jul 3 Wednesday 15:17:2 2003

BrightStor SRM Volume Usage Report

SRM Volume Report

BrightStor SRM Volume Usage Report

Jul 3 Wednesday 15:17:2 2003

BrightStor SRM Volume Usage Report

- Procure1(K:)
- Procure2(K:)
- Procure3(K:)
- Procure4(K:)
- Procure5(K:)
- Procure6(K:)
- OrderDB1(G:)
- OrderDB2(H:)
- OrderDB3(I:)
- OrderDB4(J:)
- Email(D:)
- Email(E:)
- Email(H:)
- Email(K:)
- Email(V:)
- Email(X:)
- Email(M:)
- System(C:)

- Encapsulation of any operational procedure
- Out of the box 'Best Practice Definitions'
 - Customize to your environment
 - Create new
- Workflow driven execution
- Fully automated, or not

Process Instance Details

Instance ID	1406	ID	319
Process Name	On Demand Storage : Dynamic Provisioning 4.0 (automated)		
Description	This process can be used to allocate additional SAN storage space to host machines running low on disk space.		
Author	admin		
Responsible	admin		
Published	2003-07-09 17:18:58.433		
Status	Completed		
Launched By	admin		
Launched	2003-07-09 17:18:59.39		
Ended	2003-07-09 17:57:27.86		

- Data Fields
- View Messages
- Acknowledge All Messages
- Clear All Messages
- Refresh
- Close

Activities

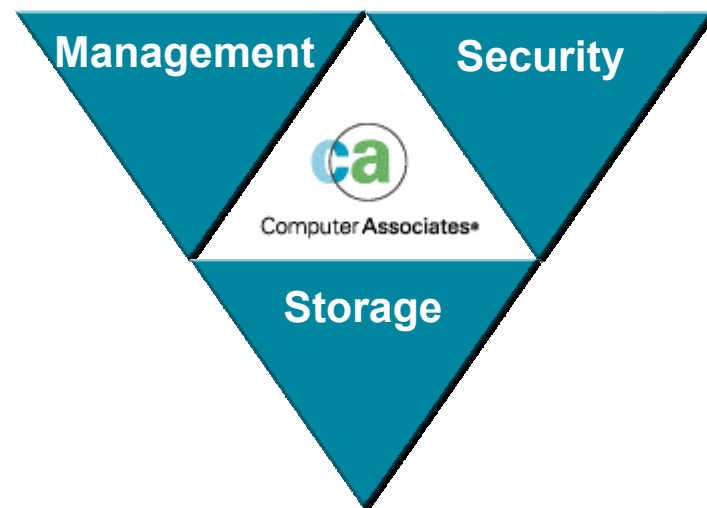
	Name	Description	Priority	Status	Performer	Posted	Launched	Ended
	Email Alert Administrator	This automated method will send an email alert to your SAN administrator indicating that new storage will be allocated to your host machine.	2	Completed	SYSTEM (SYSTEM)	2003-07-09 17:18:59.717	2003-07-09 17:19:00.017	2003-07-09 17:19:02.03
	NT - Verify Volume Running Low	This activity requires you to verify the event based launch of this practice.	2	Completed	admin (user)	2003-07-09 17:19:02.563	2003-07-09 17:20:54.17	2003-07-09 17:21:47.297
	BSM - Choose Disk Array	This activity requires you to choose from what disk array storage should be allocated.	2	Completed	admin (user)	2003-07-09 17:21:47.53	2003-07-09 17:21:55.86	2003-07-09 17:25:28.11
	BSM - Create / Allocate New LUN	This activity will locate or create a new LUN (if it does not exist) on the chosen disk array and allocate the space to the host	2	Completed	SYSTEM (SYSTEM)	2003-07-09 17:25:28.28	2003-07-09 17:25:28.39	2003-07-09 17:27:07.623

- Dynamic resource management
- Storage Provisioning
- Volume Management
 - Space Reclamation
- Storage Policies & Service Level Agreements
- Disaster Recovery & Business Continuity
- SAN Change Management
- Media Lifecycle Management

- Solutions that respond to business conditions
- Business continuity
- Operational efficiency
- Enables next generation storage management
 - Shift from backup to restore

Automation – Problem Simplification

- Enable Business to focus on Business
- Allows convergence
 - Within Storage
 - Between Enterprise Management disciplines
 - Natural maturation of industry



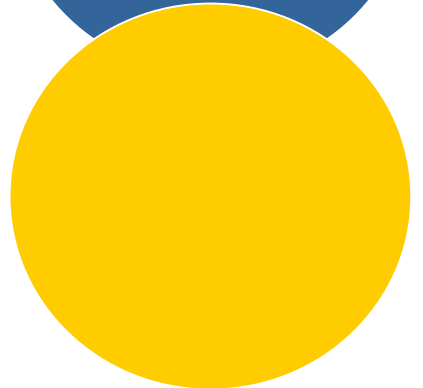
Storage Risk Mitigation

Storage Risk Mitigation

- Maturing of Data Protection
- Applies Proven Methodology
- Cost Focused Discipline
- Exploits Existing Investments
- Simplifies Disaster Recovery and Business Continuity Decisions

Have a clear, logical, defensible strategy to mitigate risk AND stay within budget

- Changed Threat Definition
- Storage Blending with Security and Enterprise Management
- Standards and Law
 - HIPAA, SEC, Sarbanes-Oxley
 - Basel II



- No Longer Simply Data Recovery
 - How Quickly Can I Restore?
 - What Window of Data Can I Lose?
 - What Should My Backup Window Be?
- Technology Evolution
- Minimize Storage Investment

Deliver Storage Risk Mitigation

1
Determine
value of
data

2
Link threats
to
protections

3
Select
appropriate
solutions

All Data is *Not* Equal

- Data has Unique Business Value
- IT Departments Must Understand the Relative Value of Data:
 - Cost of Downtime
 - Cost of Lost Data

Data Qualities

Criticality of Data



Business Value

- IT Must Identify Potential Risks
- Data has Acceptable Risks
- Select Mitigations to Protect Against Unacceptable Risks








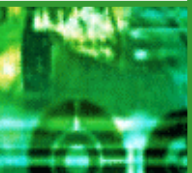

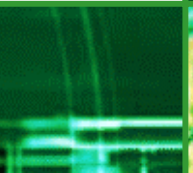


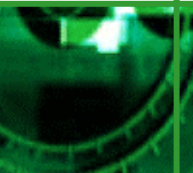
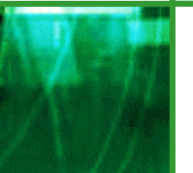



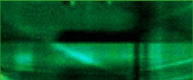




Low Risk

High Risk

Relate Threats to Mitigations

Local Mirror & Replicate Remote Mirror & Replicate PIT Snapshot Data Backup & Recovery Bare-Metal Backup & Recovery Network, System, Appl'n Fail-over Resource Mgmt, Appl'n Fail-over Security Mgmt

Disasters								
Viruses & Trojans								
Hardware/Software failures								
Hacking/DO S attacks								
Human error								
Data corruption								

Select Cost-Effective Protection

- Value of Data vs. Cost of Protection
- Many Data Protection Solutions, Not Just One
- Data Value Changes Over Time ... Data Protection Must Change Too



- Don't Waste \$10,000 Protecting Data Worth \$1,000
- Don't Risk Data Worth \$100,000 by Protecting it with \$1000 Solution



Data



Protection

- Enterprise Always a Mixture of Distributed and Centralized Environments!
- ‘One Size Fits All’ - Wasteful
- Integration is KEY
 - Reduces Overhead While Mitigating Risk



Data Protection Solutions

Integration Services

**Mainframe
Backup & Recovery
Solutions**

**Enterprise-class
Backup &
Recovery
Solutions**

**Departmental-
Level Backup
& Recovery
Solutions**

**PC/Laptop
Backup &
Recovery
Solutions**

Classify Data Example

- Class A: Critical Mainframe/Open Systems Applications (Financial Systems, CRM, etc.)
- Class B: Supporting Apps. (Payroll, E-mail, branch office servers, web servers, etc.)
- Class C: Lower Priority Apps. (Departmental servers, PCs/Laptops (filtered), etc.)
- Class D: Lowest priority apps, etc.

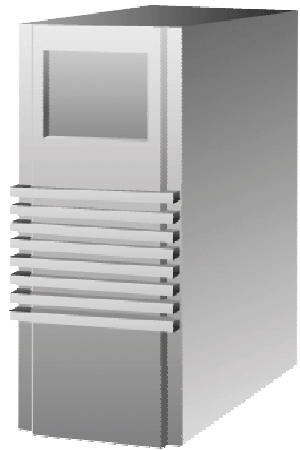
Apply Protection Example

- Class A: Mainframe & Enterprise-class Backup & Recovery Solutions
- Class B: Enterprise-class and Departmental-level B&R Solutions
- Class C: Departmental-level and Mobile Computing B&R Solutions
- Class D: No backup (or user-initiated only)

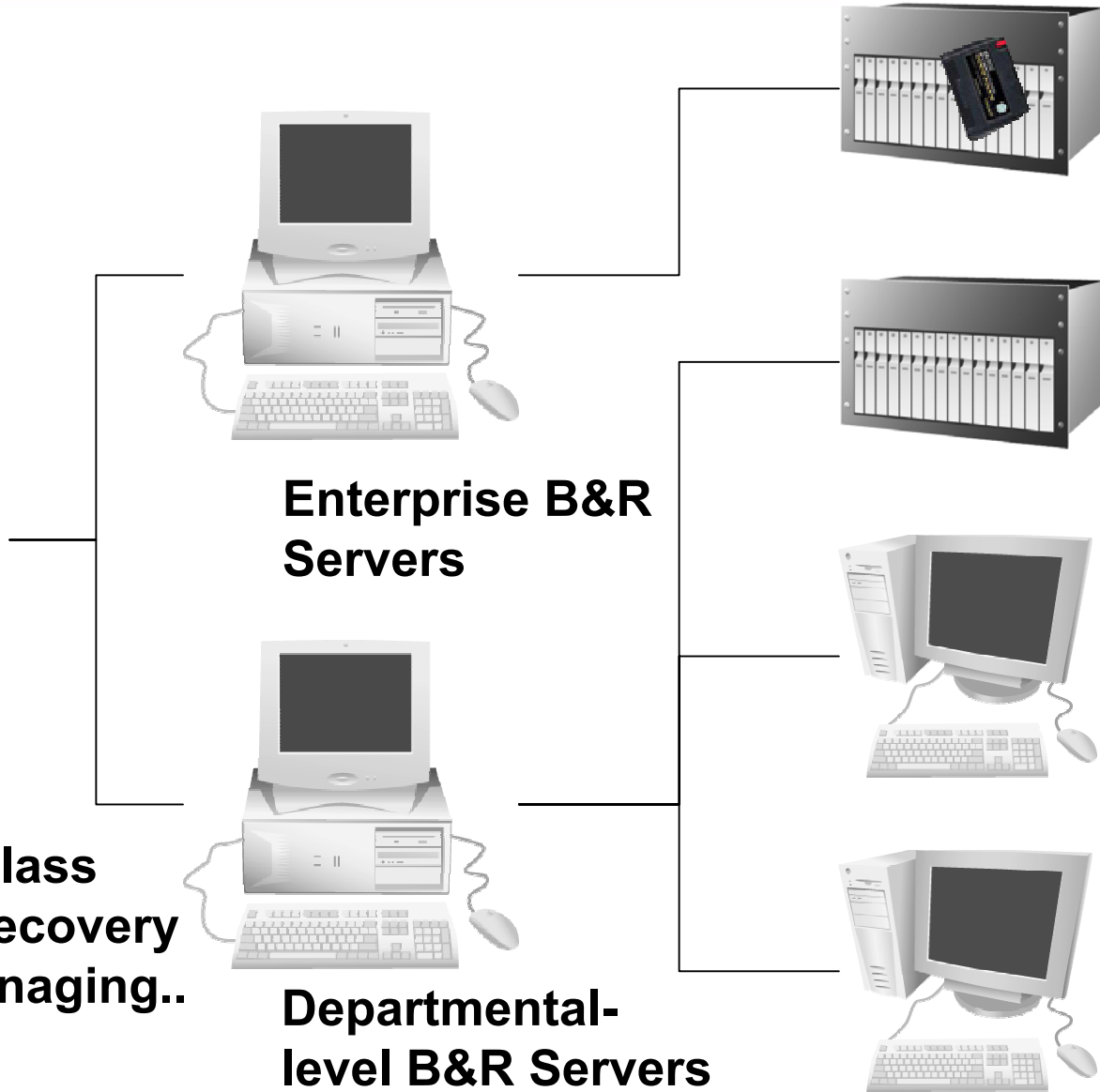
Apply Protection Example

- Class A: Snapshot hourly and copy to “hot site” AND daily off-site tape vaulting/archive (for x yrs); each server has bare-metal DR capability
- Class B: Full backup every 4 hours to tape, daily off-site tape vaulting (x# yrs)
- Class C: Weekly full, daily incremental tape backup (local only)
- Class D: No backup

Integration Gives Flexibility



**Enterprise-class
Backup & Recovery
Solution managing..**



**Enterprise B&R
Servers**

**Departmental-
level B&R Servers**

**Enterprise
B&R Agents**

**Departmental
B&R Agents**

Storage Risk Mitigation

- Backup Evolving into Mitigation
- Balances Data Value Against Cost
- Critical Success Factor - Built-in Integration
- Storage, Security and Enterprise Merging
- Contains Hardware and Software costs
- Logical, Flexible, Defendable Strategy

*Check out the “Storage Risk Mitigation”
Whitepaper for more information*

CA BrightStor HP Support

- Key New Support:
 - BrightStor Enterprise Backup v10.5 for HP-UX and Tru64 - introduced May 2003
 - Integrated management of hardware snap-shot (StorageWorks Business Copy) for HP XP arrays
 - BrightStor ARCserve Backup v9 support for HP-UX and Tru64servers
- Ongoing Support
 - Broad Support for HP Storage, Server and PC Products (see on-line "Certified Device Lists)

Managing Storage Without Boundries

Steven A. Menges
CA BrightStor Solutions