



Migrating from Insight Manager to HP Systems Insight Manager



Session 3753





Why upgrade to HP Systems Insight Manager from Insight Manager (Win32)?

- All the features of Insight Manager plus...
- Web-based – access from anywhere
- Multi-user – devices & settings all in one place
- Version Control – multi-system and performs software deployments
- Strong security protected by digital certificates
- On-screen reports
- Fully supported
- Insight Manager (Win32) no longer works with agents 6.4 and later

Why upgrade to HP Systems Insight Manager from Insight Manager 7?



- All the features of Insight Manager 7 plus...
- Enhancements to:
 - Industry-leading cross platform management capabilities
 - Robust integration with HP and off-the shelf management tools
 - Role-based security
 - Improved set-up and ease of use
- HP Systems Insight Manager works with your existing HP management agent infrastructure – no agent upgrade required!



HP Systems Insight Manager

Compelling value for existing HP customers

Feature		Insight Manager 7		Insight Manager (Win32)
Central management server	New	Linux, HP-UX	New	Linux, HP-UX
Cross-platform management	New	HP-UX	New	HP-UX
Auto-discovery	✓		New	
Secure remote management	✓	Improved – SSH	New	
Role-based security	New		New	
Distributed tasks	New		New	
Inventory management	✓	Improved – snapshots	New	
Fault management / notification	✓		✓	
System software maintenance	✓		✓	Improved – VCRM
Command line	New		New	
Extensibility	New		New	



Migration Options

- For Insight Manager (Win32) customers:
 - Manual migration process
 - “Transitioning from Compaq Insight Manager (Win32) to HP Systems Insight Manager” white paper provided on HP SIM web site
- For Insight Manager 7 customers:
 - Automated migration process with HP Systems Insight Manager 4.1 and the HP Systems Insight Manager Data Migration Tool (DMT)
 - Manual migration process with HP Systems Insight Manager 4.0
 - “Transitioning from Insight Manager 7 to HP Systems Insight Manager 4.1” white paper provided on HP SIM web site

Migration from Insight Manager (Win32)

Introduction

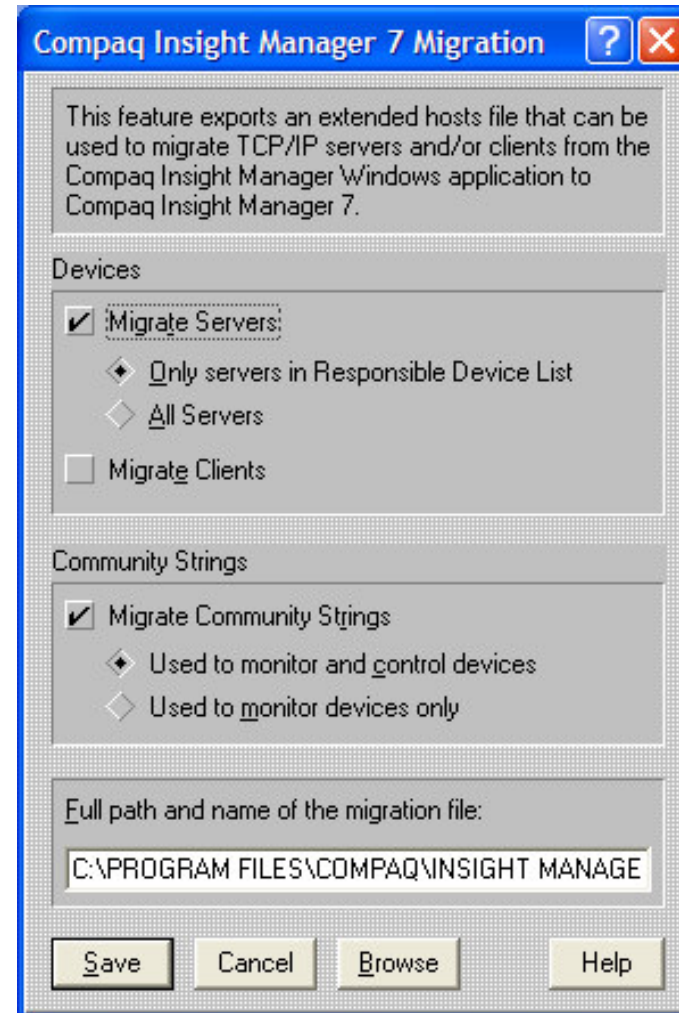


- To integrate HP Systems Insight Manager into an existing Insight Manager, install HP Systems Insight Manager on any server in the network and let it discover the same devices.
- Some important points to remember:
 - HP Systems Insight Manager and Insight Manager (Win32) can be installed on the same server.
 - Older agents are supported by HP Systems Insight Manager.
 - HP Systems Insight Manager has no interaction with the existing Insight Manager.

Migration from Insight Manager (Win32)

The Export Process

- Insight Manager version 4.7 and later includes a file menu option that allows you to export a device list.
- File->Export Compaq Insight Manager 7 Migration file





Migration from Insight Manager (Win32) The Import Process

- Import the file through HP SIM's Manual Discovery – Hosts File section

Manual Discovery - Hosts Files

Description: Add multiple systems to be managed by HP Systems Insight Manager

New Hosts File

Required field *

Hosts file name:*

Initialize contents with:

Empty file

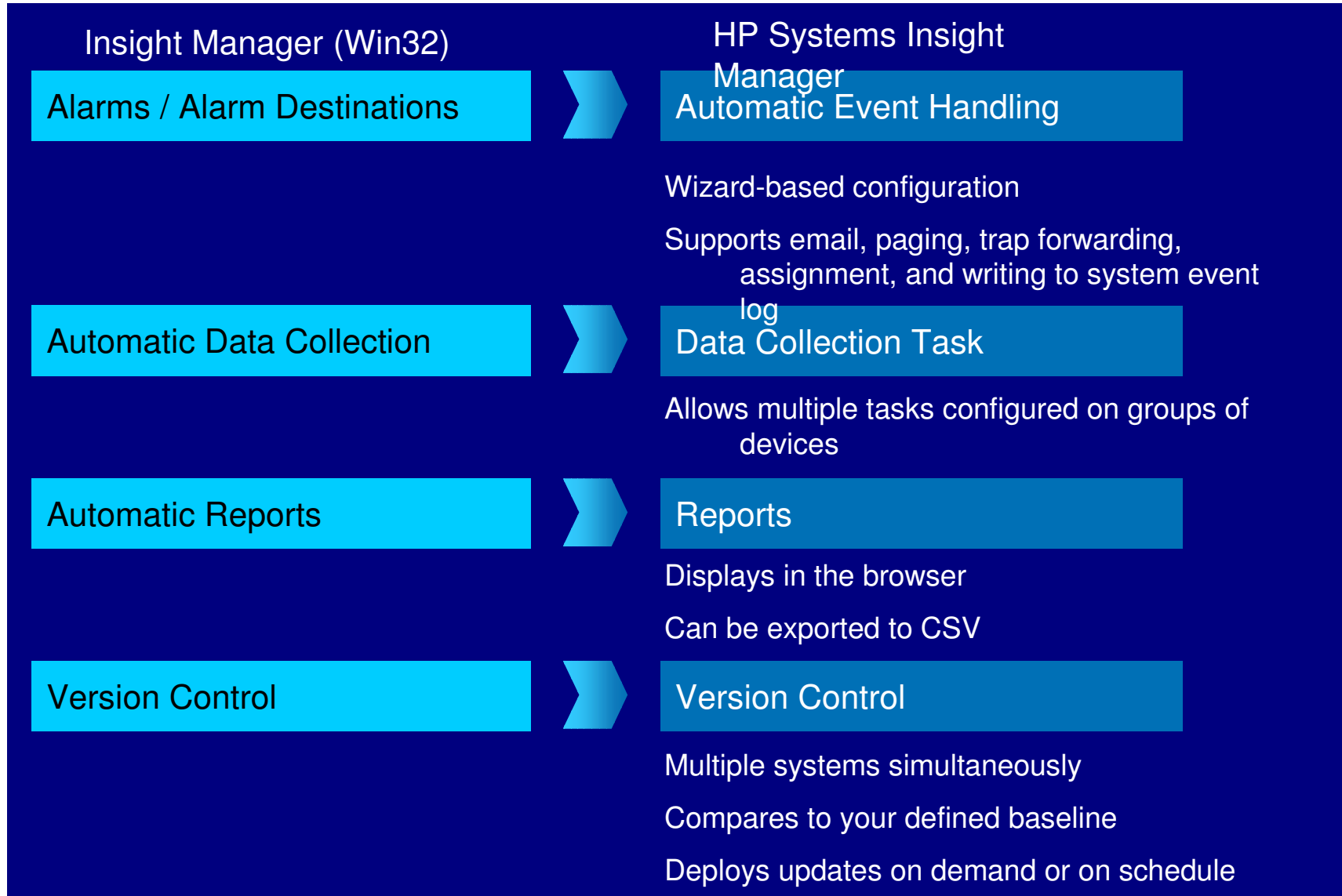
Systems loaded from the central management server, sorted by:

Systems loaded from hosts file

Contents:

```
# File created by Compaq Insight Manager 5.50
#
# This file is an extended hosts file containing devices discovered by
# Compaq Insight Manager. Use this file to migrate your device list from
# the Compaq Insight Manager Windows application to Compaq Insight Manag
#
```


Migration from Insight Manager (Win32) Migration



Migration from Insight Manager 7 DMT Features



- Captures Insight Manager 7 configuration in portable (XML) data format for in-place (System A to System A) or Remote (System A to System B) migration.
- Streamlined migration wizard provided to guide user through install and migration process.
- Transfers user-customized system configuration data.
- Disable Insight Manager 7 capability incorporated into the tool.
- Stand-alone application operating independent of or seamlessly integrated into the HP Systems Insight Manager installation.

Migration from Insight Manager 7 DMT Prerequisites



- The DMT is designed to work with Insight Manager 7 SP2.3 and HP Systems Insight Manager 4.1.
- Prior versions of Insight Manager 7 are handled as follows:
 - Insight Manager 7 SP2.0 → SP2.2 – Provides for in-place upgrade to Insight Manager 7 SP2.3
 - Insight Manager 7 < SP2 – Instructs user to upgrade to Insight Manager 7 SP2.3 via the Insight Manager 7 web site.



Migration from Insight Manager 7

The Fundamentals of Data Migration

- DMT migrates:
 - User accounts
 - Devices and device protocol settings
 - User created queries and folders
 - User created tasks and notifications
 - User created reports
 - Server settings
 - Server certificate (available for in-place migration)
 - Device Type Manager rules
- DMT does not migrate:
 - User enrolled MIBs (must be recompiled)
 - Single instance and historical data collection records
 - Event records (events are archived to CSV format)





Migration from Insight Manager 7

The Fundamentals of Data Migration

- Insight Manager 7 and HP Systems Insight Manager can coexist in the same network environment but cannot coexist on the same server.
- The DMT operates on user added or modified data items and ignores system created items in Insight Manager 7, specifically default tasks and queries.
- The DMT was designed to run with a new HP Systems Insight Manager 4.1 installation. Running DMT against an HP SIM installation that has been active for some time may produce unpredictable results.
- Due to differences between Insight Manager 7 and HP Systems Insight Manager, the HP SIM administrator is required to log in after migration and review changes made. By default, the DMT disables many upgraded configuration items so that you can review and make changes.



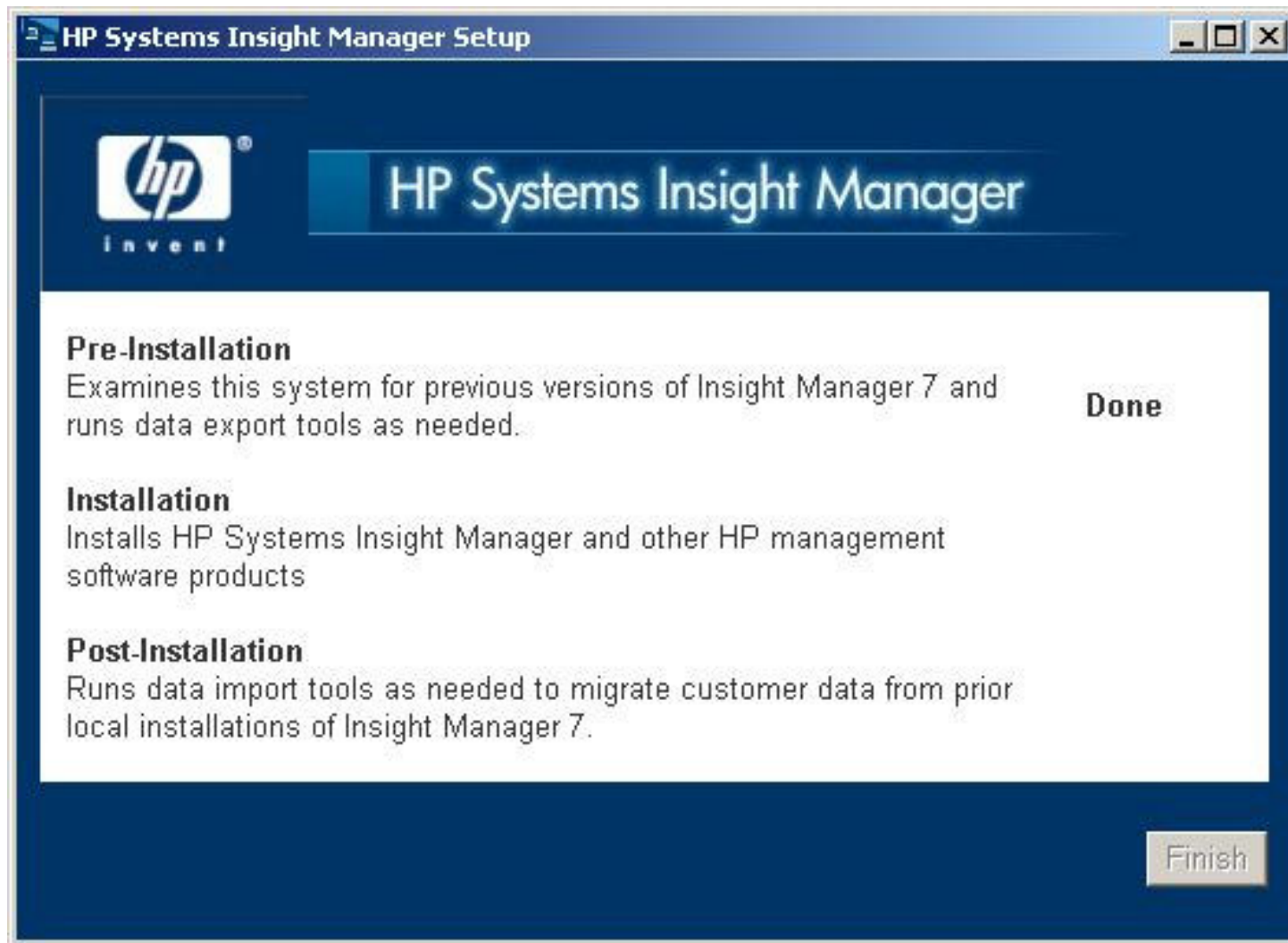
Migration from Insight Manager 7

The Data Migration Process

- Pre-installation: Export user-defined data from Insight Manager 7 using the HP Systems Insight Manager Data Migration Tool (DMT). If needed, export HP Performance Management Pack (PMP) data.
- Installation: Install HP Systems Insight Manager 4.1 and associated products
- Post-installation: Import user-defined data to HP Systems Insight Manager using the DMT. If needed, import PMP data.

Migration from Insight Manager 7

The Data Migration Process

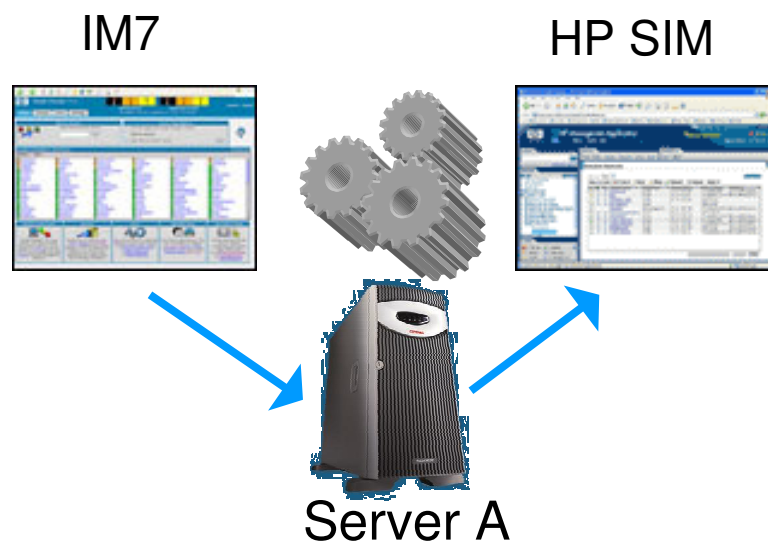


Migration from Insight Manager 7

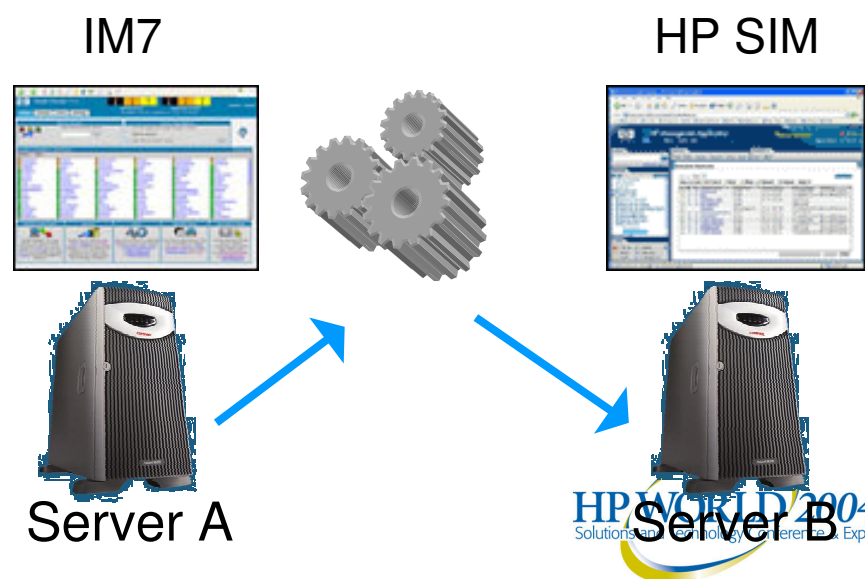
In-place versus Remote

- Insight Manager 7 is disabled during in-place migration and may be manually re-enabled if necessary.
- For in-place migration, pre-installation, installation and post-installation steps are run in sequence.
- For remote migration, all steps must be run manually.

In-place migration



Remote server migration





Migration from Insight Manager 7

Important Notes on Remote migration

- The Insight Manager 7 server certificate is not preserved. If you have trust relationships established between Insight Manager 7 and HP managed devices, these trust relationships will be broken.
- Local Windows accounts used by Insight Manager 7 on System A will not be accessible from System B.



Migration from Insight Manager 7

Performing an In-Place migration

1. Run setup.exe on server running Insight Manager 7 SP2.3.
2. PMP DMT exports data and removes PMP 2.x.
3. HP Systems Insight Manager DMT exports data and disables Insight Manager 7.
4. HP Systems Insight Manager 4.1 installation.
5. HP Systems Insight Manager DMT imports data.
6. PMP migration tool imports data.

Migration from Insight Manager 7

Choosing your migration path



Disable Insight Manager 7?

The *HP Systems Insight Manager Data Migration Tool* offers support for both in-place and remote data migration. Insight Manager 7 must be disabled or uninstalled before installing *HP Systems Insight Manager*. Both applications cannot run simultaneously on the same system. They may run in parallel on separate systems in the same environment.

In-place migration allows you to install *HP Systems Insight Manager* on the same server that previously ran Insight Manager 7. As part of the in-place migration process, Insight Manager 7 will be disabled and can only be re-enabled by uninstalling *HP Systems Insight Manager* and manually re-enabling Insight Manager 7. In-place migration preserves all user-defined data including the Insight Manager 7 server certificate.

Remote migration allows you to install *HP Systems Insight Manager* on a different server than Insight Manager 7. The remote migration process leaves Insight Manager 7 running after data has been exported and requires you to copy the migration data file to your new *HP Systems Insight Manager* server. Remote migration preserves all user-defined data except the Insight Manager 7 server certificate. Remote migration of the server certificate is a manual process.

In-place migration (disable Insight Manager 7)
 Remote migration (do not disable Insight Manager 7)

Next >



Migration from Insight Manager 7

Performing a Remote migration

1. Run setup.exe on server running Insight Manager 7 SP2.3.
2. PMP DMT exports data and removes PMP 2.x.
3. HP Systems Insight Manager DMT exports data.
4. Run setup.exe on a separate server to install HP Systems Insight Manager 4.1.
5. Copy the user-defined-data file (user-data.dmt) from the system running Insight Manager 7 to the system running HP Systems Insight Manager 4.1.
6. Copy the PMP DMT jar files (pmp.jar) from the system running PMP 2.1 to the system running HP PMP 3.0
7. Run dmtshell.exe to launch DMT on the HP Systems Insight Manager system and import data.
8. Run pmpshell.exe to launch PMP DMT on the HP Systems Insight Manager system and import data.



Migration from Insight Manager 7 After Migration



- Log in to HP Systems Insight Manager and...
 - Verify all migrated user accounts
 - Assign authorizations for each user
 - Check migrated device count
 - Enable all migrated tasks and automated event handling rules
 - Recompile any migrated MIBs.
- You are ready to go!



i n v e n t