



OpenVMS Delivers the Adaptive Enterprise Today

Session 3846



Gaitan D'Antoni
OpenVMS Technical Architect
Hewlett-Packard
gaitan.dantoni@hp.com
Dave Holt

© 2004 Hewlett-Packard Development Company, L.P.
The information contained herein is subject to change without notice

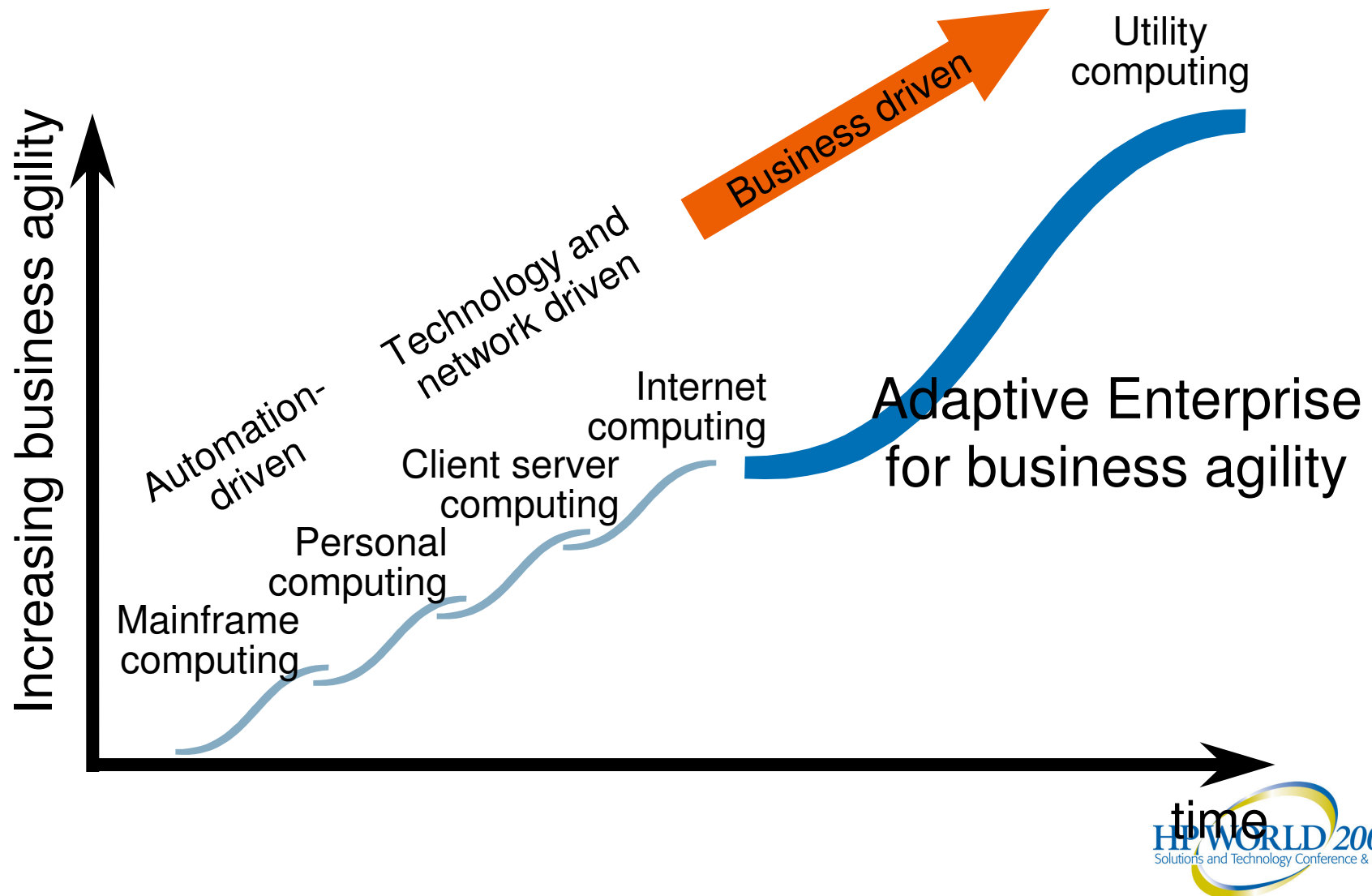


Agenda

- Business challenges and the Adaptive Enterprise
- HP business critical systems' offerings for the Adaptive Enterprise
 - Continuous, secure operations
 - Automated, Adaptive Management
 - Dynamic resource allocation
 - Foundation for the future
- How OpenVMS is delivering on the Adaptive Enterprise vision TODAY

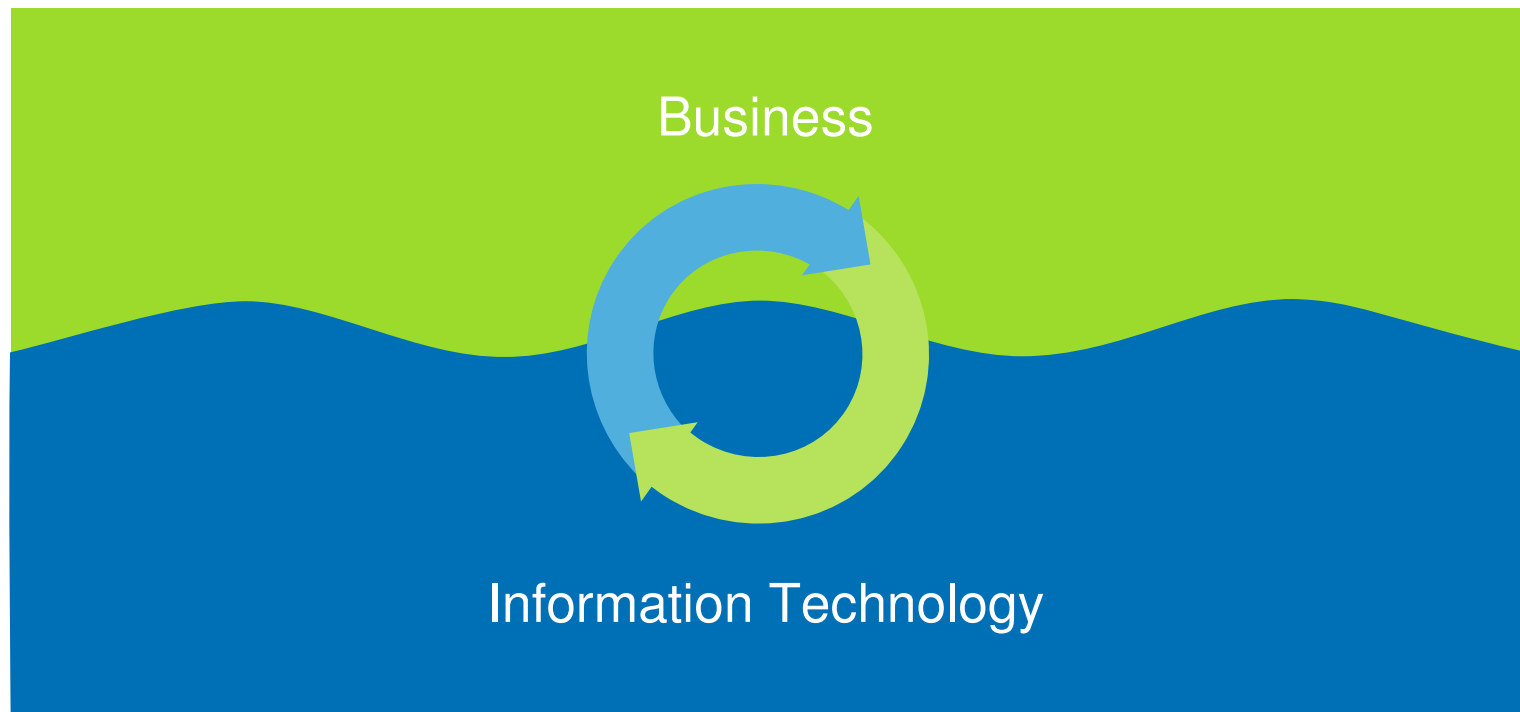


The industry is moving to a new model of computing



The Adaptive Enterprise

Business and IT synchronized to capitalize on change



Business benefits: simplicity, agility, value

Today's business challenges require IT to adapt



Increased volume of change

Ability to adapt quickly

Business challenges

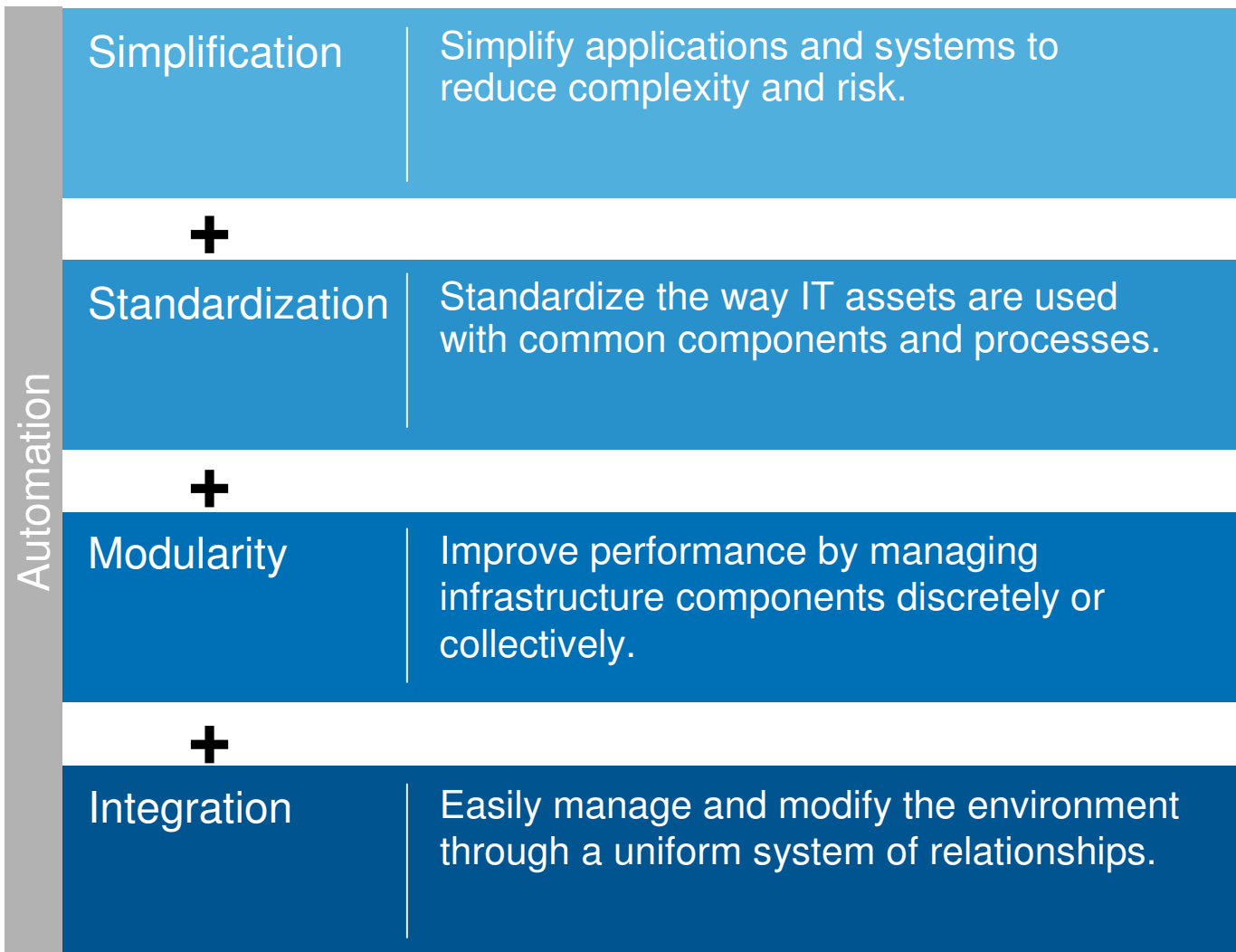
- Improve business performance, quality and ROI, while reducing costs
- Minimize risk associated with change
- Drive new business models and direction
- Shorten time-to-market
- Enable mergers, acquisitions and divestitures



IT imperatives

- Link business and IT
- Reduce costs, ensure stability and flexibility
- Reduce complexity
- Optimize assets today and tomorrow
- Extend value and reach of the enterprise

Principles for managing an Adaptive Enterprise



Applied consistently across:

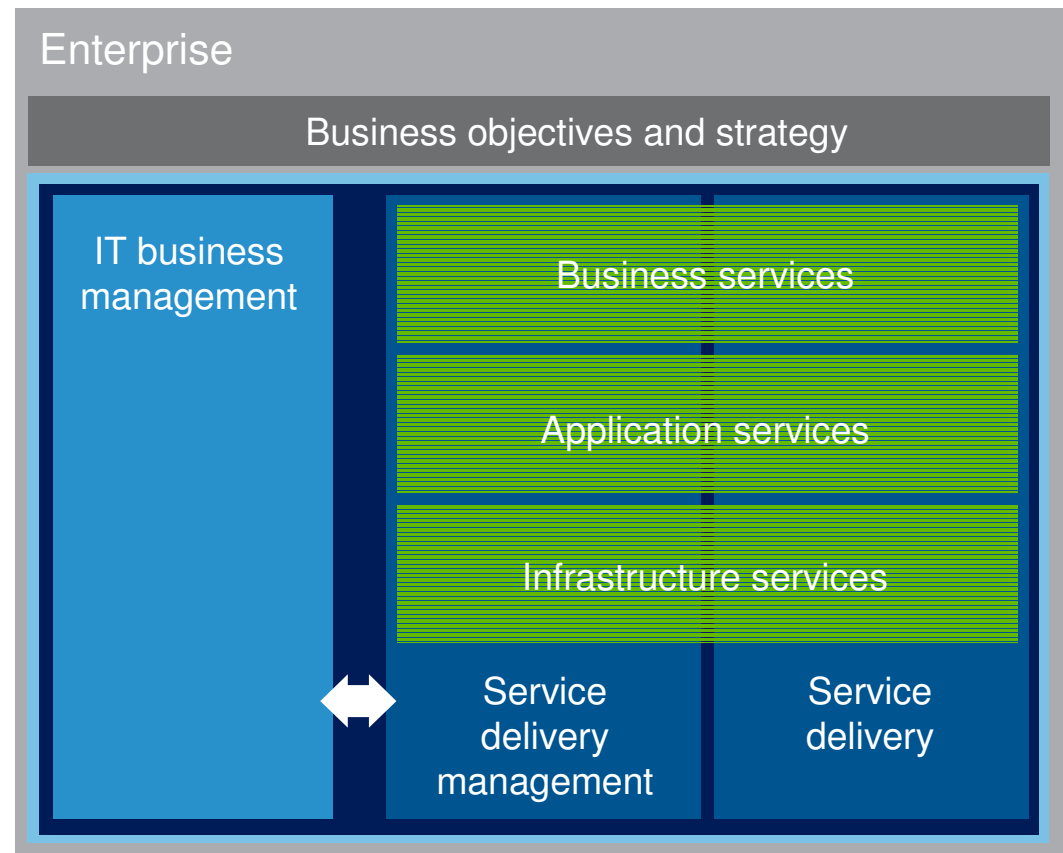
- Business processes
- Applications
- Infrastructure



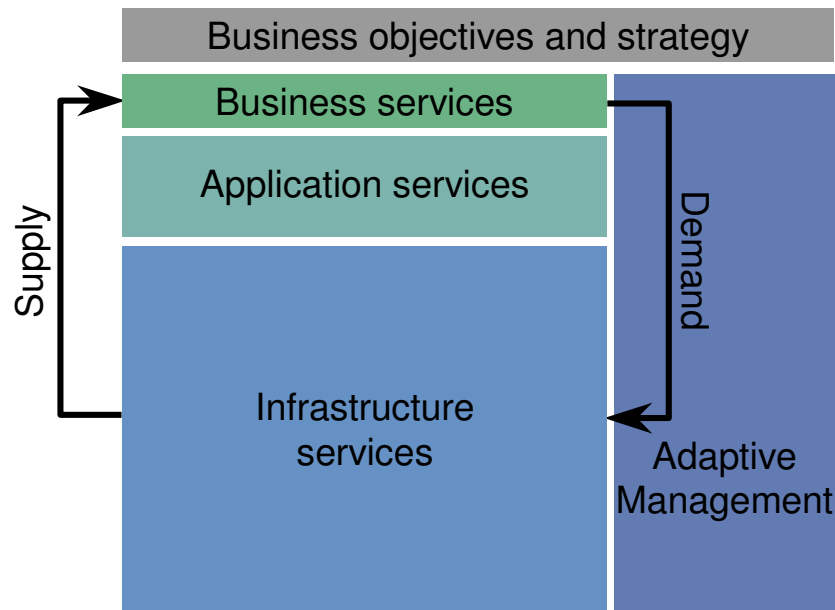
Darwin Architecture for the Adaptive Enterprise



- Apply key design principles consistently across business, application, infrastructure
 - Simplification
 - Standardization
 - Modularity
 - Integration
- Holistic approach: Integrate people, process and technology



Adaptive Enterprise and Management Technology attributes



- Automated intelligent management
- Dynamic resource optimization
- Continuous secure operations

Virtualization – driving complexity out



Today's data center



Ideal computing



Virtualization – driving IT economics



Address four key points

- Lower costs
- Improve service levels
- Manage risk
- Enhance agility

Ideal
computing



HP offerings for an Adaptive Enterprise



Areas of focus

BCS and partners

Continuous & secure operations	<ul style="list-style-type: none">• Servers• Operating systems• High availability
Automated & intelligent management	<ul style="list-style-type: none">• Clustering• Manageability
Dynamic resource optimization	<ul style="list-style-type: none">• On Demand portfolio• Virtual Server Environment (VSE)• Utility Data Center (UDC)
Foundation for the future	<ul style="list-style-type: none">• Itanium architecture• Business systems evolution

Secure Operations

Crucial, as more and more applications and data are exposed to the Web



OpenVMS - designed from the ground up to overcome security vulnerabilities of contemporary operating systems

Just some of the features designed-in from day one:

- Four level ring protection system
- Strictly separated User and System stacks
- TCP/IP vulnerabilities cannot lead to hacker access to the OpenVMS Kernel
- Design privilege assignments are attached to a mode
 - A malicious program activated in higher mode cannot break out to a user mode as all higher privileges are lost – prevents program privilege tailgating





Then

- Security built in to the O/S: no add-on security
- First commercial “C2” O/S VAX/VMS V4 (1988)
- Certificate “C2” & “B1” in 1993
- Security encompasses the entire cluster and certified! (1998 RAMP)

OpenVMS “Security by design”

Now

- Supporting new Industry Standards
 - OpenSSL
 - Kerberos
 - CDSA
- Ready for new evaluations and standards
 - DII COE
- 20 year commitment
 - IPSEC
 - HIPAA



Future

- Enterprise wide security external authentication for:
 - LDAP
 - Kerberos
 - User defined
- eBusiness security

DEFCON 9 Winner
July 2001, Las Vegas
“Cool and Unhackable”
 (>4300 hackers over a weekend)

OpenVMS and CERT Advisories

- OpenVMS/VMS 52 over **15** years
- AIX 377 since '94
- Solaris 490 over last 5 years
- Linux 417 over last 2 years
- Windows 2000 484 over last 11 months

OpenVMS has achieved US DoD “C2” security ratings. To demonstrate compliance to C2 a security test suite was developed with tests created to assure any security relevant function behaves as documented

Each release must successfully complete the security test suite before it is released

HP offerings for an Adaptive Enterprise



Areas of focus

BCS and partners

Continuous & secure operations	<ul style="list-style-type: none">• Servers• Operating systems• High availability
Automated & intelligent management	<ul style="list-style-type: none">• Clustering• Manageability
Dynamic resource optimization	<ul style="list-style-type: none">• On Demand portfolio• Virtual Server Environment (VSE)• Utility Data Center (UDC)
Foundation for the future	<ul style="list-style-type: none">• Itanium architecture• Business systems evolution

HP clustering products – Choice and flexibility



No matter what your business need, HP has you covered

Serviceguard (HP-UX and Linux)

#1 UNIX disaster tolerant cluster and high availability fail-over market leader

TruCluster Server

#1 TCO cluster management and easy scale out capability

NonStop ServerNet Cluster

#1 fault tolerant - continuous operation

OpenVMS Clusters

#1 in cluster experience - since 1983

The “**gold standard**” in clustering

“#1 clustering solutions partner... meeting the most demanding needs.”

DH Brown clustering study



OpenVMS Clustering and Disaster Tolerance



- Analysts *Illuminata* regard OpenVMS as the “**gold standard**” for Clustering and Disaster Tolerance.
- An excellent paper published in August 2002 comparing it to all popular Unix operating systems is available here:

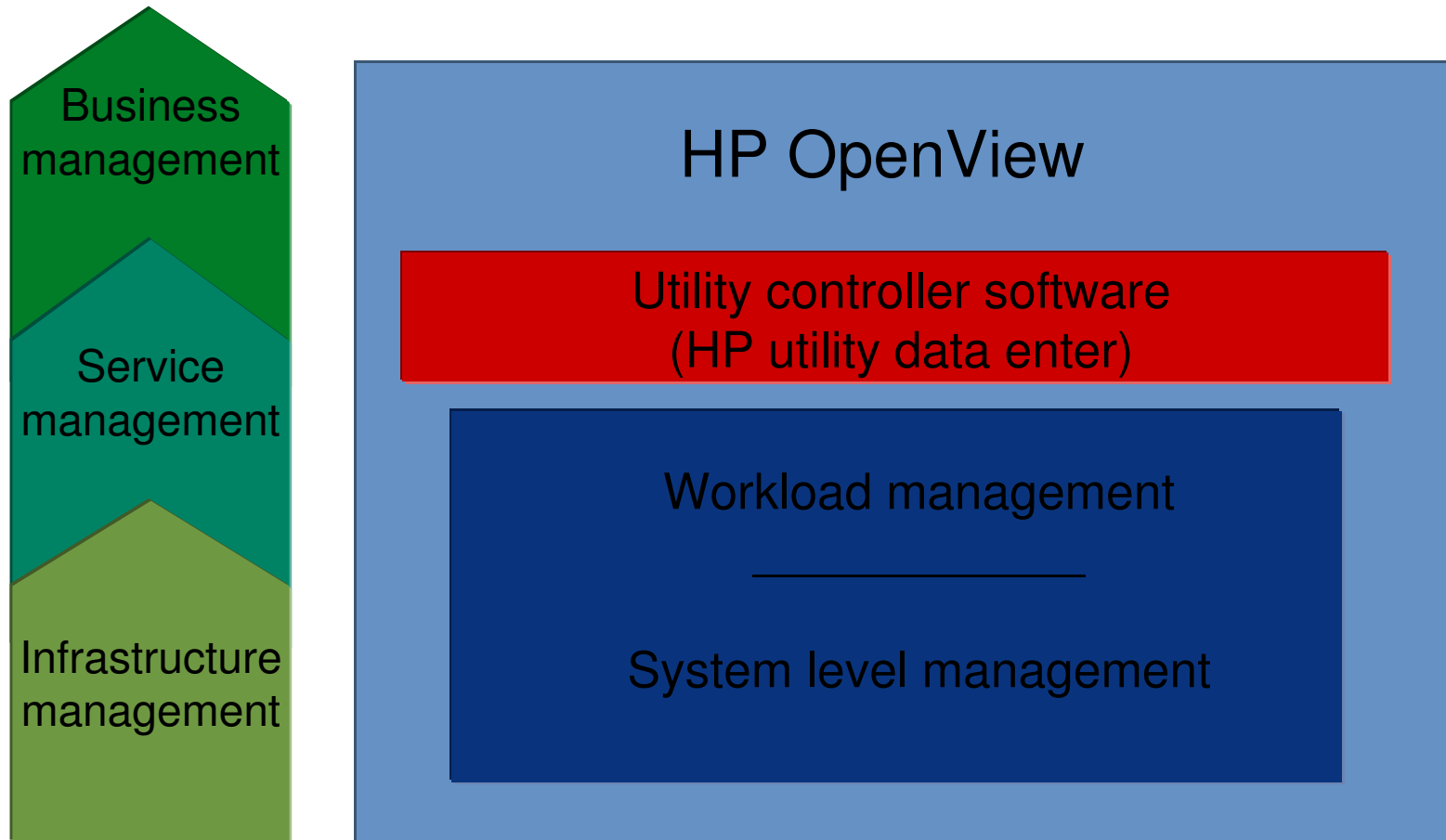
<http://h71000.www7.hp.com/openvms/whitepapers/Illuminata.pdf>



Adaptive Management



HP Adaptive Management offerings





OpenVMS Adaptive Management

- OpenView Operations Agent for OpenVMS version 1.0
 - Real-time OpenVMS AlphaServer system monitoring and event management utilizing native agents and Smart Plug-Ins (SPIs)
 - Monitors the performance, detects bottlenecks and reports on the availability of the OpenVMS systems and can send alarms and notifications

Shipping NOW

HP Adaptive Management enhancements



- Many of the recent HP Adaptive Management software acquisitions including:
 - Select Access from Baltimore
 - Talking Blocks
 - Extreme Logic
 - Persist Technology
 - Novadigm
 - Consera
 - Trulogica

will embrace OpenVMS over time



Current OpenVMS System Management Partners



- Appmind Software AB
- BMC
- Computer Associates
- COMTEK
- Executive Software
- Heroix/Ittheon
- ISE/XUIS
- LEGATO
- MVP System Inc.
- PointSecure
- Raxco
- TECsys Development

HP offerings for an Adaptive Enterprise



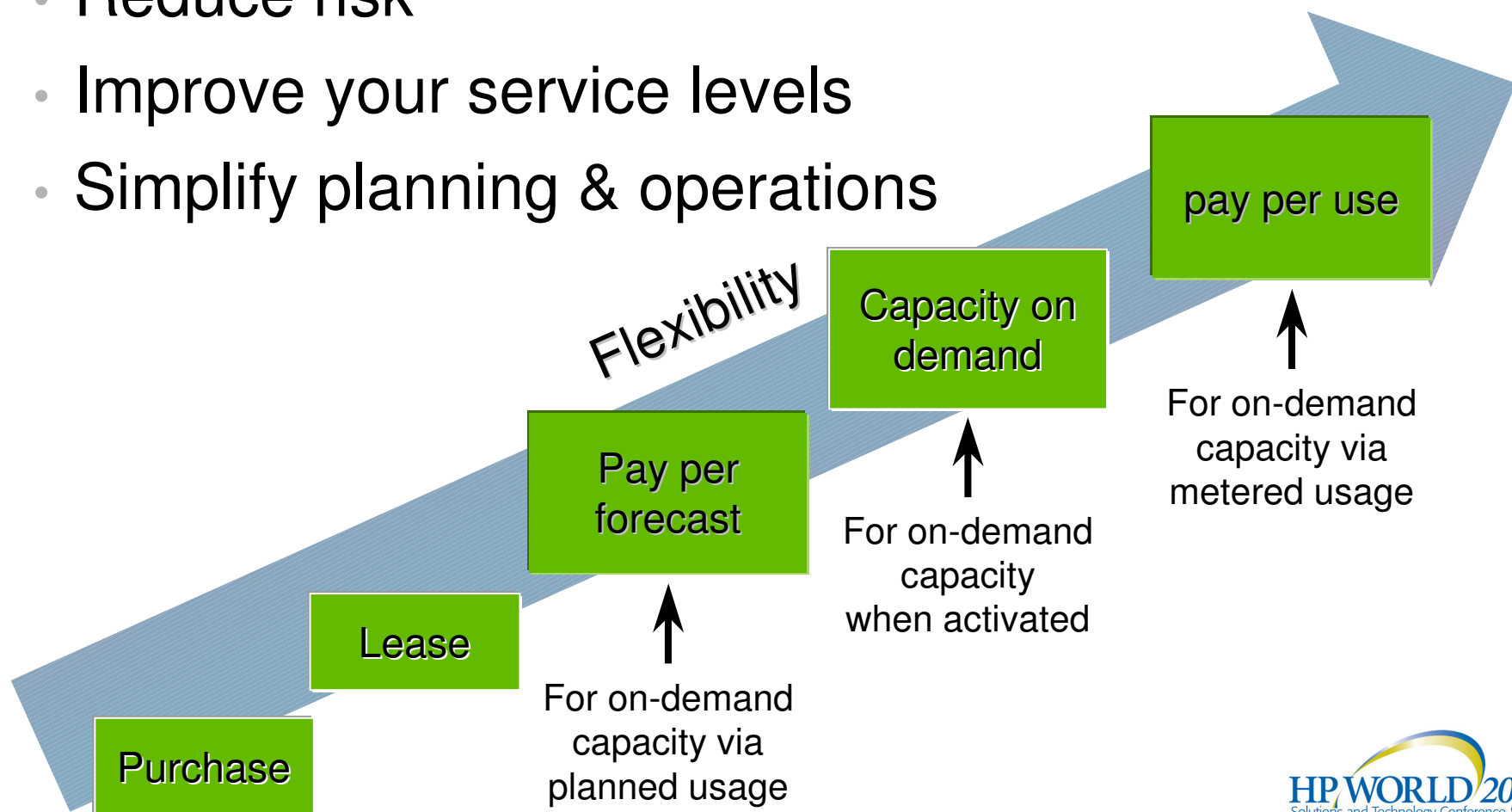
Areas of focus

BCS and partners

Continuous & secure operations	<ul style="list-style-type: none">• Servers• Operating systems• High availability
Automated & intelligent management	<ul style="list-style-type: none">• Clustering• Manageability
Dynamic resource optimization	<ul style="list-style-type: none">• On Demand portfolio• Virtual Server Environment (VSE)• Utility Data Center (UDC)
Foundation for the future	<ul style="list-style-type: none">• Itanium architecture• Business systems evolution

On Demand solutions portfolio

- Align your costs to revenues
- Reduce risk
- Improve your service levels
- Simplify planning & operations

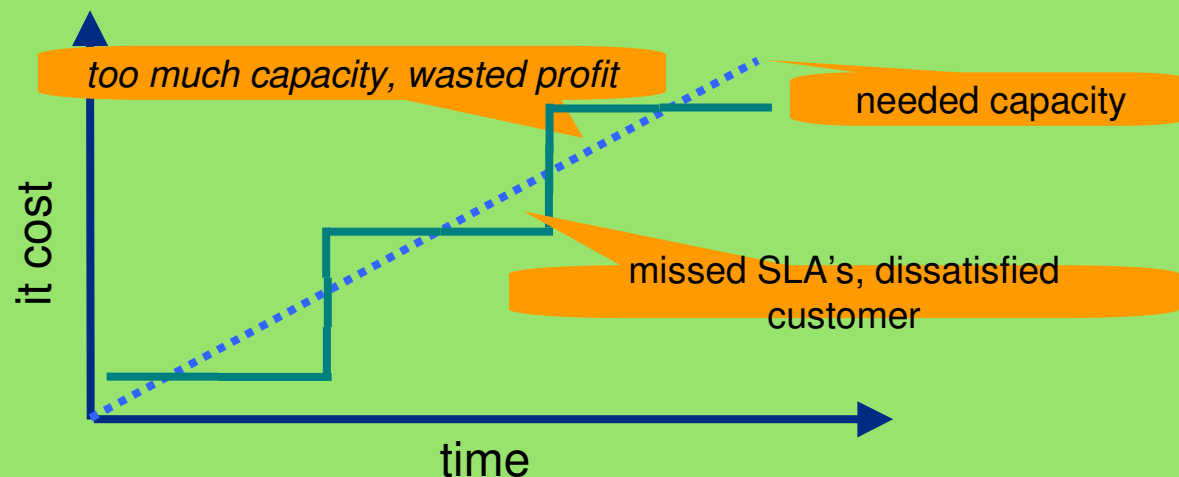


our customers' problem

the traditional business
model is challenged in
the internet age

customer issues

- significant upfront investments
- costs not in line with revenues
- correct capacity is a moving target
- supply struggles with demand
- competitive advantage challenging



traditional capacity planning meant sizing
for an unknown but anticipated peak



OpenVMS Utility Pricing Status

- Pay Per Forecast NOW
- Capacity on Demand NOW
- Per Processor Licensing OpenVMS 8.2
end 04
- Metered Usage/Pay Per Use 2005
 - Detailed engineering studies have begun
 - Integration into HP Billing Systems underway
 - Goal is to ship on OpenVMS 8.3 Itanium in 2005



HP OpenVMS I64 Operating Environments Revision 2.8



OpenVMS I64 Mission Critical Operating Environment (MCOE)

OpenVMS I64 Enterprise Operating Environment (EOE)

OpenVMS I64 Foundation Operating Environment (FOE)

- OpenVMS Operating System
- OpenVMS Unlimited User Licensing
- TCP/IP Services for OpenVMS
- DECnet-Plus for OpenVMS End System
- DECwindows Motif for OpenVMS
- DECnet IV
- Performance Data Collector
- Integration Technologies
 - BridgeWorks
 - COM for OpenVMS
 - Secure Web Server (SWS)
 - Secure Web Browser (SWB)
 - SDK for the Java™ Platform
 - XML Technology
 - NetBeans
 - Simple Object Access Protocol (SOAP) Toolkit
 - Kerberos
 - Enterprise Directory
 - CDSA
 - SSL
 - OpenSource Tools

Add to Foundation:

- RMSjournaling
- VolumeShadowing
- DECram
- OpenVMS System Management Tools
 - OVMS Management Station
 - Enterprise Capacity Planner - ECP
 - Availability Manager
 - OpenVMS Web Agents
 - OpenVMS WEBM/CIM

Add to Enterprise:

- OpenVMS Clusters
- OpenVMS RTR Backend



One DVD media for all 3 OE's

Easier to order

Easier license management

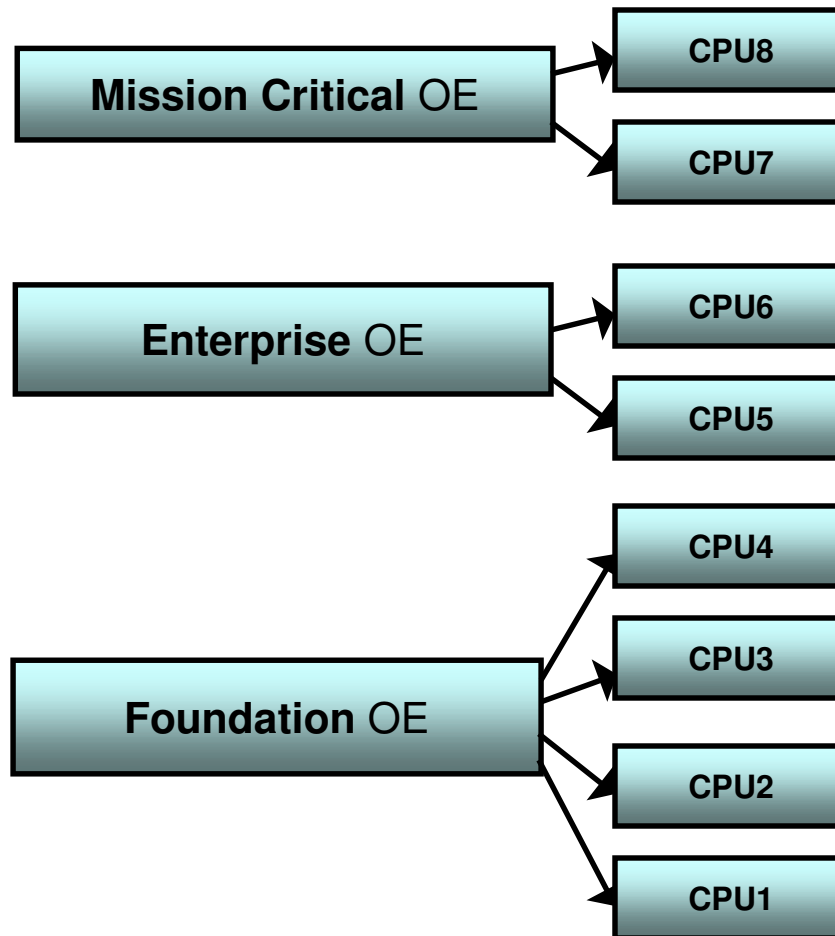
Straight forward installation of OE's from a single DVD

Simpler support contracts

➔ higher customer satisfaction

Per Processor Licensing

with multiple OpenVMS Operating Environments (OE)



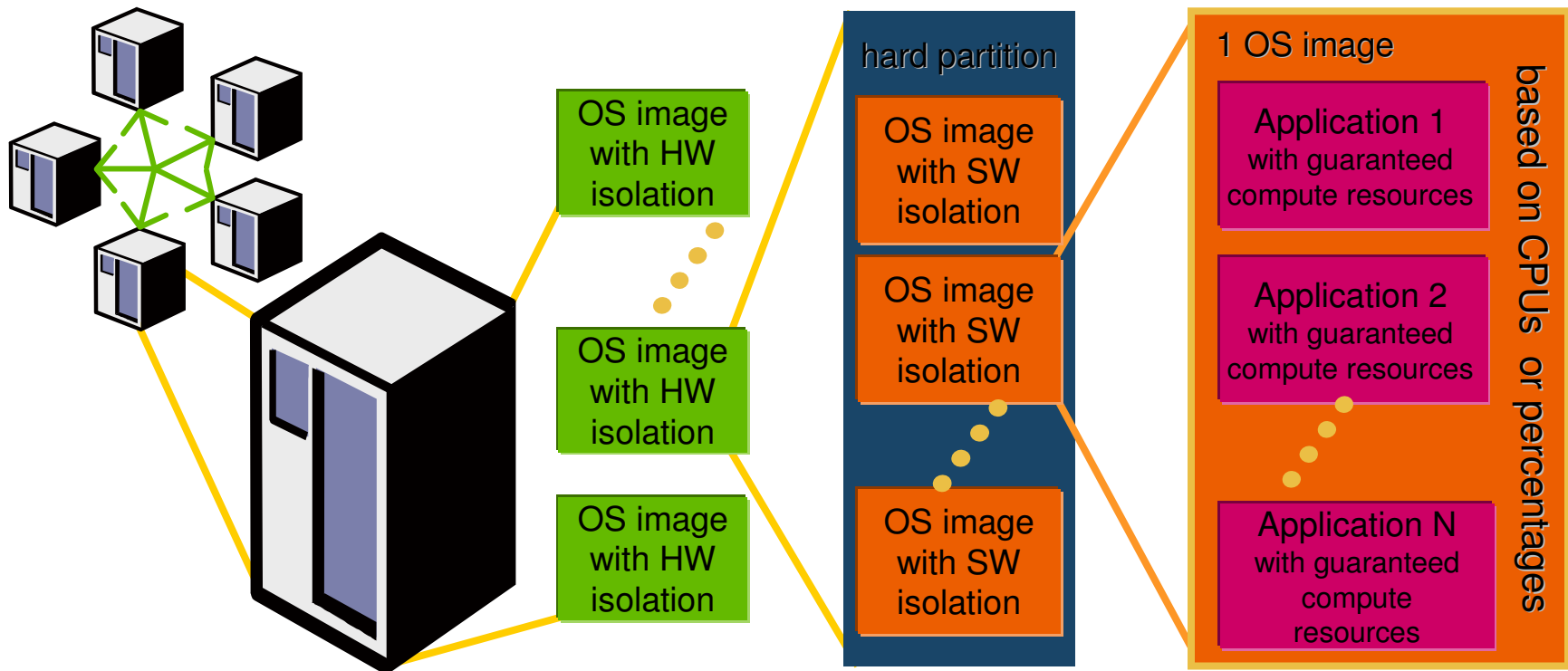
HP partitioning continuum strategy

multiple clustered nodes

hard partitions

virtual partitions

resource partitions



Workload Management

isolation
highest degree of separation

flexibility
highest degree of dynamic capabilities

Why Virtualization?

- Enables server consolidation today
 - Reduce HW & management costs
- Improve datacenter efficiency in the future
 - Increase server resource utilization
 - Improve responsiveness to changing workloads
 - Simplify operations lifecycle - development, testing deployment, legacy stages

Workload Manager

- Workload Manager (WLM) ties together:
 - Partitioning
 - Resource Management
 - On-demand Resources
 - Clustering
- Linking them back to business goals and Service-Level Objectives – SLOs
- WLM communicates with the OS-specific subsystems to control actual usage of CPUs, Memory and Disk

Workload Manager on OpenVMS?

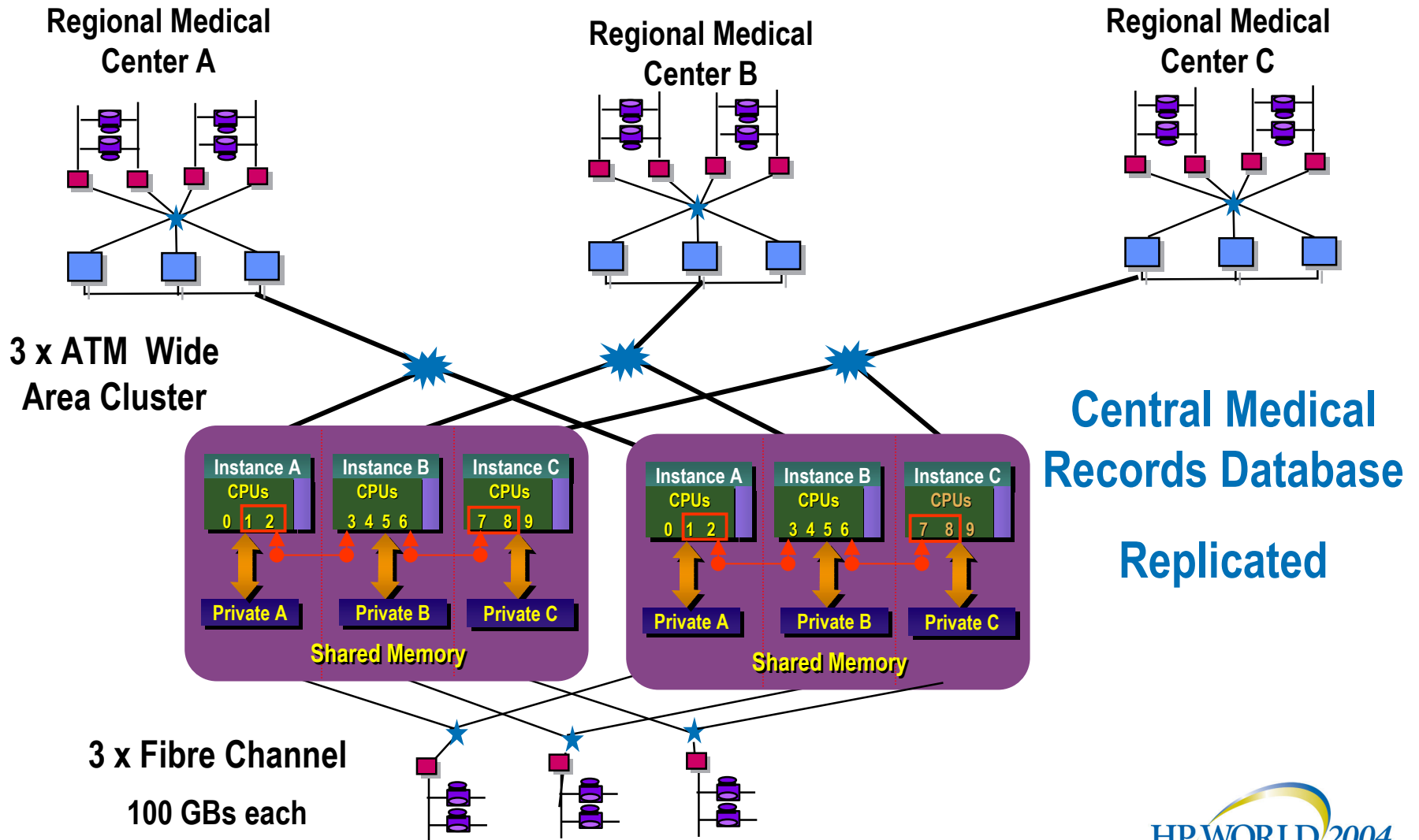
- Code is being ported now with increasing number of functions running
- Plan to ship on OpenVMS 8.3 Alpha and Itanium by end-2005
- Process Resource Manager (PRM) has a direct equivalent on OpenVMS as *Class Scheduler*

Soft Partitions on OpenVMS? OpenVMS Galaxy



- High-speed communication between instances using Read/Write Shared Memory
 - cluster
 - LAN
 - database
- O/S uses direct interrupts
- O/S reads private memory
- CPU reassignment
- Server consolidation
- Optimize different work loads

VMSClusters and Galaxy for disaster tolerance



HP offerings for an Adaptive Enterprise



Areas of focus

BCS and partners

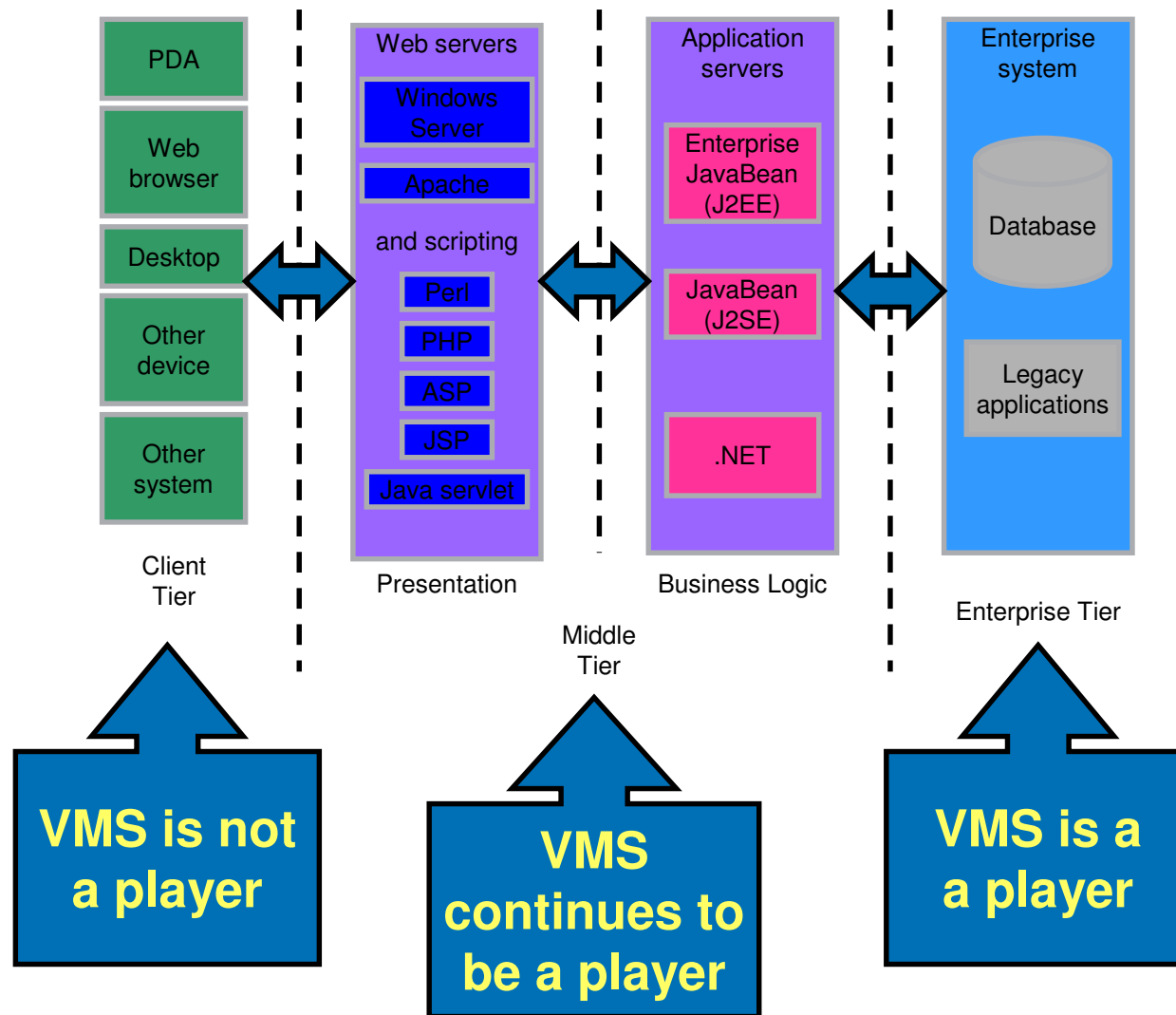
Continuous & secure operations	<ul style="list-style-type: none">• Servers• Operating systems• High availability
Automated & intelligent management	<ul style="list-style-type: none">• Clustering• Manageability
Dynamic resource optimization	<ul style="list-style-type: none">• On Demand portfolio• Virtual Server Environment (VSE)• Utility Data Center (UDC)
Foundation for the future	<ul style="list-style-type: none">• Itanium architecture• Business systems evolution

Business Systems Evolution



- Embracing Legacy Applications and Data
- Extending the ROI of existing applications
- Increasing revenue and reducing costs
- Reducing both development costs and response time
 - by developing new solutions with Web Services
- Ensuring applications running on OpenVMS can be accessed from non-OpenVMS clients and platforms

Where OpenVMS Plays



OpenVMS Web Services Products



HP Products:

- Compaq Secure Web Server
- Tomcat & Ant build environment
- Java 2 SDK and Fast VM
- SOAP and AXIS
- Xerces and Xalan
- Attunity Connect On Platform
- BridgeWorks
- Enterprise Directory Services
- NetBeans
- DECdtm V2.0 - XA Industry Standard Interface
- Reliable Transaction Router

Partner products:

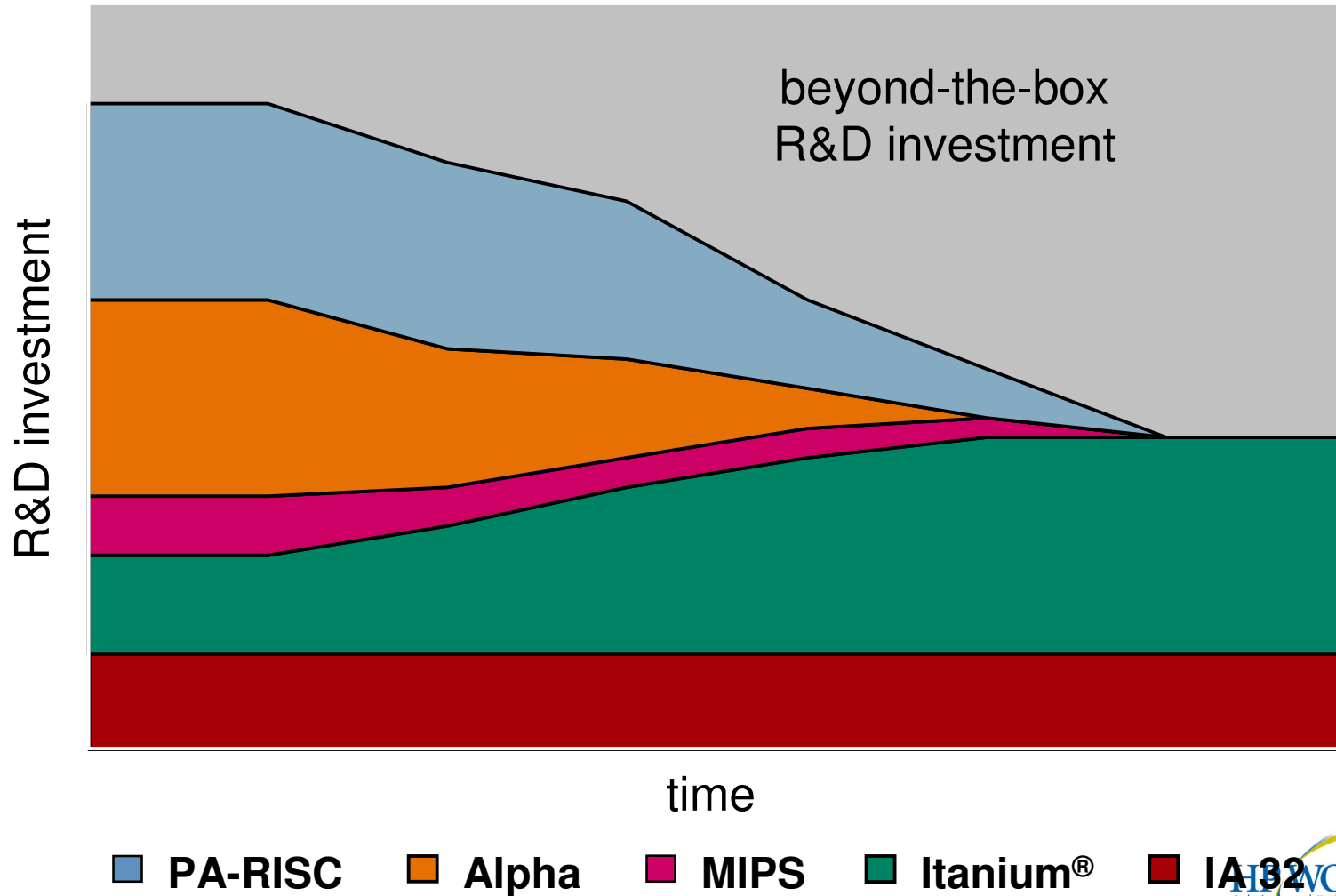
- BEA WebLogic Server
- Compuware Optimal J and Optimal View
- Ericom Suite
- IBM MQ Series/JBMQ
- InterSystems Ensemble
- IONA Orbix 2000 and iPas
- Xology Concerto

Industry Standard Hardware

Reducing costs and
guaranteeing longevity

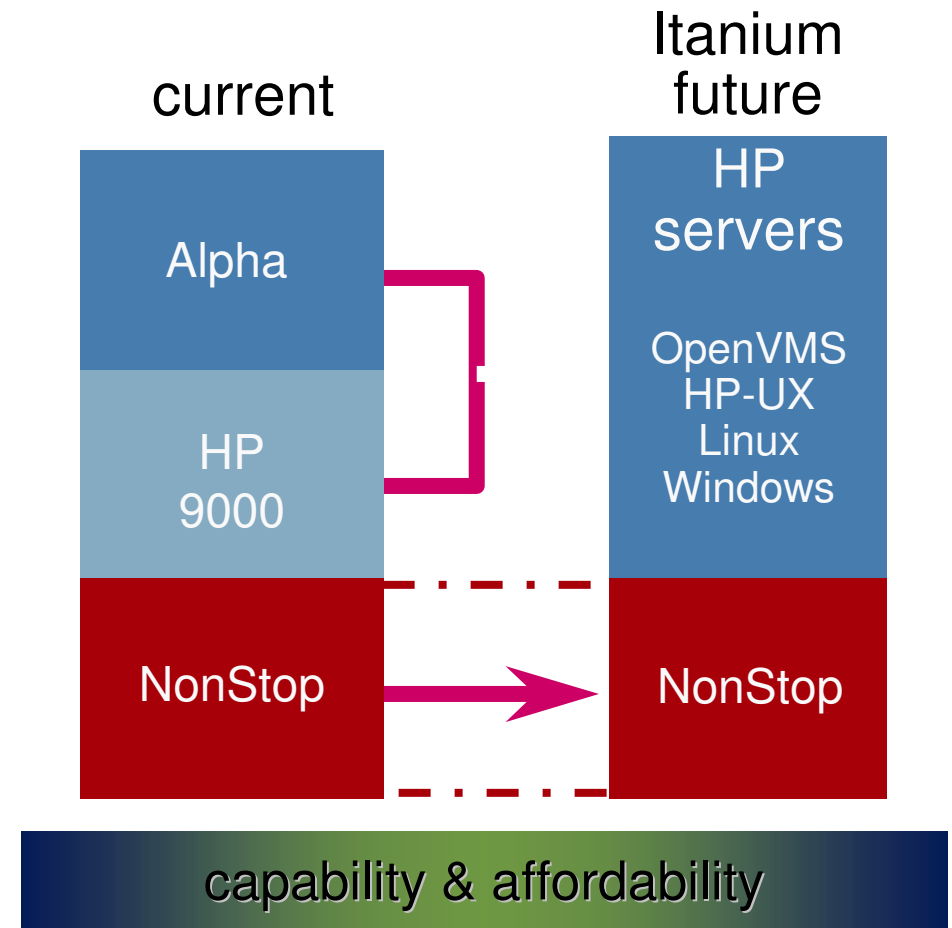
Investing beyond the box

Focused Innovation



HP Enterprise Integrity Server Line

- Choice & flexibility
 - One microprocessor, multiple operating environments
 - Industry standards driven
- Higher performance, lower costs
 - Economies of scale
 - Leveraged costs
 - Next-generation technology



OpenVMS Implementation of Adaptive Enterprise Components and Timeline



Adaptive Enterprise Components		2003	1H04	2H04	1H05	2H05	1H06	2H06
			OpenVMS 8.2 ship		OpenVMS 8.3 ship			
Web Services	XML, SOAP, WSDL, J2EE etc.							
Management	OpenView and SPIs							
	Workload Manager (WLM)		< Port underway					
	Process Resource Mgr (PRM)	OpenVMS Class Scheduler						
Utility Pricing	Pay Per Forecast							
	Capacity On Demand							
	Pay Per Metered Usage		< Detailed engineering studies begun					
	Per Processor Licensing							
Virtualization Technology	Soft Partitions (Galaxy)							
	Hard Partitions							
Continuous Secure Operations	High Availability							
	N-site Disaster Tolerance & Recovery							
	Clusters							
	Network-wide Authentication	EAK available						
	C2							
	Cluster-wide domains							
Platform	Itanium							
	Alpha							



Indicates the phasing in of this component

OpenVMS



HP WORLD 2004

Solutions and Technology Conference & Expo

Co-produced by:



RECOMMENDED TRAINING VENUE FOR THE
HP Certified Professional

