



Print

Here, There & Everywhere
Cross-platform Print Distribution

**David J. Warda
President & CEO
Nobix, Inc.**

**6800 Koll Center Parkway, Suite 110
Pleasanton, CA 94566**

v.925.227.5600 davidw@nobix.com f.925.225.1420





Why are you here?

- Don't have a print strategy?
- Can you improve your print strategy?
- Problems distributing print output to users?
- Want to reduce current resource load?
- Want an easily administered & maintained process?
- Want a simple, pain-free & low cost solution?

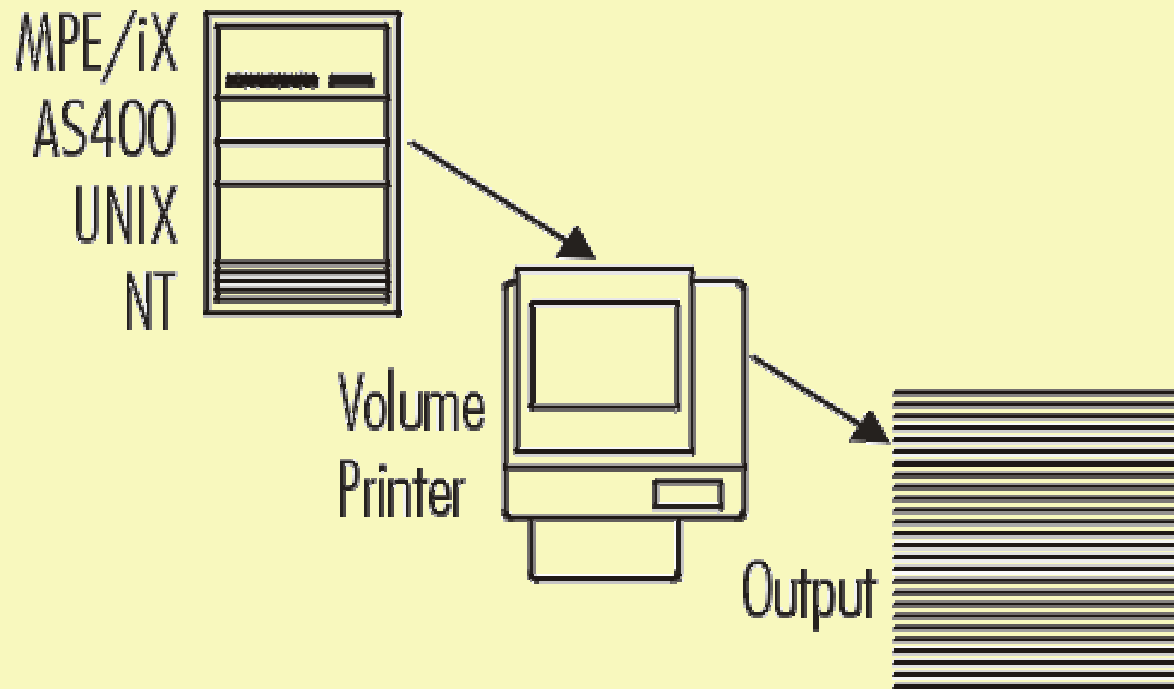


Print Output Evolution

- Individual printers
- Centralized
- Decentralized



Centralized model



User waits for print output



Centralized model - pros

- Simple administration
- Central location for easy access by administrator
- Easy for administrator to control the printer
- Does not require a network
- Volume is relative to number of printers
- Security is manual
- Simple troubleshooting
- Simple training
- IT is responsible



Centralized model - cons

- Labor intensive
- Only IT personnel can access
- Output is distributed manually
- Not fault tolerant
- Difficult to scale
- Limited by printer throughput
- Difficult to redirect output
- Difficult to archive on other systems
- IT is solely responsible

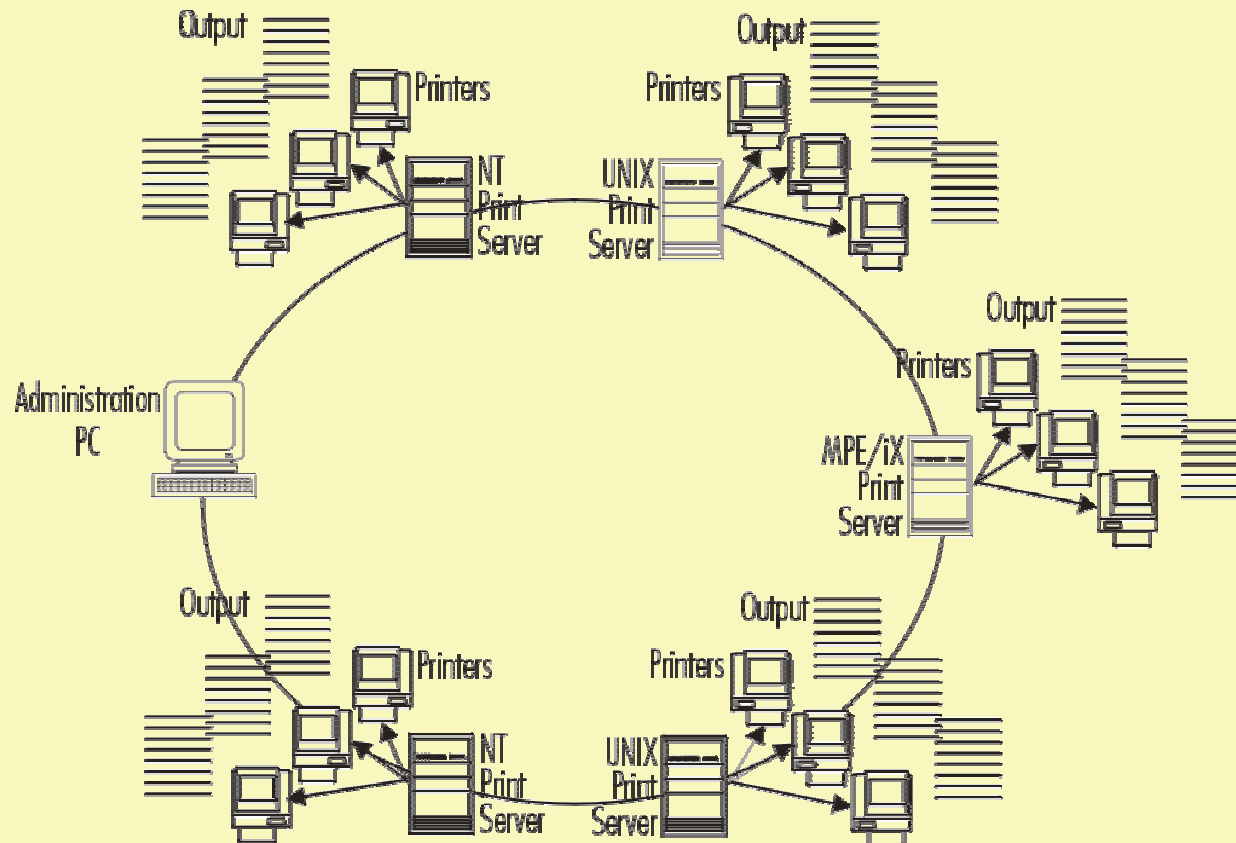


What if there is a way to...

- Eliminate the cons
- Redistribute current resource load
- Lower IT distribution costs
- Increase IT staff and end user productivity
- Gain additional benefits



Decentralized model



No waiting for print output



Decentralized model-pros

- Less IT labor required
- Simply administered from central locations
- Output is distributed automatically
- Fault tolerant & redundant
- Easy to scale
- Easy to redirect output for balanced resource load
- Easy to archive on other systems
- Security is automated
- Users share responsibility



Decentralized model - cons

- Requires a network
- Requires training
- Troubleshooting is more complex
- Users share responsibility
- Specialized software



Decentralized model components

- Network
- Print servers or devices available on network
- Printers
- Print distribution software



Print server platform concerns

- Cost
- Volume
- Reliability
- Redundancy
- Security
- Administration
- Maintenance
- Scalability



NT printserver

- Pros
 - Less expensive
 - Popular technology
- Cons
 - OS reliability issues
 - Limited scalability
 - Training



UNIX printserver

- Pros
 - Mature technology
 - Proven reliability
 - Highly scalable
- Cons
 - More expensive
 - Training



Locating print servers

- Within multiple work groups
- Within single work groups
- At a location that serves many individual users
- Wherever print output is needed



Locating printers

- Where the network is available
- Anywhere where there is a need for localized printing
- At locations that require privacy



Choosing a printer

- Categorize your output type by work group requirements
- Choose a printer that can handle output type
- Size the printer according to volume



Print distribution software Requirements

- Should not require specialized hardware
- Handles cross-platform network environments
- Handles different network & print protocols
- Maximizes system resources
- Fault tolerant
- Secure
- Scalable
- Price



Printdistribution - Features

- Automates manual & repetitive tasks
- Improves time to deliver - speed
- Operates unattended & in the background
- Uses standard platform-specific print processes & procedures
- Controls print output
- Print files can't be lost
- Archives print files
- Simple to learn & maintain



Print distribution - Administration

Host	Type	Spool File	Job	User	Account	Device
SABER	MPE	CUSTMAST	CUSTMAST	MGR	NERDLERN	*
SABER	MPE	SREPMAS	SREPMAS	MGR	NERDLERN	*
Saber	MPE	*	*	JohnBrown	*	*
avenger	UNIX	ts.adm	*	*	*	*
avenger	UNIX	ts.readme	*	*	*	*
avenger	UNIX	nerdd1	*	*	*	*
NT50	NT	readme.txt	*	*	*	*
NT50	NT	document.doc	*	*	*	*
*	*	*	*	*	*	*

Name	Exec. Name	Exec. Type	Exec. Param.	Err. Exec. Name	Err. Exec. Type	Err. Exec.
saberp		TrmPrint	-p "hp1100 on nt23"		TrmPrint	
avengerp		TrmPrint	-p "hp1100 on nt23"		TrmPrint	
catchallprofile		TrmFile	-r c:\temp			

Simple to administer from any location



Print distribution - Administration

NT RECEIVE PATTERNS CONFIGURATION - [ADD]

Host Name:

Host Type: *

Spoolfile Name: *

Job/Session Name: *

User Name: *

Account Name: *

Destination Device: *

Attached Cancel OK

NT RECEIVE PROFILES CONFIGURATION - [ADD]

Profile Name:

Executable Name:

Executable Type: TrnPrint

Executable Parameters:

Error Executable Name:

Error Executable Type: TrnPrint

Error Executable Parameters:

Cancel OK

Simple to configure on all platforms



Print distribution - Administration

RECEIVE PATTERNS * | RECEIVE PROFILES | NT GLOBAL SWITCHES

Host	Type	Spool File	Job	User	Account	Device
SABER	MPE	CUSTMAST	CUSTMAST	MGR	NERDLERN	*
SABER	MPE	SREPMAST	SREPMAST	MGR	NERDLERN	*
Saber	MPE	*	*	JohnBrown	*	*
avenger	UNIX	ts.adm	*	*	*	*
avenger	UNIX	ts.readme	*	*	*	*
avenger	UNIX	nerdd1	*	*	*	*
NT50	NT	readme.txt	*	*	*	*
NT50	NT	document.doc	*	*	*	*
*	*	*	*	*	*	*

Attached receive profiles: (Read Only)

Name	Exec. Name	Exec. Type	Exec. Param.	Err. Exec. Name	Err. Exec. Type	Err. Exec.
saberp		TrnPrint	-p "hp1100 on nt23"		TrnPrint	

rec=00003 1/9 SORT 0-00:08:14

Easy to select groups of print files for handling



Print distribution - Administration

Host	Type	Spool File	Job	User	Account	Device
SABER	MPE	CUSTMAST	CUSTMAST	MGR	NERDLERN	*
SABER	MPE	SREPMAST	SREPMAST	MGR	NERDLERN	*
Saber	MPE	*	*	JohnBrown	*	*
avenger	UNIX	ts.adm	*	*	*	*
avenger	UNIX	ts.readme	*	*	*	*
avenger	UNIX	nerdd1	*	*	*	*
NT50	NT	readme.txt	*	*	*	*
NT50	NT	document.doc	*	*	*	*
*	*	*	*	*	*	*

Name	Exec. Name	Exec. Type	Exec. Param.	Err. Exec. Name	Err. Exec. Type	Err. Exec.
saberp		TrmPrint	-p "hp1100 on nt23"		TrmPrint	
avengerp		TrmPrint	-p "hp1100 on nt23"		TrmPrint	
catchallprofile		TrmFile	-r c:\temp			

Accommodates faults in network conditions



Print distribution - Administration

Host	Type	Spool File	Job	User	Account	Device
SABER	MPE	CUSTMAST	CUSTMAST	MGR	NERDLERN	*
SABER	MPE	SREPMAS	SREPMAS	MGR	NERDLERN	*
Saber	MPE	*	*	JohnBrown	*	*
avenger	UNIX	ts.adm	*	*	*	*
avenger	UNIX	ts.readme	*	*	*	*
avenger	UNIX	nerdd1	*	*	*	*
NT50	NT	readme.txt	*	*	*	*
NT50	NT	document.doc	*	*	*	*
*	*	*	*	*	*	*

Name	Exec. Name	Exec. Type	Exec. Param.	Err. Exec. Name	Err. Exec. Type	Err. Exec.
saberp		TrmPrint	-p "hp1100 on nt23"		TrmPrint	
avengerp		TrmPrint	-p "hp1100 on nt23"		TrmPrint	
catchallprofile		TrmFile	-r c:\temp			

Broadcasts print output



Print distribution - Administration

The screenshot displays the TrnLogViewer application window. The main window contains a table with the following data:

Error Number	Error Message	Date	Time	Program	Print ID	Profile	Spoolfile	Job Name
0.8000	The operation c...	990813	163854	TRNRECV	#075903	saberf	SOREPORT	SOREPOI
0.8000	The operation c...	990813	163953	TRNRECV	#075905	saberf	CUSTMAST	CUSTMA
0.8000	The operation c...	990813	164021	TRNRECV	#075907	saberf	SREPMAST	SREPMA
0.8000	The operation c...	990813	164412	TRNRECV	#075903	saberf	SOREPORT	SOREPOI
0.8000	The operation c...	990813	164510	TRNRECV	#075905	sabert	CUSTMAST	CUSTMA
0.8000	The operation c...	990813	164604	TRNRECV	#075907	sabert	SREPMAST	SREPMA
0.8000	The operation c...	990813	164844	TRNRECV	#075909			
0.8000	The operation c...	990813	164923	TRNRECV	#075911			
0.8000	The operation c...	990813	164952	TRNRECV	#075913			
0.8095	The operation c...	990813	170933	TRNRECV				
0.8096	The operation c...	990813	171008	TRNRECV				
0.8000	The operation c...	990813	171601	TRNRECV	tstest-2009			
0.8000	The operation c...	990813	171922	TRNRECV	tstest-2016			
0.8000	The operation c...	990813	172028	TRNRECV	tstest-2019			

An error message dialog box is overlaid on the table, displaying the following information:

TrnLogViewer

ERROR CODE: 0.8000

DESCRIPTION:

The operation completed successfully.@LOG_MSG_NO_ERROR

OK

Simple troubleshooting on all platforms



Keep it simple smart

- What is your current print strategy, does it serve you?
- Don't box yourself into existing strategies & operations
- Consider mixing platforms & printers
- Put the print output where the user needs it
- Consider what & who you are trying to optimize