

# Managing HP UX Over the Internet Remotely and Securely

Juggy Krishnamurthy  
VP Engineering & Operations, Arula  
Systems

10670 N. Tantau Ave., Suite 200

Cupertino, CA 95014

Phone: 408-996-3400

Fax: 408-996-3406

[juggy@arula.com](mailto:juggy@arula.com)

# What is HP-UX Management?

Administrators typically need to address 3 things when dealing with HP-UX

- Installation—Configuration management
- Upgrades—Workload management
- Reboot—Fault management

# How is HP UX Management Done Today?

- Console access using a dumb terminal
- Telnet access over the network

# Issues with Access via Dumb Terminal

- Requires access of the computer which typically housed in a secured and difficult to access area
- Needs local presence
- Cannot provide remote support effectively

## Issues with Access via Telnet

- Security concerns
- Cannot access system when either the network or systems is down
- Does not allow simultaneous access
- Does not support block mode operation

# Market Trends

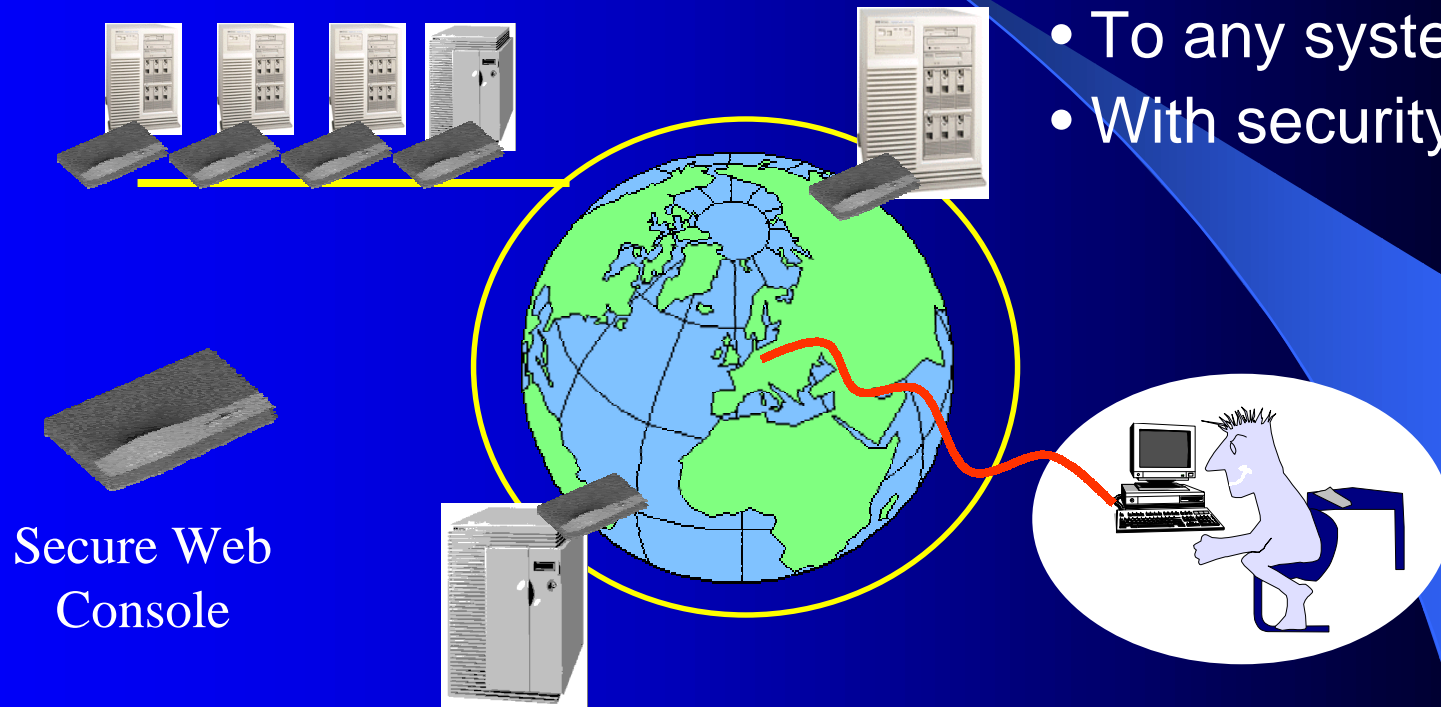
- Number of servers are rapidly increasing
- Geographical dispersion of equipment
- Inadequate resources to handle the increasing load
- Data centers are getting denser
- Headless and lights out operation
- Need to access experts that are not locally present
- Increasing uptime and tighter SLA requirements

# Addressing the Requirements

- Use internet as a communication media
- Use the browser to provide anytime anywhere access
- Provide adequate security so that data transmission is encrypted

# The Solution

- From anywhere
- With any browser
- To any system
- With security



**Instant access to system console**



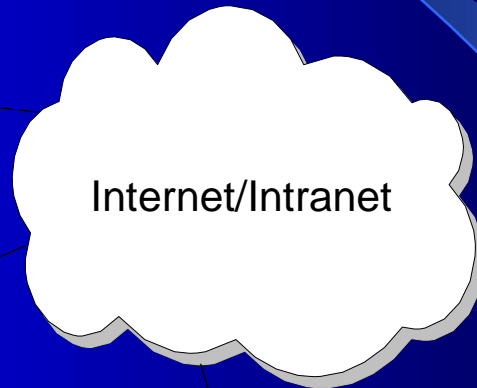
## HP Secure Web Console

- Provides direct browser based access to the server's console port
- Allows the remote operator to issue powerful, low-level HP-UX commands and functions
  - Rebooting from alternate media
  - Re-kerneling
  - Reconfiguring file systems
  - Secure access

## What is HP Secure Web Console?

- Internet appliance that connects directly to the server console port over RS-232
- Appliance has its own processor and flash memory that houses the java applet that enables the console view to be transported over the internet
- The device also provides the required security to protect the target device

# Deployment



LAN

Serial Link

End Host System



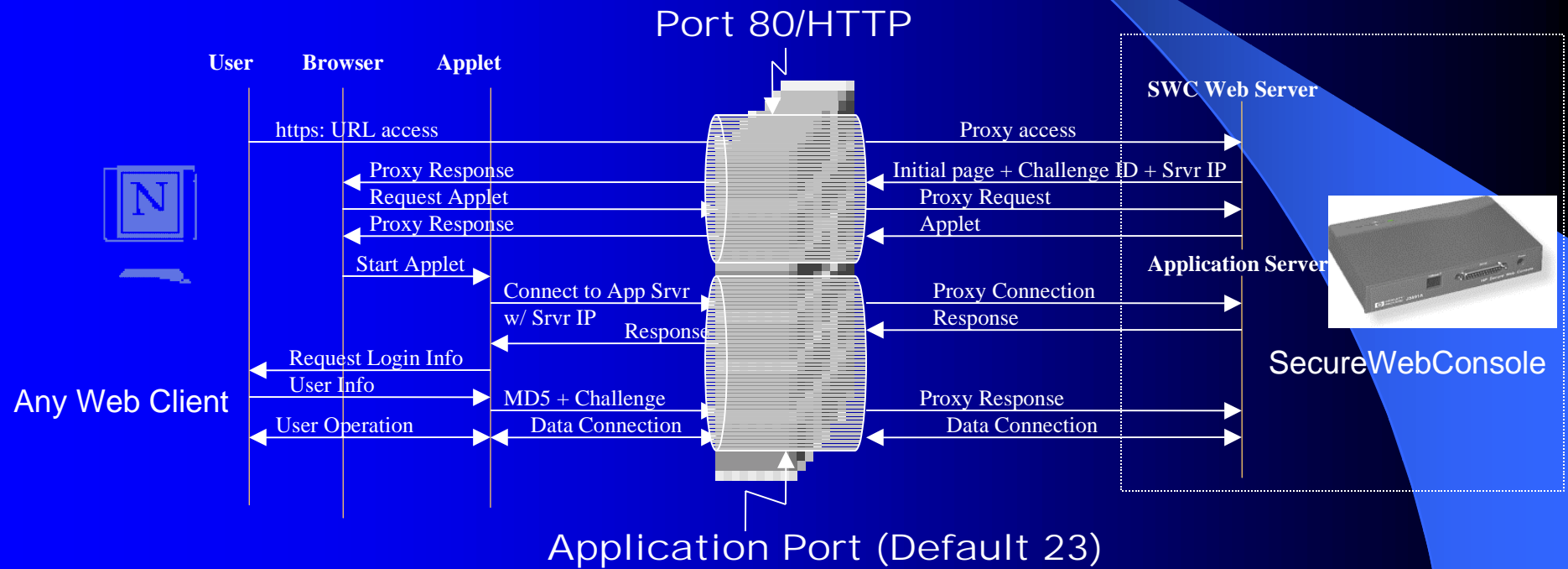
HP Secure web Console



# Features

- Powerful server management
- Mirrored access
- Easily scalable
- History
- Secure
- Browser based
- Easy upgrades
- Easy to install

# Theory of Operation



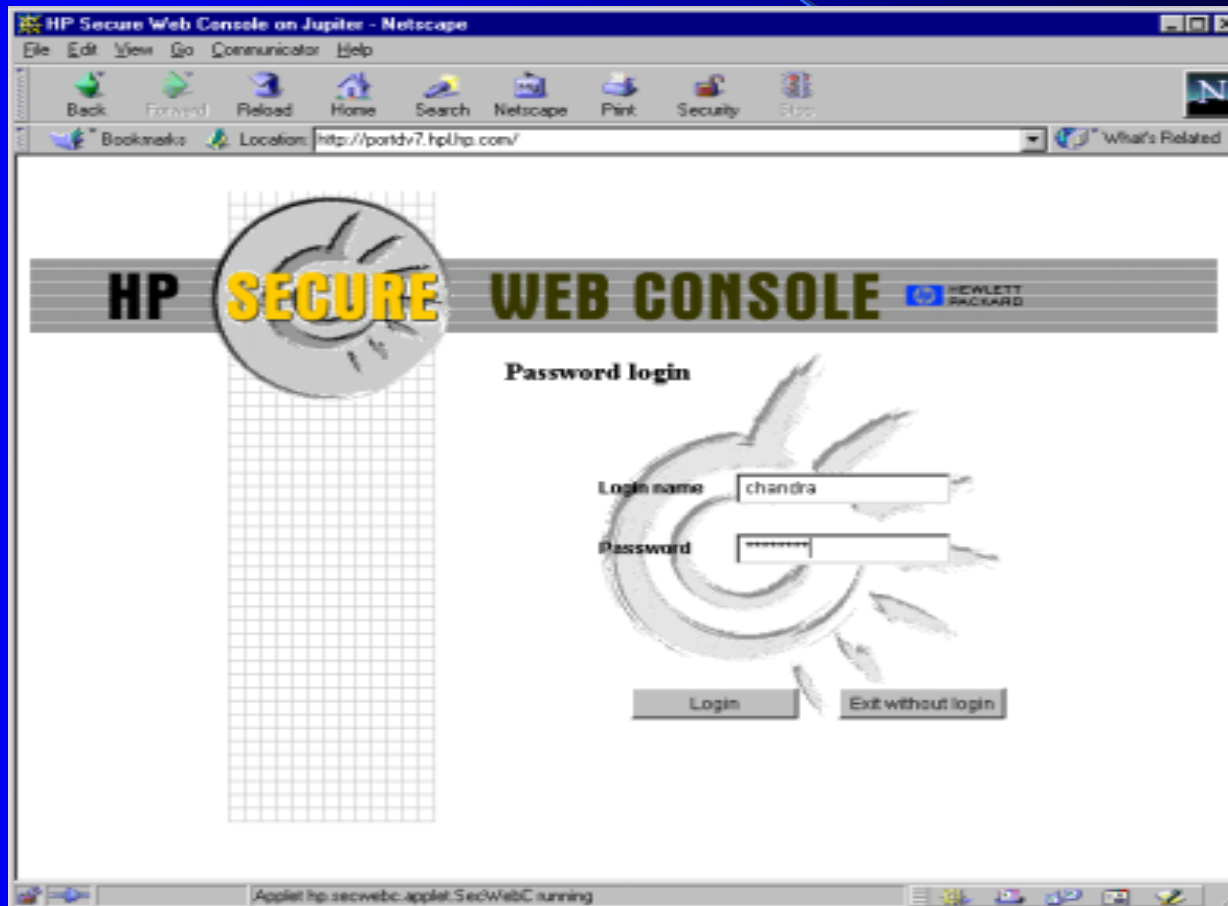
## Benefits

- Allows a single operator to access and manage multiple servers located in various locations
- Provides a uniform way to manage heterogeneous equipment
- Multiple simultaneous access
- Remote access with security
- Scalable

# Extensions

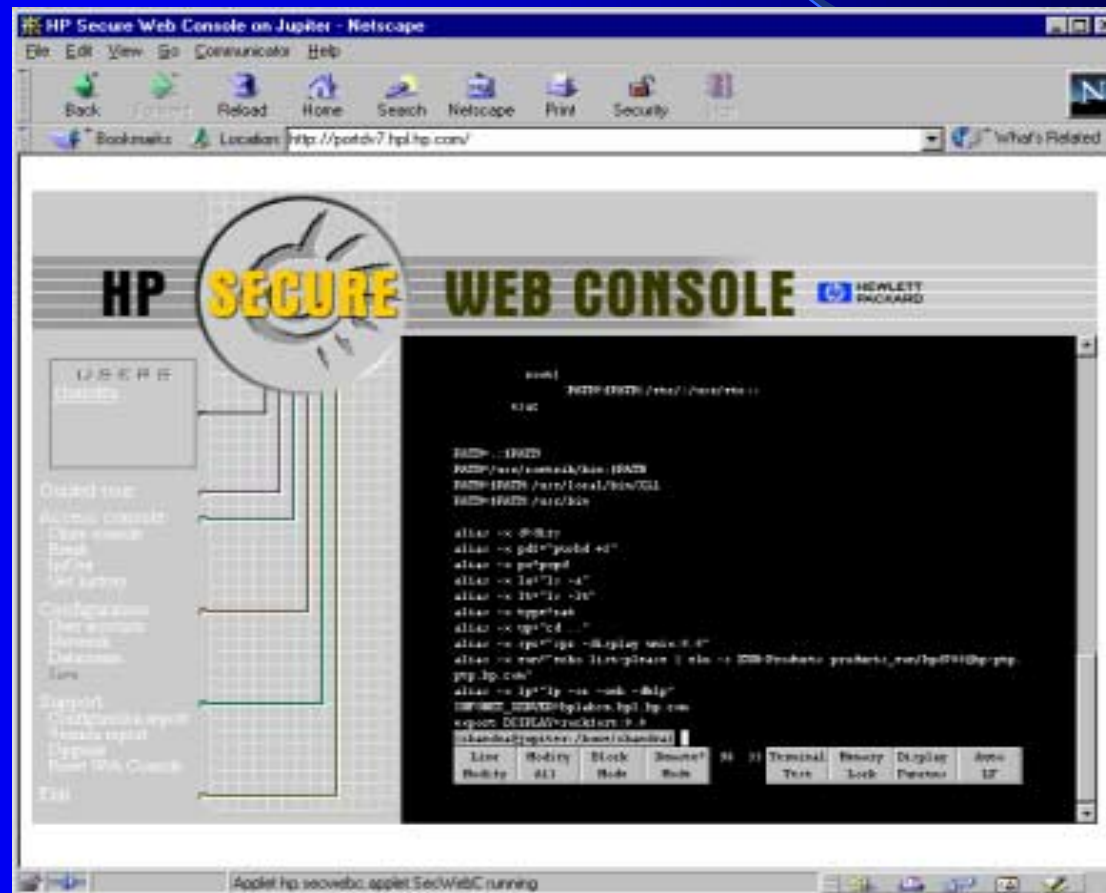
- Increased security support
  - Radius
  - SSL
- Notification services (SMTP)
- Scripting
- SNMP support
- Ability to create agents to effectively manage server functions
- Aggregation manager to handle large number of devices
- Objective—Provides an easy to use highly customizable management platform

# Initial Login





# Open up the Emulated "Console"



## Benefits to Internet-based Remote Access

- Unlike other solutions, no software installations is required on either server or client
- Using the Internet as communications conduit means that the target device can now be accessed from anywhere around the world
- Many HP UX servers can be managed by a smaller set of people
- Can easily provide 24 x 7 support across the globe
- Can tap into experts that maybe located geographically

## Conclusions

- Remote console access via the Internet to HP UX servers is an important component of network management
- Internet management appliances provides IT staff with a new cost effective way to manage their networks and extend the ROI on other network management solutions
- Solution like this one is easy to deploy and sets up a framework for larger capabilities – like deploying applications via the management appliance a future reality

The image features a solid blue background with a subtle gradient. A thin, light blue curved line starts from the top left and arcs towards the right side. On the right side, there is a vertical strip of a lighter blue color. The word "Questions" is centered in the middle of the image in a white, sans-serif font.

Questions